



IAU Minor Planet Center

MPC Operations Status

Processing ([Info](#))

ECS: Accessible

[MPC Status Page](#)

Observer Services (NEOs)

[NEO Services Overview](#)

[NEO Confirmation](#)

[NEO Confirmation \(RA order\)](#)

[NEO Ratings](#)

[NEO Page](#)

[NEO Observation Planning Aid](#)

[NEOChecker](#)

[NEOCMTChecker](#)

Observer Services

[Services Overview](#)

[IAUMail](#)

[Minor Planet & Comet Ephem.](#)

[Natural Satellite Ephemerides](#)

[New Object Ephemerides](#)

[MPCChecker](#)

[CMTChecker](#)

[Distant Artificial Satellites](#)

[Observing List Customizer](#)

[Sky Coverage](#)

Orbital Elements

[Orbital Elements Overview](#)

[MPCORB](#)

[Orbital Elements for Programs](#)

[MPCAT](#)

[MPCUPDATE](#)

Astrometric Observations

[MPCAT-OBS](#)

[MPCOBS](#)

Publications

[Publications Overview](#)

[MPECs](#)

[MPC Archive](#)

[MPC RSS Feeds](#)

[CBAT RSS Feeds](#)

Documentation

[Documentation Overview](#)

[Minor Body Astrometry](#)

[What's New](#)

Lists and Plots

[Lists and Plots Overview](#)

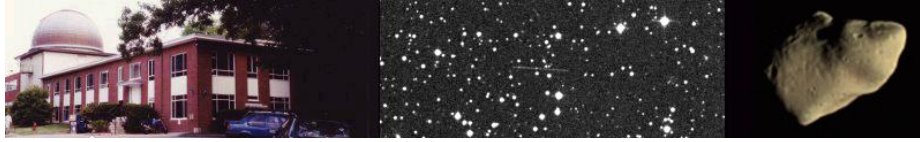
[Minor Planets](#)

[Comets](#)

[Animations](#)

General Information

[Astronomical Headlines](#)



MPEC 2011-B49 : 2011 BY18

The following [Minor Planet Electronic Circular](#) may be linked-to from your own Web pages, but must **not** otherwise be [redistributed electronically](#).

A form allowing access to any MPEC is at [the bottom of this page](#).



[Read MPEC 2011-B48](#)



[Read MPEC 2011-B50](#)

M.P.E.C. 2011-B49

Issued 2011 Jan. 28, 11:15 UT

The Minor Planet Electronic Circulars contain information on unusual minor planets and routine data on comets. They are published on behalf of Commission 20 of the International Astronomical Union by the Minor Planet Center, Smithsonian Astrophysical Observatory, Cambridge, MA 02138, U.S.A.

Prepared using the [Tamkin Foundation Computer Network](#)

MPC@CFA.HARVARD.EDU

URL <http://www.minorplanetcenter.org/iau/mpc.html>

ISSN 1523-6714

2011 BY18

Observations:

K11B18Y*	C2011	01	27.16170	03	06	43.81	+10	43	43.8	19.8	VrEB049703
K11B18Y	C2011	01	27.16744	03	06	49.82	+10	44	18.2	19.2	VrEB049703
K11B18Y	C2011	01	27.17310	03	06	55.65	+10	44	52.6	19.1	VrEB049703
K11B18Y	C2011	01	27.17877	03	07	01.63	+10	45	26.8	20.1	VrEB049703
K11B18Y	C2011	01	27.18478	03	07	07.89	+10	46	04.4	19.4	VrEB049703
K11B18Y	C2011	01	27.18536	03	07	08.58	+10	46	08.1	19.1	VrEB049703
K11B18Y	C2011	01	27.18593	03	07	09.08	+10	46	11.2	18.6	VrEB049703
K11B18Y	C2011	01	27.18651	03	07	09.73	+10	46	16.2	19.2	VrEB049703
K11B18Y	C2011	01	27.22730	03	07	52.29	+10	50	23.4	19.5	RcEB049854
K11B18Y	C2011	01	27.23231	03	07	57.81	+10	50	54.3	19.7	RcEB049854
K11B18Y	C2011	01	27.23346	03	07	58.72	+10	51	01.0	19.4	VrEB049703
K11B18Y	C2011	01	27.23417	03	07	59.55	+10	51	05.4		rEB049703
K11B18Y	C2011	01	27.23486	03	08	00.27	+10	51	09.8		rEB049703
K11B18Y	C2011	01	27.23556	03	08	01.12	+10	51	14.8		rEB049703
K11B18Y	C2011	01	27.23729	03	08	02.77	+10	51	25.2	19.5	RcEB049854
K11B18Y	KC2011	01	28.04295	03	21	50.47	+12	10	31.2	19.6	RuEB049I19
K11B18Y	KC2011	01	28.04852	03	21	56.03	+12	11	02.5	19.1	RuEB049I19
K11B18Y	KC2011	01	28.05509	03	22	02.35	+12	11	38.5	18.7	RuEB049I19
K11B18Y	KC2011	01	28.06066	03	22	07.86	+12	12	09.9	18.5	RuEB049I19
K11B18Y	JC2011	01	28.09280	03	22	41.30	+12	14	22.9	19.3	VoEB049695
K11B18Y	JC2011	01	28.09354	03	22	42.06	+12	14	27.2	19.7	VoEB049695
K11B18Y	JC2011	01	28.09417	03	22	42.65	+12	14	30.5	19.6	VoEB049695
K11B18Y	KC2011	01	28.13922	03	23	26.16	+12	18	32.9	19.7	RuEB049H36
K11B18Y	KC2011	01	28.14362	03	23	30.45	+12	18	56.6	19.6	RuEB049H36
K11B18Y	KC2011	01	28.14819	03	23	34.90	+12	19	21.5	19.9	RuEB049H36
K11B18Y	KC2011	01	28.15284	03	23	39.47	+12	19	47.1	19.7	RuEB049H36
K11B18Y	C2011	01	28.22146	03	24	46.63	+12	26	03.0	18.8	RoEB049H01
K11B18Y	C2011	01	28.22848	03	24	53.46	+12	26	40.9	18.8	RoEB049H01
K11B18Y	C2011	01	28.23567	03	25	00.48	+12	27	19.6	18.8	RoEB049H01
K11B18Y	C2011	01	28.24373	03	25	08.34	+12	28	03.0	18.6	RoEB049H01

Observer details:

[695 Kitt Peak.](#) Observers M. Trueblood, L. Lebofsky, R. Crawford. [Measurer R. Crawford.](#) 2.1-m f/7.7 Ritchey-Chretien + CCD.

[703 Catalina Sky Survey.](#) Observer R. E. Hill. Measurers J. D. Ahern, R. E. Beshore, A. Boattini, G. J. Garradd, A. R. Gibbs, A. D. Grauer, R. E. Hill, R. A. Kowalski, S. M. Larson, R. H. McNaught. 0.68-m Schmidt + CCD.

[854 Sabino Canyon Observatory, Tucson.](#) Observer J. E. McGaha. 0.36-m f/10.0

General

- Contact Us
- Index
- Site Map
- Search Site
- Tech Info
- Documentation
- Links**
- Minor Planet Center
- Central Bureau for Astro. Tel.
- Cometary Science Lab/Archive
- International Comet Quarterly*
- Smithsonian Astro. Obs.

Schmidt-Cassegrain + CCD.
[H01 Magdalena Ridge Observatory, Socorro.](#) Observer W. H. Ryan. 2.4-m f/8.9 reflector + CCD.
[H36 Sandlot Observatory, Scranton.](#) Observer G. Hug. 0.56-m reflector + CCD.
[I19 Observatorio El Gato Gris, Tanti.](#) Observer C. Colazo. 0.35-m f/11 Schmidt-Cassegrain + CCD + f/3.3 focal reducer.

Orbital elements:

2011 BY18 PHA, Earth MOID = 0.0240 AU
 Epoch 2011 Feb. 8.0 TT = JDT 2455600.5 MPC
 M 16.46963 (2000.0) P Q
 n 0.27761940 Peri. 239.49258 +0.96540507 -0.25682302
 a 2.3272132 Node 135.34544 +0.25579272 +0.89916505
 e 0.7900111 Incl. 3.68002 +0.05062730 +0.35432209
 P 3.55 H 20.6 G 0.15 U 9

Residuals in seconds of arc

110127 703	0.4+	1.1+	110127 703	0.9-	0.5-	110128 695	0.2-	0.1-
110127 703	0.5+	0.2+	110127 703	0.4+	0.4-	110128 695	0.6-	0.2-
110127 703	0.7-	0.1-	110127 703	0.4+	0.2-	110128 H36	0.6+	0.3+
110127 703	0.1+	0.7-	110127 703	(2.1+ 0.5+)		110128 H36	0.4+	0.1-
110127 703	0.2-	0.0	110127 854	0.2-	0.3+	110128 H36	0.1+	0.1-
110127 703	1.0+	0.2+	110128 I19	0.2+	0.4-	110128 H36	0.5+	0.2+
110127 703	0.4-	0.2-	110128 I19	1.5+	0.1+	110128 H01	0.3-	0.1-
110127 703	0.2+	1.2+	110128 I19	0.6-	0.1-	110128 H01	0.4-	0.0
110127 854	0.8-	0.7-	110128 I19	0.0	0.6+	110128 H01	0.2-	0.0
110127 854	(3.4+	0.3-)	110128 695	0.7-	0.3-	110128 H01	0.1-	0.1+

Ephemeris:

2011 BY18 a,e,i = 2.33, 0.79, 4 q = 0.4887

Date	TT	R. A. (2000)	Decl.	Delta	r	Elong.	Phase	V
2010 12 29		20 43 57.7	-22 30 36	0.4741	0.6245	30.7	126.5	23.3
...								
2011 01 13		22 42 26.8	-16 09 49	0.2334	0.8323	44.2	124.5	22.2
...								
2011 01 21		01 02 23.5	-02 35 31	0.1724	0.9484	73.1	96.9	20.1
...								
2011 01 27		03 03 51.8	+10 27 09	0.1904	1.0346	99.9	69.6	19.5
2011 01 28		03 21 08.0	+12 05 59	0.1985	1.0488	103.4	65.9	19.5
2011 01 29		03 37 12.2	+13 33 16	0.2077	1.0630	106.6	62.6	19.5
...								
2011 02 04		04 50 25.4	+19 03 18	0.2796	1.1471	118.8	48.8	20.0
...								
2011 02 12		05 46 33.0	+21 49 08	0.4005	1.2562	124.1	40.6	20.7
...								
2011 02 27		06 41 13.0	+23 03 19	0.6619	1.4510	121.6	35.5	22.0

Carl W. Hergenrother

(C) Copyright 2011 MPC

M.P.E.C. 2011-B49



[Read MPEC 2011-B48](#)



[Read MPEC 2011-B50](#)

Display MPEC number: Clear

Enter an [MPEC](#) number in one of the following forms:

- 1997-B01 (the full form)
- J97B01 (the packed version of the full form)
- B01 (the abbreviated form)

YAHOO!
BABEL FISH

Choose a language to translate this page!

Select to language

Google Translate

Select Language

Gadgets powered by Google

