

IAU Minor Planet Center

MPC Operations Status

Processing [\(Info\)](#)
 ECS: Accessible

Observer Services (NEOs)

- NEO Services Overview
- NEO Confirmation
- NEO Confirmation (RA order)
- NEO Ratings
- NEO Page
- NEO Observation Planning Aid
- NEOChecker
- NEOCMTChecker

Observer Services

- Services Overview
- IAUMail
- Minor Planet & Comet Ephem.
- Natural Satellite Ephemerides
- New Object Ephemerides
- MPCChecker
- CMTChecker
- Distant Artificial Satellites
- Observing List Customizer
- Sky Coverage

Orbital Elements

- Orbital Elements Overview
- MPCORB
- Orbital Elements for Programs
- MPCAT
- MPCUPDATE

Astrometric Observations

- MPCAT-OBS
- MPCOBS

Publications

- Publications Overview
- MPECs
- MPC Archive
- MPC RSS Feeds
- CBAT RSS Feeds

Documentation

- Documentation Overview
- Minor Body Astrometry
- MPC Status Page
- What's New

Lists and Plots

- Lists and Plots Overview
- Minor Planets
- Comets

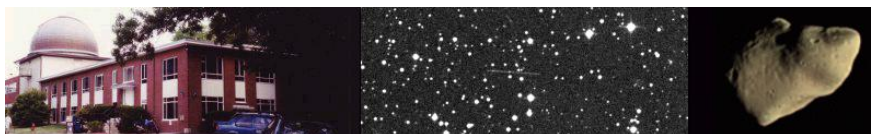
- Animations

General Information

- Astronomical Headlines
- Press Information Sheets

General

- Contact Us



MPEC 2010-S10 : DAILY ORBIT UPDATE (2010 SEPT. 17 UT)

The following [Minor Planet Electronic Circular](#) may be linked-to from your own Web pages, but must **not** otherwise be [redistributed electronically](#).
 A form allowing access to any MPEC is at [the bottom of this page](#).



[Read MPEC 2010-S09](#)



[Read MPEC 2010-S11](#)

M.P.E.C. 2010-S10

Issued 2010 Sept.17, 06:10 UT

The Minor Planet Electronic Circulars contain information on unusual minor planets and routine data on comets. They are published on behalf of Commission 20 of the International Astronomical Union by the Minor Planet Center, Smithsonian Astrophysical Observatory, Cambridge, MA 02138, U.S.A.

Prepared using the [Tamkin Foundation Computer Network](#)

MPC@CFA.HARVARD.EDU

URL <http://www.minorplanetcenter.org/iau/mpc.html> ISSN 1523-6714

DAILY ORBIT UPDATE (2010 SEPT. 17 UT)

Update to [MPEC 2010-S01](#)

Full-precision elements for the objects listed here are available at <http://www.minorplanetcenter.org/iau/MPCORB.html>

Erroneous identification:

K09C33K K05O36D E2010-S01

New identification:

J99RK6E	K10Q04Y	MPCW	
K00R75G	K10R14E	MPCW	
K02RG0H	K10RC2X	MPCS	
K06Q34B	K08AB2P	MPCW	
K06SU1S	K10K82Y	MPCW	
K07X10X	K10R26D	MPCW	
K08E90H	K10H89A	MPCW	
K09D76G	K10LA4X	MPCS	
K09D82J	K02U53W	K04A18J	MPCS
K09D88R	K07Y33L	MPCS	
K09D88Y	K02F32Z	K10R21F	MPCS
K09D92Y	K07U39N	MPCS	
K09D98Z	K10JD9Z	MPCS	
K09DB4U	K10G04B	MPCS	
K09F27C	K06SY2S	MPCS	
K09K17H	K10J62D	MPCS	
K09Q14Z	J98SH2C	MPCS	
K10H42Y	J94P07A	MPCW	
K10O43V	K04E46A	MPCS	
K10R39X	K06T61S	MPCW	
K10R67E	K07X37U	MPCW	

New double designation:

K09R25S K09W36A MPCW

New multiple-opposition orbits:

Object	H	G	Epoch	M	Peri.	Node	Incl.	e	a	Opp	C
J93T30M	16.9	0.15	K107N	317.449	270.684	143.140	4.363	0.21531	2.63027	6	X
J94R18R	15.1	0.15	K107N	47.767	302.968	339.476	15.191	0.21684	3.01994	6	X
J94R25A	15.7	0.15	K107N	12.719	50.463	278.142	8.222	0.14725	3.06050	5	X
J95S08T	17.3	0.15	K107N	83.555	269.262	355.361	6.068	0.08710	2.39268	5	X
J95V08R	17.3	0.15	K107N	166.226	324.144	230.652	5.863	0.11430	2.45351	7	X
J95W12X	15.2	0.15	K107N	340.587	255.989	130.530	4.618	0.22071	3.94825	4	X
J96E08H	15.9	0.15	K107N	207.132	180.622	352.642	7.742	0.04205	3.11414	5	X
J96X08L	17.5	0.15	K107N	302.873	130.977	280.084	8.136	0.12418	2.33312	3	X

Index
Site Map
Search Site
Tech Info
Documentation
Links
Minor Planet Center
Central Bureau for Astro. Tel.
<i>International Comet Quarterly</i>
Smithsonian Astro. Obs.

J97C00L	15.8	0.15	K107N	11.099	25.452	307.653	9.284	0.10262	3.00772	8	X
J97G03L	19.2	0.15	K107N	329.946	260.919	195.864	6.680	0.78062	2.27841	2	X
J97G28H	17.8	0.15	K107N	287.980	105.095	354.532	7.014	0.37125	2.00455	6	X
J98D01D	15.7	0.15	K107N	275.687	151.621	312.069	1.823	0.14007	2.78054	8	X
J98M01W	16.8	0.15	K107N	206.600	233.386	238.147	6.240	0.04137	2.42468	6	X
J98Q28R	17.4	0.15	K107N	10.037	96.962	251.514	4.067	0.20110	2.47611	5	X
J98T20S	17.8	0.15	K107N	317.541	16.852	31.740	6.030	0.18967	2.53636	4	X
J98X49R	15.9	0.15	K107N	305.382	132.352	308.276	11.229	0.26443	2.56321	4	X
J99R93V	16.6	0.15	K107N	2.535	342.444	8.466	12.613	0.20406	2.35951	6	X
J99RH0S	17.1	0.15	K107N	351.253	174.418	161.705	3.445	0.25625	2.38202	2	X
J99RK6E	15.2	0.15	K107N	349.419	10.763	339.492	17.216	0.21955	3.15028	2	W
J99RK7B	14.7	0.15	K107N	355.732	22.523	331.665	17.453	0.16258	3.13592	6	X
J99RK7D	15.6	0.15	K107N	358.751	38.917	329.145	14.987	0.24542	3.09397	4	X
J99RN9N	17.4	0.15	K107N	13.743	356.809	314.271	10.543	0.39575	2.36876	2	X
J99S00C	17.6	0.15	K107N	352.917	330.201	359.455	5.071	0.29812	2.39412	2	X
J99S19J	17.2	0.15	K107N	36.078	293.030	9.086	19.332	0.06314	1.96100	3	X
J99S23L	17.0	0.15	K107N	274.607	110.208	349.533	6.036	0.05956	2.33568	6	X
J99T02U	16.6	0.15	K107N	334.025	357.189	26.050	6.505	0.17510	2.39432	6	X
J99T05B	18.9	0.15	K107N	302.232	238.656	195.692	30.439	0.39316	1.96788	4	X
J99T21P	15.1	0.15	K107N	332.543	339.112	48.206	14.581	0.24294	3.18675	5	X
J99T30A	15.3	0.15	K107N	24.932	335.824	4.456	10.406	0.12365	3.07685	5	X
J99T34Y	15.6	0.15	K107N	7.766	143.595	210.269	27.556	0.24227	3.11421	4	X
J99T37O	16.3	0.15	K107N	22.210	99.646	208.432	11.449	0.17935	2.36657	4	X
J99T41G	15.9	0.15	K107N	289.387	234.289	214.726	13.176	0.26458	3.20336	4	X
J99T47F	16.3	0.15	K107N	42.359	115.122	184.007	10.083	0.09668	3.13911	6	X
J99T58W	15.3	0.15	K107N	181.236	345.124	216.835	14.666	0.17373	3.17015	5	X
J99T62S	16.3	0.15	K107N	292.111	58.672	33.661	10.163	0.20296	3.17461	4	X
J99T71T	16.6	0.15	K107N	45.491	275.596	28.851	6.910	0.09449	3.16187	4	X
J99TB6P	15.4	0.15	K107N	11.304	346.288	12.241	12.079	0.20274	3.07143	6	X
J99TH9K	17.0	0.15	K107N	325.882	126.058	237.923	5.108	0.13139	2.42391	6	X
J99TL3D	16.7	0.15	K107N	301.642	186.249	246.297	2.901	0.17825	2.37443	6	X
J99TQ2E	15.9	0.15	K107N	272.413	221.928	226.571	8.224	0.05090	3.17422	5	X
J99TR8N	15.3	0.15	K107N	343.414	344.691	32.443	10.609	0.13062	3.19034	5	X
J99TT4J	15.6	0.15	K107N	176.329	9.769	177.513	11.663	0.04878	3.06201	7	X
J99U29M	16.4	0.15	K107N	318.018	348.852	61.746	4.135	0.13987	3.13447	4	X
J99U40O	17.1	0.15	K107N	316.953	95.723	319.392	3.014	0.10382	2.37226	6	X
J99V13L	16.1	0.15	K107N	299.365	154.750	242.246	18.989	0.08012	1.98086	6	X
J99V16K	16.6	0.15	K107N	39.486	81.769	227.292	8.471	0.07314	3.17065	4	X
J99V18B	17.5	0.15	K107N	353.800	331.889	22.108	6.923	0.14875	2.39259	4	X
J99V46H	16.1	0.15	K107N	334.619	127.201	236.753	10.880	0.25531	2.40996	5	X
J99V75M	16.0	0.15	K107N	343.860	152.016	215.029	15.399	0.08992	3.19063	4	X
J99VC9E	17.2	0.15	K107N	352.861	93.832	254.341	3.801	0.24876	2.38925	5	X
J99VF7Y	16.8	0.15	K107N	350.013	68.084	279.513	1.012	0.22587	2.40956	5	X
J99VG3R	17.1	0.15	K107N	319.190	12.266	31.761	3.071	0.19741	2.39664	5	X
J99VL9B	15.5	0.15	K107N	341.564	115.298	308.202	5.876	0.22720	3.08645	5	X
J99W23R	16.3	0.15	K107N	195.437	314.104	233.503	4.361	0.08689	3.17179	6	X
J99X44X	17.2	0.15	K107N	317.545	355.492	54.546	3.560	0.21462	2.40023	6	X
J99XB7H	14.8	0.15	K107N	1.583	117.771	262.070	12.350	0.23256	3.11187	5	X
J99Y10D	18.0	0.15	K107N	307.096	289.868	127.089	2.843	0.16312	2.41495	5	X
K00B13W	15.4	0.15	K107N	144.262	239.103	318.399	12.406	0.11911	2.57299	4	X
K00J08J	16.4	0.15	K107N	153.810	350.975	204.241	14.086	0.10625	2.64409	5	X
K00Q47C	16.5	0.15	K107N	17.116	352.042	337.747	7.452	0.26799	2.20724	5	X
K00Q68U	16.8	0.15	K107N	321.472	150.814	215.234	6.735	0.14776	2.25355	4	X
K00QC4D	16.8	0.15	K107N	16.118	3.341	320.419	3.160	0.25396	2.21470	3	X
K00QC9Y	15.9	0.15	K107N	348.906	148.331	155.780	17.432	0.43314	2.94153	3	W
K00QJ4O	16.1	0.15	K107N	317.450	289.313	135.661	10.316	0.49451	2.94053	4	X
K00QP4S	16.4	0.15	K107N	333.373	287.855	82.714	7.411	0.20455	2.23633	5	X
K00R75G	18.1	0.15	K107N	356.293	341.040	354.245	9.697	0.28089	2.22755	2	W
K00R86M	15.1	0.15	K107N	289.037	194.915	214.847	10.154	0.12920	2.99079	7	X
K00S25Y	16.5	0.15	K107N	301.746	187.071	226.420	6.225	0.27029	2.22683	5	X
K00S35O	17.4	0.15	K107N	24.205	132.186	171.179	5.632	0.22591	2.22377	6	X
K00S45C	17.3	0.15	K107N	30.294	76.918	208.740	25.349	0.17106	1.84157	4	X
K00S51E	16.6	0.15	K107N	310.461	77.526	336.458	5.076	0.15834	2.22208	5	X
K00SA0J	17.3	0.15	K107N	333.211	77.611	288.726	6.814	0.26787	2.24907	2	X
K00SG6G	15.9	0.15	K107N	14.793	357.865	346.705	14.286	0.20686	2.89981	5	X
K00SN3R	16.7	0.15	K107N	25.140	161.348	145.152	8.854	0.21030	2.22334	6	X
K00SS2K	16.7	0.15	K107N	332.810	109.748	247.957	5.837	0.14061	2.24807	4	X
K00SS5U	15.6	0.15	K107N	269.957	167.579	253.475	9.671	0.09813	3.00766	5	X
K00SU7O	16.9	0.15	K107N	345.446	88.363	293.997	5.162	0.16611	2.21805	4	X
K00SY5U	17.9	0.15	K107N	45.389	283.530	356.173	7.352	0.25741	2.22108	5	X
K00T49D	15.5	0.15	K107N	336.561	313.577	60.149	10.274	0.15695	2.96548	6	X
K00U13B	17.2	0.15	K107N	318.596	100.945	294.228	5.237	0.20833	2.25158	3	X
K00U29Q	16.0	0.15	K107N	269.938	247.702	223.983	22.717	0.27125	2.27103	4	X
K00U33V	16.8	0.15	K107N	145.071	313.376	226.059	20.906	0.02129	1.88152	4	X
K00U71W	16.6	0.15	K107N	313.927	174.960	248.272	4.577	0.11629	2.23306	6	X
K00U97F	15.0	0.15	K107N	332.056	129.658	253.810	9.177	0.13439	3.00378	5	X
K00V62F	15.3	0.15	K107N	271.626	105.615	344.876	25.807	0.32408	2.30031	4	X
K00W40Z	15.1	0.15	K107N	303.378	199.590	244.370	17.869	0.24701	3.02972	3	X
K00W44D	15.5	0.15	K107N	3.302	124.870	219.347	8.735	0.04769	3.03247	5	X
K00W68V	15.1	0.15	K107N	351.164	102.912	288.231	9.425	0.15131	2.90507	5	X
K00W86D	15.4	0.15	K107N	330.810	135.263	264.559	15.709	0.15947	3.01764	4	X
K00WF0U	16.7	0.15	K107N	299.254	114.678	284.260	19.705	0.11227	1.88121	4	X
K00WF5U	15.3	0.15	K107N	252.157	161.108	289.366	9.801	0.16903	3.11767	3	X
K00WJ3N	17.8	0.15	K107N	97.782	281.485	325.279	4.598	0.11528	2.23896	7	X
K00X53A	14.5	0.15	K107N	264.517	160.258	292.123	27.051	0.11290	3.12776	5	X
K00X53C	14.6	0.15	K107N	251.821	144.568	310.547	17.397	0.20172	3.17934	4	X

K00Y27Q	16.1	0.15	K107N	305.656	140.562	301.264	9.918	0.34171	3.05119	3 X
K00Y51N	16.3	0.15	K107N	303.523	343.928	99.731	2.250	0.30664	3.04157	3 X
K00YB5A	14.8	0.15	K107N	262.467	169.006	289.667	27.122	0.14986	3.19950	3 X
K01A33R	16.4	0.15	K107N	261.178	43.438	61.565	4.636	0.11107	2.31333	6 X
K01B02X	15.9	0.15	K107N	344.788	336.560	29.883	10.740	0.40446	2.28127	5 X
K01B11C	16.7	0.15	K107N	216.734	237.556	235.517	7.785	0.13725	2.38619	5 X
K01C38A	17.1	0.15	K107N	135.191	196.032	14.943	20.152	0.02521	1.92876	4 X
K01D34R	15.1	0.15	K107N	305.542	290.171	140.001	21.183	0.26847	3.09171	4 X
K01D76B	16.1	0.15	K107N	235.546	190.263	334.393	3.999	0.21637	3.13279	6 X
K01FF2A	16.7	0.15	K107N	167.634	201.807	1.830	9.487	0.13913	2.41491	5 X
K01H43T	16.3	0.15	K107N	135.094	180.072	34.762	6.633	0.09546	2.47021	6 X
K01H51B	16.4	0.15	K107N	151.855	289.567	265.080	4.326	0.13133	2.45925	7 X
K01K54R	16.5	0.15	K107N	157.653	79.603	119.287	2.824	0.15056	2.45794	6 X
K01O84F	16.5	0.15	K107N	20.397	348.340	329.389	25.311	0.51540	2.68486	4 W
K01OA4R	15.2	0.15	K107N	10.807	349.762	357.876	27.623	0.22724	2.71420	4 X
K01OB1S	16.2	0.15	K107N	21.204	9.300	318.455	13.950	0.17871	2.63977	3 X
K01P13B	15.4	0.15	K107N	348.453	86.430	278.658	13.599	0.16487	2.63372	4 X
K01P16T	15.5	0.15	K107N	301.895	141.907	257.982	13.312	0.11321	2.71012	4 X
K01P28Y	15.7	0.15	K107N	349.739	51.106	316.228	12.269	0.28447	2.68393	3 X
K01P49R	17.8	0.15	K107N	300.195	172.733	224.213	13.771	0.14539	1.71276	5 X
K01P66Y	16.3	0.15	K107N	22.730	55.739	247.516	12.118	0.15033	2.73217	2 X
K01Q00K	15.4	0.15	K107N	12.682	353.635	340.955	12.896	0.28268	2.67223	3 X
K01Q17C	16.2	0.15	K107N	352.077	244.107	133.986	9.625	0.38310	2.68150	4 X
K01Q60Z	15.8	0.15	K107N	21.045	331.771	358.782	8.702	0.39175	2.65373	4 X
K01Q89Q	15.6	0.15	K107N	311.595	353.583	51.686	12.359	0.17268	2.68706	4 X
K01QA3E	16.5	0.15	K107N	1.175	211.326	135.914	7.283	0.21962	2.65797	2 X
K01QB0P	17.1	0.15	K107N	23.656	100.130	223.607	10.548	0.30335	2.68825	2 X
K01QB3A	15.9	0.15	K107N	301.438	136.007	263.179	7.045	0.19941	2.77280	3 X
K01QB3T	16.1	0.15	K107N	6.564	32.223	316.468	11.332	0.13976	2.69257	3 X
K01QD5F	15.7	0.15	K107N	320.459	79.424	320.285	11.970	0.18138	2.75306	4 X
K01QH1O	16.2	0.15	K107N	359.838	146.042	207.083	9.177	0.18172	2.65777	6 X
K01QI7U	15.5	0.15	K107N	353.700	77.830	276.826	12.863	0.22819	2.71390	3 X
K01QJ0J	15.5	0.15	K107N	357.155	128.554	255.208	12.574	0.21686	2.64987	3 X
K01QJ5R	15.4	0.15	K107N	326.018	142.459	249.521	14.726	0.21755	2.72693	4 X
K01QK1F	16.0	0.15	K107N	24.537	21.921	323.415	9.301	0.10213	2.65294	6 X
K01QL3S	15.7	0.15	K107N	32.063	348.430	332.908	11.576	0.20106	2.65963	4 X
K01QL8U	17.0	0.15	K107N	17.506	341.761	334.279	4.623	0.29268	2.69197	2 X
K01QM7G	15.9	0.15	K107N	37.156	342.786	291.190	9.045	0.15649	2.75407	5 X
K01QS6V	15.7	0.15	K107N	320.263	166.205	223.734	13.633	0.19566	2.71623	4 X
K01R09W	15.7	0.15	K107N	356.099	113.894	226.056	24.076	0.19100	2.71246	5 X
K01R11B	16.4	0.15	K107N	25.636	331.974	358.038	4.317	0.23794	2.68563	4 X
K01R28H	16.4	0.15	K107N	49.886	299.507	339.619	11.101	0.20643	2.68220	2 X
K01R34O	15.8	0.15	K107N	22.306	70.697	263.811	3.790	0.15847	2.65165	3 X
K01R87R	16.6	0.15	K107N	344.748	31.681	359.324	8.301	0.24268	2.69300	2 X
K01RF2T	16.1	0.15	K107N	280.524	264.393	167.228	25.374	0.28387	2.78851	3 X
K01S04K	16.2	0.15	K107N	341.608	203.516	171.597	10.098	0.23785	2.73218	4 X
K01S11G	16.5	0.15	K107N	311.431	174.131	213.671	6.256	0.18075	2.75878	4 X
K01S84E	16.6	0.15	K107N	29.746	31.263	306.891	3.844	0.11542	2.64053	4 X
K01S90A	15.6	0.15	K107N	43.453	147.258	177.149	14.061	0.10891	2.64210	7 X
K01SB4N	16.3	0.15	K107N	320.442	76.883	341.438	4.342	0.13781	2.69972	6 X
K01SD4E	16.0	0.15	K107N	308.739	106.289	352.500	10.472	0.27667	2.66771	4 X
K01SG2M	16.4	0.15	K107N	23.132	335.251	357.914	4.737	0.16826	2.70961	7 X
K01SM2F	16.7	0.15	K107N	304.841	254.300	163.949	5.260	0.11771	2.73018	6 X
K01SO4X	15.5	0.15	K107N	199.203	168.926	19.925	11.867	0.11952	2.66596	6 X
K01SQ1L	15.7	0.15	K107N	23.981	103.791	209.614	10.549	0.11235	2.77155	6 X
K01SV9T	17.0	0.15	K107N	298.475	65.926	19.057	7.138	0.26359	2.72544	5 X
K01T09Z	16.6	0.15	K107N	1.505	116.615	200.798	31.160	0.35548	2.75945	2 X
K01T20C	15.9	0.15	K107N	343.109	359.603	12.759	16.879	0.29128	2.76064	2 X
K01T44H	15.9	0.15	K107N	334.418	72.317	343.318	7.726	0.26434	2.76294	4 X
K01T97A	15.5	0.15	K107N	302.408	178.378	235.945	5.859	0.07729	2.78101	5 X
K01TA1Y	16.3	0.15	K107N	359.009	10.315	355.606	4.724	0.17398	2.71630	3 X
K01TB9O	15.1	0.15	K107N	34.660	38.369	280.193	13.133	0.09618	2.73581	5 X
K01TC1J	15.4	0.15	K107N	22.494	59.411	245.181	17.179	0.31243	2.75296	5 X
K01TC8N	15.6	0.15	K107N	303.885	168.355	241.672	9.249	0.23943	2.76712	6 X
K01TG7E	15.5	0.15	K107N	312.703	134.845	318.976	7.391	0.18424	2.70472	4 X
K01TH1W	16.3	0.15	K107N	303.041	126.440	282.838	8.387	0.21302	2.78421	4 X
K01TH9S	16.3	0.15	K107N	13.427	117.679	230.912	5.015	0.03100	2.73928	6 X
K01TK1T	16.5	0.15	K107N	345.984	297.648	59.624	12.118	0.18837	2.75254	5 X
K01TK9X	16.0	0.15	K107N	334.764	82.876	310.674	12.669	0.12421	2.68015	5 X
K01TN4Q	15.9	0.15	K107N	12.127	294.605	60.640	15.591	0.21223	2.69746	6 X
K01TO0L	15.8	0.15	K107N	286.131	188.885	253.908	7.166	0.20024	2.78567	5 X
K01TP4N	17.0	0.15	K107N	14.882	160.882	172.357	9.588	0.08359	2.74780	5 X
K01TQ0C	17.3	0.15	K107N	24.723	289.710	25.117	12.756	0.18051	2.72326	2 X
K01U08M	16.0	0.15	K107N	1.293	298.729	51.684	4.642	0.11322	2.75734	6 X
K01U18C	18.9	0.15	K107N	336.729	133.050	277.823	6.166	0.51522	2.73313	2 X
K01U23J	16.2	0.15	K107N	340.257	56.527	317.761	6.881	0.23071	2.75117	4 X
K01U26E	15.5	0.15	K107N	5.970	121.991	228.478	14.819	0.29628	2.71437	5 X
K01U54M	16.0	0.15	K107N	331.322	79.849	301.908	10.499	0.09130	2.76754	4 X
K01U55N	15.7	0.15	K107N	344.755	134.999	229.213	10.918	0.16886	2.73733	5 X
K01UC1O	14.7	0.15	K107N	3.452	111.964	252.452	11.082	0.33530	2.76468	5 X
K01UC4D	16.6	0.15	K107N	344.542	197.443	150.317	14.427	0.25834	2.77478	4 X
K01UH2D	16.5	0.15	K107N	312.909	359.577	43.501	6.922	0.02691	2.75786	5 X
K01UI3V	16.7	0.15	K107N	320.866	239.414	165.069	8.128	0.18800	2.73731	5 X
K01UJ0X	16.9	0.15	K107N	331.918	36.007	355.740	6.122	0.03704	2.71404	4 X
K01UK3T	16.1	0.15	K107N	324.723	135.096	255.959	4.612	0.12111	2.77603	4 X
K01UK5Y	16.0	0.15	K107N	333.835	110.307	282.090	2.977	0.09556	2.76891	5 X

K01UL9W	15.8	0.15	K107N	276.821	91.710	351.477	9.013	0.19080	2.81113	4	X
K01V12R	15.9	0.15	K107N	332.385	111.670	291.282	11.450	0.20465	2.76592	4	X
K01V48E	15.3	0.15	K107N	349.920	150.825	240.884	10.012	0.29877	2.74490	4	X
K01V73Y	15.8	0.15	K107N	359.646	40.592	292.549	12.360	0.22031	2.79070	2	X
K01VA1R	15.5	0.15	K107N	344.130	96.080	281.240	4.070	0.09439	2.78107	4	X
K01VA8P	17.1	0.15	K107N	9.375	36.902	300.085	2.738	0.09426	2.11258	6	X
K01VB4H	15.1	0.15	K107N	37.743	103.479	257.468	11.166	0.27306	2.66070	4	X
K01W41U	15.0	0.15	K107N	294.610	69.085	22.155	23.541	0.36059	2.73926	4	X
K01W46Y	17.2	0.15	K107N	307.822	134.041	237.464	5.591	0.06385	2.15323	5	X
K01W53G	16.3	0.15	K107N	275.575	217.279	240.482	4.398	0.09464	2.77410	6	X
K01X00D	18.4	0.15	K107N	5.601	231.926	64.716	11.416	0.79757	2.04229	6	X
K01X12O	16.1	0.15	K107N	315.456	104.780	290.918	13.961	0.15936	2.84459	5	X
K01X65X	15.5	0.15	K107N	333.096	120.439	272.746	12.130	0.21160	2.84549	4	X
K01X69H	15.5	0.15	K107N	334.010	301.861	73.452	9.590	0.13825	2.79729	5	X
K01XD3Q	16.1	0.15	K107N	339.532	130.495	239.887	8.218	0.15073	2.83656	4	X
K01XH5C	15.8	0.15	K107N	223.836	205.343	272.974	7.461	0.25621	3.00710	3	X
K01XJ1C	15.7	0.15	K107N	339.245	116.557	281.770	7.113	0.30942	2.80265	4	X
K01XO2B	15.7	0.15	K107N	10.613	247.539	75.287	12.860	0.15105	2.88261	6	X
K01Y69H	15.3	0.15	K107N	165.871	232.427	285.601	11.515	0.15689	3.09439	4	X
K02A53T	16.9	0.15	K107N	161.320	40.034	147.505	5.085	0.05948	2.20446	5	X
K02A73T	15.7	0.15	K107N	342.840	267.881	102.992	12.519	0.15826	2.89009	4	X
K02AJ3S	15.9	0.15	K107N	304.333	238.407	255.666	7.943	0.12607	2.78040	4	X
K02B12A	15.0	0.15	K107N	136.445	248.063	319.431	8.771	0.18577	3.17271	5	X
K02B32O	15.1	0.15	K107N	27.427	344.426	294.857	13.349	0.06102	3.17052	2	X
K02C23Y	15.7	0.15	K107N	272.062	160.730	272.653	8.653	0.20984	2.98070	5	X
K02C34X	15.2	0.15	K107N	162.555	206.621	340.127	16.655	0.14712	3.09803	4	X
K02C41E	15.4	0.15	K107N	212.941	216.107	263.754	10.518	0.18258	3.10406	3	X
K02CL4A	15.3	0.15	K107N	180.530	192.948	338.577	11.953	0.05340	3.11123	5	X
K02CM3L	15.3	0.15	K107N	122.797	49.287	173.209	10.508	0.15444	3.17371	5	X
K02C06R	15.8	0.15	K107N	97.861	283.781	330.253	9.868	0.04218	3.11111	5	X
K02CT3T	16.0	0.15	K107N	237.272	303.309	217.538	14.132	0.24273	2.93033	5	X
K02CV6K	17.1	0.15	K107N	102.220	313.798	280.555	6.033	0.09074	2.26502	6	X
K02E02Y	19.3	0.15	K107N	326.255	50.911	343.525	21.750	0.48660	1.72601	4	X
K02E32E	15.9	0.15	K107N	9.119	187.260	160.606	9.833	0.04387	3.11722	5	X
K02E69B	14.8	0.15	K107N	170.624	358.354	182.897	23.038	0.17978	3.17953	5	X
K02E82O	15.5	0.15	K107N	83.711	281.344	356.989	8.940	0.03014	3.13407	6	X
K02EA2J	15.6	0.15	K107N	201.293	227.387	264.396	8.778	0.18149	3.16539	2	X
K02EA3C	16.6	0.15	K107N	35.407	313.292	0.950	6.152	0.13207	2.25360	4	X
K02EB4N	16.8	0.15	K107N	51.312	135.622	146.538	4.175	0.16079	2.30238	7	X
K02EC9N	15.0	0.15	K107N	246.634	139.612	359.125	10.682	0.16592	3.03003	4	X
K02EE7G	15.0	0.15	K107N	112.138	253.429	7.802	10.816	0.03689	3.13955	6	X
K02EG2H	17.9	0.15	K107N	55.814	111.521	158.733	4.874	0.21833	2.33172	4	X
K02F16Y	15.7	0.15	K107N	136.899	224.071	358.401	14.277	0.05333	3.16635	3	X
K02F24R	15.2	0.15	K107N	154.199	210.473	12.443	10.761	0.02938	3.08601	4	X
K02F34O	14.7	0.15	K107N	174.628	186.206	27.909	16.184	0.11076	3.11089	3	X
K02G26C	16.8	0.15	K107N	206.496	310.837	175.753	22.209	0.18968	2.26445	3	X
K02G35H	17.3	0.15	K107N	68.133	155.317	107.268	3.236	0.18374	2.34290	6	X
K02G67C	16.2	0.15	K107N	7.910	136.929	199.407	7.933	0.18806	2.31562	5	X
K02G68W	15.6	0.15	K107N	142.072	217.900	22.625	13.461	0.09604	3.12312	3	X
K02GA4R	16.4	0.15	K107N	22.921	137.176	167.651	12.637	0.25356	2.39727	4	X
K02GC1O	14.6	0.15	K107N	57.059	311.897	6.366	10.169	0.07676	3.13077	6	X
K02GI3A	16.6	0.15	K107N	127.996	294.718	249.527	5.785	0.15225	2.32011	6	X
K02J57Y	16.4	0.15	K107N	13.971	83.320	239.575	4.732	0.16388	2.36274	6	X
K02J60Z	17.3	0.15	K107N	94.457	207.965	40.395	6.883	0.06723	2.32943	5	X
K02J86C	17.1	0.15	K107N	101.539	203.248	36.711	7.197	0.07513	2.32662	4	X
K02JD2O	17.4	0.15	K107N	104.722	351.337	219.566	6.128	0.05899	2.35379	6	X
K02L13N	14.9	0.15	K107N	31.664	20.727	252.404	16.150	0.35338	3.73616	2	X
K02L49K	16.7	0.15	K107N	35.642	54.517	231.371	6.359	0.20962	2.41779	5	X
K02N35A	17.0	0.15	K107N	336.865	70.272	284.123	19.965	0.08678	1.90168	4	X
K02N59S	17.7	0.15	K107N	63.724	155.832	113.894	3.441	0.17171	2.42639	4	X
K02O21C	17.1	0.15	K107N	50.912	166.321	118.133	3.049	0.17348	2.44768	7	X
K02P40D	15.4	0.15	K107N	7.204	78.909	170.121	26.789	0.46288	2.59625	3	W
K02P43P	17.0	0.15	K107N	288.761	228.230	166.736	24.067	0.09592	1.92836	5	X
K02P47Y	14.1	0.15	K107N	357.150	119.821	229.572	9.112	0.30521	3.97717	4	X
K02P95E	16.8	0.15	K107N	8.221	359.890	5.708	8.201	0.23084	2.43337	4	X
K02PD9A	17.0	0.15	K107N	7.380	359.455	321.424	19.960	0.04574	1.91708	4	X
K02PD9J	17.0	0.15	K107N	322.577	56.473	339.640	19.078	0.08870	1.90356	6	X
K02PE1S	16.8	0.15	K107N	8.511	110.338	226.833	4.839	0.20775	2.46495	5	X
K02PH7P	16.5	0.15	K107N	247.471	149.429	343.031	3.835	0.09389	2.38528	5	X
K02PI2E	17.0	0.15	K107N	323.933	57.479	341.372	5.503	0.12830	2.44091	4	X
K02PJ0O	17.0	0.15	K107N	333.900	270.046	101.290	8.607	0.13718	2.47058	5	X
K02Q99N	17.1	0.15	K107N	174.207	203.348	1.642	7.404	0.06164	2.39149	6	X
K02QB2M	17.6	0.15	K107N	74.768	332.934	309.716	4.510	0.15658	2.41458	5	X
K02QB3Y	17.5	0.15	K107N	300.756	185.170	229.437	6.658	0.11806	2.48388	3	X
K02QB6C	17.3	0.15	K107N	292.686	122.853	298.955	6.562	0.10289	2.47329	4	X
K02QB6T	17.6	0.15	K107N	352.348	18.566	342.490	7.530	0.13787	2.47061	4	X
K02R44M	14.9	0.15	K107N	349.995	308.855	65.434	3.803	0.32738	3.95206	2	X
K02R68C	14.3	0.15	K107N	359.269	89.952	257.166	8.285	0.26624	3.96828	3	X
K02R81D	14.4	0.15	K107N	338.790	232.245	157.111	4.172	0.24064	4.00184	5	X
K02R91V	17.0	0.15	K107N	353.612	321.366	10.119	7.257	0.25646	2.54645	5	X
K02RB2O	18.1	0.15	K107N	4.646	9.562	334.840	14.899	0.10219	1.89920	3	X
K02RB4D	14.3	0.15	K107N	354.243	262.060	107.138	3.821	0.24844	3.97505	5	X
K02RF6K	16.9	0.15	K107N	61.364	339.786	320.545	4.200	0.13258	2.44424	4	X
K02RG0H	15.5	0.15	K107N	340.829	83.385	301.765	1.411	0.29145	3.97740	2	X
K02RI1U	17.3	0.15	K107N	302.067	207.498	178.665	22.508	0.08555	1.94136	5	X
K02RI2R	16.1	0.15	K107N	358.196	61.401	260.614	9.677	0.13499	2.55419	5	X

K02RI3B	16.3	0.15	K107N	345.014	60.217	293.722	12.186	0.19711	2.53052	4	X
K02RI3P	16.0	0.15	K107N	321.013	86.807	293.112	14.248	0.06816	2.54537	4	X
K02RI5M	16.7	0.15	K107N	352.443	124.199	209.438	13.202	0.19696	2.54114	5	X
K02RJ5C	16.8	0.15	K107N	36.878	319.914	6.301	7.630	0.11666	2.44894	5	X
K02RJ8G	17.5	0.15	K107N	341.899	328.264	19.577	4.386	0.23112	2.53639	6	X
K02RQ3C	15.8	0.15	K107N	2.676	93.903	261.987	3.690	0.30854	3.95118	3	X
K02S02U	17.0	0.15	K107N	7.723	85.298	231.227	19.287	0.09311	1.92603	6	X
K02S04Y	16.0	0.15	K107N	333.228	167.322	183.223	14.882	0.12674	2.57963	4	X
K02S05L	17.8	0.15	K107N	278.174	72.887	11.630	21.542	0.15477	1.92045	3	X
K02S13Q	16.5	0.15	K107N	301.971	202.876	216.912	20.640	0.12098	1.90930	4	X
K02S21M	17.5	0.15	K107N	345.282	340.811	26.581	6.015	0.14473	2.51434	5	X
K02S35D	17.3	0.15	K107N	350.407	3.129	9.016	20.939	0.09934	1.89685	6	X
K02T00M	17.5	0.15	K107N	345.228	351.809	12.825	13.084	0.17365	2.51636	4	X
K02T16J	17.0	0.15	K107N	299.456	215.008	181.082	11.683	0.18713	2.58146	5	X
K02T48G	16.4	0.15	K107N	298.692	216.232	208.564	9.615	0.18524	2.57493	5	X
K02T52J	16.7	0.15	K107N	337.639	130.639	231.996	5.760	0.36776	2.56478	3	X
K02TB0G	17.5	0.15	K107N	348.082	296.241	55.195	10.314	0.35403	2.52619	4	X
K02TB3C	15.6	0.15	K107N	333.608	144.314	269.383	7.896	0.21294	2.47430	5	X
K02TC2N	17.1	0.15	K107N	342.416	70.309	294.101	7.939	0.19010	2.51553	4	X
K02TM1X	16.6	0.15	K107N	328.392	26.327	347.445	12.743	0.21285	2.55137	4	X
K02TM4H	18.2	0.15	K107N	282.126	228.792	210.134	9.706	0.22781	1.94086	4	X
K02TM7G	16.2	0.15	K107N	328.373	199.447	197.901	13.275	0.17012	2.54438	4	X
K02TN7P	16.4	0.15	K107N	357.840	141.931	227.066	19.853	0.09032	1.90966	6	X
K02TQ3Y	17.0	0.15	K107N	320.271	188.675	221.402	20.181	0.07465	1.91107	5	X
K02TT3H	14.8	0.15	K107N	4.998	108.864	275.863	9.901	0.22657	2.52203	6	X
K02TT7R	16.4	0.15	K107N	336.150	341.005	37.857	5.816	0.06968	2.56265	4	X
K02U15E	16.9	0.15	K107N	333.585	46.195	319.787	14.038	0.28061	2.56409	3	X
K02U15J	16.9	0.15	K107N	0.026	269.692	67.987	13.222	0.16668	2.57404	6	X
K02U22X	16.2	0.15	K107N	332.136	326.783	50.849	9.364	0.20765	2.58533	5	X
K02U36L	16.6	0.15	K107N	10.013	118.391	216.687	26.157	0.15240	2.54441	6	X
K02U38S	16.7	0.15	K107N	345.579	131.750	226.435	16.114	0.22332	2.56678	6	X
K02U41A	16.1	0.15	K107N	299.441	154.342	221.087	5.525	0.05057	2.68842	5	X
K02V07F	17.3	0.15	K107N	321.990	16.579	7.709	3.797	0.22953	2.58372	4	X
K02V08U	16.6	0.15	K107N	326.929	116.164	275.251	3.748	0.19498	2.55369	4	X
K02V14X	15.7	0.15	K107N	8.554	9.182	351.498	6.123	0.33690	3.97718	3	X
K02V29K	16.3	0.15	K107N	310.935	197.434	194.443	11.019	0.20349	2.61935	6	X
K02V31P	16.8	0.15	K107N	295.097	207.384	222.122	7.305	0.18389	2.59962	5	X
K02V34D	15.7	0.15	K107N	319.479	142.838	239.363	12.481	0.11617	2.64845	5	X
K02V35U	15.8	0.15	K107N	277.739	226.737	234.311	21.041	0.15360	2.58421	4	X
K02V42F	16.9	0.15	K107N	345.519	15.542	356.046	4.371	0.27621	2.54261	5	X
K02V46W	16.5	0.15	K107N	264.733	278.430	207.053	11.312	0.24867	2.56895	4	X
K02V56Q	15.5	0.15	K107N	297.620	163.595	247.360	21.201	0.08870	2.64553	5	X
K02V79O	16.6	0.15	K107N	322.741	285.625	115.215	2.509	0.20679	2.57233	5	X
K02V86T	16.6	0.15	K107N	305.350	168.234	244.771	13.308	0.24357	2.58428	3	X
K02VB8O	15.7	0.15	K107N	313.831	107.944	280.621	15.373	0.21685	2.58638	3	X
K02VC1J	15.3	0.15	K107N	204.631	210.561	285.814	10.298	0.33078	2.75531	6	X
K02VD3N	17.4	0.15	K107N	341.434	288.217	67.584	1.691	0.30505	2.58353	3	X
K02W06G	16.8	0.15	K107N	332.783	139.747	254.107	10.964	0.25831	2.54429	4	X
K02X26W	16.4	0.15	K107N	302.263	56.351	19.349	13.188	0.24340	2.56707	4	X
K02X32G	15.9	0.15	K107N	296.142	150.158	270.735	12.096	0.24129	2.62054	4	X
K02X36L	15.5	0.15	K107N	260.218	148.247	300.281	12.736	0.21404	2.66639	6	X
K02X38F	15.3	0.15	K107N	320.685	104.500	286.401	26.203	0.24709	2.61672	3	X
K02X41Q	17.0	0.15	K107N	353.302	90.075	281.437	3.883	0.25407	2.54962	3	X
K02X43W	15.9	0.15	K107N	350.030	97.667	295.980	5.058	0.21162	2.52711	5	X
K02X53F	16.9	0.15	K107N	315.616	168.410	268.096	4.425	0.25377	2.55471	4	X
K02X55W	14.6	0.15	K107N	195.854	230.553	280.847	24.212	0.12002	2.79489	5	X
K02X70N	15.9	0.15	K107N	310.229	329.790	72.294	10.644	0.10344	2.64632	5	X
K02X74W	16.4	0.15	K107N	320.140	118.084	292.607	3.561	0.20646	2.58512	5	X
K02X80L	15.5	0.15	K107N	284.199	164.318	295.205	12.947	0.11552	2.62588	6	X
K02Y02U	15.4	0.15	K107N	298.378	95.996	17.691	13.202	0.19980	2.52962	5	X
K02Y06G	16.2	0.15	K107N	340.919	327.193	93.646	12.329	0.18003	2.53194	6	X
K02Y15S	16.9	0.15	K107N	292.355	144.380	289.304	12.639	0.25479	2.65127	3	X
K02Y31S	16.4	0.15	K107N	290.267	133.547	314.443	5.876	0.27621	2.65221	3	X
K03A00W	16.1	0.15	K107N	334.364	264.810	141.445	8.607	0.22967	2.58340	5	X
K03A21X	16.3	0.15	K107N	327.029	73.570	321.159	4.995	0.03372	2.69674	4	X
K03A32R	15.6	0.15	K107N	180.345	231.144	297.219	8.024	0.09252	2.76351	4	X
K03A34R	15.4	0.15	K107N	346.383	269.211	126.484	6.981	0.19749	2.55283	5	X
K03A40G	16.4	0.15	K107N	299.500	237.502	209.209	3.153	0.23335	2.62686	4	X
K03A59X	15.9	0.15	K107N	270.546	139.236	316.365	12.336	0.16392	2.70584	4	X
K03A63G	15.9	0.15	K107N	314.263	116.605	288.624	5.016	0.12292	2.67420	7	X
K03A64T	15.4	0.15	K107N	227.889	162.776	333.185	11.094	0.12695	2.70233	4	X
K03A68W	15.6	0.15	K107N	310.849	109.348	319.832	10.864	0.16456	2.62332	4	X
K03A94B	17.4	0.15	K107N	295.551	101.506	342.513	12.870	0.26422	2.63834	3	X
K03A94K	15.5	0.15	K107N	319.100	57.030	29.243	21.890	0.19739	2.62878	6	X
K03B23H	16.9	0.15	K107N	316.036	246.526	171.261	12.894	0.26048	2.63063	4	X
K03B24H	16.5	0.15	K107N	227.103	273.831	224.249	7.991	0.19972	2.76045	5	X
K03B30M	16.2	0.15	K107N	186.245	218.724	311.055	8.485	0.15449	2.79617	3	X
K03B41H	16.5	0.15	K107N	227.866	212.696	294.472	2.544	0.02438	2.69458	6	X
K03B51D	15.9	0.15	K107N	295.956	298.862	119.100	8.804	0.26810	2.69816	5	X
K03C08L	17.2	0.15	K107N	289.744	207.255	226.290	6.283	0.34351	2.65339	4	X
K03E43Q	16.5	0.15	K107N	306.887	275.627	180.820	27.208	0.40913	2.59294	4	X
K03F05C	18.2	0.15	K107N	293.968	270.600	189.307	5.824	0.60893	1.91729	5	X
K03F45O	15.8	0.15	K107N	67.559	291.658	345.373	3.734	0.12765	3.01331	6	X
K03F63C	16.1	0.15	K107N	19.243	116.134	183.346	17.001	0.11626	3.11235	6	X
K03G02L	15.1	0.15	K107N	345.847	152.901	189.513	21.838	0.02818	3.05093	5	X
K03H12K	15.2	0.15	K107N	92.140	63.268	185.616	15.709	0.22573	3.13281	4	X

K03H12V	15.5	0.15	K107N	137.089	40.823	179.225	13.686	0.10036	3.00171	4	X
K03H26B	15.7	0.15	K107N	26.457	95.659	216.656	9.741	0.13723	3.11221	5	X
K03H50R	15.3	0.15	K107N	82.528	52.051	206.210	14.267	0.23305	3.18328	4	X
K03K32L	15.0	0.15	K107N	12.508	258.401	72.919	13.328	0.14036	3.13744	6	X
K03M04J	18.8	0.15	K107N	349.354	270.603	78.294	5.316	0.56067	2.30787	2	X
K03O13O	17.0	0.15	K107N	46.249	323.980	317.619	5.902	0.17948	2.23888	7	X
K03Q04R	16.8	0.15	K107N	35.462	13.668	261.631	4.961	0.13644	2.30835	7	X
K03Q08J	17.0	0.15	K107N	305.163	130.345	252.098	5.603	0.12330	2.33304	3	X
K03Q19R	16.9	0.15	K107N	12.179	318.916	353.354	5.161	0.15951	2.30245	6	X
K03Q23U	17.4	0.15	K107N	28.001	52.319	274.207	3.866	0.16984	2.23154	4	X
K03Q28G	17.0	0.15	K107N	8.638	357.394	345.058	4.081	0.18237	2.25553	3	X
K03Q44S	17.3	0.15	K107N	8.857	34.523	300.650	2.283	0.15560	2.27139	6	X
K03Q56M	16.1	0.15	K107N	312.536	19.007	4.100	7.305	0.11660	2.31926	4	X
K03Q64R	15.6	0.15	K107N	350.936	356.653	30.073	26.520	0.24562	2.29909	5	X
K03Q74K	16.7	0.15	K107N	346.335	67.950	284.560	4.372	0.22012	2.28725	5	X
K03Q78O	16.5	0.15	K107N	331.237	142.771	237.361	4.838	0.24775	2.32253	7	X
K03Q80V	17.3	0.15	K107N	332.462	263.054	99.768	3.977	0.23007	2.30648	4	X
K03R02F	16.6	0.15	K107N	354.592	289.237	47.761	10.838	0.17933	2.29745	4	X
K03R06X	17.5	0.15	K107N	72.097	296.905	329.791	3.820	0.14241	2.25431	5	X
K03R13Z	16.9	0.15	K107N	327.881	97.949	270.792	9.997	0.23524	2.32390	3	X
K03R26L	17.1	0.15	K107N	9.420	83.528	218.502	21.529	0.29554	2.31856	3	X
K03S06N	17.3	0.15	K107N	336.350	147.475	212.085	7.521	0.32451	2.31761	4	X
K03S07C	16.7	0.15	K107N	332.584	33.576	1.598	7.254	0.11182	2.26371	5	X
K03S19A	17.2	0.15	K107N	353.435	18.872	339.002	6.326	0.12913	2.27569	4	X
K03S29A	17.6	0.15	K107N	15.257	62.709	251.965	4.485	0.17776	2.31108	2	X
K03S43S	17.1	0.15	K107N	331.688	43.621	350.519	4.749	0.16209	2.26073	6	X
K03S55T	17.2	0.15	K107N	321.964	111.331	297.432	2.573	0.14054	2.26897	4	X
K03S71P	16.5	0.15	K107N	292.582	157.659	256.834	5.081	0.22782	2.33405	4	X
K03S98N	16.5	0.15	K107N	312.413	145.388	252.472	6.244	0.11187	2.31368	4	X
K03SB7V	16.8	0.15	K107N	272.701	74.082	9.049	4.592	0.11011	2.33219	5	X
K03SB9C	16.4	0.15	K107N	13.749	38.734	282.968	5.966	0.12713	2.31962	5	X
K03SD9B	16.8	0.15	K107N	23.977	334.017	343.048	5.535	0.23386	2.29683	5	X
K03SE5P	16.2	0.15	K107N	18.187	43.928	303.536	7.307	0.14944	2.26355	4	X
K03SH2H	17.8	0.15	K107N	6.165	75.011	281.031	2.414	0.14464	2.26998	5	X
K03SK7R	17.1	0.15	K107N	337.735	318.830	34.850	3.482	0.23155	2.34695	4	X
K03SK9B	16.6	0.15	K107N	23.322	112.467	213.346	5.446	0.16556	2.24011	5	X
K03SL0A	16.3	0.15	K107N	7.363	104.022	244.138	4.623	0.21527	2.29309	4	X
K03SL9F	17.1	0.15	K107N	317.593	247.120	177.461	22.495	0.32228	2.28545	3	X
K03SN1D	17.0	0.15	K107N	325.307	237.909	150.898	6.283	0.10170	2.28440	5	X
K03SO3B	18.3	0.15	K107N	327.454	308.255	63.654	1.434	0.23041	2.32035	3	X
K03SQ1F	16.7	0.15	K107N	357.766	8.128	356.623	6.242	0.05028	2.28502	5	X
K03SQ3A	17.2	0.15	K107N	317.699	255.967	144.077	5.287	0.12795	2.30012	5	X
K03SX4X	18.1	0.15	K107N	282.289	55.903	17.343	7.321	0.07753	2.30660	2	S
K03T38Q	17.4	0.15	K107N	298.126	119.021	298.945	5.473	0.10239	2.32262	3	X
K03U22O	17.5	0.15	K107N	354.388	185.066	164.198	6.589	0.22887	2.31416	2	X
K03U54H	16.4	0.15	K107N	0.122	53.705	285.234	5.910	0.13756	2.35669	3	X
K03U58F	17.1	0.15	K107N	28.051	332.806	341.384	7.298	0.12661	2.30747	4	X
K03U66Z	17.0	0.15	K107N	0.796	128.673	221.669	4.312	0.13709	2.32714	6	X
K03U92R	16.6	0.15	K107N	4.619	1.865	335.989	5.124	0.20759	2.32074	6	X
K03UA8N	17.6	0.15	K107N	99.250	18.659	222.169	8.358	0.07805	2.37510	5	X
K03UB8M	17.8	0.15	K107N	352.289	27.081	340.263	3.815	0.15800	2.29434	3	X
K03UE4D	17.5	0.15	K107N	348.832	101.969	273.430	1.541	0.23780	2.30861	4	X
K03UI8S	16.8	0.15	K107N	30.458	336.165	345.160	5.857	0.18597	2.30313	4	X
K03UK3E	17.2	0.15	K107N	27.142	79.954	239.952	3.884	0.11724	2.33032	4	X
K03UL9R	17.2	0.15	K107N	275.155	189.609	289.499	2.709	0.19061	2.29574	5	X
K03UM6X	16.2	0.15	K107N	20.283	49.411	266.420	4.065	0.15875	2.34803	6	X
K03UN1Q	18.3	0.15	K107N	302.814	70.858	11.645	6.383	0.17240	2.28964	3	X
K03UP9Z	17.2	0.15	K107N	9.391	47.532	291.217	1.947	0.27644	2.30825	4	X
K03UR6B	16.6	0.15	K107N	341.560	321.001	29.689	2.858	0.19199	2.37021	5	X
K03UT0B	17.3	0.15	K107N	347.906	187.873	151.209	2.837	0.22448	2.36589	2	X
K03UX0H	16.3	0.15	K107N	40.998	47.960	241.376	4.785	0.14508	2.34657	6	X
K03UY2F	16.9	0.15	K107N	329.241	87.888	271.920	5.748	0.13314	2.31805	4	X
K03W06O	17.2	0.15	K107N	347.324	213.509	158.826	6.836	0.25419	2.31799	4	X
K03W17D	16.6	0.15	K107N	342.974	24.242	4.414	6.229	0.20881	2.31433	3	X
K03W18X	17.8	0.15	K107N	330.343	53.390	351.968	5.635	0.18344	2.31701	3	X
K03W59S	18.3	0.15	K107N	336.324	277.273	99.859	2.055	0.19119	2.34322	2	X
K03W63Y	16.8	0.15	K107N	316.146	325.625	60.920	3.548	0.17582	2.38787	4	X
K03W86Z	16.9	0.15	K107N	292.945	173.410	260.259	4.935	0.20056	2.37290	3	X
K03W88W	17.7	0.15	K107N	315.352	204.959	217.613	4.203	0.20922	2.32213	3	X
K03WB7L	16.6	0.15	K107N	225.634	199.957	307.498	4.645	0.17041	2.40118	6	X
K03WC9S	17.1	0.15	K107N	289.292	62.146	6.270	5.591	0.13578	2.36995	4	X
K03WD1G	18.1	0.15	K107N	337.906	65.063	315.822	1.831	0.21778	2.34125	4	X
K03WD3G	16.7	0.15	K107N	354.437	107.392	253.355	2.910	0.24006	2.33022	4	X
K03WD9C	16.2	0.15	K107N	22.793	137.954	240.871	4.262	0.17247	2.26570	5	X
K03WG1U	16.9	0.15	K107N	325.508	293.677	114.472	6.516	0.23887	2.32494	3	X
K03WG8S	17.0	0.15	K107N	271.481	304.328	161.193	5.279	0.18299	2.34836	5	X
K03X08F	16.2	0.15	K107N	348.010	108.396	291.964	6.262	0.26077	2.28862	4	X
K03Y25E	16.7	0.15	K107N	274.278	8.815	83.547	3.140	0.13909	2.40371	5	X
K03Y55G	17.0	0.15	K107N	241.720	32.461	95.832	3.451	0.12312	2.39974	6	X
K03Y70Z	16.8	0.15	K107N	247.390	194.215	288.011	4.345	0.17821	2.40559	3	X
K03Y74R	16.9	0.15	K107N	326.260	125.333	277.835	8.969	0.22678	2.34731	4	X
K03Y98T	17.3	0.15	K107N	305.151	282.209	138.252	2.717	0.20174	2.37583	5	X
K03YB6L	16.8	0.15	K107N	327.776	316.540	74.570	3.467	0.18979	2.42152	6	X
K04A01W	14.9	0.15	K107N	157.399	252.431	264.157	11.605	0.20361	2.66539	5	X
K04A14J	15.5	0.15	K107N	151.877	46.368	152.059	5.645	0.13582	2.53285	6	X
K04B14V	16.4	0.15	K107N	173.010	212.228	299.401	13.450	0.02770	2.59445	3	X

K04B86V	16.3	0.15	K107N	213.725	227.333	253.204	6.592	0.16758	2.58767	4	X
K04B95J	15.0	0.15	K107N	153.672	236.288	286.474	13.277	0.15743	2.71543	7	X
K04BC1Y	16.8	0.15	K107N	42.519	263.808	18.538	19.667	0.05946	1.89103	5	X
K04BD0S	16.2	0.15	K107N	49.722	354.792	298.187	14.123	0.14724	2.54477	6	X
K04C07L	16.6	0.15	K107N	158.878	216.570	2.251	3.676	0.19188	2.52881	4	X
K04C17E	16.7	0.15	K107N	100.894	120.727	127.284	3.815	0.09124	2.61064	5	X
K04C93M	16.7	0.15	K107N	246.993	279.636	203.838	6.041	0.07186	2.47310	6	X
K04CA5W	15.7	0.15	K107N	144.332	244.391	284.420	11.568	0.05614	2.71578	3	X
K04CB1B	16.4	0.15	K107N	119.221	251.437	336.518	9.253	0.04714	2.62169	4	X
K04CB1P	16.2	0.15	K107N	30.840	11.411	311.148	2.227	0.17557	2.59522	4	X
K04D46U	15.8	0.15	K107N	242.140	268.990	170.755	22.065	0.05782	2.66666	5	X
K04E22O	16.0	0.15	K107N	208.603	155.043	345.023	21.941	0.01628	2.61927	4	X
K04E23S	17.7	0.15	K107N	253.979	260.869	169.611	20.146	0.10041	1.89268	4	X
K04E32W	15.8	0.15	K107N	167.122	226.812	284.540	10.406	0.14086	2.75199	5	X
K04E57T	16.1	0.15	K107N	181.660	207.736	293.729	11.538	0.17653	2.70304	4	X
K04E59L	15.9	0.15	K107N	146.721	228.214	332.347	12.290	0.10616	2.69173	4	X
K04E79B	16.7	0.15	K107N	229.369	45.618	80.371	3.134	0.01767	2.61454	5	X
K04F04W	17.2	0.15	K107N	20.784	325.510	9.880	19.164	0.11040	1.87746	4	X
K04F30C	16.5	0.15	K107N	86.594	90.989	152.969	24.877	0.05788	1.92060	5	X
K04F53L	16.5	0.15	K107N	132.923	240.975	328.513	10.841	0.14584	2.64960	3	X
K04F64A	15.7	0.15	K107N	253.566	72.544	23.983	22.223	0.06663	2.67103	4	X
K04FB2F	16.9	0.15	K107N	51.032	102.269	181.743	12.869	0.20156	2.79940	5	X
K04FD8R	15.9	0.15	K107N	167.419	328.783	210.828	13.096	0.19652	2.68216	4	X
K04G41T	16.4	0.15	K107N	232.083	203.908	306.276	4.033	0.23769	2.55854	4	X
K04G44F	15.8	0.15	K107N	13.015	108.314	190.778	12.846	0.15391	2.86301	4	X
K04G55C	17.5	0.15	K107N	78.820	253.180	18.799	7.975	0.05644	2.72799	5	X
K04G73G	16.1	0.15	K107N	137.109	15.668	220.889	12.878	0.15031	2.68582	5	X
K04H32O	17.2	0.15	K107N	316.520	202.018	200.261	23.253	0.11174	1.88132	6	X
K04J19B	15.9	0.15	K107N	188.599	134.708	39.703	5.579	0.09412	2.71081	4	X
K04K12H	16.1	0.15	K107N	124.048	12.104	215.758	11.715	0.12530	2.75769	5	X
K04K12R	15.9	0.15	K107N	64.472	106.890	138.940	11.048	0.18390	2.99979	4	X
K04L17Z	14.9	0.15	K107N	15.082	43.306	330.631	7.405	0.31740	3.10103	5	X
K04M03X	15.4	0.15	K107N	248.356	156.145	288.239	12.596	0.10848	3.11353	7	X
K04M04Y	15.5	0.15	K107N	15.420	239.204	75.321	14.126	0.26773	3.15909	4	X
K04N09V	14.9	0.15	K107N	347.321	59.589	296.952	13.334	0.24885	3.17563	5	X
K04N31D	15.2	0.15	K107N	14.178	30.151	308.173	16.681	0.17539	3.14362	3	X
K04N31E	14.8	0.15	K107N	31.676	44.615	271.176	13.116	0.19435	3.13051	5	X
K04O10N	15.8	0.15	K107N	355.770	38.605	329.551	14.765	0.30293	3.13272	3	X
K04P43X	15.1	0.15	K107N	1.767	266.407	137.538	11.249	0.10834	2.96109	4	X
K04P75T	14.5	0.15	K107N	20.262	11.651	322.241	22.683	0.09757	3.17192	5	X
K04P92L	15.0	0.15	K107N	329.946	102.907	304.154	10.657	0.08760	3.13118	7	X
K04PA5N	14.8	0.15	K107N	13.403	71.664	274.900	14.125	0.12278	3.13026	4	X
K04Q27L	14.9	0.15	K107N	358.816	262.167	105.132	8.898	0.14680	3.18969	5	X
K04R21O	15.8	0.15	K107N	354.213	192.770	172.330	5.922	0.15648	3.21862	5	X
K04R33M	14.6	0.15	K107N	83.391	266.904	0.865	16.704	0.09758	3.14797	4	X
K04R45K	16.1	0.15	K107N	10.848	14.040	330.880	4.466	0.17772	3.20086	2	X
K04R61C	15.2	0.15	K107N	331.052	33.236	9.879	29.698	0.27411	3.28472	2	X
K04RA2W	15.8	0.15	K107N	350.771	73.126	292.509	5.171	0.08630	3.21917	6	X
K04RC3P	14.7	0.15	K107N	306.230	158.761	268.780	15.723	0.11351	3.16978	4	X
K04RE4U	15.0	0.15	K107N	15.884	53.654	280.710	13.521	0.24321	3.16549	3	X
K04RF7Z	15.2	0.15	K107N	66.650	303.713	334.449	14.926	0.08161	3.23571	2	X
K04RH3Y	15.8	0.15	K107N	0.367	212.056	186.356	17.655	0.27337	3.05712	3	X
K04RJ0B	14.9	0.15	K107N	311.428	259.574	198.698	24.814	0.28208	3.18643	5	X
K04RJ0Y	15.4	0.15	K107N	344.638	218.067	187.592	15.515	0.25652	3.19533	5	X
K04RJ3L	14.4	0.15	K107N	34.096	348.753	350.262	10.299	0.22560	3.14679	7	X
K04RK6Y	14.5	0.15	K107N	38.120	29.127	277.698	20.980	0.07860	3.18709	4	X
K04RL2Q	14.9	0.15	K107N	24.435	86.587	248.704	17.897	0.10344	3.22446	6	X
K04RM4W	16.1	0.15	K107N	48.284	138.497	158.548	2.254	0.13834	3.14775	6	X
K04RN8J	16.1	0.15	K107N	38.644	336.042	339.672	5.790	0.10619	3.20824	2	X
K04RP1A	15.3	0.15	K107N	326.026	208.639	220.054	13.596	0.23405	3.19888	2	X
K04RV9L	15.7	0.15	K107N	7.069	134.920	172.066	17.857	0.13354	3.38095	3	X
K04RV9Z	15.3	0.15	K107N	58.424	94.288	212.624	14.179	0.02241	3.16515	4	X
K04S15A	15.7	0.15	K107N	352.832	257.969	154.853	17.169	0.21795	3.11110	4	X
K04T08O	14.5	0.15	K107N	354.371	256.865	150.843	25.789	0.18641	3.17847	4	W
K04T41M	14.8	0.15	K107N	266.621	119.532	3.638	8.056	0.02132	3.24726	7	X
K04TA0O	14.8	0.15	K107N	349.206	90.453	274.018	20.028	0.14677	3.40188	4	X
K04TB7A	14.4	0.15	K107N	281.827	232.114	221.631	8.838	0.09557	3.25178	9	X
K04W07Z	17.7	0.15	K107N	40.351	225.323	70.533	3.479	0.13120	2.13763	7	X
K04XI4E	17.3	0.15	K107N	313.030	354.092	49.260	4.228	0.13992	2.16241	4	X
K05A35Y	16.7	0.15	K107N	163.467	284.329	260.698	4.605	0.10018	2.27706	6	X
K05B05Y	17.2	0.15	K107N	157.100	138.638	56.587	3.297	0.07999	2.25639	4	X
K05C09S	17.1	0.15	K107N	217.532	154.440	354.943	5.466	0.11638	2.25233	4	X
K05C14A	17.0	0.15	K107N	112.504	256.921	339.004	6.821	0.09555	2.31574	8	X
K05C20E	16.5	0.15	K107N	141.624	221.861	301.963	13.866	0.08486	2.42302	2	X
K05E17U	17.3	0.15	K107N	150.668	220.104	355.781	6.384	0.08134	2.31940	4	X
K05E46W	17.0	0.15	K107N	181.556	322.511	227.137	3.830	0.08616	2.26667	5	X
K05EA8C	17.3	0.15	K107N	73.870	286.796	345.143	5.121	0.21085	2.37560	4	X
K05EE0G	17.3	0.15	K107N	310.007	56.514	3.069	4.647	0.08030	2.19602	4	X
K05EF4F	16.2	0.15	K107N	55.174	298.965	350.704	5.309	0.11639	2.40970	6	X
K05EL3O	17.1	0.15	K107N	141.766	203.403	19.401	24.181	0.25119	2.40692	3	X
K05ER6B	17.0	0.15	K107N	149.107	333.826	217.374	9.298	0.15155	2.39234	5	X
K05F04G	17.1	0.15	K107N	123.105	104.306	118.873	3.563	0.16008	2.41053	6	X
K05G02R	17.0	0.15	K107N	102.395	177.902	60.039	3.419	0.14171	2.47198	6	X
K05G10B	16.0	0.15	K107N	72.051	266.698	328.483	29.118	0.20685	2.56511	4	X
K05G59E	18.0	0.15	K107N	323.965	242.760	194.974	16.099	0.60088	2.11061	4	X
K05G59T	17.4	0.15	K107N	229.319	333.156	162.754	3.413	0.13396	2.31412	4	X

K05GA8T	17.4	0.15	K107N	111.545	108.752	124.471	1.990	0.12743	2.46799	5 X
K05GB5Y	17.5	0.15	K107N	90.000	33.948	190.910	10.755	0.07358	2.54273	5 X
K05GI7V	16.8	0.15	K107N	333.813	219.335	157.560	4.754	0.17984	2.25857	6 X
K05J12J	17.6	0.15	K107N	310.175	358.966	45.495	5.730	0.03617	2.41401	4 X
K05J12S	16.4	0.15	K107N	299.676	182.977	212.100	7.404	0.15245	2.47889	4 X
K05J16V	16.0	0.15	K107N	28.266	25.515	261.431	11.212	0.17282	2.62404	4 X
K05J47L	15.8	0.15	K107N	303.665	40.425	47.766	24.085	0.22516	2.27337	4 X
K05J50H	17.4	0.15	K107N	122.248	127.872	102.657	3.382	0.05152	2.46082	6 X
K05J62P	16.9	0.15	K107N	58.892	41.499	230.899	6.468	0.18240	2.59763	6 X
K05J67Z	16.9	0.15	K107N	113.616	327.672	277.006	4.327	0.28456	2.45633	4 X
K05JC8C	16.4	0.15	K107N	39.893	85.697	221.166	16.553	0.26379	2.60158	4 X
K05JD3A	17.0	0.15	K107N	31.987	75.906	201.187	8.719	0.09290	2.68690	4 X
K05JD7C	16.9	0.15	K107N	54.330	167.975	105.134	3.424	0.20400	2.54268	4 X
K05JH8N	16.4	0.15	K107N	10.112	92.502	218.639	15.125	0.25901	2.65960	3 X
K05JH8X	17.4	0.15	K107N	203.069	347.581	170.686	3.678	0.11659	2.40238	6 X
K05JI1B	15.8	0.15	K107N	19.290	240.723	66.948	10.563	0.22643	2.67764	6 X
K05K13A	16.1	0.15	K107N	40.108	131.192	183.514	13.041	0.19595	2.59595	6 X
K05L10X	16.8	0.15	K107N	37.263	64.855	196.202	10.084	0.18468	2.75143	5 X
K05L45N	17.3	0.15	K107N	60.437	54.325	214.954	11.154	0.16215	2.62434	4 X
K05L46B	16.5	0.15	K107N	72.706	40.941	194.407	11.101	0.08768	2.69029	4 X
K05M20Z	15.6	0.15	K107N	21.550	16.176	304.078	15.626	0.20943	2.75986	4 X
K05M22D	16.8	0.15	K107N	116.627	306.673	300.357	3.721	0.12038	2.61139	6 X
K05M48Z	16.0	0.15	K107N	60.184	212.050	115.720	15.347	0.14289	2.59224	5 X
K05N00H	15.3	0.15	K107N	12.022	109.801	236.899	12.914	0.30553	2.78645	4 X
K05N17R	15.9	0.15	K107N	23.810	341.949	337.240	14.045	0.28967	2.77874	4 X
K05N21U	16.3	0.15	K107N	4.723	185.215	154.535	4.972	0.20837	2.79184	6 X
K05N73A	15.6	0.15	K107N	326.327	97.811	284.833	13.785	0.16449	2.83793	4 X
K05NA2B	16.6	0.15	K107N	66.980	317.855	306.908	10.940	0.14130	2.76237	3 X
K05O01K	17.0	0.15	K107N	356.002	267.264	70.116	8.188	0.36296	2.88449	2 X
K05O16D	16.1	0.15	K107N	327.207	236.715	158.112	6.539	0.07598	2.76200	4 X
K05O22N	15.9	0.15	K107N	32.353	342.535	321.711	12.605	0.12619	2.77950	4 X
K05O22V	15.3	0.15	K107N	16.305	346.863	332.698	7.607	0.22036	2.79344	4 X
K05P03M	16.6	0.15	K107N	329.925	108.750	265.804	11.179	0.25801	2.90417	2 X
K05P15R	16.6	0.15	K107N	358.890	19.799	350.731	4.405	0.22231	2.77569	2 X
K05Q09R	16.7	0.15	K107N	35.479	3.362	318.750	2.265	0.06690	2.75634	6 X
K05Q42H	16.4	0.15	K107N	18.036	198.871	169.238	14.029	0.23440	2.73089	6 X
K05Q65P	15.6	0.15	K107N	341.788	154.383	220.428	7.765	0.22274	2.84073	5 X
K05Q68R	15.7	0.15	K107N	340.089	22.701	349.717	23.710	0.26586	2.84937	2 X
K05Q89A	16.2	0.15	K107N	322.014	178.841	190.121	12.507	0.15087	3.08276	6 X
K05QA4D	16.8	0.15	K107N	323.860	118.608	303.270	4.026	0.10987	2.74265	5 X
K05QB3X	15.8	0.15	K107N	348.960	28.307	10.524	13.749	0.19699	2.79331	3 X
K05QB7L	16.9	0.15	K107N	5.265	22.019	347.853	6.065	0.07191	2.73521	4 X
K05QC8P	16.5	0.15	K107N	11.898	272.964	64.830	2.989	0.07271	2.86230	5 X
K05QE1S	16.0	0.15	K107N	219.672	153.401	351.044	6.404	0.02209	2.77315	3 X
K05QE2F	15.4	0.15	K107N	316.071	175.465	197.991	12.204	0.10630	3.09004	5 X
K05QG5X	15.8	0.15	K107N	329.904	237.130	162.336	13.324	0.16650	2.92740	4 X
K05QG6S	16.1	0.15	K107N	356.272	185.690	177.999	18.611	0.28278	2.78766	6 X
K05QH6U	16.5	0.15	K107N	329.983	294.095	95.693	3.149	0.09002	2.90639	7 X
K05QH7G	15.7	0.15	K107N	9.623	343.166	346.506	10.631	0.05252	2.94032	5 X
K05R02R	15.6	0.15	K107N	349.677	50.285	0.426	7.485	0.22078	2.77696	4 W
K05R08Q	15.9	0.15	K107N	5.309	18.689	347.799	5.319	0.05683	2.81217	6 X
K05R31J	15.1	0.15	K107N	351.384	6.417	2.660	18.911	0.19154	2.99349	4 X
K05S14T	16.7	0.15	K107N	337.883	5.416	350.939	11.062	0.21430	3.03501	2 X
K05S15L	16.3	0.15	K107N	359.438	124.599	199.419	9.062	0.04475	3.09813	6 X
K05S28M	16.0	0.15	K107N	289.946	203.267	235.738	5.335	0.06108	2.92230	8 X
K05S28S	15.9	0.15	K107N	272.651	199.988	218.245	8.951	0.09157	3.16663	4 X
K05S51T	16.0	0.15	K107N	329.429	158.493	203.961	8.799	0.13243	3.14833	5 X
K05S65F	15.1	0.15	K107N	292.768	187.425	211.896	9.287	0.09961	3.08656	6 X
K05S65R	14.7	0.15	K107N	74.588	16.279	227.612	9.196	0.06457	3.11677	7 X
K05SA0R	17.2	0.15	K107N	4.559	29.676	330.006	3.913	0.21248	2.89067	3 X
K05SA2O	15.4	0.15	K107N	234.693	221.266	235.690	7.734	0.05545	3.17428	5 X
K05SA4V	15.8	0.15	K107N	355.397	298.321	31.787	6.317	0.21600	3.06502	5 X
K05SC7T	15.8	0.15	K107N	288.926	203.817	193.569	9.289	0.09589	3.16537	4 X
K05SD8W	17.1	0.15	K107N	323.544	2.270	33.588	5.078	0.09063	2.94051	4 X
K05SF7B	15.9	0.15	K107N	347.603	342.017	24.937	9.286	0.11263	2.97649	4 X
K05SH0N	15.8	0.15	K107N	342.198	130.374	209.730	9.868	0.08801	3.11593	6 X
K05SH5T	16.4	0.15	K107N	353.252	139.307	218.322	9.913	0.07405	2.97375	2 S
K05SJ2J	16.0	0.15	K107N	29.895	93.937	206.789	12.566	0.20411	3.05672	2 X
K05SK5B	15.6	0.15	K107N	337.042	212.972	166.186	8.249	0.07104	2.95073	5 X
K05SK7Y	16.1	0.15	K107N	321.236	77.639	329.478	5.149	0.09167	2.94352	6 X
K05SK9K	16.0	0.15	K107N	337.141	235.362	196.224	21.761	0.06639	2.66577	6 X
K05SL9C	15.8	0.15	K107N	331.967	165.765	225.991	11.789	0.40517	3.04518	2 X
K05SN1Q	15.5	0.15	K107N	330.428	171.034	210.659	9.287	0.06424	3.07649	3 X
K05SN3O	16.8	0.15	K107N	8.250	302.870	33.999	7.547	0.21774	3.01363	2 X
K05SO0M	16.2	0.15	K107N	176.985	308.612	225.747	12.055	0.05806	3.03799	3 X
K05SO0Z	15.3	0.15	K107N	66.816	35.072	212.706	16.722	0.29146	3.08081	3 X
K05SO3H	17.2	0.15	K107N	10.496	111.452	207.643	21.084	0.06490	1.87182	4 X
K05SS9M	16.7	0.15	K107N	289.027	321.716	118.559	3.052	0.07965	2.98111	4 X
K05T14G	15.8	0.15	K107N	238.869	238.634	212.169	9.510	0.04273	3.09899	4 X
K05T29U	15.0	0.15	K107N	324.929	148.558	219.364	14.849	0.07739	3.08238	5 X
K05T36T	16.1	0.15	K107N	350.163	322.586	44.040	7.216	0.06451	2.97825	7 X
K05T47O	17.1	0.15	K107N	334.091	165.001	215.634	5.310	0.22851	3.02604	4 X
K05T62K	16.1	0.15	K107N	8.435	259.153	82.453	2.372	0.11928	3.00916	4 X
K05T77A	14.8	0.15	K107N	291.570	198.511	232.905	26.665	0.13728	3.15503	4 X
K05T95B	15.5	0.15	K107N	200.905	280.541	228.461	8.706	0.04406	3.03806	5 X
K05TA2F	16.1	0.15	K107N	48.842	68.861	225.310	8.356	0.10686	3.02508	4 X

K05TA2H	16.1	0.15	K107N	350.254	340.904	3.693	6.424	0.19332	3.06355	2	X
K05TA2L	15.7	0.15	K107N	14.518	111.763	220.650	12.048	0.05451	3.04681	4	X
K05TA3T	15.1	0.15	K107N	269.794	184.147	240.814	8.038	0.08084	3.17174	3	X
K05TA4Y	15.5	0.15	K107N	315.317	146.369	241.558	8.359	0.20121	3.12019	4	X
K05TC8T	15.6	0.15	K107N	5.905	109.339	209.315	10.162	0.03689	3.21006	6	X
K05TC8U	16.4	0.15	K107N	327.658	153.712	207.532	8.814	0.13902	3.15453	2	X
K05TG1A	16.2	0.15	K107N	338.378	156.362	239.738	4.648	0.09720	2.91442	3	X
K05TG7L	16.0	0.15	K107N	189.669	309.184	214.825	12.180	0.13207	3.14959	3	X
K05TG9Y	15.2	0.15	K107N	27.222	94.720	224.241	12.083	0.04267	3.05074	5	X
K05TH2A	17.1	0.15	K107N	67.204	242.900	16.462	21.515	0.04564	1.88768	4	X
K05U04N	15.1	0.15	K107N	282.183	263.877	167.340	25.419	0.25622	3.17064	5	X
K05U08B	15.3	0.15	K107N	18.658	98.779	226.474	10.639	0.09709	3.07909	2	X
K05U08E	15.7	0.15	K107N	320.742	201.829	210.208	8.576	0.26426	3.02561	2	X
K05U14D	16.0	0.15	K107N	355.001	136.773	215.299	10.437	0.08500	3.06883	4	X
K05U14J	15.2	0.15	K107N	341.940	157.524	210.757	13.560	0.02050	3.09727	5	X
K05U20D	15.2	0.15	K107N	6.111	297.216	45.027	4.941	0.23536	3.07132	5	X
K05U24W	16.1	0.15	K107N	244.554	240.498	224.601	9.135	0.05396	3.16039	2	S
K05U25B	16.5	0.15	K107N	35.836	83.351	227.031	9.440	0.06783	3.09123	4	X
K05U49M	15.5	0.15	K107N	341.162	102.377	269.874	7.838	0.15934	3.02631	5	X
K05U63K	15.5	0.15	K107N	3.108	119.886	220.600	6.226	0.17676	3.12053	5	X
K05U68C	16.0	0.15	K107N	355.434	242.438	113.826	2.685	0.21133	3.00348	7	X
K05U70B	15.7	0.15	K107N	318.154	95.959	301.296	10.739	0.08684	3.03254	4	X
K05U71F	15.8	0.15	K107N	6.288	18.812	321.625	7.933	0.15159	3.00201	5	X
K05U72X	16.9	0.15	K107N	332.402	324.878	71.823	1.843	0.31132	3.00111	3	X
K05U75M	15.0	0.15	K107N	324.259	71.193	293.850	15.138	0.11145	3.15293	3	X
K05U85M	16.1	0.15	K107N	0.740	113.295	206.894	10.820	0.27683	3.09683	2	X
K05UA3W	16.6	0.15	K107N	25.064	223.631	97.624	2.539	0.16421	3.09564	3	X
K05UA7F	15.7	0.15	K107N	352.586	298.112	59.133	16.081	0.13843	3.10092	2	X
K05UA8A	15.5	0.15	K107N	86.753	49.538	213.537	9.985	0.13651	3.11790	4	X
K05UA8V	15.4	0.15	K107N	16.372	249.981	69.199	11.527	0.11318	3.05587	5	X
K05UB1L	15.8	0.15	K107N	6.432	303.974	44.564	17.060	0.33600	2.97576	2	X
K05UC7W	16.1	0.15	K107N	87.030	23.855	229.760	7.517	0.11290	3.19312	3	S
K05UG7J	16.0	0.15	K107N	295.497	36.065	33.279	10.425	0.07157	3.04086	3	X
K05UG9E	16.2	0.15	K107N	15.308	94.730	237.083	9.516	0.02397	3.16486	3	X
K05UH0A	15.5	0.15	K107N	310.438	14.783	37.540	10.863	0.06590	3.08529	5	X
K05UI1P	16.3	0.15	K107N	338.648	298.017	81.511	4.569	0.06255	3.14385	7	X
K05UJ0K	15.6	0.15	K107N	281.176	56.887	46.503	6.196	0.19345	3.05182	4	X
K05UJ4X	17.0	0.15	K107N	312.302	346.629	74.128	3.489	0.21173	3.05507	4	X
K05UJ7F	15.2	0.15	K107N	15.440	259.406	66.185	12.218	0.14635	3.16756	5	X
K05UL6B	15.4	0.15	K107N	18.073	124.013	203.202	9.270	0.13105	3.06365	7	X
K05UL6W	15.7	0.15	K107N	287.607	222.779	206.355	14.172	0.02532	3.07900	4	X
K05UO8G	16.3	0.15	K107N	32.218	223.789	87.246	2.331	0.13894	3.10480	5	X
K05UP0Q	15.9	0.15	K107N	345.471	36.212	331.384	12.239	0.11649	3.01105	5	X
K05US3X	16.7	0.15	K107N	309.973	325.424	96.858	3.479	0.11997	2.99727	3	X
K05UT2U	16.0	0.15	K107N	191.594	273.939	245.896	8.096	0.02471	3.18249	3	X
K05UV3P	15.6	0.15	K107N	297.157	345.989	86.973	12.696	0.21845	3.04359	5	X
K05UY1J	15.7	0.15	K107N	9.562	249.642	76.925	12.755	0.17121	3.10029	3	X
K05UY1S	16.1	0.15	K107N	47.979	88.295	212.182	8.422	0.13743	3.10651	2	X
K05UZ1Z	14.9	0.15	K107N	190.377	267.181	255.175	9.592	0.05547	3.12616	8	X
K05UZ2N	15.9	0.15	K107N	12.344	314.470	21.330	16.601	0.21094	2.98986	2	S
K05UZ4S	15.3	0.15	K107N	308.747	39.996	16.614	9.247	0.07567	3.09921	5	X
K05Ua0Y	16.0	0.15	K107N	272.442	67.286	38.433	9.169	0.15121	3.02113	5	X
K05Uc1Z	14.6	0.15	K107N	291.729	237.194	173.769	26.139	0.18995	3.18138	5	X
K05Uc4Z	15.8	0.15	K107N	353.397	313.900	48.003	6.245	0.11603	3.11801	4	X
K05Uf7O	16.4	0.15	K107N	322.063	291.963	111.596	3.667	0.08828	3.03254	6	X
K05Uh0R	16.7	0.15	K107N	2.955	101.862	240.895	7.604	0.09997	3.15690	3	X
K05Uh8F	15.2	0.15	K107N	341.818	133.233	251.492	4.592	0.19696	3.05074	4	X
K05Ui0K	15.7	0.15	K107N	219.114	153.707	17.402	13.553	0.07682	2.83510	7	X
K05Ui1K	15.3	0.15	K107N	31.033	325.400	359.930	9.498	0.09937	3.04982	4	X
K05Ui4M	15.3	0.15	K107N	15.303	79.185	248.845	8.494	0.12756	3.16338	4	X
K05Ui7J	15.0	0.15	K107N	9.147	77.098	246.922	14.063	0.16357	3.14592	5	X
K05Uj5Q	15.3	0.15	K107N	310.928	100.730	284.468	8.124	0.11237	3.13093	3	X
K05Uk7D	15.7	0.15	K107N	353.609	99.943	246.591	14.740	0.09589	3.18360	2	X
K05U16D	15.2	0.15	K107N	29.162	93.345	227.107	8.148	0.07446	3.03456	3	X
K05Um6L	16.0	0.15	K107N	339.412	104.642	273.718	4.663	0.11325	3.00985	3	X
K05Um8J	15.4	0.15	K107N	98.502	267.273	351.630	9.702	0.07104	2.97172	6	X
K05Up0U	16.5	0.15	K107N	340.652	274.597	109.073	2.734	0.11790	3.11904	4	X
K05V30J	15.6	0.15	K107N	2.688	264.435	74.074	10.839	0.23697	3.13723	5	X
K05V54G	16.3	0.15	K107N	2.061	136.442	209.343	9.337	0.17186	3.07618	3	X
K05V59E	16.2	0.15	K107N	355.601	337.070	23.795	8.747	0.14011	2.99742	4	X
K05V62U	16.7	0.15	K107N	124.091	276.086	330.902	2.941	0.04545	2.80667	4	X
K05V63N	16.1	0.15	K107N	235.069	26.217	119.583	2.441	0.22158	3.05218	4	X
K05V79N	14.9	0.15	K107N	349.984	83.220	292.812	11.620	0.20277	3.01094	3	X
K05V80U	15.2	0.15	K107N	310.592	321.976	84.033	14.520	0.12574	3.16867	5	X
K05V91W	15.8	0.15	K107N	0.322	145.331	225.025	9.455	0.11173	2.98430	3	X
K05V95C	15.7	0.15	K107N	339.384	179.558	224.485	9.090	0.07908	3.02321	5	X
K05VA7E	15.0	0.15	K107N	28.948	66.588	254.490	8.035	0.01862	3.17833	6	X
K05VB7Z	15.0	0.15	K107N	272.035	104.797	12.955	18.619	0.29700	3.23378	2	X
K05W01J	14.8	0.15	K107N	336.969	45.698	313.177	25.849	0.26689	3.16839	5	X
K05W04C	15.4	0.15	K107N	357.428	115.166	230.990	9.244	0.20923	3.10911	4	X
K05W04Q	15.0	0.15	K107N	291.609	108.527	304.295	15.371	0.19799	3.20006	2	X
K05W04R	15.7	0.15	K107N	351.457	71.952	299.424	11.405	0.31210	3.00384	2	X
K05W10Y	16.3	0.15	K107N	26.780	86.605	237.955	8.414	0.03203	3.17964	2	S
K05W12Z	16.0	0.15	K107N	4.833	277.674	69.102	1.677	0.19355	3.10705	3	X
K05W65C	17.4	0.15	K107N	352.743	45.366	290.468	16.005	0.05890	1.89057	4	X
K05W72M	15.0	0.15	K107N	313.642	164.174	253.999	16.231	0.11129	3.11095	2	X

K05WB4R	15.0	0.15	K107N	299.876	162.837	272.593	15.727	0.18898	3.08655	5 X
K05WC4O	15.4	0.15	K107N	308.565	227.688	213.690	10.634	0.15858	3.05404	4 X
K05WF0L	15.8	0.15	K107N	306.300	136.416	279.607	6.000	0.14250	3.17407	4 X
K05WF6F	16.1	0.15	K107N	313.039	225.072	203.808	10.595	0.21680	3.06907	5 X
K05WF6Q	16.1	0.15	K107N	26.539	254.826	51.259	12.896	0.16746	3.08457	5 X
K05WG3G	14.9	0.15	K107N	49.546	243.764	61.185	9.196	0.06750	3.23842	6 X
K05WI4D	15.3	0.15	K107N	303.129	218.879	222.702	9.389	0.11406	3.05139	4 X
K05X03S	15.6	0.15	K107N	322.855	152.025	256.829	16.492	0.24045	3.13132	5 X
K05X56Q	15.4	0.15	K107N	266.052	144.241	354.541	5.156	0.24101	3.09969	4 X
K05X92P	15.1	0.15	K107N	250.994	106.727	45.024	22.092	0.19583	3.05769	4 X
K05Y02W	15.0	0.15	K107N	293.759	113.242	337.574	13.035	0.25661	3.20481	4 X
K05Y08L	15.3	0.15	K107N	310.475	123.092	291.813	13.444	0.26056	3.11468	2 X
K05Y67D	16.5	0.15	K107N	332.128	112.225	296.706	13.148	0.32075	3.10921	2 X
K05Y94S	15.7	0.15	K107N	319.950	65.063	350.919	9.498	0.18681	3.03362	3 X
K05Y95R	15.1	0.15	K107N	352.135	236.266	121.588	13.829	0.09573	3.49270	3 X
K05Y95Y	15.1	0.15	K107N	356.203	66.229	305.593	18.442	0.04649	3.44325	3 X
K05YE1P	16.1	0.15	K107N	294.114	152.288	302.762	3.685	0.10473	3.23468	5 X
K05YL4R	16.8	0.15	K107N	66.609	304.768	334.748	18.786	0.02946	1.97564	4 X
K05YS8N	16.9	0.15	K107N	287.678	2.286	94.896	3.297	0.21452	3.08704	5 X
K06A84D	15.8	0.15	K107N	302.370	83.077	16.911	9.563	0.18333	3.13535	2 X
K06B06N	17.4	0.15	K107N	19.360	336.536	251.233	17.928	0.70725	2.54963	5 X
K06B39D	15.1	0.15	K107N	2.578	277.053	124.850	18.068	0.14642	3.12897	6 X
K06BR1Y	17.1	0.15	K107N	256.475	324.885	178.429	20.952	0.07740	1.90743	5 X
K06BR5L	17.0	0.15	K107N	16.217	277.981	14.148	5.216	0.20868	2.27595	5 X
K06C68F	15.1	0.15	K107N	342.881	129.442	255.904	3.782	0.08788	3.45630	6 X
K06DJ7J	16.9	0.15	K107N	71.563	304.925	288.338	6.533	0.15006	2.22884	4 X
K06E38Y	17.0	0.15	K107N	48.207	356.680	262.488	6.200	0.16824	2.23168	4 X
K06E44T	18.7	0.15	K107N	115.666	40.053	169.897	12.805	0.10123	1.49111	4 X
K06E45G	17.1	0.15	K107N	14.748	317.662	354.554	26.678	0.22109	2.13949	4 X
K06G46M	17.7	0.15	K107N	87.869	10.408	202.571	11.294	0.16657	2.28296	3 X
K06H39V	16.7	0.15	K107N	37.653	39.743	239.843	4.954	0.24601	2.28225	4 X
K06H56S	17.2	0.15	K107N	35.738	226.095	62.715	8.782	0.28965	2.29490	5 X
K06H70N	17.8	0.15	K107N	5.758	221.456	112.999	2.582	0.15206	2.14869	5 X
K06HA1V	17.8	0.15	K107N	33.090	165.793	135.637	3.473	0.18653	2.27209	6 X
K06J26B	17.3	0.15	K107N	39.975	298.740	345.878	3.666	0.27929	2.29609	5 X
K06J29W	17.8	0.15	K107N	81.406	67.779	184.455	5.222	0.08079	2.20042	5 X
K06K51M	17.7	0.15	K107N	19.957	186.021	124.868	3.144	0.23102	2.30661	4 X
K06KC1D	15.5	0.15	K107N	11.110	303.939	354.754	13.176	0.27282	2.47457	3 X
K06KC6O	17.0	0.15	K107N	70.951	139.465	132.987	6.911	0.08830	2.36879	5 X
K06Q21Y	17.5	0.15	K107N	334.054	38.770	354.293	13.133	0.33221	2.54721	2 X
K06Q22A	16.3	0.15	K107N	330.871	187.781	181.888	14.047	0.27474	2.64753	3 X
K06P02T	17.1	0.15	K107N	10.715	21.356	315.638	10.153	0.24666	2.39218	2 X
K06P06D	17.3	0.15	K107N	38.240	152.950	143.961	3.258	0.18231	2.39415	4 X
K06P07T	17.1	0.15	K107N	10.727	349.750	351.106	3.474	0.19586	2.38986	6 X
K06P08D	17.5	0.15	K107N	21.562	10.756	323.991	3.985	0.18454	2.36124	6 X
K06P29F	17.3	0.15	K107N	15.643	172.453	149.978	6.378	0.17324	2.39707	6 X
K06Q02G	17.1	0.15	K107N	23.658	354.992	332.586	1.666	0.22583	2.39353	4 X
K06Q03G	17.3	0.15	K107N	341.748	2.926	347.424	13.056	0.26498	2.56256	3 X
K06Q04S	18.2	0.15	K107N	326.381	304.971	87.351	2.595	0.18709	2.43840	5 X
K06Q06L	16.7	0.15	K107N	13.405	177.345	148.389	9.808	0.25818	2.44208	5 X
K06Q18F	16.8	0.15	K107N	28.407	282.183	31.289	7.525	0.10901	2.42255	5 X
K06Q18Y	16.9	0.15	K107N	81.063	273.680	1.302	4.915	0.11974	2.34916	6 X
K06Q34B	17.0	0.15	K107N	249.866	80.118	336.179	8.975	0.14184	2.72070	2 W
K06Q34V	16.8	0.15	K107N	24.225	251.976	58.135	2.957	0.17438	2.40907	6 X
K06Q42R	17.3	0.15	K107N	349.814	260.429	76.371	2.854	0.22462	2.53309	3 X
K06Q49R	17.7	0.15	K107N	350.290	125.785	249.883	4.104	0.24377	2.41598	2 X
K06Q52N	17.3	0.15	K107N	70.743	176.372	86.735	3.244	0.20363	2.39157	5 X
K06Q53O	16.8	0.15	K107N	36.231	220.950	78.252	6.960	0.18909	2.40541	6 X
K06Q60T	17.4	0.15	K107N	20.135	26.140	296.685	2.010	0.17265	2.40128	4 X
K06Q61H	16.3	0.15	K107N	338.856	184.838	185.429	4.687	0.27722	2.59279	7 X
K06QA0U	16.3	0.15	K107N	321.623	195.406	191.194	13.856	0.30203	2.60737	5 X
K06QB7J	17.0	0.15	K107N	38.864	42.288	264.643	1.823	0.20774	2.41488	5 X
K06QC0T	16.6	0.15	K107N	8.461	111.154	246.534	5.991	0.12791	2.37074	6 X
K06QC3L	15.8	0.15	K107N	312.066	186.161	213.996	13.305	0.25456	2.64910	5 X
K06QD4J	16.5	0.15	K107N	351.310	98.502	256.353	12.412	0.25641	2.48131	3 X
K06QI3N	17.1	0.15	K107N	1.161	248.952	90.564	2.353	0.23790	2.56921	6 X
K06R02R	15.6	0.15	K107N	46.872	276.174	1.951	12.867	0.28301	2.43023	3 X
K06R03N	17.4	0.15	K107N	348.143	139.713	190.591	8.596	0.24188	2.53728	4 X
K06R13S	17.2	0.15	K107N	200.674	305.370	230.030	7.628	0.14512	2.26892	6 X
K06R15Z	16.1	0.15	K107N	351.811	47.636	281.755	10.001	0.09465	2.59088	4 X
K06R16Y	16.2	0.15	K107N	282.958	122.767	293.694	10.982	0.15866	2.63814	4 X
K06R22C	15.8	0.15	K107N	340.292	331.834	36.055	16.362	0.16699	2.59599	3 X
K06R26C	16.9	0.15	K107N	120.783	9.036	175.876	13.823	0.09978	2.59115	3 X
K06R33N	17.3	0.15	K107N	340.726	5.165	347.443	13.559	0.22702	2.58123	2 X
K06R55K	16.8	0.15	K107N	256.922	85.582	24.104	5.541	0.13840	2.57331	4 X
K06R58C	17.2	0.15	K107N	295.205	233.379	179.199	13.589	0.28417	2.63350	3 X
K06R66T	16.4	0.15	K107N	54.790	269.509	13.530	12.900	0.15111	2.55047	3 X
K06R89U	17.5	0.15	K107N	7.657	323.765	352.131	3.178	0.24225	2.57845	2 X
K06R94S	16.1	0.15	K107N	148.336	2.862	204.315	13.904	0.22809	2.54158	4 X
K06S03F	17.1	0.15	K107N	23.344	342.745	350.831	5.904	0.11791	2.42663	5 X
K06S04X	17.7	0.15	K107N	346.502	83.878	276.958	3.160	0.26994	2.52162	3 X
K06S45R	17.7	0.15	K107N	351.558	338.446	18.486	8.869	0.12877	2.51478	3 X
K06S48O	16.4	0.15	K107N	302.388	224.999	201.976	12.905	0.24589	2.63350	4 X
K06S51B	16.6	0.15	K107N	241.260	255.336	197.725	12.389	0.14827	2.65589	5 X
K06S64Q	16.5	0.15	K107N	247.018	143.003	334.515	12.250	0.13249	2.60561	3 X
K06S65E	18.4	0.15	K107N	352.122	8.980	359.791	3.757	0.23254	2.46580	2 X

K06S71J	17.5	0.15	K107N	33.837	262.078	41.437	3.768	0.14371	2.57816	5 X
K06S71R	17.1	0.15	K107N	49.742	259.973	27.427	9.138	0.15130	2.57448	4 X
K06S75N	16.6	0.15	K107N	341.046	156.517	190.139	14.251	0.10593	2.68079	4 X
K06S82Z	16.6	0.15	K107N	111.195	210.490	22.844	7.323	0.13734	2.53777	7 X
K06SA0D	17.2	0.15	K107N	202.471	307.813	222.492	8.180	0.08792	2.30663	6 X
K06SA7N	17.0	0.15	K107N	148.204	215.338	10.042	7.261	0.05283	2.39938	5 X
K06SA8A	16.4	0.15	K107N	7.028	116.869	193.298	13.362	0.09389	2.63401	4 X
K06SB2B	16.3	0.15	K107N	328.562	262.815	118.813	14.649	0.13282	2.55014	6 X
K06SB3E	16.7	0.15	K107N	29.617	285.387	356.336	6.882	0.18249	2.57041	5 X
K06SB6V	17.6	0.15	K107N	341.204	352.406	21.920	4.790	0.19661	2.55111	3 X
K06SC1Q	16.2	0.15	K107N	334.560	36.876	342.684	5.528	0.29784	2.60983	4 X
K06SC2N	16.1	0.15	K107N	27.468	15.340	300.481	12.553	0.18560	2.55786	4 X
K06SI5H	17.8	0.15	K107N	316.075	94.181	337.999	3.459	0.21089	2.48718	3 X
K06SJ3B	16.3	0.15	K107N	122.108	206.981	20.342	13.564	0.09097	2.53849	2 S
K06SJ8B	16.3	0.15	K107N	315.192	83.746	307.145	15.617	0.22301	2.64153	3 X
K06SL8B	17.8	0.15	K107N	333.309	16.288	4.927	2.621	0.26362	2.58161	2 X
K06SM4C	16.8	0.15	K107N	358.220	309.413	31.387	4.917	0.29800	2.57175	4 X
K06SN5S	17.2	0.15	K107N	257.515	301.249	162.710	5.726	0.07024	2.42826	3 X
K06SP6E	16.4	0.15	K107N	340.458	115.813	215.278	5.626	0.04435	2.77026	4 X
K06SP7P	18.3	0.15	K107N	5.984	108.608	202.712	10.584	0.25736	2.61692	2 X
K06SS4J	16.6	0.15	K107N	323.651	93.738	271.906	6.028	0.10250	2.60111	7 X
K06ST8R	16.3	0.15	K107N	146.532	215.771	357.430	8.369	0.10609	2.54585	5 X
K06SU1S	17.1	0.15	K107N	326.410	223.467	165.428	13.592	0.31595	2.59803	2 W
K06SU3Y	16.3	0.15	K107N	201.315	98.091	57.226	2.811	0.03064	2.54272	5 X
K06SV3P	17.3	0.15	K107N	240.299	51.674	65.089	2.290	0.05288	2.56347	6 X
K06SV6U	17.9	0.15	K107N	291.052	34.744	41.825	4.995	0.16036	2.56076	4 X
K06SV9H	16.8	0.15	K107N	245.025	55.963	65.193	4.698	0.12953	2.57134	4 X
K06SZ4B	17.0	0.15	K107N	345.512	197.179	173.932	7.441	0.12679	2.54683	7 X
K06Sa1E	16.6	0.15	K107N	343.164	161.175	204.662	13.637	0.11024	2.63409	2 S
K06Sa9A	15.9	0.15	K107N	107.582	289.883	272.267	7.796	0.07770	2.76232	4 X
K06Sd1V	16.6	0.15	K107N	312.052	104.905	292.553	13.359	0.16460	2.61226	4 X
K06Se2A	15.9	0.15	K107N	98.629	42.012	210.821	13.367	0.07965	2.64608	8 X
K06Sf1P	16.5	0.15	K107N	355.032	81.845	255.697	13.801	0.16464	2.60132	3 X
K06T02W	17.6	0.15	K107N	313.718	252.210	167.916	7.283	0.25524	2.54568	4 X
K06T17O	17.7	0.15	K107N	325.713	333.215	66.433	2.890	0.18258	2.55259	3 X
K06T28Q	16.9	0.15	K107N	299.727	5.862	54.134	4.660	0.08507	2.61490	4 X
K06T36Y	16.6	0.15	K107N	104.398	18.559	226.481	7.011	0.15329	2.63789	5 X
K06T37H	17.0	0.15	K107N	333.477	149.473	240.261	1.867	0.10679	2.58721	4 X
K06T37K	16.7	0.15	K107N	1.300	115.554	221.963	13.726	0.15892	2.64937	4 X
K06T38P	16.6	0.15	K107N	260.100	77.695	34.972	4.504	0.13637	2.62549	3 X
K06T38V	16.9	0.15	K107N	6.506	290.347	43.713	4.084	0.23948	2.58869	5 X
K06T43M	17.0	0.15	K107N	32.316	264.810	47.910	3.715	0.13869	2.62794	5 X
K06T47W	16.5	0.15	K107N	353.224	310.918	39.231	15.308	0.07489	2.67643	4 X
K06T69Y	16.3	0.15	K107N	29.831	359.688	295.114	4.428	0.25588	2.56956	5 X
K06T70Z	17.3	0.15	K107N	340.532	231.807	145.281	4.960	0.17492	2.54264	5 X
K06T71B	17.0	0.15	K107N	353.997	340.191	11.455	12.321	0.18601	2.55971	2 X
K06T77Q	16.8	0.15	K107N	6.309	99.561	203.454	8.659	0.20525	2.74152	3 X
K06T81M	18.6	0.15	K107N	330.579	103.445	293.980	2.810	0.25330	2.55416	3 X
K06T83D	17.9	0.15	K107N	345.634	146.794	218.833	18.608	0.30598	2.55173	2 X
K06T85O	17.2	0.15	K107N	343.314	106.926	260.741	3.396	0.32453	2.56474	3 X
K06T91B	16.9	0.15	K107N	254.890	250.970	228.883	8.785	0.03943	2.58704	3 X
K06T95J	16.0	0.15	K107N	327.330	221.657	148.145	29.551	0.22909	2.62499	3 X
K06T99S	17.8	0.15	K107N	350.099	306.850	56.227	2.318	0.17245	2.54862	4 X
K06TA0H	17.0	0.15	K107N	237.574	212.550	293.660	2.466	0.11205	2.52607	4 X
K06TA3S	17.2	0.15	K107N	313.929	359.206	44.475	2.739	0.08631	2.61772	4 X
K06TC3W	17.3	0.15	K107N	13.373	247.355	79.125	2.708	0.21258	2.57999	2 S
K06TC9B	17.3	0.15	K107N	328.289	222.876	169.780	4.315	0.16063	2.59744	5 X
K06U02F	15.9	0.15	K107N	37.860	106.233	211.560	11.104	0.03619	2.64919	7 X
K06U08W	16.2	0.15	K107N	355.893	281.905	72.052	4.067	0.15616	2.61779	6 X
K06U09H	16.1	0.15	K107N	290.339	308.482	101.379	5.018	0.09893	2.78184	6 X
K06U09R	16.1	0.15	K107N	207.014	19.115	141.754	4.959	0.13687	2.70149	4 X
K06U12T	16.1	0.15	K107N	156.686	322.113	200.326	9.643	0.05404	2.90009	6 X
K06U13B	16.5	0.15	K107N	26.822	189.059	130.543	3.058	0.11837	2.61452	6 X
K06U17H	17.7	0.15	K107N	319.747	9.549	34.665	6.643	0.20072	2.57293	2 S
K06U18Z	17.9	0.15	K107N	37.270	80.618	226.637	6.772	0.13263	2.55518	3 X
K06U21V	17.7	0.15	K107N	18.507	14.555	300.729	1.065	0.18550	2.58969	4 X
K06U23G	17.7	0.15	K107N	269.303	225.055	240.246	4.000	0.13734	2.56116	5 X
K06U32T	16.8	0.15	K107N	326.390	343.841	34.065	2.860	0.22587	2.63691	5 X
K06U34S	18.2	0.15	K107N	322.933	10.813	38.703	5.152	0.27151	2.54941	3 X
K06U38D	17.5	0.15	K107N	351.584	307.131	38.698	12.182	0.20038	2.63690	3 X
K06U50M	17.6	0.15	K107N	33.107	342.975	351.995	6.201	0.08138	2.47827	6 X
K06U59S	15.7	0.15	K107N	304.824	156.958	244.386	12.806	0.24708	2.66993	2 X
K06U61E	16.8	0.15	K107N	33.996	300.116	9.636	4.546	0.28715	2.55115	2 X
K06U61J	16.7	0.15	K107N	85.545	315.131	322.118	2.736	0.06900	2.59956	4 X
K06U62Q	15.9	0.15	K107N	292.022	358.056	61.645	12.436	0.11829	2.70031	5 X
K06U72J	16.8	0.15	K107N	250.092	241.720	210.334	21.568	0.05710	2.67282	3 X
K06U80X	17.3	0.15	K107N	313.329	282.913	126.583	3.009	0.08150	2.59997	4 X
K06U82T	16.1	0.15	K107N	354.154	336.999	21.338	14.379	0.07112	2.60263	5 X
K06U84N	16.6	0.15	K107N	330.884	335.485	52.958	2.853	0.09955	2.63960	3 X
K06UA4H	17.2	0.15	K107N	324.186	324.079	72.397	4.523	0.15921	2.61577	3 X
K06UC4K	16.0	0.15	K107N	311.965	87.038	306.628	11.815	0.21104	2.63250	3 X
K06UC8K	16.4	0.15	K107N	346.140	114.380	221.020	7.767	0.15494	2.72484	4 X
K06UD9Z	15.6	0.15	K107N	224.125	113.384	28.381	12.574	0.12447	2.70646	4 X
K06UH9C	16.7	0.15	K107N	351.493	223.199	109.176	4.917	0.23295	2.65806	5 X
K06UH9L	16.9	0.15	K107N	272.417	243.943	190.018	12.561	0.20045	2.74672	3 X
K06UH9Q	16.7	0.15	K107N	315.942	263.327	141.636	5.318	0.13406	2.60487	7 X

K06UJ0A	15.7	0.15	K107N	302.838	107.560	270.513	8.144	0.02570	2.77434	7	X
K06UJ2L	17.3	0.15	K107N	337.076	72.084	301.869	5.733	0.21105	2.59551	2	X
K06UK3G	16.7	0.15	K107N	28.638	190.353	115.785	6.421	0.23499	2.54764	7	X
K06UN3K	16.9	0.15	K107N	334.497	212.278	153.949	3.066	0.22471	2.63987	4	X
K06UO1H	15.3	0.15	K107N	2.590	58.411	295.029	7.948	0.21095	2.56358	4	X
K06UP3H	16.8	0.15	K107N	92.679	41.621	219.844	10.112	0.18423	2.55449	3	X
K06UP4P	16.4	0.15	K107N	114.864	26.063	220.932	9.615	0.13635	2.58374	5	X
K06UP5T	16.7	0.15	K107N	356.299	124.333	232.035	5.118	0.31867	2.55926	4	X
K06UQ2X	16.3	0.15	K107N	353.111	184.312	175.568	14.596	0.19640	2.62888	5	X
K06UQ7U	16.6	0.15	K107N	337.158	43.564	352.096	5.528	0.23636	2.54347	4	X
K06UQ9K	16.9	0.15	K107N	16.221	106.965	231.339	2.586	0.09755	2.61471	5	X
K06UR2D	16.4	0.15	K107N	301.424	202.319	226.975	6.222	0.20878	2.65244	6	X
K06UR4B	16.4	0.15	K107N	336.333	110.082	248.803	7.584	0.15158	2.74495	5	X
K06UU2M	18.3	0.15	K107N	19.672	153.506	163.114	3.365	0.20013	2.46841	3	X
K06UX7R	15.8	0.15	K107N	340.838	258.559	105.366	12.277	0.09901	2.67952	6	X
K06UZ8X	16.1	0.15	K107N	83.162	235.705	24.279	11.611	0.14082	2.67367	4	X
K06Ua0S	15.7	0.15	K107N	207.750	239.523	253.066	13.749	0.04838	2.79181	5	X
K06V10Q	16.8	0.15	K107N	334.115	338.482	47.495	3.367	0.09356	2.62555	5	X
K06V20C	16.7	0.15	K107N	298.293	165.668	237.692	7.829	0.15954	2.75472	4	X
K06V25M	16.4	0.15	K107N	329.779	309.429	80.057	5.469	0.08158	2.65654	4	X
K06V28V	17.0	0.15	K107N	336.994	82.711	267.452	6.259	0.23831	2.76263	4	X
K06V31R	17.3	0.15	K107N	330.243	12.743	5.188	5.164	0.29954	2.63391	2	X
K06V50N	15.5	0.15	K107N	352.409	320.300	58.850	15.381	0.19759	2.58525	4	X
K06V56B	16.2	0.15	K107N	24.239	250.709	76.696	3.915	0.07979	2.68522	4	X
K06V62Q	16.4	0.15	K107N	352.203	118.430	247.271	4.739	0.12145	2.65946	5	X
K06V65T	16.5	0.15	K107N	358.257	277.606	67.519	5.770	0.28262	2.62545	5	X
K06V75C	16.0	0.15	K107N	359.385	136.468	233.672	3.310	0.16598	2.60413	4	X
K06V76Q	16.6	0.15	K107N	103.322	151.598	102.152	3.171	0.02801	2.68198	5	X
K06V83K	17.3	0.15	K107N	304.975	153.192	267.568	2.418	0.08396	2.63031	3	X
K06V84X	16.4	0.15	K107N	315.517	31.701	15.639	13.153	0.15278	2.63942	4	X
K06V88D	16.7	0.15	K107N	79.269	334.014	302.751	3.272	0.14741	2.60108	5	X
K06V92B	16.2	0.15	K107N	317.009	143.975	268.424	13.342	0.11613	2.55301	3	X
K06V92V	15.8	0.15	K107N	342.425	119.055	259.793	11.269	0.22935	2.63351	2	X
K06VA4T	16.7	0.15	K107N	327.912	245.925	128.901	4.716	0.21300	2.65233	5	X
K06VB1R	16.2	0.15	K107N	220.983	197.408	280.244	5.740	0.01775	2.86756	5	X
K06VC3F	16.2	0.15	K107N	293.434	105.814	346.528	2.690	0.09557	2.59251	7	X
K06VD3X	16.6	0.15	K107N	12.390	53.722	264.445	7.234	0.24212	2.73602	3	X
K06W01E	15.3	0.15	K107N	189.563	188.264	310.963	15.650	0.13829	2.92401	5	X
K06W05C	16.3	0.15	K107N	333.089	289.900	93.660	4.096	0.08299	2.67051	6	X
K06W10S	15.6	0.15	K107N	331.762	324.039	52.610	14.588	0.16424	2.72933	4	X
K06W11S	15.1	0.15	K107N	49.766	346.897	281.975	8.836	0.06213	2.99574	3	X
K06W13N	16.4	0.15	K107N	40.444	190.181	117.941	4.389	0.07976	2.78386	6	X
K06W16M	15.7	0.15	K107N	253.201	222.630	256.533	12.420	0.09153	2.67371	5	X
K06W26O	16.2	0.15	K107N	315.939	316.635	85.774	3.298	0.08312	2.67506	5	X
K06W32X	15.4	0.15	K107N	12.697	39.307	283.951	14.155	0.21286	2.60485	6	X
K06W39X	16.0	0.15	K107N	18.698	95.351	214.048	9.416	0.22958	2.77268	4	X
K06W51X	17.0	0.15	K107N	10.627	196.030	144.928	2.402	0.09796	2.70546	8	X
K06W53H	15.9	0.15	K107N	328.837	243.106	159.787	13.634	0.21984	2.59331	3	X
K06W60N	15.5	0.15	K107N	3.825	89.023	261.027	12.846	0.11177	2.70689	4	X
K06W61G	16.7	0.15	K107N	174.684	337.866	209.753	14.823	0.09851	2.66653	5	X
K06W61X	16.4	0.15	K107N	291.796	4.629	74.710	1.618	0.18748	2.62662	4	X
K06W64N	16.8	0.15	K107N	276.563	106.179	12.005	6.049	0.15879	2.57531	3	X
K06W95L	16.3	0.15	K107N	11.990	108.593	222.285	8.005	0.13513	2.69345	6	X
K06WA5J	15.4	0.15	K107N	66.894	4.129	242.147	7.653	0.03112	3.08789	7	X
K06WA5K	16.4	0.15	K107N	66.880	62.751	233.826	4.123	0.08223	2.67429	6	X
K06WB2Q	16.0	0.15	K107N	10.743	31.327	329.285	4.069	0.28167	2.56227	5	X
K06WC4E	16.8	0.15	K107N	104.167	44.759	202.596	14.737	0.08052	2.61255	5	X
K06WC4N	16.3	0.15	K107N	286.905	216.515	215.007	12.989	0.10138	2.71213	7	X
K06WC7F	16.1	0.15	K107N	332.414	259.464	128.317	4.273	0.05423	3.06295	5	X
K06WC7U	16.2	0.15	K107N	300.567	220.406	221.707	21.450	0.04510	2.59715	2	X
K06WC8O	17.0	0.15	K107N	332.485	116.341	250.009	6.293	0.31946	2.68404	3	X
K06WD0F	16.5	0.15	K107N	200.162	111.428	44.420	3.797	0.03471	2.78985	4	X
K06WG1K	16.7	0.15	K107N	19.596	244.816	67.579	10.128	0.17887	2.72742	3	X
K06X04C	16.4	0.15	K107N	338.244	88.314	280.835	9.931	0.32477	2.64046	3	X
K06X05T	16.9	0.15	K107N	335.678	268.626	129.683	5.128	0.22691	2.55595	3	X
K06X20E	15.0	0.15	K107N	254.401	158.407	286.217	10.585	0.18400	3.06458	4	X
K06X38A	16.7	0.15	K107N	292.488	154.832	286.813	5.486	0.24369	2.77630	2	X
K06X51E	15.8	0.15	K107N	353.096	63.112	281.631	15.382	0.05522	3.04456	3	X
K06X54T	16.1	0.15	K107N	318.772	338.647	65.345	9.881	0.28906	2.66910	4	X
K06X55C	15.8	0.15	K107N	316.299	142.336	289.283	11.437	0.26598	2.64827	5	X
K06X56Z	15.9	0.15	K107N	253.827	139.682	0.252	6.256	0.12249	2.58047	5	X
K06X66P	15.1	0.15	K107N	178.273	235.037	298.047	11.204	0.09400	3.21199	5	X
K06Y48K	15.5	0.15	K107N	0.313	32.189	308.045	8.882	0.14001	3.09805	2	S
K07A18J	16.6	0.15	K107N	308.524	304.628	139.090	11.657	0.26647	2.69828	5	X
K07A23G	15.6	0.15	K107N	314.173	126.863	275.255	6.348	0.05088	3.02018	4	X
K07B06Q	15.5	0.15	K107N	73.505	353.568	280.727	10.026	0.03503	3.11282	5	X
K07B08A	16.2	0.15	K107N	328.983	57.629	35.790	27.557	0.42027	2.58881	5	X
K07B09S	15.5	0.15	K107N	169.492	216.217	331.346	10.116	0.21112	3.21851	2	X
K07B09T	16.1	0.15	K107N	336.055	51.032	328.842	11.124	0.09103	3.05317	4	X
K07B15E	16.7	0.15	K107N	356.613	289.668	71.709	3.066	0.09925	3.04288	4	X
K07B25R	16.2	0.15	K107N	337.357	58.669	320.413	5.981	0.12281	2.98812	4	X
K07B26L	16.3	0.15	K107N	15.771	19.338	307.547	10.930	0.05905	3.19577	2	S
K07B49G	18.6	0.15	K107N	47.752	281.439	332.945	7.894	0.32083	1.84418	3	X
K07B68S	15.1	0.15	K107N	337.528	226.510	149.864	23.924	0.21694	3.11662	5	X
K07C07K	16.8	0.15	K107N	337.278	297.983	86.429	3.301	0.12286	2.89335	4	X
K07C13V	16.6	0.15	K107N	331.676	228.668	223.338	2.690	0.21893	2.56610	3	X

K07C16J	16.8	0.15	K107N	273.701	14.358	82.898	2.313	0.15095	2.86555	6	X
K07C22J	15.3	0.15	K107N	286.831	114.496	318.807	15.245	0.09137	3.07503	4	X
K07D02J	15.0	0.15	K107N	174.111	198.386	344.817	18.341	0.06169	3.26297	2	X
K07D05P	16.0	0.15	K107N	63.585	324.773	319.275	8.503	0.05377	3.17421	4	X
K07D12D	15.4	0.15	K107N	243.158	133.390	358.145	13.362	0.09769	3.00180	5	X
K07D12H	15.6	0.15	K107N	256.386	171.258	291.546	16.375	0.16495	3.12062	3	X
K07D93V	15.0	0.15	K107N	321.543	50.740	14.508	8.358	0.08547	3.02941	7	X
K07DB6Z	16.1	0.15	K107N	312.911	88.567	8.175	25.306	0.35898	2.66363	2	X
K07EC8U	17.0	0.15	K107N	260.310	136.874	349.422	2.692	0.07381	3.10010	5	X
K07EE0A	16.9	0.15	K107N	320.890	290.681	159.661	9.852	0.09468	2.68086	5	X
K07EG6Y	15.4	0.15	K107N	260.792	321.036	198.281	16.238	0.03840	3.09567	5	X
K07EI1M	14.5	0.15	K107N	354.986	346.762	22.013	12.323	0.11858	3.94564	4	X
K07F15W	15.8	0.15	K107N	276.610	134.268	338.191	4.895	0.09145	3.12726	6	X
K07J30U	17.9	0.15	K107N	43.396	61.153	227.119	19.663	0.04186	1.87162	3	X
K07O09O	16.3	0.15	K107N	33.297	129.624	176.830	23.055	0.06328	1.98657	4	X
K07S00J	16.6	0.15	K107N	279.277	174.942	306.920	8.191	0.53421	2.01542	5	X
K07S15X	17.4	0.15	K107N	80.868	93.578	173.684	22.320	0.06855	1.98199	4	X
K07T46E	17.0	0.15	K107N	337.354	331.496	15.763	7.235	0.15778	2.22737	7	X
K07T64B	17.7	0.15	K107N	17.250	90.165	202.139	5.576	0.18585	2.26351	5	X
K07T83Y	16.9	0.15	K107N	5.056	13.271	292.034	6.795	0.17598	2.19372	5	X
K07T84N	17.5	0.15	K107N	352.682	327.182	3.376	6.194	0.26594	2.17140	5	X
K07TF8G	18.0	0.15	K107N	348.815	97.308	231.238	5.062	0.22921	2.16570	3	X
K07TL2F	16.5	0.15	K107N	82.527	335.269	255.220	6.309	0.07464	2.32359	6	X
K07TL6O	17.0	0.15	K107N	224.648	244.354	228.621	6.937	0.19422	2.34595	4	X
K07TU9H	17.5	0.15	K107N	17.255	231.902	64.904	3.253	0.16975	2.19210	7	X
K07TX2J	18.1	0.15	K107N	278.334	180.814	262.337	2.115	0.07994	2.14166	4	X
K07Tf8X	17.0	0.15	K107N	20.920	43.956	250.649	5.788	0.12184	2.28732	4	X
K07U10S	16.6	0.15	K107N	287.663	175.785	225.279	6.568	0.09008	2.28188	5	X
K07U34T	17.6	0.15	K107N	285.933	151.886	256.132	6.893	0.13025	2.26082	4	X
K07U47A	17.2	0.15	K107N	342.108	249.792	93.319	3.961	0.18982	2.22168	5	X
K07U48L	18.0	0.15	K107N	272.485	10.552	78.447	3.166	0.09077	2.18996	4	X
K07UA5O	18.4	0.15	K107N	326.410	247.029	139.486	2.544	0.19038	2.17161	4	X
K07V30W	16.8	0.15	K107N	130.127	285.958	292.640	4.459	0.07261	2.16625	7	X
K07V35B	17.7	0.15	K107N	103.668	76.859	164.515	3.092	0.06958	2.27692	4	X
K07V61F	17.0	0.15	K107N	335.494	103.572	244.892	6.485	0.14520	2.28262	3	X
K07V79Z	17.2	0.15	K107N	105.760	191.445	48.087	3.531	0.09869	2.27313	6	X
K07V83M	17.1	0.15	K107N	205.632	225.444	281.116	5.225	0.06013	2.45133	5	X
K07V92C	17.1	0.15	K107N	14.346	280.277	10.263	7.601	0.27029	2.22517	5	X
K07V94E	17.3	0.15	K107N	240.761	213.339	260.600	4.495	0.07534	2.21480	5	X
K07VF7C	17.9	0.15	K107N	245.253	12.877	98.256	3.939	0.06401	2.20454	4	X
K07VJ7W	18.2	0.15	K107N	309.661	146.691	264.256	5.079	0.20427	2.28497	3	X
K07VN6X	17.7	0.15	K107N	109.472	174.201	55.656	3.599	0.14936	2.25299	4	X
K07VP3Z	15.3	0.15	K107N	231.694	217.781	282.328	23.156	0.30945	2.39974	4	X
K07VS1Y	18.0	0.15	K107N	322.406	145.189	243.941	4.461	0.14063	2.18840	4	X
K07VV6D	17.7	0.15	K107N	39.547	30.437	264.274	5.622	0.11139	2.29035	3	X
K07VV6O	17.9	0.15	K107N	307.460	143.904	283.635	3.351	0.03689	2.26684	5	X
K07VW1B	18.0	0.15	K107N	288.677	272.984	156.286	6.514	0.11033	2.19980	5	X
K07VX0J	17.6	0.15	K107N	329.927	353.664	16.400	2.777	0.23026	2.30251	4	X
K07W56F	16.9	0.15	K107N	294.612	139.751	268.945	6.934	0.23189	2.32936	3	X
K07X10X	18.0	0.15	K107N	332.770	90.812	276.000	1.765	0.18445	2.22716	2	W
K07X16O	17.6	0.15	K107N	271.127	169.771	288.001	2.314	0.11691	2.26556	5	X
K07X20Z	17.6	0.15	K107N	321.010	138.546	259.262	3.091	0.12232	2.20659	4	X
K07X22P	16.8	0.15	K107N	306.378	321.053	88.927	8.123	0.20197	2.25033	6	X
K07X24B	16.9	0.15	K107N	343.454	257.296	103.752	1.868	0.27874	2.18132	5	X
K07X33P	17.5	0.15	K107N	296.589	20.271	45.524	3.862	0.11694	2.21228	5	X
K07Y08B	17.2	0.15	K107N	162.669	267.653	301.247	1.674	0.14326	2.45905	5	X
K07Y29R	16.1	0.15	K107N	181.274	271.862	246.813	14.560	0.19240	2.78307	2	X
K07Y46T	16.4	0.15	K107N	238.058	233.725	244.906	5.519	0.05873	2.47039	4	X
K07Y50T	16.6	0.15	K107N	153.310	265.250	287.163	10.304	0.13772	2.59061	3	X
K07Y66S	17.3	0.15	K107N	356.721	240.759	116.699	8.381	0.18651	2.32202	5	X
K08A03G	17.0	0.15	K107N	231.929	83.654	53.373	4.236	0.15044	2.41084	5	X
K08A04J	17.6	0.15	K107N	295.459	300.950	133.521	2.544	0.19630	2.28943	4	X
K08A17C	17.1	0.15	K107N	211.736	240.707	278.996	3.045	0.14025	2.44022	4	X
K08A30A	16.6	0.15	K107N	338.615	292.795	61.296	2.887	0.22823	2.45025	7	X
K08A33B	16.7	0.15	K107N	345.407	255.607	113.707	7.319	0.11839	2.33450	5	X
K08A33X	17.2	0.15	K107N	246.481	12.165	114.418	3.058	0.16329	2.38406	6	X
K08A38Q	18.0	0.15	K107N	312.941	169.144	240.192	3.699	0.22700	2.26392	3	X
K08A42H	16.8	0.15	K107N	310.597	320.406	74.836	2.430	0.19008	2.44261	5	X
K08A43T	16.4	0.15	K107N	56.095	344.280	314.550	2.214	0.06390	2.59793	5	X
K08A99Q	16.4	0.15	K107N	304.242	96.228	286.338	10.113	0.08724	2.69129	3	X
K08AA0O	16.7	0.15	K107N	97.438	312.063	293.295	8.530	0.02948	2.68934	3	X
K08AD7V	15.6	0.15	K107N	60.474	313.415	340.110	15.029	0.12836	2.57906	4	X
K08B12N	17.1	0.15	K107N	215.326	145.786	10.403	7.197	0.03335	2.37818	4	X
K08B19G	16.2	0.15	K107N	60.650	320.103	314.836	11.635	0.08609	2.55949	4	X
K08B19L	16.8	0.15	K107N	143.383	281.164	281.488	4.570	0.11621	2.57012	4	X
K08B21G	17.3	0.15	K107N	275.999	131.952	324.156	2.940	0.03687	2.49319	6	X
K08B23O	16.0	0.15	K107N	208.817	171.972	346.730	7.380	0.09994	2.64142	6	X
K08B23P	16.3	0.15	K107N	206.374	176.151	345.369	6.797	0.11200	2.64188	5	X
K08B31J	17.8	0.15	K107N	243.838	172.466	320.493	3.643	0.06358	2.42998	5	X
K08B42W	16.4	0.15	K107N	309.117	78.911	316.515	21.616	0.06442	2.62270	2	X
K08B49A	17.1	0.15	K107N	110.646	87.161	157.420	3.753	0.03994	2.68642	6	X
K08C05F	17.2	0.15	K107N	178.984	268.639	273.176	2.776	0.06388	2.40676	6	X
K08C07F	17.0	0.15	K107N	230.912	4.481	125.484	3.744	0.04064	2.65069	5	X
K08C08J	16.7	0.15	K107N	20.326	171.449	160.015	6.084	0.04804	2.72150	5	X
K08C18J	16.2	0.15	K107N	101.541	105.257	144.515	4.417	0.07495	2.84582	4	X
K08C25H	17.2	0.15	K107N	251.102	130.593	347.460	6.389	0.06435	2.53842	4	X

K08C27W	17.1	0.15	K107N	180.799	211.880	345.838	6.747	0.07287	2.43893	6	X
K08C31X	17.2	0.15	K107N	239.862	347.252	130.373	3.311	0.01785	2.59232	6	X
K08C39F	17.7	0.15	K107N	310.161	285.053	131.696	6.053	0.19974	2.35036	3	X
K08C42A	17.2	0.15	K107N	336.834	93.592	279.693	5.065	0.03815	2.71841	6	X
K08C72D	15.6	0.15	K107N	219.003	166.831	337.697	9.080	0.13431	2.68422	3	X
K08C83U	16.9	0.15	K107N	243.346	150.119	350.786	5.992	0.07138	2.41317	5	X
K08CA7N	17.0	0.15	K107N	325.864	59.563	335.836	9.248	0.27347	2.35833	4	X
K08CA8K	17.2	0.15	K107N	254.845	215.909	266.516	4.032	0.17147	2.40828	5	X
K08CC1B	15.8	0.15	K107N	143.486	177.136	35.318	8.939	0.13522	2.77417	6	X
K08CC3K	16.8	0.15	K107N	159.329	228.994	319.325	11.512	0.07358	2.71456	4	X
K08CD5V	16.3	0.15	K107N	102.115	116.359	131.758	4.770	0.04848	2.77852	4	X
K08CF2G	16.5	0.15	K107N	79.140	33.494	232.538	3.734	0.16644	3.02852	6	X
K08CF3H	15.4	0.15	K107N	23.617	301.703	357.261	13.374	0.10947	3.21884	5	X
K08CF8B	16.4	0.15	K107N	347.195	196.963	167.887	12.241	0.08741	2.61686	6	X
K08CH5L	17.0	0.15	K107N	229.490	142.226	11.020	6.244	0.07172	2.33886	7	X
K08CI2M	17.5	0.15	K107N	292.517	51.338	27.434	6.125	0.20728	2.38097	5	X
K08CJ5C	15.6	0.15	K107N	37.830	314.802	356.206	21.150	0.27951	3.08236	4	X
K08CK5Q	18.5	0.15	K107N	311.651	93.058	340.427	3.885	0.20438	2.28760	6	X
K08CK9O	16.6	0.15	K107N	278.384	216.756	225.668	6.132	0.12352	2.47402	3	X
K08CL3F	15.2	0.15	K107N	234.841	245.425	205.269	9.339	0.05751	3.01978	8	X
K08D01M	17.8	0.15	K107N	332.794	95.567	304.803	1.678	0.13895	2.34761	4	X
K08D04E	16.7	0.15	K107N	122.108	250.753	336.000	11.625	0.03181	2.63267	5	X
K08D08K	17.1	0.15	K107N	355.565	333.111	15.479	3.298	0.10199	2.70590	4	X
K08D25U	16.1	0.15	K107N	239.043	170.202	310.727	6.442	0.08256	2.62100	4	X
K08D27B	16.0	0.15	K107N	356.359	59.212	297.293	4.471	0.05625	2.77185	5	X
K08D32U	16.8	0.15	K107N	144.827	169.554	40.892	3.921	0.05459	2.80318	5	X
K08D57T	15.2	0.15	K107N	245.188	164.894	269.715	9.781	0.02996	3.11876	5	X
K08D64F	18.3	0.15	K107N	292.499	308.651	130.620	3.352	0.17402	2.42495	4	X
K08D80R	16.5	0.15	K107N	215.739	89.948	55.202	4.476	0.03652	2.78584	6	X
K08D88F	17.6	0.15	K107N	291.057	43.948	34.217	6.924	0.19111	2.39292	2	S
K08E10X	16.6	0.15	K107N	170.658	188.852	15.991	9.813	0.13120	2.66414	5	X
K08E16J	16.0	0.15	K107N	355.552	8.246	8.255	17.337	0.22653	2.72995	3	X
K08E17H	16.0	0.15	K107N	41.891	50.507	256.900	6.510	0.05970	3.15134	7	X
K08E35Z	15.9	0.15	K107N	194.566	291.060	200.103	9.301	0.02782	3.02516	6	X
K08E49L	16.6	0.15	K107N	34.419	317.970	356.032	9.162	0.03996	3.01974	3	X
K08E69M	16.2	0.15	K107N	340.309	341.828	33.404	6.849	0.03798	2.70713	4	X
K08E77R	16.5	0.15	K107N	245.254	61.104	58.606	4.515	0.04724	2.78784	7	X
K08E90H	15.1	0.15	K107N	229.431	312.488	133.817	18.082	0.15021	3.20369	2	W
K08EB3E	16.5	0.15	K107N	82.154	52.536	220.696	5.421	0.10129	3.06030	8	X
K08EB6D	16.4	0.15	K107N	297.222	59.575	358.334	6.030	0.05740	2.81601	5	X
K08ED5D	16.8	0.15	K107N	288.431	319.284	112.547	3.194	0.02154	2.84646	6	X
K08EE0Y	16.9	0.15	K107N	241.010	176.229	307.869	3.226	0.03455	2.75288	2	S
K08EE9J	15.5	0.15	K107N	19.282	127.414	201.463	14.912	0.08447	3.09835	4	X
K08EE9K	16.2	0.15	K107N	261.071	205.987	259.822	3.286	0.01984	2.79822	5	X
K08EF0C	15.6	0.15	K107N	13.056	343.116	11.386	11.353	0.07541	2.74532	5	X
K08EF8Y	16.6	0.15	K107N	63.861	280.199	25.013	12.526	0.11723	2.97101	4	X
K08EG8O	16.2	0.15	K107N	144.759	355.476	202.607	22.632	0.13178	3.19289	3	X
K08F02K	15.7	0.15	K107N	355.066	26.918	341.077	13.888	0.20187	2.62313	3	X
K08F03W	16.5	0.15	K107N	15.802	341.726	0.833	13.723	0.04709	2.75233	6	X
K08F63N	15.8	0.15	K107N	137.179	39.599	177.797	16.162	0.15305	3.11423	5	X
K08F89N	16.3	0.15	K107N	348.030	5.937	7.036	10.975	0.13016	2.67849	4	X
K08FA2G	16.4	0.15	K107N	264.851	290.299	173.243	10.919	0.12067	2.89962	4	X
K08FB7Z	15.3	0.15	K107N	336.649	168.866	213.525	11.202	0.07158	3.20858	7	X
K08FB9E	15.9	0.15	K107N	60.863	253.806	36.192	10.633	0.07402	3.13067	3	X
K08FC3Y	15.5	0.15	K107N	131.495	37.336	188.704	27.635	0.14358	3.21646	4	X
K08FD0J	16.6	0.15	K107N	336.490	184.677	204.963	17.340	0.02320	3.10104	2	X
K08FD1M	17.4	0.15	K107N	210.973	164.416	349.315	5.928	0.06522	2.52952	5	X
K08FD3V	16.4	0.15	K107N	168.738	53.101	139.726	2.875	0.03448	2.93115	5	X
K08G07R	16.3	0.15	K107N	198.592	263.016	256.011	6.556	0.22503	2.79101	4	X
K08G24O	15.7	0.15	K107N	356.423	174.967	183.699	19.455	0.21984	3.12854	5	X
K08G45R	15.2	0.15	K107N	60.927	220.421	81.362	10.471	0.06832	3.16557	5	X
K08G60E	16.4	0.15	K107N	242.489	309.852	175.828	11.119	0.09171	2.76521	7	X
K08G83K	16.9	0.15	K107N	263.007	338.840	140.493	5.129	0.22488	2.54814	3	X
K08GC3J	16.1	0.15	K107N	67.368	315.780	330.405	3.981	0.10161	3.14608	6	X
K08GC3Y	16.9	0.15	K107N	166.369	281.974	286.096	3.220	0.04330	2.78642	4	X
K08GD3W	15.9	0.15	K107N	254.432	50.130	68.831	8.887	0.08879	3.00787	4	X
K08GE1D	16.1	0.15	K107N	63.605	81.387	222.368	8.636	0.08484	3.17013	5	X
K08H18O	16.1	0.15	K107N	78.070	292.310	342.945	8.455	0.06572	2.72557	6	X
K08H20G	15.6	0.15	K107N	56.119	271.845	29.387	10.441	0.06030	3.17379	2	X
K08H28A	16.2	0.15	K107N	63.219	296.996	8.876	5.112	0.06863	2.98794	5	X
K08H30E	16.5	0.15	K107N	275.149	143.733	311.242	1.123	0.02442	2.84690	8	X
K08H33V	15.6	0.15	K107N	127.888	16.675	230.879	16.732	0.15002	3.12173	4	X
K08J15K	16.0	0.15	K107N	333.338	29.429	19.075	15.369	0.10648	2.71403	3	X
K08RC2S	13.0	0.15	K107N	13.390	253.386	159.588	10.764	0.03297	5.21861	7	X
K08WC8Z	17.0	0.15	K107N	1.011	305.471	31.652	19.774	0.02089	1.99873	5	X
K08Y66L	17.0	0.15	K107N	221.519	155.629	308.950	17.774	0.10379	1.96607	3	X
K09A21C	17.2	0.15	K107N	89.067	264.565	330.200	10.693	0.25765	2.55694	3	X
K09B62M	17.1	0.15	K107N	194.218	176.985	319.151	20.341	0.08919	1.90770	4	X
K09C59D	16.4	0.15	K107N	105.870	16.371	179.871	14.075	0.18442	2.68706	5	X
K09D76G	16.8	0.15	K107N	64.552	50.059	129.567	5.801	0.10579	3.06067	4	X
K09D82J	17.1	0.15	K107N	62.786	98.199	141.507	6.393	0.07172	2.66438	4	W
K09D88R	16.3	0.15	K107N	61.689	131.194	80.702	4.077	0.05350	2.90459	4	W
K09D88Y	17.9	0.15	K107N	64.713	42.476	207.710	2.234	0.16203	2.34047	4	X
K09D92Y	17.2	0.15	K107N	232.671	284.612	131.303	6.857	0.13295	2.53777	4	X
K09D98Z	16.8	0.15	K107N	59.183	194.309	48.045	3.167	0.14735	2.64239	4	X
K09DB4U	17.3	0.15	K107N	46.555	276.553	313.152	10.884	0.13491	2.56442	3	X

K09DC40	17.6	0.15	K107N	31.242	210.385	89.741	2.409	0.18419	2.37835	4	X
K09DD9G	17.6	0.15	K107N	54.377	204.736	75.184	2.439	0.18053	2.35793	6	X
K09E22S	17.4	0.15	K107N	45.728	255.321	24.235	1.663	0.17202	2.41677	8	X
K09E29K	16.1	0.15	K107N	51.084	68.806	179.444	13.800	0.22220	3.21760	3	X
K09F04R	17.1	0.15	K107N	72.022	237.670	22.936	6.067	0.14812	2.41725	5	X
K09F06W	17.6	0.15	K107N	69.583	144.736	119.636	3.398	0.18186	2.36302	4	X
K09F26K	17.6	0.15	K107N	52.842	220.440	60.692	2.890	0.15511	2.31591	5	X
K09F26V	17.6	0.15	K107N	36.168	222.206	79.604	4.039	0.11804	2.26033	5	X
K09F27C	15.8	0.15	K107N	330.562	296.173	0.450	9.439	0.08312	3.08612	2	W
K09F44S	17.2	0.15	K107N	68.685	276.019	4.907	4.602	0.18282	2.20888	5	X
K09F71F	17.3	0.15	K107N	75.876	135.979	129.901	3.829	0.08824	2.38656	5	X
K09F71M	15.4	0.15	K107N	9.020	223.866	103.361	10.430	0.23303	3.08258	6	X
K09F72S	16.5	0.15	K107N	54.517	116.539	171.650	6.043	0.11790	2.57643	5	X
K09F73T	16.5	0.15	K107N	92.118	265.017	334.633	11.121	0.18679	2.53783	2	S
K09G05X	17.3	0.15	K107N	350.801	273.852	84.219	2.805	0.13580	2.39390	5	X
K09H17H	16.6	0.15	K107N	27.827	80.375	206.016	24.597	0.26131	3.20682	2	X
K09H36A	16.9	0.15	K107N	11.511	204.530	136.127	6.346	0.19041	2.23199	7	X
K09H37J	16.0	0.15	K107N	37.620	93.270	210.322	12.092	0.18205	2.65111	5	X
K09H48T	16.3	0.15	K107N	80.725	90.357	146.333	9.646	0.10632	2.81287	4	X
K09H50C	16.7	0.15	K107N	338.293	208.694	145.341	6.164	0.21739	2.40010	3	X
K09H69Q	15.8	0.15	K107N	73.138	25.878	207.353	7.570	0.08957	2.98374	4	X
K09H80Q	16.0	0.15	K107N	54.412	67.963	183.707	16.125	0.13170	3.01356	6	X
K09H89A	16.9	0.15	K107N	39.343	249.047	57.983	3.787	0.06151	2.62040	4	X
K09H90J	17.4	0.15	K107N	98.344	28.724	217.165	10.256	0.11970	2.35679	4	X
K09H99J	16.4	0.15	K107N	354.824	144.451	184.584	12.907	0.11950	3.10133	5	X
K09HA1O	15.9	0.15	K107N	57.058	27.279	233.734	11.303	0.28417	3.18045	2	X
K09HA5X	16.9	0.15	K107N	108.012	90.224	151.375	5.007	0.10335	2.53591	6	X
K09J00X	16.7	0.15	K107N	98.745	33.061	229.460	6.425	0.08338	2.33545	5	X
K09J13C	17.0	0.15	K107N	72.516	179.743	82.415	3.094	0.19541	2.69554	5	X
K09J13J	16.9	0.15	K107N	144.159	131.344	56.932	3.802	0.13898	2.59483	5	X
K09K13R	16.1	0.15	K107N	13.183	124.592	200.080	15.733	0.25490	3.11949	2	X
K09K17H	15.8	0.15	K107N	71.640	149.685	88.037	9.831	0.02390	3.18978	4	X
K09K28R	15.6	0.15	K107N	3.601	240.323	100.750	11.894	0.20319	3.11187	5	X
K09L01Z	16.1	0.15	K107N	239.057	261.294	188.386	14.292	0.08456	2.73367	3	X
K09Q19Y	15.7	0.15	K107N	22.545	223.434	157.046	15.624	0.11585	3.09356	2	S
K09R25S	16.4	0.15	K107N	155.228	229.361	58.312	5.196	0.04169	2.78379	2	W
K10H42Y	16.6	0.15	K107N	358.035	159.690	152.222	10.721	0.31758	3.05262	2	W
K10JA9P	15.9	0.15	K107N	338.351	69.118	272.581	8.514	0.07951	3.08884	4	X
K10JC9A	15.8	0.15	K107N	15.292	47.433	245.371	8.124	0.24252	2.97801	3	X
K10JD0K	16.3	0.15	K107N	17.523	289.807	359.622	8.126	0.25467	2.43830	5	X
K10K03V	16.4	0.15	K107N	38.686	357.580	262.157	11.766	0.23420	2.56697	7	X
K10K14W	15.8	0.15	K107N	74.860	319.690	266.291	8.339	0.15692	2.79872	3	X
K10K14X	15.3	0.15	K107N	8.444	31.163	278.949	8.820	0.06296	3.07862	3	X
K10K17N	15.9	0.15	K107N	6.694	9.333	299.657	7.510	0.29407	3.25071	3	X
K10K18V	15.5	0.15	K107N	327.445	54.147	323.621	12.453	0.28549	2.64119	6	X
K10K20U	17.2	0.15	K107N	29.149	81.795	187.592	11.494	0.27704	2.60803	2	X
K10K23F	15.3	0.15	K107N	355.528	49.096	282.483	8.966	0.29496	3.12861	2	X
K10K32B	17.4	0.15	K107N	352.708	55.550	283.384	10.436	0.29410	2.53536	3	X
K10K34W	16.0	0.15	K107N	329.985	149.499	209.847	15.528	0.12657	2.46563	2	X
K10K49R	16.1	0.15	K107N	343.038	59.530	299.609	11.558	0.30777	2.64889	4	X
K10K50S	15.2	0.15	K107N	324.315	151.276	218.778	10.410	0.13466	2.90907	3	X
K10K63G	15.7	0.15	K107N	349.957	192.263	148.469	16.608	0.20858	3.15061	5	X
K10K63J	15.3	0.15	K107N	345.491	62.259	281.194	8.677	0.10375	3.08029	2	X
K10K82W	16.9	0.15	K107N	19.625	163.656	129.769	4.213	0.25729	2.77088	2	X
K10K87X	15.5	0.15	K107N	310.606	73.912	316.664	26.834	0.14528	2.64849	4	X
K10K95S	15.8	0.15	K107N	319.520	250.588	129.299	6.015	0.12970	2.86489	5	X
K10K98H	15.1	0.15	K107N	23.653	48.698	249.506	11.899	0.13073	3.14379	4	X
K10L53O	17.0	0.15	K107N	357.310	353.940	342.998	5.655	0.11381	2.37272	2	X
K10L63Y	17.7	0.15	K107N	344.125	350.342	345.035	11.121	0.41317	1.90237	4	X
K10L95C	15.6	0.15	K107N	337.145	31.513	348.261	14.299	0.29089	3.15336	3	X
K10LA2X	17.5	0.15	K107N	343.342	195.985	167.559	9.609	0.23908	2.28478	4	X
K10LD5A	17.4	0.15	K107N	341.765	213.225	134.553	5.574	0.19059	2.27607	7	X
K10M17P	16.7	0.15	K107N	339.717	3.308	17.129	7.252	0.32728	2.64249	3	X
K10M84W	16.7	0.15	K107N	15.773	344.937	338.701	9.275	0.20777	2.80341	3	X
K10MB5E	14.8	0.15	K107N	4.717	291.446	55.584	3.709	0.24039	3.96261	2	X
K10N01Z	19.6	0.15	K107N	73.713	37.751	159.092	32.804	0.64627	1.37323	3	X
K10N32B	15.8	0.15	K107N	8.583	319.964	22.309	9.072	0.19314	3.15968	2	X
K10N34K	17.1	0.15	K107N	11.009	177.972	156.575	10.627	0.22616	2.77017	2	X
K10N87C	16.5	0.15	K107N	174.919	12.964	165.162	9.342	0.05380	2.52381	2	X
K10NB7P	16.9	0.15	K107N	2.216	160.800	155.192	13.485	0.29173	2.64391	2	X
K10O43V	15.9	0.15	K107N	10.709	25.656	309.972	11.736	0.31316	2.64071	2	S
K10O76G	15.7	0.15	K107N	274.370	161.630	191.234	35.966	0.16627	2.78932	2	X
K10P09S	17.7	0.15	K107N	0.010	86.294	219.131	4.553	0.26733	2.60377	2	X
K10P23X	17.4	0.15	K107N	330.398	218.523	149.122	7.311	0.24970	2.29026	4	X
K10P74R	17.9	0.15	K107N	8.270	148.770	150.398	6.173	0.32386	2.24402	3	X
K10P75M	16.5	0.15	K107N	327.382	214.312	157.217	9.811	0.16209	2.40084	2	X
K10R39P	16.4	0.15	K107N	332.810	53.002	331.756	11.032	0.31194	2.64345	2	X
K10R39X	16.4	0.15	K107N	30.214	46.342	248.265	6.586	0.17871	2.59133	2	W
K10R65D	16.2	0.15	K107N	341.713	118.124	231.825	6.311	0.14598	2.46102	2	X
K10R65R	16.5	0.15	K107N	343.244	47.589	299.491	9.748	0.20287	2.72550	2	X
K10R67E	17.0	0.15	K107N	325.237	334.218	57.267	7.101	0.12267	2.23199	2	W
K10R69W	16.8	0.15	K107N	295.058	303.271	127.584	3.471	0.14465	2.40916	2	X
K10R87K	18.1	0.15	K107N	328.889	54.646	328.173	5.666	0.17331	2.18288	2	X
T3S2138	17.2	0.15	K107N	353.601	141.221	219.581	5.608	0.20098	2.21404	4	X
T3S2336	17.0	0.15	K107N	6.211	17.736	334.065	3.157	0.22349	2.37318	8	X

New perturbed one-opposition orbits:

Object	H	G	Epoch	M	Peri.	Node	Incl.	e	a	Arc	C
K10H80Q	19.7	0.15	K107N	349.674	66.241	218.579	27.859	0.48915	1.56802	142	X
K10J13L	16.6	0.15	K107N	329.943	175.945	190.069	10.862	0.29203	2.84173	137	X
K10J96W	16.7	0.15	K107N	342.364	49.942	294.393	10.246	0.21105	2.60260	128	X
K10JA5E	15.9	0.15	K107N	350.667	149.212	185.970	11.992	0.27344	2.67356	127	X
K10K07Y	15.6	0.15	K107N	335.915	84.392	285.804	24.574	0.24100	3.16688	121	X
K10K52X	15.4	0.15	K107N	3.038	11.795	308.835	16.263	0.20069	3.16263	116	X
K10KA0L	15.6	0.15	K107N	319.670	78.642	315.462	14.644	0.25478	3.18468	111	X
K10L19X	16.0	0.15	K107N	357.646	78.146	259.265	13.867	0.16439	3.09466	105	X
K10L75N	16.5	0.15	K107N	351.429	87.147	265.374	11.395	0.31062	2.59413	98	X
K10L79V	16.4	0.15	K107N	359.491	353.585	342.076	14.102	0.26278	2.64475	98	X
K10LB2O	17.3	0.15	K107N	350.476	183.044	153.417	9.247	0.39637	2.66258	95	X
K10M22N	16.0	0.15	K107N	353.580	220.787	134.048	15.363	0.28144	3.15143	90	X
K10M56W	16.7	0.15	K107N	358.883	178.326	167.802	10.212	0.27829	2.77210	84	X
K10MB1C	15.7	0.15	K107N	355.972	179.976	177.812	18.324	0.16260	3.08006	77	X
K10N82N	16.5	0.15	K107N	308.852	48.568	15.143	15.520	0.18652	3.15161	77	X
K10O00C	19.1	0.15	K107N	351.604	28.329	325.093	12.806	0.63653	2.87462	57	W
K10O22E	21.3	0.15	K107N	7.456	79.610	176.288	14.350	0.62586	2.65183	61	X
K10OA1D	20.9	0.15	K107N	10.986	102.680	185.188	15.392	0.35797	1.61842	55	X
K10OA1F	19.6	0.15	K107N	125.326	282.567	212.416	23.375	0.32524	0.95104	55	X
K10OA1L	20.2	0.15	K107N	3.844	103.236	170.376	26.078	0.59513	2.61370	51	X
K10P02Q	24.5	0.15	K107N	355.010	2.906	312.216	1.950	0.48145	2.02776	43	X
K10P10M	19.7	0.15	K107N	340.484	59.263	311.673	1.505	0.46225	2.28246	41	X
K10P63J	15.7	0.15	K107N	328.812	72.458	305.872	13.759	0.32477	3.11608	89	X
K10Q02D	17.5	0.15	K107N	14.046	125.463	121.073	10.595	0.78399	2.01279	26	X
K10R00C	26.4	0.15	K107N	349.300	164.236	159.519	5.591	0.44508	1.84629	15	X
K10R00D	25.4	0.15	K107N	305.399	54.361	337.341	4.140	0.27313	1.41540	15	X
K10R00F	23.0	0.15	K107N	348.851	0.161	337.331	11.950	0.48348	2.27936	15	X
K10R04J	24.0	0.15	K107N	330.474	39.300	322.479	2.545	0.35403	1.63811	13	X
K10R12E	22.0	0.15	K107N	348.189	28.129	312.730	7.213	0.44307	2.29929	13	X
K10R30Q	18.2	0.15	K107N	213.930	7.783	137.531	4.927	0.47643	1.58392	13	X
K10R42K	18.6	0.15	K107N	339.974	294.816	113.384	4.485	0.57813	2.79603	11	X
K10R42M	18.3	0.15	K107N	9.163	274.273	15.197	38.873	0.54417	2.15988	11	X
K10R43J	23.2	0.15	K107N	47.557	236.669	319.680	6.894	0.49616	0.88436	10	X
K10R43L	24.3	0.15	K107N	357.999	0.679	291.019	0.629	0.62162	2.33591	10	X
K10R45X	25.4	0.15	K107N	349.357	164.810	167.225	10.991	0.52419	2.18209	7	X
K10R64P	27.2	0.15	K107N	348.916	159.922	169.942	6.375	0.52121	2.10383	5	X
K10R64Q	26.2	0.15	K107N	347.936	333.394	358.099	0.762	0.49988	2.04160	4	X
K10R80M	28.0	0.15	K107N	4.390	300.488	345.357	2.248	0.19321	1.15893	5	X
K10R80N	20.3	0.15	K107N	331.254	45.886	349.481	8.772	0.54141	2.25910	6	X
K10R80P	20.7	0.15	K107N	341.686	207.065	190.399	7.214	0.62341	3.07520	6	X
K10R80Q	22.7	0.15	K107N	337.972	186.320	196.119	6.389	0.51494	2.49048	6	X
K10R80R	22.4	0.15	K107N	18.348	292.169	352.216	13.458	0.15943	1.39370	5	X
K10R80T	22.6	0.15	K107N	344.232	347.105	355.757	7.618	0.44973	2.05392	5	X
K10R82O	16.9	0.15	K107N	306.660	66.214	21.621	18.040	0.60612	2.49167	6	X
K10R91A	23.4	0.15	K107N	252.296	272.617	183.806	5.594	0.34709	1.16421	3	X
K10RD0B	24.1	0.15	K107N	346.222	339.329	0.058	1.019	0.52230	2.15250	1	K
K10RD0C	21.6	0.15	K107N	337.780	199.140	187.786	9.192	0.58616	2.45655	1	X
K10RD0D	25.3	0.15	K107N	323.139	85.472	330.857	2.197	0.55360	1.98519	1	K
K10S00C	26.0	0.15	K107N	322.476	188.238	185.020	3.297	0.34180	1.55602	1	S
K10S00D	24.8	0.15	K107N	289.253	93.294	336.218	3.374	0.39610	1.36052	1	S
K10S00E	24.1	0.15	K107N	241.042	280.563	175.294	20.302	0.29004	1.04940	1	X

New one-opposition orbits:

Object	H	G	Epoch	M	Peri.	Node	Incl.	e	a	Arc	C
K09S80V	16.1	0.15	K0996	303.937	66.883	347.713	8.958	0.08944	3.09792	2DW	
K10H48L	18.4	0.15	K104E	342.277	115.910	82.299	22.912	0.37919	3.08901	5	S
K10L82J	16.7	0.15	K107N	336.929	245.792	128.787	13.256	0.24361	2.63761	97	S
K10L98Z	18.8	0.15	K107N	334.705	175.587	204.394	7.433	0.25632	2.65362	95	S
K10LA0N	16.4	0.15	K107N	339.546	239.809	128.642	14.488	0.18392	2.74177	95	S
K10LA0R	16.8	0.15	K107N	343.905	265.040	100.121	10.175	0.24565	2.74685	95	S
K10LD1S	17.8	0.15	K107N	343.722	115.715	247.390	5.855	0.17764	2.70585	92	S
K10M09W	17.7	0.15	K107N	343.874	136.881	230.416	6.805	0.24626	2.76309	91	S
K10M34C	17.7	0.15	K107N	352.065	25.325	332.641	9.915	0.23586	3.13339	87	S
K10M38F	17.3	0.15	K107N	329.055	179.336	204.992	10.124	0.13765	2.63707	86	S
K10M74O	16.7	0.15	K107N	336.850	82.769	295.888	7.330	0.09717	3.14719	82	S
K10M89J	18.2	0.15	K107N	7.397	6.671	325.249	4.330	0.24315	2.40992	81	S
K10M93Q	17.8	0.15	K107N	8.687	261.396	71.802	2.805	0.21970	2.63040	80	S
K10M97Z	16.1	0.15	K107N	295.929	84.098	342.910	15.798	0.08717	3.11898	79	S
K10MA0C	17.0	0.15	K107N	346.899	289.894	80.457	2.431	0.17429	3.09564	79	S
K10MA3F	17.9	0.15	K107N	19.568	166.977	151.668	2.449	0.20478	2.64195	79	S
K10MA4G	16.4	0.15	K107N	354.598	29.083	330.982	9.616	0.08474	3.16859	78	X
K10MA5X	16.3	0.15	K107N	15.459	205.395	125.898	3.141	0.15894	3.17461	78	S
K10MA7T	16.1	0.15	K108C	353.288	173.861	195.110	7.938	0.30787	2.66737	36	X
K10N17M	17.6	0.15	K107N	359.307	199.017	155.745	5.039	0.08333	2.76415	72	S
K10N24P	16.5	0.15	K108C	354.875	268.369	99.027	2.204	0.16072	3.14138	71	S
K10N45B	17.3	0.15	K108C	18.643	116.520	211.706	11.781	0.25367	3.05583	69	S
K10N57S	16.3	0.15	K108C	351.156	195.311	179.646	17.258	0.10681	3.17973	68	S
K10N58G	16.4	0.15	K108C	344.975	50.259	335.493	12.915	0.24235	2.58103	67	W
K10N63F	17.1	0.15	K108C	282.985	332.505	126.648	2.962	0.16218	2.68075	67	S
K10N65B	15.8	0.15	K108C	3.380	173.819	186.842	23.990	0.06056	3.14138	67	S
K10N86G	16.7	0.15	K107N	37.533	109.662	176.356	21.206	0.29431	3.01365	77	S
K10O05Y	15.5	0.15	K108C	343.334	94.681	296.356	15.534	0.15630	3.08521	62	S
K10O30G	16.1	0.15	K108C	16.881	3.899	323.896	6.673	0.34676	2.64051	57	W
K10O98H	16.1	0.15	K108C	355.852	190.670	188.742	14.390	0.15107	2.57740	50	X

K100A1K	17.1	0.15	K108C	20.468	343.314	308.964	10.682	0.25783	2.45074	58 S
K10P10A	17.3	0.15	K108C	21.445	344.694	320.476	16.805	0.08509	1.95030	43 X
K10P23V	16.5	0.15	K108C	358.403	15.098	314.753	14.577	0.26544	2.67467	62 S
K10P23W	17.7	0.15	K108C	14.273	3.291	299.114	7.750	0.22886	2.19469	61 S
K10P57R	18.6	0.15	K108C	355.458	9.407	325.529	11.999	0.43070	2.67771	40 S
K10P62Z	17.9	0.15	K107N	348.596	174.068	195.090	7.936	0.30577	2.65742	72 X
K10P63H	17.9	0.15	K108C	340.322	85.066	271.438	6.499	0.26428	2.43329	34 S
K10P76G	17.5	0.15	K108C	356.969	193.721	142.050	3.140	0.18952	2.36437	32DW
K10P76X	16.8	0.15	K108C	346.814	201.953	156.406	7.081	0.32645	2.69905	36DX
K10P80G	17.3	0.15	K108C	290.073	260.890	169.097	3.811	0.14452	2.27712	29 S
K10Q03L	16.2	0.15	K108C	351.247	191.297	157.605	16.805	0.25140	3.05745	27DW
K10Q04V	16.6	0.15	K1091	343.126	66.292	300.799	8.951	0.23137	2.64594	16 X
K10Q06P	17.3	0.15	K1091	20.621	156.854	146.128	17.056	0.23073	2.75411	29 S
K10R03N	17.0	0.15	K1091	53.164	304.365	350.400	20.686	0.07729	1.94790	15 X
K10R20F	16.3	0.15	K1091	2.212	70.783	255.236	7.667	0.23810	3.04393	13 S
K10R20J	15.9	0.15	K1091	328.205	98.244	284.016	7.989	0.15352	2.83736	14 X
K10R22J	17.4	0.15	K1091	10.748	42.049	276.301	6.361	0.22733	2.44140	13 X
K10R26S	16.1	0.15	K1091	359.626	58.505	286.815	10.794	0.30840	2.64068	13 S
K10R31L	17.2	0.15	K1091	41.925	275.453	17.471	14.058	0.13525	2.68538	15 X
K10R37X	16.5	0.15	K1091	350.236	204.688	173.958	18.656	0.32132	3.05843	11 S
K10R39K	18.4	0.15	K1091	337.068	13.594	13.072	2.740	0.19190	2.46909	11 X
K10R40O	18.7	0.15	K1091	353.908	131.155	233.160	8.956	0.29828	2.72035	13 S
K10R44D	17.2	0.15	K1091	312.094	38.853	30.631	5.835	0.20416	2.80089	12 S
K10R44F	18.3	0.15	K1091	355.829	69.707	282.785	11.638	0.23542	2.60764	10 S
K10R44L	17.1	0.15	K1091	301.635	246.241	178.104	6.888	0.10827	2.40976	10 H
K10R52Q	17.6	0.15	K1091	310.629	202.219	198.863	20.888	0.10360	1.92742	11 S
K10R52U	17.6	0.15	K1091	13.297	134.233	198.099	2.336	0.24075	2.19343	10DW
K10R53K	27.9	0.15	K1091	20.933	310.894	346.155	6.049	0.31063	1.34184	5ES
K10R65J	17.0	0.15	K1091	347.385	84.330	273.639	7.781	0.21933	2.65836	13 X
K10R68S	18.3	0.15	K1091	0.496	11.738	344.051	7.185	0.37068	2.62804	10 S
K10R68Z	16.9	0.15	K1091	51.126	28.167	251.659	5.719	0.20726	2.43659	10 S
K10R69S	17.3	0.15	K1091	357.415	191.112	172.870	17.579	0.29172	3.12954	9 S
K10R75C	18.3	0.15	K1091	8.753	171.570	166.025	3.464	0.20518	2.39607	10 X
K10R75U	15.3	0.15	K1091	321.054	149.178	246.711	9.424	0.21001	3.37148	6 S
K10R78E	17.9	0.15	K1091	8.196	305.168	39.713	3.768	0.21677	2.35277	5 S
K10R80U	19.3	0.15	K1091	339.906	28.923	339.336	40.070	0.25295	1.81709	4 S
K10R80Y	18.3	0.15	K1091	356.824	13.547	341.741	4.697	0.16229	2.43527	6 X
K10R81H	17.9	0.15	K1091	341.804	20.779	356.560	5.415	0.27271	2.60544	12DW
K10R83Q	17.6	0.15	K1091	304.460	243.694	165.257	4.693	0.07267	2.74268	15 S
K10R86B	18.0	0.15	K1091	25.522	260.560	56.594	2.982	0.07404	2.41478	14 S
K10R88C	19.5	0.15	K1091	343.713	232.392	140.602	4.502	0.26026	2.37699	13 S
K10R90J	17.6	0.15	K1091	338.067	243.905	142.803	0.792	0.23182	2.43920	5 X
K10R90T	19.9	0.15	K1091	341.437	53.215	343.211	5.083	0.37987	2.37428	6 S
K10R92B	17.6	0.15	K1091	49.766	348.059	295.698	5.774	0.11526	2.51647	5 X
K10R93A	18.4	0.15	K1091	30.110	53.772	248.398	4.268	0.16715	2.37899	4 X
K10R96U	17.6	0.15	K1091	34.496	121.903	189.253	23.195	0.09836	1.90255	7 W
K10R97G	18.7	0.15	K1091	16.101	149.742	172.467	0.773	0.26223	2.26847	7 X
K10RA0Y	17.0	0.15	K1091	26.137	4.824	321.834	4.069	0.20302	3.16117	6 S
K10RA8F	17.9	0.15	K1091	3.630	110.539	241.881	5.308	0.17271	2.63960	6 S
K10RA9J	17.5	0.15	K1091	342.644	309.255	59.918	6.666	0.12363	2.63663	5 S
K10RA9M	16.6	0.15	K1091	302.384	269.016	199.303	3.085	0.44702	2.87828	5ES
K10RB0A	16.8	0.15	K1091	321.506	198.248	207.033	0.834	0.14202	2.57582	3 X
K10RB0B	19.1	0.15	K1091	20.324	310.634	358.370	1.377	0.32344	2.23936	3 X
K10RB0D	17.4	0.15	K1091	294.754	209.273	229.547	6.033	0.13753	2.35740	2 S
K10RB3R	15.9	0.15	K1091	293.244	233.616	222.065	9.571	0.17129	3.17006	5 S
K10RB9X	16.5	0.15	K1091	10.554	138.762	210.074	12.165	0.07621	3.08777	2 S
K10RC1O	17.5	0.15	K1091	294.641	167.786	255.392	5.449	0.04279	2.36242	4 S
K10RC1P	18.7	0.15	K1091	45.529	3.624	285.386	5.324	0.18303	2.28883	4 S
K10RC1T	17.4	0.15	K1091	324.299	156.494	203.770	5.790	0.05786	2.38454	2 S
K10RC1V	18.2	0.15	K1091	29.116	100.193	181.034	8.210	0.18103	2.22724	2 S
K10RC2P	19.1	0.15	K1091	15.701	339.568	345.842	2.552	0.22165	2.12177	7 X
K10RC2R	16.8	0.15	K1091	54.125	329.469	292.938	5.775	0.33937	2.67512	6 S
K10RC2Y	16.6	0.15	K1091	324.941	46.582	355.219	7.007	0.13125	3.01929	2 W
K10RC2Z	19.0	0.15	K1091	342.150	149.080	248.034	3.561	0.41342	2.69996	2 S
K10RC3A	18.1	0.15	K1091	314.870	221.066	184.499	29.516	0.17878	2.03792	3 X
K10RC3B	20.7	0.15	K1091	82.379	62.642	188.989	18.431	0.06878	1.57765	1EX
K10RD0A	20.3	0.15	K1091	355.450	84.898	267.461	13.144	0.41514	2.55861	25 K
K10S00A	20.5	0.15	K1091	345.191	192.083	179.101	40.547	0.34864	2.13797	1 S
K10S00B	21.9	0.15	K1091	3.577	114.164	206.594	7.504	0.59348	2.89535	1EX
K10S00F	25.6	0.15	K1091	158.360	184.004	351.194	9.365	0.21910	0.83769	0ES

New observations:

J97G03L	KC2010	09	15.29145	00	20	18.93	+36	20	17.8	15.4	R	ES010H47
J97G03L	KC2010	09	15.29249	00	20	19.20	+36	20	33.6	15.5	R	ES010H47
J97G03L	KC2010	09	15.29354	00	20	19.47	+36	20	48.9	15.4	R	ES010H47
J97G03L	C2010	09	16.62164	00	29	04.18	+43	03	52.5	14.9	V	ES010379
J97G03L	C2010	09	16.62998	00	29	08.12	+43	06	57.3	15.1	V	ES010379
J97G03L	C2010	09	16.63183	00	29	09.01	+43	07	38.6	15.0	V	ES010379
J97G03L	C2010	09	16.64664	00	29	16.12	+43	13	07.4	14.8	V	ES010379
J97G03L	C2010	09	16.64850	00	29	17.00	+43	13	48.9	14.7	V	ES010379
J97G03L	C2010	09	16.65035	00	29	17.86	+43	14	30.1	14.4	V	ES010379
J97G03L	C2010	09	16.65682	00	29	21.00	+43	16	54.3	14.7	V	ES010379
J97G03L	C2010	09	16.65867	00	29	21.87	+43	17	36.0	14.7	V	ES010379
J97G03L	C2010	09	16.66331	00	29	24.11	+43	19	19.3	14.8	V	ES010379
J97G03L	C2010	09	16.66516	00	29	24.99	+43	20	00.7	14.9	V	ES010379
J97G28H	C2010	09	13.06507	01	04	16.90	+09	12	52.6	19.6	V	ES010193

J97G28H	C2010	09	13.07031	01	04	16.65	+09	12	53.7	19.8	V	ES010I93
J97G28H	C2010	09	13.07556	01	04	16.42	+09	12	54.6	19.5	V	ES010I93
J99T05B	C2010	09	16.29484	23	41	38.53	+27	41	22.4	19.8		ES010704
J99T05B	C2010	09	16.30736	23	41	37.98	+27	40	59.0	19.8		ES010704
J99T05B	C2010	09	16.32022	23	41	37.49	+27	40	34.8	20.0		ES010704
J99T05B	C2010	09	16.33255	23	41	37.01	+27	40	11.7	20.1		ES010704
K01X00D	HC2010	09	16.48715	07	03	48.55	+22	06	27.7	21.4	V	ES010691
K01X00D	HC2010	09	16.49988	07	03	49.25	+22	06	30.4			ES010691
K02E02Y	KC2010	09	04.09090	05	41	14.65	+37	41	57.7			ES010160
K02E02Y	KC2010	09	04.09363	05	41	17.19	+37	42	28.7	18.6	R	ES010160
K02E02Y	KC2010	09	04.09636	05	41	19.89	+37	43	00.6			ES010160
K03F05C	C2010	09	16.24865	21	40	08.14	-07	21	44.2	19.4	V	ES010703
K03F05C	C2010	09	16.25605	21	40	07.32	-07	21	51.8	19.5	V	ES010703
K03F05C	C2010	09	16.26354	21	40	06.49	-07	21	57.6	19.6	V	ES010703
K03F05C	C2010	09	16.27103	21	40	05.70	-07	22	04.5	19.7	V	ES010703
K03M04J	KC2010	09	04.04798	05	13	15.75	+01	59	36.7	18.5	R	ES010160
K03M04J	KC2010	09	04.05072	05	13	16.21	+01	59	41.7	18.2	R	ES010160
K03M04J	KC2010	09	04.05346	05	13	16.81	+01	59	45.2	18.8	R	ES010160
K05G59E	KC2010	09	03.94568	01	54	15.32	+31	03	58.1	18.0	R	ES010160
K05G59E	KC2010	09	03.94811	01	54	16.06	+31	03	59.7	17.8	R	ES010160
K05G59E	KC2010	09	03.95054	01	54	16.81	+31	04	01.3	17.9	R	ES010160
K05G59E	C2010	09	16.36277	03	22	32.54	+31	24	13.8	16.9		ES010704
K05G59E	C2010	09	16.37524	03	22	39.57	+31	24	04.1	17.3		ES010704
K05G59E	C2010	09	16.38730	03	22	46.34	+31	23	54.7	17.3		ES010704
K05G59E	C2010	09	16.39938	03	22	53.13	+31	23	44.9	17.4		ES010704
K05G59E	C2010	09	16.41148	03	22	59.89	+31	23	34.0	17.6		ES010704
K05G59E	C2010	09	16.71515	03	25	55.86	+31	19	09.0	17.7	V	ES010379
K05G59E	C2010	09	16.72163	03	25	59.57	+31	19	03.6	17.5	V	ES010379
K05G59E	C2010	09	16.72348	03	26	00.60	+31	19	02.1	17.0	V	ES010379
K05G59E	C2010	09	16.72998	03	26	04.36	+31	18	56.0	17.2	V	ES010379
K05G59E	C2010	09	16.73183	03	26	05.38	+31	18	54.5	17.5	V	ES010379
K05G59E	C2010	09	16.74015	03	26	10.16	+31	18	46.9	17.5	V	ES010379
K05G59E	C2010	09	16.74664	03	26	13.82	+31	18	41.6	17.5	V	ES010379
K06B06N	C2010	09	16.22858	21	57	59.37	+24	41	32.8	19.5		ES010704
K06B06N	C2010	09	16.25353	21	57	58.02	+24	41	02.4	19.7		ES010704
K06B06N	C2010	09	16.26593	21	57	57.36	+24	40	45.8	19.8		ES010704
K06B06N	C2010	09	16.27825	21	57	56.69	+24	40	30.1	20.1		ES010704
K07B49G	C2010	09	16.18606	00	24	31.52	+11	25	17.7	20.1	V	ES010691
K07B49G	C2010	09	16.20675	00	24	29.65	+11	25	14.5	20.3	V	ES010691
K07B49G	C2010	09	16.22448	00	24	27.98	+11	25	11.8	20.3	V	ES010691
K07S00J	C2010	09	16.32278	23	45	28.94	+11	48	08.3	18.5	V	ES010G96
K07S00J	C2010	09	16.32978	23	45	28.29	+11	48	07.0	18.6	V	ES010G96
K07S00J	C2010	09	16.33674	23	45	27.64	+11	48	05.7	18.5	V	ES010G96
K07S00J	C2010	09	16.34362	23	45	27.03	+11	48	04.4	18.6	V	ES010G96
K10H80Q	JC2010	09	14.15148	15	27	35.67	+37	36	11.9	21.5		ES010695
K10H80Q	JC2010	09	14.15384	15	27	36.58	+37	36	15.0	21.5		ES010695
K10H80Q	JC2010	09	14.15580	15	27	37.22	+37	36	16.9	20.9		ES010695
K10L63Y	C2010	09	16.46568	20	56	29.40	-12	14	02.6	15.2	V	ES010379
K10L63Y	C2010	09	16.46756	20	56	29.75	-12	13	51.4	15.1	V	ES010379
K10L63Y	C2010	09	16.47583	20	56	31.21	-12	13	02.7	15.1	V	ES010379
K10L63Y	C2010	09	16.47769	20	56	31.52	-12	12	51.8	15.2	V	ES010379
K10L63Y	C2010	09	16.47955	20	56	31.84	-12	12	40.9	15.1	V	ES010379
K10L63Y	C2010	09	16.49383	20	56	34.34	-12	11	16.6	15.1	V	ES010379
K10L63Y	C2010	09	16.49569	20	56	34.67	-12	11	05.4	15.2	V	ES010379
K10L63Y	C2010	09	16.49961	20	56	35.37	-12	10	42.2	15.3	V	ES010379
K10L63Y	C2010	09	16.50147	20	56	35.68	-12	10	31.0	15.2	V	ES010379
K10L63Y	C2010	09	16.50333	20	56	36.03	-12	10	20.3	15.2	V	ES010379
K10L63Y	C2010	09	16.51189	20	56	37.52	-12	09	29.7	15.1	V	ES010379
K10N01Z	tC2010	09	16.30660	23	55	33.62	-18	44	05.8	21.8	V	ES010291
K10N01Z	tC2010	09	16.31055	23	55	33.13	-18	44	11.4	21.3	V	ES010291
K10N01Z	tC2010	09	16.31455	23	55	32.64	-18	44	17.2	21.6	V	ES010291
K10000C	S2010	09	10.90617	04	51	19.92	+51	23	14.8			ES010C51
K10000C	s2010	09	10.90617	1	+	293.7580	+	4323.1504	+	5372.2016		ES010C51
K10000C	S2010	09	11.03835	04	51	58.02	+51	26	42.9			ES010C51
K10000C	s2010	09	11.03835	1	+	266.5852	+	4273.0519	+	5413.5573		ES010C51
K10000C	S2010	09	11.30295	04	53	13.67	+51	33	34.3			ES010C51
K10000C	s2010	09	11.30295	1	+	254.8934	+	4298.2332	+	5394.2130		ES010C51
K10000C	S2010	09	11.43513	04	53	51.37	+51	36	57.2			ES010C51
K10000C	s2010	09	11.43513	1	+	228.5235	+	4247.8339	+	5434.9290		ES010C51
K10000C	S2010	09	11.43526	04	53	51.45	+51	36	57.8			ES010C51
K10000C	s2010	09	11.43526	1	+	249.5286	+	4310.8871	+	5384.2394		ES010C51
K10000C	S2010	09	11.56743	04	54	28.96	+51	40	18.7			ES010C51
K10000C	s2010	09	11.56743	1	+	222.5252	+	4259.3051	+	5426.3722		ES010C51
K10000C	S2010	09	11.89813	04	56	02.39	+51	48	34.7			ES010C51
K10000C	s2010	09	11.89813	1	+	198.1682	+	4260.2121	+	5426.2764		ES010C51
K10000C	S2010	09	11.96422	04	56	20.88	+51	50	12.7			ES010C51
K10000C	s2010	09	11.96422	1	+	185.1174	+	4235.0528	+	5446.4445		ES010C51
K10000C	S2010	09	12.09652	04	56	58.09	+51	53	27.5			ES010C51
K10000C	s2010	09	12.09652	1	+	179.2457	+	4247.5871	+	5436.9947		ES010C51
K10000C	S2010	09	12.22883	04	57	35.01	+51	56	40.5			ES010C51
K10000C	s2010	09	12.22883	1	+	173.4062	+	4260.4939	+	5427.1190		ES010C51
K10000C	S2010	09	12.29492	04	57	53.61	+51	58	15.7			ES010C51
K10000C	s2010	09	12.29492	1	+	160.4976	+	4235.2873	+	5447.1135		ES010C51
K10000C	S2010	09	12.36113	04	58	11.80	+51	59	52.7			ES010C51
K10000C	s2010	09	12.36113	1	+	167.8759	+	4273.8348	+	5416.6146		ES010C51
K10000C	S2010	09	12.42722	04	58	30.16	+52	01	27.0			ES010C51

K10000C	s2010	09	12.42722	1	+	155.1966	+	4248.3690	+	5436.9207		ES010C51
K10000C	S2010	09	12.49331	04	58	48.57	+52	03	01.6			ES010C51
K10000C	s2010	09	12.49331	1	+	142.3667	+	4222.3251	+	5457.6128		ES010C51
K10000C	S2010	09	12.62561	04	59	25.25	+52	06	10.8			ES010C51
K10000C	s2010	09	12.62561	1	+	136.2470	+	4234.4502	+	5448.3040		ES010C51
K10000C	S2010	09	13.08861	05	01	32.56	+52	16	57.9			ES010C51
K10000C	s2010	09	13.08861	1	+	106.5035	+	4248.9347	+	5437.7189		ES010C51
K10000C	S2010	09	13.22079	05	02	08.62	+52	19	59.3			ES010C51
K10000C	s2010	09	13.22079	1	+	81.4631	+	4197.8849	+	5477.6049		ES010C51
K10000C	S2010	09	13.28701	05	02	26.64	+52	21	29.8			ES010C51
K10000C	s2010	09	13.28701	1	+	88.1040	+	4236.8280	+	5447.4684		ES010C51
K10000C	S2010	09	13.35309	05	02	44.41	+52	22	58.5			ES010C51
K10000C	s2010	09	13.35309	1	+	75.9082	+	4211.5315	+	5467.0540		ES010C51
K10000C	S2010	09	13.41918	05	03	02.42	+52	24	27.7			ES010C51
K10000C	s2010	09	13.41918	1	+	63.8094	+	4185.8136	+	5486.8325		ES010C51
K10000C	S2010	09	13.55149	05	03	38.28	+52	27	25.7			ES010C51
K10000C	s2010	09	13.55149	1	+	57.6788	+	4197.2185	+	5478.4612		ES010C51
K10000C	S2010	09	13.68379	05	04	13.96	+52	30	22.0			ES010C51
K10000C	s2010	09	13.68379	1	+	51.6394	+	4210.2996	+	5468.2412		ES010C51
K10000C	S2010	09	13.74988	05	04	31.79	+52	31	49.2			ES010C51
K10000C	s2010	09	13.74988	1	+	39.4754	+	4184.9079	+	5487.6078		ES010C51
K10000C	S2010	09	14.01449	05	05	42.60	+52	37	35.5			ES010C51
K10000C	s2010	09	14.01449	1	+	28.2495	+	4212.0386	+	5467.1696		ES010C51
K10000C	S2010	09	14.14679	05	06	17.97	+52	40	27.7			ES010C51
K10000C	s2010	09	14.14679	1	+	22.1001	+	4225.0307	+	5457.2642		ES010C51
K10000C	S2010	09	14.27897	05	06	53.01	+52	43	16.6			ES010C51
K10000C	s2010	09	14.27897	1	-	1.7827	+	4173.8005	+	5496.4982		ES010C51
K10000C	S2010	09	14.41127	05	07	28.04	+52	46	05.5			ES010C51
K10000C	s2010	09	14.41127	1	-	7.2451	+	4187.4534	+	5485.9574		ES010C51
K10022E	tC2010	09	16.14592	20	51	36.03	-05	55	31.4	22.4	V	ES010291
K10022E	tC2010	09	16.15131	20	51	36.68	-05	55	39.8	22.6	V	ES010291
K10022E	tC2010	09	16.15669	20	51	37.18	-05	55	46.2	22.6	V	ES010291
K100A1D	C2010	09	16.36573	01	35	25.72	+14	41	13.5	20.0	V	ES010691
K100A1D	C2010	09	16.38345	01	35	24.77	+14	40	16.4	19.8	V	ES010691
K100A1D	C2010	09	16.40112	01	35	23.85	+14	39	19.0	19.9	V	ES010691
K100A1F	tC2010	09	16.11899	17	22	54.79	+12	59	52.7			ES010291
K100A1F	tC2010	09	16.12407	17	22	55.45	+12	59	45.7			ES010291
K100A1F	HC2010	09	16.12800	17	22	55.96	+12	59	40.6			ES010291
K100A1L	tC2010	09	16.18313	21	01	46.46	-04	05	47.0			ES010291
K100A1L	tC2010	09	16.18699	21	01	47.07	-04	06	00.5	21.6	V	ES010291
K100A1L	tC2010	09	16.19084	21	01	47.69	-04	06	15.0			ES010291
K10P02Q	KC2010	09	15.38042201	21	58.11	+18	53	12.0		21.9	V	ES010H21
K10P02Q	KC2010	09	15.39840101	21	57.59	+18	53	08.8		22.2	V	ES010H21
K10P02Q	KC2010	09	15.41903001	21	57.07	+18	53	05.0		21.9	V	ES010H21
K10P10M	KC2010	09	03.92785	00	58	02.79	+10	26	58.1	18.1	R	ES010160
K10P10M	KC2010	09	03.93118	00	58	03.16	+10	27	02.4	18.4	R	ES010160
K10P10M	KC2010	09	03.93326	00	58	03.48	+10	27	04.5	18.3	R	ES010160
K10P10M	C2010	09	16.36080	01	25	09.93	+14	37	35.3	18.6	V	ES010691
K10P10M	C2010	09	16.37851	01	25	11.91	+14	37	55.5	18.6	V	ES010691
K10P10M	C2010	09	16.39618	01	25	13.91	+14	38	15.5	18.5	V	ES010691
K10Q02D	KC2010	09	16.44342	03	31	11.23	-00	59	56.0	19.3	R	ES010448
K10Q02D	KC2010	09	16.45256	03	31	10.28	-01	00	04.3	19.4	R	ES010448
K10Q02D	KC2010	09	16.46117	03	31	09.38	-01	00	12.2	19.6	R	ES010448
K10Q02D	KC2010	09	16.47063	03	31	08.37	-01	00	21.3	19.4	R	ES010448
K10Q02D	KC2010	09	16.47972	03	31	07.42	-01	00	29.9	19.4	R	ES010448
K10R00C	C2010	09	16.43581	01	38	42.06	-12	26	15.7	22.6	V	ES010291
K10R00C	HC2010	09	16.44139	01	38	42.84	-12	26	17.2			ES010291
K10R00C	HC2010	09	16.44520	01	38	43.51	-12	26	17.4			ES010291
K10R00D	tC2010	09	16.19820	22	37	08.29	+07	21	53.0	21.3	V	ES010291
K10R00D	tC2010	09	16.20233	22	37	08.09	+07	22	13.5	21.0	V	ES010291
K10R00D	tC2010	09	16.20614	22	37	07.93	+07	22	32.8	21.3	V	ES010291
K10R00F	C2010	09	16.29141	22	46	22.65	+13	25	29.3	20.5	V	ES010G96
K10R00F	C2010	09	16.29897	22	46	22.72	+13	25	57.7	20.4	V	ES010G96
K10R00F	C2010	09	16.30657	22	46	22.80	+13	26	25.2	20.5	V	ES010G96
K10R04J	C2010	09	16.35220	23	42	45.86	+23	56	44.8	19.4		ES010704
K10R04J	C2010	09	16.36466	23	42	50.84	+23	57	52.7	19.2		ES010704
K10R04J	C2010	09	16.37671	23	42	55.66	+23	58	58.4	19.8		ES010704
K10R04J	C2010	09	16.38878	23	43	00.50	+24	00	04.4	20.1		ES010704
K10R04J	C2010	09	16.40086	23	43	05.33	+24	01	09.8	19.4		ES010704
K10R12E	C2010	09	16.29492	22	37	30.43	+12	57	51.1	20.5	V	ES010G96
K10R12E	C2010	09	16.30249	22	37	30.54	+12	57	59.1	21.0	V	ES010G96
K10R12E	C2010	09	16.31006	22	37	30.68	+12	58	07.7	20.4	V	ES010G96
K10R30Q	C2010	09	16.31996	23	31	07.37	-08	46	11.1	20.6	V	ES010291
K10R30Q	C2010	09	16.32381	23	31	07.03	-08	46	13.5	20.6	V	ES010291
K10R30Q	C2010	09	16.32880	23	31	06.54	-08	46	17.3	20.7	V	ES010291
K10R42K	C2010	09	16.40337	03	51	18.14	+07	34	34.8	18.9	V	ES010703
K10R42K	C2010	09	16.41142	03	51	20.12	+07	34	37.9	18.6	V	ES010703
K10R42K	C2010	09	16.41949	03	51	22.10	+07	34	41.8	18.7	V	ES010703
K10R42K	C2010	09	16.42753	03	51	24.12	+07	34	43.3	18.4	V	ES010703
K10R42M	KC2010	09	16.40195	03	07	06.82	+11	04	08.8	19.6	R	ES010448
K10R42M	C2010	09	16.40740	03	07	05.84	+11	04	22.1	19.1	V	ES010703
K10R42M	KC2010	09	16.41184	03	07	04.96	+11	04	34.5	19.5	R	ES010448
K10R42M	C2010	09	16.41545	03	07	04.22	+11	04	45.2	18.8	V	ES010703
K10R42M	KC2010	09	16.42160	03	07	03.08	+11	05	00.4	19.6	R	ES010448
K10R42M	C2010	09	16.43162	03	07	01.20	+11	05	26.8	18.8	V	ES010703
K10R43J	HC2010	09	16.33732	21	17	46.33	+03	53	00.9			ES010291

K10R43J	HC2010	09	16.34149	21	17	45.80	+03	52	52.7			ES010291
K10R43J	HC2010	09	16.34540	21	17	45.48	+03	52	47.6			ES010291
K10R43L	KC2010	09	16.19249	23	41	09.14	+04	25	38.6	20.0	R	ES010448
K10R43L	KC2010	09	16.21492	23	41	11.96	+04	25	27.5	20.4	R	ES010448
K10R43L	KC2010	09	16.23938	23	41	15.02	+04	25	16.1	20.6	R	ES010448
K10R45X	KC2010	09	15.31251301	48	34.10	-10	17	05.5		21.1	V	ES010H21
K10R45X	KC2010	09	15.32576601	48	39.53	-10	18	13.8		21.3	V	ES010H21
K10R45X	KC2010	09	15.34031301	48	45.45	-10	19	28.5		21.3	V	ES010H21
K10R53K	KC2010	09	15.21691423	52	53.53	+26	13	43.7		22.0	V	ES010H21
K10R53K	KC2010	09	15.22938823	52	51.67	+26	13	43.1		21.8	V	ES010H21
K10R53K	KC2010	09	15.24067323	52	49.97	+26	13	41.3		21.7	V	ES010H21
K10R64P	KC2010	09	15.35221201	57	57.01	+00	26	08.6		22.6	V	ES010H21
K10R64P	KC2010	09	15.35828501	58	00.04	+00	25	37.4		22.3	V	ES010H21
K10R64P	KC2010	09	15.36469401	58	03.26	+00	25	04.5		22.6	V	ES010H21
K10R64Q	tC2010	09	15.25002	00	41	04.21	+02	30	21.9	20.4	V	ES010691
K10R64Q	tC2010	09	15.26766	00	41	14.92	+02	32	13.9	19.9	V	ES010691
K10R64Q	tC2010	09	15.28529	00	41	25.46	+02	34	04.4	20.5	V	ES010691
K10R64Q	KC2010	09	15.34104200	41	53.84	+02	39	31.6		20.2	V	ES010H21
K10R64Q	KC2010	09	15.34813500	41	58.07	+02	40	15.5				ES010H21
K10R64Q	KC2010	09	15.35596600	42	02.76	+02	41	04.1		20.7	V	ES010H21
K10R80M	C2010	09	16.23943	23	22	54.80	+07	14	13.5	21.1	V	ES010291
K10R80M	C2010	09	16.24316	23	22	55.00	+07	14	19.7	21.3	V	ES010291
K10R80M	tC2010	09	16.24692	23	22	55.14	+07	14	27.9	21.3	V	ES010291
K10R80N	KC2010	09	15.09101721	41	24.66	-15	54	38.9		17.9	V	ES010H21
K10R80N	KC2010	09	15.10160221	41	23.44	-15	54	10.9		18.4	V	ES010H21
K10R80N	KC2010	09	15.10986921	41	22.48	-15	53	48.9		18.2	V	ES010H21
K10R80P	C2010	09	16.40284	23	59	38.00	+09	06	55.3	19.2	V	ES010G96
K10R80P	C2010	09	16.40925	23	59	38.68	+09	06	52.0	19.3	V	ES010G96
K10R80P	C2010	09	16.41572	23	59	39.37	+09	06	48.5	19.2	V	ES010G96
K10R80P	C2010	09	16.42219	23	59	40.09	+09	06	45.3	19.3	V	ES010G96
K10R80Q	C2010	09	16.42011	23	25	16.37	+09	12	01.2	21.4	V	ES010291
K10R80Q	C2010	09	16.42508	23	25	16.80	+09	11	57.9	20.9	V	ES010291
K10R80Q	C2010	09	16.42907	23	25	17.14	+09	11	55.5	21.2	V	ES010291
K10R80R	C2010	09	16.27538	23	14	27.82	-05	13	53.5	20.8	V	ES010291
K10R80R	C2010	09	16.27916	23	14	27.21	-05	13	45.8	21.1	V	ES010291
K10R80R	C2010	09	16.28321	23	14	26.60	-05	13	37.6	20.9	V	ES010291
K10R80T	KC2010	09	15.11641622	30	19.00	-16	35	11.9		19.8	V	ES010H21
K10R80T	KC2010	09	15.12105922	30	19.60	-16	34	47.9		19.8	V	ES010H21
K10R80T	KC2010	09	15.13490922	30	21.43	-16	33	35.4		19.3	V	ES010H21
K10R80T	KC2010	09	15.13952922	30	22.04	-16	33	11.1		19.9	V	ES010H21
K10R80T	KC2010	09	15.14414622	30	22.65	-16	32	47.4		19.6	V	ES010H21
K10R80T	QC2010	09	16.60868	22	34	00.55	-14	23	41.1			ES010E12
K10R82O	QC2010	09	16.51437	22	13	39.05	-35	49	47.3			ES010E12
K10R91A	tC2010	09	16.29142	22	30	39.49	+02	16	08.8	20.7	V	ES010291
K10R91A	tC2010	09	16.29508	22	30	38.53	+02	15	58.1			ES010291
K10R91A	tC2010	09	16.30012	22	30	37.11	+02	15	44.3	20.4	V	ES010291
K10RDOC	C2010	09	16.22728	21	16	55.27	+13	24	54.1	18.5		ES010704
K10RDOC	C2010	09	16.23973	21	16	56.73	+13	24	42.4	18.8		ES010704
K10RDOC	C2010	09	16.25220	21	16	58.21	+13	24	30.2	18.5		ES010704
K10RDOC	C2010	09	16.26461	21	16	59.72	+13	24	18.9	19.1		ES010704
K10RDOC	C2010	09	16.27690	21	17	01.19	+13	24	06.2	19.2		ES010704
K10S00E	KC2010	09	17.08372202	33	59.67	+24	57	42.6				ES010J95
K10S00E	KC2010	09	17.08673802	34	08.83	+24	55	42.7				ES010J95
K10S00E	KC2010	09	17.08951402	34	17.26	+24	53	51.9		17.9	R	ES010J95
01566	S2010	09	12.65630	17	32	56.69	-65	49	50.3			ES010C51
01566	s2010	09	12.65630	1	+	238.2318	-	2934.1497	-	6253.4539		ES010C51
01566	S2010	09	12.78861	17	32	01.27	-65	45	59.5			ES010C51
01566	s2010	09	12.78861	1	+	241.0396	-	2949.4210	-	6246.2709		ES010C51
01566	S2010	09	12.85469	17	31	33.67	-65	44	03.6			ES010C51
01566	s2010	09	12.85469	1	+	251.8218	-	2920.2871	-	6259.5907		ES010C51
01566	S2010	09	12.92078	17	31	06.21	-65	42	08.0			ES010C51
01566	s2010	09	12.92078	1	+	262.5246	-	2890.4690	-	6272.8646		ES010C51
01566	S2010	09	12.92091	17	31	06.12	-65	42	08.3			ES010C51
01566	s2010	09	12.92091	1	+	243.3446	-	2964.3124	-	6239.0766		ES010C51
01566	S2010	09	12.98700	17	30	38.81	-65	40	11.7			ES010C51
01566	s2010	09	12.98700	1	+	254.4919	-	2933.9812	-	6252.9531		ES010C51
01566	S2010	09	13.11930	17	29	44.41	-65	36	18.6			ES010C51
01566	s2010	09	13.11930	1	+	257.7751	-	2947.0801	-	6246.5522		ES010C51
02100	KC2010	09	04.05669	04	58	19.18	+11	42	21.2	17.9	R	ES010160
02100	KC2010	09	04.05918	04	58	19.79	+11	42	18.0	17.9	R	ES010160
02100	KC2010	09	04.06206	04	58	20.54	+11	42	14.9	18.3	R	ES010160
02212	C2010	09	16.75498	02	36	34.75	+09	43	08.1	15.5	V	ES010379
02212	C2010	09	16.75683	02	36	34.46	+09	43	07.3	15.5	V	ES010379
02212	C2010	09	16.75868	02	36	34.15	+09	43	06.0	15.7	V	ES010379
02212	C2010	09	16.76330	02	36	33.43	+09	43	04.0	15.7	V	ES010379
02212	C2010	09	16.76515	02	36	33.15	+09	43	03.2	15.6	V	ES010379
02212	C2010	09	16.76700	02	36	32.85	+09	43	02.4	15.6	V	ES010379
02212	C2010	09	17.03407	02	35	52.19	+09	41	01.5	15.6	V	ES010J93
02212	C2010	09	17.03691	02	35	51.75	+09	40	59.9	15.7	V	ES010J93
02212	C2010	09	17.03976	02	35	51.30	+09	40	59.0	15.7	V	ES010J93
03122	C2010	09	16.97691	06	38	27.38	+57	10	56.1	14.9	V	ES010J93
03122	C2010	09	16.97833	06	38	27.90	+57	10	58.4	14.8	V	ES010J93
03122	C2010	09	16.97975	06	38	28.44	+57	11	00.3	14.9	V	ES010J93
03200	C2010	09	16.47196	07	31	36.40	+26	47	29.2	17.6	V	ES010703
03200	C2010	09	16.47897	07	31	37.66	+26	47	25.4	17.7	V	ES010703
03200	C2010	09	16.48597	07	31	38.92	+26	47	21.1	17.7	V	ES010703

03200	C2010	09	16.49300	07	31	40.22	+26	47	17.3	17.7	V	ES010703
04197	KC2010	09	04.00501	02	55	42.71	+17	42	54.7	16.9	R	ES010160
04197	KC2010	09	04.00777	02	55	43.07	+17	42	58.1	17.1	R	ES010160
04197	KC2010	09	04.01050	02	55	43.43	+17	43	01.6	17.0	R	ES010160
04197	C2010	09	16.41246	03	29	51.63	+23	13	08.8	15.6		ES010704
04197	C2010	09	16.43695	03	29	56.62	+23	13	58.1	16.3		ES010704
04197	KC2010	09	16.44118	03	29	57.28	+23	14	06.6	16.6	R	ES010H47
04197	KC2010	09	16.44871	03	29	58.81	+23	14	21.7	16.5	R	ES010H47
04197	C2010	09	16.44923	03	29	59.12	+23	14	23.0	16.4		ES010704
04197	KC2010	09	16.45565	03	30	00.26	+23	14	35.7	16.4	R	ES010H47
04197	C2010	09	16.46144	03	30	01.61	+23	14	47.2	16.2		ES010704
04954	KC2010	09	04.10806	05	57	13.54	+35	06	55.9	14.5	R	ES010160
04954	KC2010	09	04.11085	05	57	14.34	+35	06	57.8	14.5	R	ES010160
04954	KC2010	09	04.11362	05	57	15.22	+35	07	00.9	14.4	R	ES010160
04954	C2010	09	17.02094	07	06	57.98	+37	57	14.0	14.3	V	ES010J93
04954	C2010	09	17.02520	07	06	59.29	+37	57	16.0	14.3	V	ES010J93
04954	C2010	09	17.02946	07	07	00.68	+37	57	17.9	14.2	V	ES010J93
06239	C2010	09	14.92223	22	43	23.96	-06	20	02.9	15.9	R	ES010I89
06239	C2010	09	14.92389	22	43	23.71	-06	20	03.2	15.9	R	ES010I89
06239	C2010	09	14.92556	22	43	23.46	-06	20	03.6	15.9	R	ES010I89
06239	C2010	09	14.92723	22	43	23.20	-06	20	03.9	16.0	R	ES010I89
06239	C2010	09	14.92890	22	43	22.94	-06	20	04.2	16.0	R	ES010I89
06239	C2010	09	16.98466	22	38	50.22	-06	26	28.8	16.8	V	ES010J93
06239	C2010	09	16.98894	22	38	49.66	-06	26	29.0	16.7	V	ES010J93
06239	C2010	09	16.99059	22	38	49.42	-06	26	29.4	16.8	V	ES010J93
06611	C2010	09	16.17273	21	10	21.72	-02	28	19.7	20.7	V	ES010G96
06611	C2010	09	16.18041	21	10	21.32	-02	28	23.4	20.4	V	ES010G96
06611	C2010	09	16.18815	21	10	20.92	-02	28	27.2	20.6	V	ES010G96
06611	C2010	09	16.19569	21	10	20.53	-02	28	30.5	20.3	V	ES010G96
12538	C2010	09	16.29934	00	40	34.80	+30	16	01.0	18.5		ES010704
12538	C2010	09	16.31190	00	40	33.79	+30	15	53.9	18.8		ES010704
12538	C2010	09	16.32471	00	40	32.78	+30	15	45.9	19.0		ES010704
12538	C2010	09	16.33736	00	40	31.79	+30	15	39.2	19.0		ES010704
12538	C2010	09	16.34991	00	40	30.83	+30	15	31.7	18.9		ES010704
19764	C2010	09	14.89689	00	26	25.98	+06	51	56.3	15.6	R	ES010I89
19764	C2010	09	14.89856	00	26	25.87	+06	51	55.6	15.2	R	ES010I89
19764	C2010	09	14.90023	00	26	25.76	+06	51	55.0	15.4	R	ES010I89
19764	C2010	09	14.90193	00	26	25.65	+06	51	54.3	15.3	R	ES010I89
19764	C2010	09	14.90363	00	26	25.54	+06	51	53.6	15.4	R	ES010I89
19764	C2010	09	15.30187	00	26	00.02	+06	49	14.4	16.2	R	ES010H47
19764	C2010	09	15.30564	00	25	59.76	+06	49	13.0	16.3	R	ES010H47
19764	C2010	09	15.31171	00	25	59.35	+06	49	10.5	16.2	R	ES010H47
19764	C2010	09	15.31539	00	25	59.09	+06	49	08.9	16.1	R	ES010H47
19764	C2010	09	15.31858	00	25	58.87	+06	49	07.7	16.2	R	ES010H47
19764	C2010	09	15.32198	00	25	58.64	+06	49	06.2	16.2	R	ES010H47
19764	C2010	09	15.90086	00	25	23.41	+06	45	07.8	16.0	R	ES010I89
19764	C2010	09	15.90252	00	25	23.30	+06	45	07.0	16.0	R	ES010I89
19764	C2010	09	15.90419	00	25	23.19	+06	45	06.4	16.0	R	ES010I89
19764	C2010	09	15.90586	00	25	23.08	+06	45	05.6	16.1	R	ES010I89
19764	C2010	09	15.90753	00	25	22.97	+06	45	04.9	16.0	R	ES010I89
19764	C2010	09	16.67350	00	24	34.20	+06	39	48.6	16.0	V	ES010379
19764	C2010	09	16.67535	00	24	34.08	+06	39	47.9	16.3	V	ES010379
19764	C2010	09	16.67997	00	24	33.78	+06	39	45.8	16.4	V	ES010379
19764	C2010	09	16.68182	00	24	33.64	+06	39	45.2	16.3	V	ES010379
19764	C2010	09	16.68831	00	24	33.19	+06	39	42.6	16.2	V	ES010379
19764	C2010	09	16.69016	00	24	33.06	+06	39	42.0	16.3	V	ES010379
19764	C2010	09	16.69201	00	24	33.00	+06	39	40.8	16.6	V	ES010379
19764	C2010	09	16.69663	00	24	32.66	+06	39	38.9	16.5	V	ES010379
19764	C2010	09	16.69848	00	24	32.54	+06	39	38.3	16.4	V	ES010379
19764	C2010	09	16.70034	00	24	32.41	+06	39	37.7	16.6	V	ES010379
19764	C2010	09	16.99905	00	24	14.06	+06	37	28.7	16.2	V	ES010J93
19764	C2010	09	17.00331	00	24	13.77	+06	37	26.8	16.3	V	ES010J93
19764	C2010	09	17.00757	00	24	13.49	+06	37	25.3	16.3	V	ES010J93
52768	HC2010	09	15.25495	00	56	02.43	+03	10	01.4	21.2	V	ES010691
52768	HC2010	09	15.29022	00	56	00.66	+03	09	50.7	21.0	V	ES010691
66008	C2010	09	16.33501	00	12	43.09	-19	06	08.1	17.7	V	ES010703
66008	C2010	09	16.34245	00	12	42.22	-19	06	28.0	17.7	V	ES010703
66008	C2010	09	16.34998	00	12	41.32	-19	06	49.5	17.7	V	ES010703
66008	C2010	09	16.35744	00	12	40.46	-19	07	10.2	18.0	V	ES010703
66146	KC2010	09	04.02215	03	41	27.59	+00	42	41.1	14.4	R	ES010160
66146	KC2010	09	04.02489	03	41	27.54	+00	42	37.3	14.2	R	ES010160
66146	KC2010	09	04.02767	03	41	27.50	+00	42	33.3	14.4	R	ES010160
89830	KC2010	09	04.08235	05	42	19.30	+12	34	09.8	17.3	R	ES010160
89830	KC2010	09	04.08519	05	42	19.86	+12	34	23.9	17.1	R	ES010160
89830	KC2010	09	04.08774	05	42	20.39	+12	34	36.5	17.2	R	ES010160
D8847	C2010	09	16.28981	23	28	54.46	+23	20	03.7	19.0		ES010704
D8847	C2010	09	16.30192	23	28	53.49	+23	19	47.1	19.0		ES010704
D8847	C2010	09	16.31447	23	28	52.54	+23	19	29.4	19.0		ES010704
D8847	C2010	09	16.32742	23	28	51.57	+23	19	10.6	18.9		ES010704
D8847	C2010	09	16.33994	23	28	50.58	+23	18	52.7	19.0		ES010704
D9345	KC2010	09	16.49818	04	35	00.47	-17	44	05.6	19.3	R	ES010448
D9345	KC2010	09	16.50068	04	35	00.77	-17	44	09.1	19.4	R	ES010448
F2558	C2010	09	15.87141	23	07	58.66	-02	26	12.8	14.9	R	ES010A92
F2558	C2010	09	15.87840	23	07	58.68	-02	26	57.3	14.8	R	ES010A92
F2558	C2010	09	15.88187	23	07	58.73	-02	27	19.7	14.8	R	ES010A92
F2558	C2010	09	15.88581	23	07	58.75	-02	27	45.4	14.8	R	ES010A92

F2558	C2010	09	15.89019	23	07	58.76	-02	28	14.5	14.8	R	ES010A92
F2558	C2010	09	15.89661	23	07	58.81	-02	28	55.8	14.7	R	ES010A92
F2558	C2010	09	16.97072	23	08	14.65	-04	22	03.3	15.7	V	ES010J93
F2558	C2010	09	16.97214	23	08	14.65	-04	22	11.9	15.6	V	ES010J93
F2558	C2010	09	16.97356	23	08	14.67	-04	22	21.2	15.6	V	ES010J93
F2952	KC2010	09	03.97926	02	36	39.47	+20	42	12.7	18.8	R	ES010160
F2952	KC2010	09	03.98205	02	36	38.81	+20	42	26.5	18.4	R	ES010160
F2952	KC2010	09	03.98471	02	36	38.24	+20	42	39.9	18.5	R	ES010160
F3842	KC2010	09	04.03940	04	32	25.74	+07	04	30.5	18.5	R	ES010160
F3842	KC2010	09	04.04217	04	32	26.28	+07	04	29.5	18.3	R	ES010160
F3842	KC2010	09	04.04489	04	32	26.86	+07	04	28.7	17.9	R	ES010160
F4029	KC2010	09	03.95351	01	57	56.25	+24	38	53.2	14.7	R	ES010160
F4029	KC2010	09	03.95624	01	57	54.12	+24	39	30.7	14.7	R	ES010160
F4029	KC2010	09	03.95898	01	57	52.01	+24	40	08.3	14.7	R	ES010160
F4029	C2010	09	16.85621	22	59	52.06	+51	49	25.6	15.8		ES010J16
F4029	C2010	09	16.86060	22	59	48.96	+51	49	35.3	15.8		ES010J16
F4029	C2010	09	16.86524	22	59	45.68	+51	49	45.7	15.9		ES010J16
F4029	C2010	09	17.01259	22	58	01.34	+51	55	04.0	15.2	V	ES010J93
F4029	C2010	09	17.01402	22	58	00.34	+51	55	06.9	15.2	V	ES010J93
F4029	C2010	09	17.01543	22	57	59.37	+51	55	09.8	15.1	V	ES010J93
G2913	HC2010	09	15.25741	01	03	02.97	+02	27	50.9	20.6	V	ES010691
G2913	HC2010	09	15.27505	01	03	01.40	+02	27	33.3	20.8	V	ES010691
G2913	HC2010	09	15.29268	01	02	59.91	+02	27	17.3	20.6	V	ES010691
G2913	C2010	09	16.24574	01	01	38.11	+02	11	51.2	20.2	V	ES010691
G2913	C2010	09	16.26341	01	01	36.54	+02	11	34.0	20.2	V	ES010691
G2913	C2010	09	16.28107	01	01	34.97	+02	11	16.6	20.1	V	ES010691
G4121	S2010	09	11.72431	06	23	08.88	-80	54	07.9			ES010C51
G4121	s2010	09	11.72431	1	+	1089.1371	+	820.3122	-	6776.2960		ES010C51
G4121	S2010	09	11.85649	06	22	43.55	-80	57	52.7			ES010C51
G4121	s2010	09	11.85649	1	+	1099.7391	+	886.5714	-	6766.3180		ES010C51
G4121	S2010	09	11.85662	06	22	42.56	-80	57	52.6			ES010C51
G4121	s2010	09	11.85662	1	+	1083.8040	+	805.6432	-	6778.9918		ES010C51
G4121	S2010	09	11.98880	06	22	16.18	-81	01	36.4			ES010C51
G4121	s2010	09	11.98880	1	+	1094.4477	+	874.0058	-	6768.8129		ES010C51
G4121	S2010	09	12.25340	06	21	21.30	-81	09	05.4			ES010C51
G4121	s2010	09	12.25340	1	+	1084.9375	+	848.0008	-	6773.5402		ES010C51
G4121	S2010	09	12.38571	06	20	52.76	-81	12	50.0			ES010C51
G4121	s2010	09	12.38571	1	+	1079.6704	+	833.0501	-	6776.2607		ES010C51
G4121	S2010	09	12.98101	06	18	34.75	-81	29	44.2			ES010C51
G4121	s2010	09	12.98101	1	+	1065.2074	+	812.3818	-	6781.0652		ES010C51
G4121	S2010	09	13.04710	06	18	18.66	-81	31	36.3			ES010C51
G4121	s2010	09	13.04710	1	+	1070.1639	+	846.8456	-	6776.1779		ES010C51
G4121	S2010	09	13.17941	06	17	45.60	-81	35	23.0			ES010C51
G4121	s2010	09	13.17941	1	+	1065.6780	+	833.2976	-	6778.4301		ES010C51
G4121	S2010	09	13.24562	06	17	28.56	-81	37	13.8			ES010C51
G4121	s2010	09	13.24562	1	+	1056.2754	+	785.3263	-	6785.5469		ES010C51
G4121	S2010	09	13.31171	06	17	11.15	-81	39	09.6			ES010C51
G4121	s2010	09	13.31171	1	+	1060.9118	+	818.3893	-	6780.8558		ES010C51
J0208	2C2010	05	16.50750216	13	21	054-27	19	46.72		22.4	R	ES010568
J0208	2C2010	05	16.50985016	13	20	876-27	19	46.38		22.3	R	ES010568
J0208	2C2010	05	16.51364816	13	20	596-27	19	45.81		22.6	R	ES010568
L9071	C2010	09	16.41675	04	10	46.20	+30	10	42.5	18.3		ES010704
L9071	C2010	09	16.42906	04	10	46.88	+30	10	33.0	18.9		ES010704
L9071	C2010	09	16.44125	04	10	47.72	+30	10	22.5	18.5		ES010704
L9071	C2010	09	16.45354	04	10	48.45	+30	10	12.4	18.7		ES010704
L9071	C2010	09	16.46573	04	10	49.14	+30	10	01.9	18.7		ES010704
O2211	KC2010	09	03.97064	02	17	50.44	+00	00	49.8	17.3	R	ES010160
O2211	KC2010	09	03.97336	02	17	50.76	+00	00	48.9	17.7	R	ES010160
O2211	KC2010	09	03.97611	02	17	51.09	+00	00	48.9	17.7	R	ES010160
O2211	C2010	09	16.36951	02	36	51.12	-00	48	43.3	17.5	V	ES010703
O2211	C2010	09	16.37810	02	36	51.62	-00	48	45.3	17.5	V	ES010703
O2211	C2010	09	16.38554	02	36	52.02	-00	48	47.7	17.5	V	ES010703
O2211	C2010	09	16.39304	02	36	52.41	-00	48	49.7	17.4	V	ES010703
O3147	C2010	09	16.35495	01	37	27.92	+29	24	35.6	18.4		ES010704
O3147	C2010	09	16.37946	01	37	26.45	+29	24	34.7	18.9		ES010704
O3147	C2010	09	16.39154	01	37	25.82	+29	24	35.0	18.2		ES010704
O3147	C2010	09	16.40363	01	37	25.12	+29	24	35.3	18.2		ES010704
O3147	C2010	09	16.43448	01	37	23.48	+29	24	35.6	18.1	V	ES010703
O3147	C2010	09	16.44194	01	37	23.05	+29	24	35.7	18.0	V	ES010703
O3147	C2010	09	16.44948	01	37	22.65	+29	24	35.4	18.0	V	ES010703
O3147	C2010	09	16.45702	01	37	22.22	+29	24	35.8	18.0	V	ES010703

A. U. Tomatic

(C) Copyright 2010 MPC

M.P.E.C. 2010-S10



[Read MPEC 2010-S09](#)



[Read MPEC 2010-S11](#)

Display

MPEC number:

Clear

Enter an [MPEC](#) number in one of the following forms:

- 1997-B01 (the full form)
- J97B01 (the packed version of the full form)
- B01 (the abbreviated form)



Choose a language to translate this page!



Select to language

<p>Select Language</p>	
	Gadgets powered by Google

