

IAU Minor Planet Center

MPC Operations Status

Processing ([Info](#))
ECS: Accessible

Observer Services (NEOs)

- NEO Services Overview
- NEO Confirmation
- NEO Confirmation (RA order)
- NEO Ratings
- NEO Page
- NEO Observation Planning Aid
- NEOChecker
- NEOCMTChecker

Observer Services

- Services Overview
- IAUMail
- Minor Planet & Comet Ephem.
- Natural Satellite Ephemerides
- New Object Ephemerides
- MPChecker
- CMTChecker
- Distant Artificial Satellites
- Observing List Customizer
- Sky Coverage

Orbital Elements

- Orbital Elements Overview
- MPCORB
- Orbital Elements for Programs
- MPCAT
- MPCUPDATE

Astrometric Observations

- MPCAT-OBS
- MPCOBS
- Publications**
- Publications Overview
- MPECs
- MPC Archive
- MPC RSS Feeds
- CBAT RSS Feeds

Documentation

- Documentation Overview
- Minor Body Astrometry
- MPC Status Page
- What's New

Lists and Plots

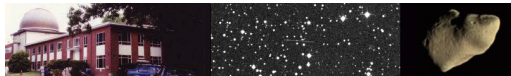
- Lists and Plots Overview
- Minor Planets
- Comets
- Animations

General Information

- Astronomical Headlines
- Press Information Sheets

General

- Contact Us
- Index
- Site Map
- Search Site



MPEC 2010-R109: DAILY ORBIT UPDATE (2010 SEPT. 14 UT)

The following [Minor Planet Electronic Circular](#) may be linked-to from your own Web pages, but must **not** otherwise be [redistributed electronically](#). A form allowing access to any MPEC is at [the bottom of this page](#).

[Read MPEC 2010-R108](#) [Read MPEC 2010-R110](#)

M.P.E.C. 2010-R109

Issued 2010 Sept.14, 06:10 UT

The Minor Planet Electronic Circulars contain information on unusual minor planets and routine data on comets. They are published on behalf of Commission 20 of the International Astronomical Union by the Minor Planet Center, Smithsonian Astrophysical Observatory, Cambridge, MA 02138, U.S.A.

Prepared using the [Tamkin Foundation Computer Network](#)

MPC@CFA.HARVARD.EDU

URL <http://www.minorplanetcenter.org/iau/mpc.html> ISSN 1523-6714

DAILY ORBIT UPDATE (2010 SEPT. 14 UT)

Update to MPEC 2010-RA6

Full-precision elements for the objects listed here are available at <http://www.minorplanetcenter.org/iau/MPCORB.html>

New identification:

J97G25Q	K09F29Q		MPCS
J98M16S	K06B27T	K09V11H	MPCS
K02AK0S	K09A02A		MPCS
K05ST3Q	K09O06M		MPCS
K05XA5Q	J98S03Q	K09Q21E	MPCS
K06B13K	K09T22Z		MPCS
K06U32X	K09R05S		MPCS
K06X12N	K08E06W	K09Q01M	MPCS
K09A25L	K02J18A	K07RI6J	MPCS
K09B80T	K05EP1L		MPCS
K09BB1Q	K05B47S		MPCS
K09C40E	K10JF9B		MPCS
K09C52Y	K10CJ9Q		MPCS
K09D04B	K10P09A		MPCS
K09D92J	K10R87F		MPCS
K09DA3B	K06P03M		MPCS
K09E18D	K10F49R		MPCS
K09F09L	J96E04X	K10P18Z	MPCS
K09F12R	K02N50Y		MPCS
K09F50F	K00A03X		MPCS
K09H18C	K10NA3U		MPCS
K09H26V	K05SJ5U		MPCS
K09H42L	K10H91M		MPCS
K09H66G	K10M52J		MPCS
K09H72Z	K10LB7D		MPCS
K09H92B	J98W28A		MPCS
K09HA10	K10M83X		MPCS
K09K04E	K10K00M		MPCS
K09Q07T	K08G27V		MPCS
K09Q11R	K08D74S		MPCS
K09Q21N	K08E71H		MPCS
K09R06C	J98R44G		MPCS
K09R33W	K05UV9N		MPCS
K09R480	K03H37X		MPCS
K09R74K	K08D78L		MPCS
K09S12U	K05S52N		MPCS

Tech Intro
 Documentation
Links
 Minor Planet Center
 Central Bureau for Astro. Tel.
International Comet Quarterly
 Smithsonian Astro. Obs.

K09S160	K02TW0T	MPCS
K09S36C	K05T97K	MPCS
K09S50R	K05T36B	MPCS
K09S64S	K01U85M	MPCS
K09S72Q	K06A67P	MPCS
K09SC8U	K04E77U	MPCS
K09SF7R	K04BF2B	MPCS
K09SG3K	J95S77Y	MPCS
K09SM2L	K04S47M	MPCS
K09SO2Q	K05X76K	MPCS
K09T05V	K00SJ1Y	MPCS
K09T25J	K04BG2W	MPCS
K09U13W	K01E22Q	MPCS
K09U30J	K00G44V	MPCS
K09U31Y	K07J24A	MPCS
K09U37C	K07B48L	MPCS
K09U58D	K02VD5Q	MPCS
K10G23Q	K08O08L	MPCS
K10G33G	K06KB4V	MPCS
K10G66R	K00V60H	MPCS
K10G97A	J96J08K	MPCS
K10GA9X	K03Uf3J	MPCS
K10GD0N	K03UW2D	MPCS
K10M90B	K01W59M	MPCS
K10Q01D	K05E81X	MPCS
K10Q04H	K05TG3X	MPCS

K04V90P

New double designation:

K09R25S	K10AB2F	MPCS
K09S77E	K10AC3W	MPCS
K09S80V	K09S88Y	MPCS
K09SM8Z	K10B83V	MPCS
K09T25J	K10AA1Y	MPCS
K10G33G	K10LC1K	MPCS

New multiple-opposition orbits:

Object	H	G	Epoch	M	Peri.	Node	Incl.	e	a	Opp	C
J96T15X	15.7	0.15	K107N	106.832	151.913	321.219	10.494	0.03427	3.03899	2	S
J97G03L	19.2	0.15	K107N	329.946	260.919	195.864	6.680	0.78062	2.27841	2	W
J97G25Q	18.5	0.15	K107N	114.360	141.888	45.426	33.195	0.36211	2.53787	2	S
J98M16S	16.3	0.15	K107N	107.562	231.301	90.604	1.900	0.21207	2.98392	3	X
J99A31C	17.5	0.15	K107N	298.392	291.310	127.980	5.506	0.27718	2.61788	3	X
J99R41L	17.0	0.15	K107N	4.751	308.928	11.999	17.999	0.55111	3.09414	3	X
J99RA5Z	16.4	0.15	K107N	17.014	78.507	222.065	12.460	0.25429	2.38191	3	X
J99S00C	17.6	0.15	K107N	352.918	330.199	359.455	5.071	0.29813	2.39412	2	X
J99T04T	15.2	0.15	K107N	325.731	52.390	17.002	27.232	0.33950	3.10563	4	X
J99T21P	15.1	0.15	K107N	332.543	339.112	48.206	14.581	0.24294	3.18675	5	X
J99TA9Y	17.0	0.15	K107N	327.124	88.969	290.298	6.156	0.22295	2.38564	4	X
J99TL7G	15.6	0.15	K107N	1.554	294.569	37.325	21.580	0.41180	3.13567	3	X
J99TQ6H	14.6	0.15	K107N	310.646	198.351	216.622	16.713	0.18800	3.12732	6	X
J99TS6Y	15.8	0.15	K107N	341.682	150.727	216.515	16.457	0.22497	3.15167	3	X
K00EE3M	16.4	0.15	K107N	349.392	35.585	338.390	3.489	0.17248	2.52164	6	X
K00P27Q	19.8	0.15	K107N	339.756	44.192	321.309	7.293	0.42068	2.22834	2	X
K00QP4S	16.4	0.15	K107N	333.373	287.855	82.714	7.411	0.20455	2.23633	5	X
K00R25F	16.8	0.15	K107N	44.452	56.032	228.005	9.187	0.16049	2.21691	6	X
K00S40H	17.0	0.15	K107N	307.997	335.288	58.078	4.106	0.17903	2.25675	5	X
K00U13J	15.5	0.15	K107N	22.294	89.661	236.132	10.392	0.09440	2.96499	5	X
K00U37M	15.2	0.15	K107N	302.976	195.830	217.987	16.326	0.15058	3.01922	6	X
K00V53L	14.7	0.15	K107N	336.674	128.443	253.231	8.242	0.11553	3.00135	5	X
K00V62F	15.3	0.15	K107N	271.626	105.615	344.876	25.807	0.32408	2.30031	4	X
K00W08V	14.8	0.15	K107N	319.433	130.780	275.994	10.898	0.21651	3.05508	5	X
K01C15R	14.7	0.15	K107N	255.460	12.172	117.081	9.118	0.11644	3.15007	5	X
K01G06U	15.2	0.15	K107N	87.990	235.024	40.300	22.502	0.08488	2.43341	5	X
K01P67J	16.3	0.15	K107N	345.805	218.007	132.461	10.695	0.20638	2.72153	8	X
K01QA3E	16.4	0.15	K107N	1.162	211.341	135.914	7.282	0.21967	2.65798	2	X
K01QA4L	16.1	0.15	K107N	339.769	47.424	339.880	7.193	0.32213	2.70186	4	X
K01S13T	16.3	0.15	K107N	337.956	13.333	359.363	8.559	0.32421	2.72854	2	X
K01SG6N	15.5	0.15	K107N	287.660	256.266	178.166	8.357	0.27727	2.76808	5	X
K01SR8T	15.9	0.15	K107N	318.653	191.835	216.922	14.939	0.27646	2.76945	2	X
K01T19V	15.3	0.15	K107N	323.195	142.737	239.783	15.295	0.24490	2.79777	3	X
K01TB7T	15.2	0.15	K107N	17.103	12.986	273.414	16.955	0.32035	2.76870	3	X
K01TG9P	15.8	0.15	K107N	277.971	179.971	283.578	7.998	0.24715	2.79396	4	X
K01TL5T	15.8	0.15	K107N	342.726	31.244	1.315	13.320	0.19383	2.72595	5	X
K01U54R	17.1	0.15	K107N	350.777	59.465	289.600	11.120	0.32361	2.73747	2	X
K01UL9W	15.7	0.15	K107N	276.821	91.710	351.477	9.013	0.19080	2.81113	4	X
K01V73Y	15.6	0.15	K107N	359.645	40.593	292.549	12.360	0.22031	2.79070	2	X
K02AK0S	17.0	0.15	K107N	108.453	40.646	123.215	5.824	0.09165	2.31456	2	S
K02B16F	17.3	0.15	K107N	252.406	312.925	131.433	6.337	0.10811	2.20840	6	X
K02CB6Z	16.6	0.15	K107N	319.990	258.455	140.544	9.491	0.33771	2.89452	4	X
K02E89O	14.5	0.15	K107N	121.918	268.773	301.191	9.146	0.12947	3.21126	4	X
K02EA3C	16.6	0.15	K107N	35.407	313.292	0.950	6.152	0.13207	2.25360	4	X
K02N05Z	17.1	0.15	K107N	210.620	183.740	293.409	19.267	0.04542	1.89154	4	X
K02PD9A	17.0	0.15	K107N	7.380	359.455	321.424	19.960	0.04574	1.91708	4	X
K02RD6D	16.9	0.15	K107N	356.521	207.004	120.976	6.542	0.26200	2.52732	4	X
K02RI3B	16.3	0.15	K107N	345.014	60.217	293.722	12.186	0.19711	2.53052	4	X

K02S13E	17.1	0.15	K107N	306.916	87.288	319.429	17.778	0.12612	1.91762	3	X
K02S30L	15.2	0.15	K107N	193.895	112.584	38.518	13.997	0.09889	2.55052	6	X
K02S51C	17.0	0.15	K107N	286.683	221.668	188.302	24.670	0.10858	1.92682	4	X
K02T69Z	16.7	0.15	K107N	324.293	3.608	41.009	16.267	0.17366	2.52599	4	X
K02TN5F	15.8	0.15	K107N	313.371	144.308	248.723	12.414	0.16872	2.56516	6	X
K02TN6U	15.3	0.15	K107N	275.551	166.521	274.688	12.338	0.15079	2.57711	6	X
K02TP2Z	17.2	0.15	K107N	341.039	142.461	219.957	3.695	0.22688	2.55902	6	X
K02TQ5B	15.7	0.15	K107N	293.888	194.363	228.533	12.235	0.16795	2.60294	3	X
K02TR8E	17.0	0.15	K107N	315.064	65.063	325.228	7.837	0.21089	2.57153	4	X
K02TY0S	17.2	0.15	K107N	67.951	61.836	173.750	12.442	0.22498	2.61629	5	X
K02U12M	15.6	0.15	K107N	310.784	357.648	67.608	14.671	0.28693	2.56858	4	X
K02U20Z	16.9	0.15	K107N	354.859	310.409	33.593	15.910	0.24285	2.54820	4	X
K02V03D	16.2	0.15	K107N	323.421	139.976	241.735	12.671	0.18730	2.58869	3	X
K02V34D	15.7	0.15	K107N	319.479	142.838	239.363	12.481	0.11617	2.64845	5	X
K02VC0V	16.0	0.15	K107N	291.072	153.441	273.360	12.606	0.16495	2.60830	3	X
K02X22M	15.8	0.15	K107N	279.726	158.089	269.865	13.942	0.13309	2.65348	3	X
K02X70N	15.8	0.15	K107N	310.229	329.790	72.294	10.644	0.10344	2.64632	5	X
K03A38B	16.4	0.15	K107N	280.620	197.498	249.831	6.278	0.27137	2.65990	3	X
K03A42F	16.5	0.15	K107N	326.115	201.839	213.498	4.827	0.31195	2.59349	3	X
K03B54L	16.6	0.15	K107N	314.890	122.324	289.928	10.735	0.29019	2.64650	4	X
K03B67J	15.8	0.15	K107N	279.945	331.476	116.965	15.243	0.16200	2.72200	5	X
K03B73L	16.7	0.15	K107N	309.617	323.191	108.548	6.854	0.24120	2.61453	4	X
K03F07D	17.5	0.15	K107N	320.674	264.358	316.858	4.376	0.14289	2.41016	7	X
K03M04J	18.8	0.15	K107N	349.354	270.603	78.294	5.316	0.56067	2.30787	2	X
K03Q71Q	16.6	0.15	K107N	356.138	138.493	190.698	22.616	0.21748	2.31940	4	X
K03QA6K	17.3	0.15	K107N	359.776	211.503	133.232	6.572	0.20131	2.27634	4	X
K03R02W	17.5	0.15	K107N	348.672	354.138	351.356	3.240	0.20070	2.29516	2	X
K03S75X	16.5	0.15	K107N	328.430	201.627	170.364	6.859	0.15076	2.32084	5	X
K03SJ5N	16.7	0.15	K107N	350.946	73.185	272.808	5.527	0.12646	2.33824	6	X
K03SU0B	17.4	0.15	K107N	296.669	93.281	321.119	5.439	0.21593	2.32720	5	X
K03T10T	17.3	0.15	K107N	288.603	172.903	249.632	6.145	0.09728	2.32484	3	X
K03U23U	16.6	0.15	K107N	9.279	96.893	220.860	10.726	0.24709	2.34888	4	X
K03U93P	17.2	0.15	K107N	354.453	115.198	216.723	5.979	0.13921	2.34990	2	X
K03UA1L	17.6	0.15	K107N	328.667	299.323	72.366	3.027	0.26280	2.33683	3	X
K03UD0D	16.7	0.15	K107N	334.301	90.360	304.574	4.144	0.23035	2.31374	3	X
K03US7R	17.7	0.15	K107N	0.534	274.761	44.801	3.004	0.18437	2.35958	2	X
K03W03P	16.9	0.15	K107N	311.815	333.175	79.889	6.271	0.13736	2.34764	4	X
K03W92G	16.7	0.15	K107N	329.991	247.051	123.351	6.313	0.22754	2.37281	4	X
K03WC6R	16.3	0.15	K107N	303.736	359.088	41.776	7.985	0.13651	2.42900	5	X
K03Y56A	16.4	0.15	K107N	304.359	309.095	88.289	7.399	0.10837	2.42859	7	X
K03YC5Y	16.4	0.15	K107N	306.885	111.342	291.146	12.687	0.18028	2.38969	4	X
K04B95D	15.5	0.15	K107N	211.827	208.781	284.326	12.905	0.04425	2.60426	5	X
K04B97C	16.7	0.15	K107N	135.856	250.392	306.563	9.650	0.07120	2.61722	5	X
K04D14Z	15.8	0.15	K107N	135.716	287.259	274.178	12.433	0.17965	2.66800	5	X
K04E33G	16.7	0.15	K107N	198.278	154.373	346.001	4.783	0.04201	2.64567	4	X
K04FC2T	17.3	0.15	K107N	90.424	237.005	349.631	19.538	0.04675	1.94252	4	X
K04H02E	16.8	0.15	K107N	231.870	276.061	192.774	22.130	0.10538	1.91065	5	X
K04H78C	15.3	0.15	K107N	8.750	105.890	199.430	24.277	0.35232	3.08327	5	X
K04N09V	14.9	0.15	K107N	347.321	59.589	296.952	13.334	0.24885	3.17563	5	X
K04N09Z	15.4	0.15	K107N	61.761	333.196	293.060	11.206	0.19934	3.09171	7	X
K04P20Q	15.3	0.15	K107N	336.869	234.194	162.699	13.877	0.17814	3.11212	4	X
K04P59A	15.4	0.15	K107N	8.360	200.405	153.388	11.708	0.14296	3.09310	5	X
K04P77B	15.0	0.15	K107N	52.584	137.447	160.288	12.565	0.15649	3.06794	5	X
K04Q27L	14.9	0.15	K107N	358.817	262.167	105.132	8.897	0.14680	3.18969	5	X
K04R01P	15.1	0.15	K107N	354.008	165.862	208.214	13.049	0.23251	3.17772	3	X
K04RL2Q	15.0	0.15	K107N	24.435	86.587	248.704	17.897	0.10344	3.22446	6	X
K05E98Z	16.4	0.15	K107N	244.873	134.546	312.491	6.970	0.07953	2.34591	6	X
K05G59E	18.1	0.15	K107N	323.965	242.760	194.973	16.099	0.60088	2.11061	4	X
K05GK4T	16.3	0.15	K107N	37.367	240.852	34.018	15.483	0.12439	2.62594	4	X
K05J79H	16.9	0.15	K107N	0.020	274.425	46.836	12.953	0.19428	2.67169	4	X
K05J99H	17.0	0.15	K107N	344.898	259.754	102.151	11.397	0.22849	2.58611	3	X
K05JH8N	16.4	0.15	K107N	10.112	92.502	218.639	15.125	0.25901	2.65960	3	X
K05JI1B	15.8	0.15	K107N	19.290	240.723	66.949	10.563	0.22643	2.67764	6	X
K05N73A	15.6	0.15	K107N	326.327	97.811	284.833	13.785	0.16449	2.83793	4	X
K05N78W	16.7	0.15	K107N	26.129	0.958	305.498	13.041	0.18190	2.80455	3	X
K05O01K	17.0	0.15	K107N	356.002	267.264	70.116	8.188	0.36296	2.88449	2	X
K05Q24X	16.5	0.15	K107N	0.445	296.488	28.585	5.392	0.14033	3.01432	4	X
K05QF1Y	17.7	0.15	K107N	255.804	124.842	14.421	12.646	0.43931	1.38122	4	X
K05R06R	18.4	0.15	K107N	336.502	58.860	28.230	6.958	0.69557	2.97577	4	X
K05R24N	15.0	0.15	K107N	354.976	326.616	4.316	11.672	0.21780	3.09555	3	X
K05S92J	16.8	0.15	K107N	18.606	68.121	238.934	0.953	0.19854	3.04206	4	X
K05SA3V	15.4	0.15	K107N	6.988	105.771	237.824	9.759	0.10198	3.02257	3	X
K05SL9C	15.8	0.15	K107N	331.967	165.765	225.991	11.789	0.40517	3.04518	2	X
K05ST3Q	16.1	0.15	K107N	92.435	157.703	141.430	12.844	0.13478	2.67694	2	S
K05T41W	14.8	0.15	K107N	331.721	139.854	232.883	14.757	0.17185	3.10976	3	X
K05U16B	16.8	0.15	K107N	333.420	215.916	157.896	1.551	0.17864	3.08135	4	X
K05U30F	15.4	0.15	K107N	329.641	168.866	226.044	11.212	0.20028	3.07715	4	X
K05U61H	15.3	0.15	K107N	331.166	180.410	212.226	15.214	0.20531	3.07497	4	X
K05U70A	15.3	0.15	K107N	316.063	136.797	264.310	10.090	0.11248	3.02242	4	X
K05U72L	15.4	0.15	K107N	14.302	59.792	268.419	11.253	0.10261	3.06448	6	X
K05U78O	15.7	0.15	K107N	271.383	193.357	260.590	7.274	0.05187	3.10411	4	H
K05UD1E	14.9	0.15	K107N	357.902	111.257	235.822	13.731	0.05458	3.20579	6	X
K05UD8R	14.8	0.15	K107N	63.971	51.625	222.736	16.119	0.09626	3.21826	7	X
K05UH7A	17.0	0.15	K107N	348.398	358.260	8.327	2.074	0.19585	3.05790	2	S
K05UP9C	15.4	0.15	K107N	16.964	101.244	215.931	19.472	0.13297	3.14168	2	X

K05UR3Y	14.6	0.15	K107N	21.535	21.367	281.452	17.296	0.14813	3.09679	6	X
K05UV3P	15.7	0.15	K107N	297.157	345.989	86.973	12.696	0.21845	3.04359	5	X
K05Ui7M	14.8	0.15	K107N	284.314	170.615	264.985	9.618	0.04758	3.14000	8	X
K05Uj7H	15.3	0.15	K107N	326.691	294.051	90.886	10.057	0.13703	3.08498	5	X
K05Un3B	15.3	0.15	K107N	22.731	51.255	261.956	15.881	0.31309	2.98003	4	X
K05V37N	14.8	0.15	K107N	341.670	305.899	68.925	15.932	0.18798	3.10228	6	X
K05V50S	16.0	0.15	K107N	12.888	193.500	146.374	8.324	0.16775	2.97900	5	X
K05W00H	15.4	0.15	K107N	324.137	127.692	252.140	16.165	0.17729	3.09807	3	X
K05W70Z	16.1	0.15	K107N	346.246	93.076	259.355	14.438	0.25291	3.11241	2	X
K05WB7K	14.4	0.15	K107N	152.705	165.664	47.353	20.697	0.12434	3.15682	4	X
K05WE7S	15.4	0.15	K107N	278.245	340.629	118.791	9.348	0.05269	3.09712	5	X
K05X20D	15.2	0.15	K107N	292.744	153.237	281.728	11.189	0.15310	3.21398	2	X
K05XA5Q	16.0	0.15	K107N	44.006	308.063	44.296	1.014	0.21843	3.19504	10	S
K05Y08L	15.3	0.15	K107N	310.473	123.094	291.813	13.444	0.26056	3.11468	2	X
K05Y37G	15.0	0.15	K107N	331.676	115.221	275.067	25.353	0.20128	3.12841	2	X
K06B13K	15.9	0.15	K107N	10.241	301.644	152.360	9.526	0.12291	2.78296	2	S
K06BR5L	17.0	0.15	K107N	16.217	277.981	14.148	5.216	0.20868	2.27595	5	X
K06H25B	18.6	0.15	K107N	44.707	155.431	112.579	2.918	0.19965	2.31429	2	S
K06K42Y	16.6	0.15	K107N	51.257	218.168	65.074	7.160	0.18288	2.27018	6	X
K06KC1D	15.5	0.15	K107N	11.110	303.939	354.754	13.176	0.27282	2.47457	3	X
K06P25V	16.6	0.15	K107N	3.038	9.914	339.504	6.077	0.14294	2.40605	4	X
K06Q06L	16.7	0.15	K107N	13.405	177.345	148.389	9.808	0.25818	2.44208	5	X
K06Q42R	17.3	0.15	K107N	349.814	260.428	76.371	2.854	0.22463	2.53309	3	X
K06Q54J	16.2	0.15	K107N	357.774	267.744	57.280	12.870	0.12665	2.52161	5	X
K06QG6X	15.5	0.15	K107N	353.027	319.566	43.961	12.763	0.18129	2.61582	4	X
K06R89U	17.4	0.15	K107N	7.657	323.765	352.131	3.178	0.24225	2.57845	2	X
K06R90F	17.2	0.15	K107N	317.526	204.373	192.654	14.901	0.08932	2.55354	5	X
K06R95X	17.0	0.15	K107N	51.677	293.894	356.705	2.176	0.04262	2.60434	4	X
K06S27L	15.8	0.15	K107N	238.672	256.070	202.828	21.499	0.05115	2.68114	6	X
K06S57N	16.1	0.15	K107N	12.003	123.134	196.057	28.368	0.20637	2.56876	5	X
K06SC2N	16.1	0.15	K107N	27.468	15.341	300.481	12.553	0.18560	2.55786	4	X
K06SD2X	16.5	0.15	K107N	306.764	173.754	228.949	14.498	0.12197	2.57652	6	X
K06SF4A	18.0	0.15	K107N	349.475	24.033	315.379	3.459	0.35870	2.57676	2	X
K06SI6J	17.3	0.15	K107N	311.220	191.178	211.932	6.297	0.04296	2.59576	2	S
K06SL8B	17.8	0.15	K107N	333.309	16.288	4.927	2.621	0.26362	2.58161	2	X
K06T00B	20.1	0.15	K107N	348.054	180.881	169.359	27.567	0.32472	1.56201	3	X
K06T37K	16.7	0.15	K107N	1.300	115.554	221.963	13.726	0.15892	2.64937	4	X
K06T54P	16.3	0.15	K107N	356.423	106.160	232.212	11.212	0.21560	2.61913	3	X
K06T68X	17.6	0.15	K107N	338.305	213.748	150.585	5.288	0.21384	2.57789	2	S
K06T75T	16.9	0.15	K107N	356.176	280.696	60.477	12.237	0.29830	2.56796	3	X
K06T85K	16.4	0.15	K107N	303.349	43.964	2.329	6.106	0.04070	2.67548	5	X
K06U08M	16.2	0.15	K107N	342.284	143.355	222.706	11.457	0.21381	2.63096	4	X
K06U26H	16.9	0.15	K107N	24.096	279.510	17.325	4.922	0.09477	2.73442	6	X
K06U32X	18.9	0.15	K107N	113.983	106.463	213.168	3.923	0.20216	2.17817	2	S
K06U45L	16.8	0.15	K107N	313.785	323.418	70.120	4.196	0.23134	2.69108	4	X
K06U61P	15.7	0.15	K107N	9.230	296.307	42.153	12.965	0.20638	2.63799	4	X
K06U61S	16.1	0.15	K107N	320.145	152.752	239.509	12.802	0.25797	2.66394	2	X
K06UD7M	15.9	0.15	K107N	296.785	174.368	239.529	14.030	0.17371	2.70967	3	X
K06UH2F	17.5	0.15	K107N	289.945	60.273	4.230	2.565	0.14331	2.71544	2	S
K06UH7W	17.0	0.15	K107N	329.388	281.538	86.571	4.056	0.19385	2.63842	2	X
K06UJ2J	15.9	0.15	K107N	323.445	135.296	249.962	12.166	0.11351	2.63868	4	X
K06UK1V	16.1	0.15	K107N	272.426	75.119	346.564	14.434	0.05388	2.63603	6	X
K06UK2S	15.8	0.15	K107N	56.062	333.448	300.285	12.250	0.15640	2.63031	7	X
K06UK3G	16.7	0.15	K107N	28.638	190.353	115.785	6.421	0.23499	2.54764	7	X
K06UK4M	14.9	0.15	K107N	315.618	87.187	300.206	21.120	0.08450	3.20449	5	X
K06V10Y	17.9	0.15	K107N	315.112	167.798	228.185	2.470	0.24478	2.66282	2	X
K06V12U	15.9	0.15	K107N	324.406	316.919	80.043	13.154	0.18742	2.64133	4	X
K06V73G	16.3	0.15	K107N	353.398	119.443	238.808	3.105	0.35351	2.59298	5	X
K06W53H	15.8	0.15	K107N	328.837	243.106	159.787	13.634	0.21984	2.59331	3	X
K06WD3E	17.7	0.15	K107N	350.178	113.720	245.592	2.722	0.18472	2.64365	2	S
K06WI5N	16.6	0.15	K107N	337.936	275.248	95.718	11.176	0.18449	2.58782	7	X
K06WJ8T	15.0	0.15	K107N	320.803	87.448	312.285	13.731	0.20529	2.61437	5	X
K06X04C	16.4	0.15	K107N	338.244	88.314	280.835	9.931	0.32477	2.64046	3	X
K06X12N	16.6	0.15	K107N	105.661	236.242	73.483	3.183	0.14352	2.40386	5	S
K06X42O	16.1	0.15	K107N	329.960	256.996	108.637	6.138	0.12740	3.06091	4	X
K06X44V	16.5	0.15	K107N	325.285	293.496	75.752	3.067	0.10976	2.90460	6	X
K06X54O	16.6	0.15	K107N	307.291	346.629	74.984	10.422	0.24562	2.72190	5	X
K06X57R	16.0	0.15	K107N	359.136	98.341	251.293	15.173	0.23482	2.67080	5	X
K06X66F	14.9	0.15	K107N	298.097	125.420	296.142	12.507	0.17393	2.80014	4	X
K07B68S	15.1	0.15	K107N	337.528	226.510	149.864	23.924	0.21694	3.11662	5	X
K07C45N	16.5	0.15	K107N	261.961	124.873	328.216	12.056	0.20759	3.06134	2	X
K07D52C	15.4	0.15	K107N	340.706	193.667	180.319	10.544	0.09182	3.49750	3	X
K07S00J	16.6	0.15	K107N	279.277	174.942	306.920	8.191	0.53421	2.01542	5	X
K07T18Y	18.2	0.15	K107N	0.649	301.572	6.230	8.050	0.40948	2.15410	3	X
K07Td8P	18.0	0.15	K107N	269.482	70.009	8.482	6.156	0.10841	2.20631	2	S
K07UB6Z	18.5	0.15	K107N	292.817	9.007	41.293	3.363	0.09891	2.19151	2	S
K07V92C	17.2	0.15	K107N	14.346	280.277	10.263	7.601	0.27029	2.22517	5	X
K07V96A	17.6	0.15	K107N	347.535	296.267	43.740	5.633	0.19514	2.21060	4	X
K07VV2N	17.5	0.15	K107N	331.291	299.452	72.048	7.837	0.13752	2.32960	5	X
K07X22P	16.8	0.15	K107N	306.378	321.053	88.927	8.123	0.20197	2.25033	6	X
K07Y66S	17.4	0.15	K107N	356.721	240.759	116.699	8.381	0.18651	2.32202	5	X
K08A03P	15.4	0.15	K107N	279.394	125.994	299.721	21.911	0.10507	2.56274	5	X
K08A36A	17.3	0.15	K107N	317.865	82.793	298.814	2.048	0.20760	2.42267	2	X
K08A78V	17.4	0.15	K107N	277.467	100.557	322.186	2.445	0.03909	2.59618	2	S
K08B52H	16.3	0.15	K107N	271.682	127.096	311.725	12.777	0.13867	2.59758	2	S

K08C71T	15.3	0.15	K107N	80.222	316.028	298.888	13.947	0.11182	2.86063	5	X
K08C72D	15.5	0.15	K107N	219.002	166.832	337.697	9.080	0.13431	2.68422	3	X
K08CB2C	16.3	0.15	K107N	318.610	255.720	118.292	6.704	0.06136	2.74275	5	X
K08CD2L	17.2	0.15	K107N	189.460	191.956	319.057	2.934	0.02002	2.79584	2	S
K08CF4P	16.1	0.15	K107N	349.702	218.582	127.721	13.211	0.06762	2.83769	5	X
K08D61Q	16.7	0.15	K107N	328.084	349.350	15.389	5.140	0.04194	2.96070	2	S
K08EC7K	15.9	0.15	K107N	210.318	124.380	7.612	9.835	0.03228	3.15260	2	S
K08EC9W	16.8	0.15	K107N	220.601	21.724	108.074	5.257	0.14662	2.78279	2	S
K08F06Q	15.2	0.15	K107N	53.043	133.776	183.345	26.922	0.23276	3.17793	6	X
K08WC8Z	17.0	0.15	K107N	1.012	305.470	31.652	19.774	0.02089	1.99873	5	X
K08YG7R	17.8	0.15	K107N	173.134	291.034	117.224	2.166	0.17427	2.41173	4	S
K08YH2G	15.8	0.15	K107N	40.959	239.783	32.074	15.039	0.27709	2.89365	4	X
K09A25L	17.3	0.15	K107N	61.529	267.326	305.971	0.602	0.13332	2.44247	6	X
K09B04A	16.3	0.15	K107N	156.235	176.685	263.852	11.021	0.13076	2.65235	2	S
K09B04K	17.0	0.15	K107N	184.100	267.368	158.523	7.376	0.21108	2.40225	2	S
K09B05H	16.7	0.15	K107N	139.716	314.737	111.180	11.253	0.09922	3.04677	2	S
K09B06C	16.0	0.15	K107N	145.910	323.703	104.413	15.570	0.07605	2.64105	2	X
K09B10D	17.6	0.15	K107N	133.350	178.441	279.237	4.129	0.12628	2.75166	2	S
K09B17S	16.9	0.15	K107N	330.302	177.347	76.655	6.952	0.09736	2.30834	3	X
K09B26Y	16.9	0.15	K107N	238.176	43.881	334.129	5.359	0.18131	2.32118	2	X
K09B27O	16.6	0.15	K107N	44.119	111.939	89.569	5.405	0.01430	2.75523	2	X
K09B27Q	17.3	0.15	K107N	111.554	107.220	25.556	3.525	0.04125	2.75605	2	S
K09B80T	16.9	0.15	K107N	108.447	90.600	69.173	6.592	0.19103	2.60788	2	S
K09B83X	17.8	0.15	K107N	241.919	238.291	131.733	5.110	0.19571	2.40424	2	S
K09B85O	18.0	0.15	K107N	216.240	231.215	170.797	1.642	0.14244	2.39731	2	S
K09B91B	16.6	0.15	K107N	27.067	281.869	326.049	2.599	0.10778	2.59375	2	S
K09B95T	17.1	0.15	K107N	74.265	89.480	74.112	2.152	0.05113	2.83476	4	X
K09BA9P	16.8	0.15	K107N	67.443	53.165	134.184	11.274	0.09537	3.01023	2	X
K09BB1Q	17.9	0.15	K107N	197.208	85.674	304.353	8.556	0.23519	2.52862	2	X
K09BB6N	16.6	0.15	K107N	129.515	351.823	130.864	14.847	0.05052	2.66110	2	X
K09BC3V	18.4	0.15	K107N	182.124	257.280	198.799	1.018	0.14640	2.36060	2	S
K09BD2E	16.7	0.15	K107N	83.814	354.595	145.004	11.409	0.09224	3.04398	2	S
K09BD3X	17.9	0.15	K107N	203.323	172.041	237.007	0.607	0.18422	2.41699	3	X
K09BD9S	17.1	0.15	K107N	282.346	158.082	152.637	2.086	0.04070	3.10315	2	S
K09BG0H	18.4	0.15	K107N	177.028	260.672	191.243	3.440	0.20583	2.30808	2	X
K09BG6L	17.2	0.15	K107N	183.418	305.495	127.828	5.983	0.10418	2.78321	2	S
K09C14Q	17.8	0.15	K107N	68.532	287.967	333.904	5.217	0.12847	2.17339	5	X
K09C16L	16.6	0.15	K107N	300.290	142.842	173.857	6.661	0.05146	2.71815	2	S
K09C20O	17.5	0.15	K107N	279.194	173.678	178.714	2.654	0.19320	2.29588	2	X
K09C22S	18.0	0.15	K107N	168.011	300.825	162.065	5.442	0.10235	2.41151	2	X
K09C23E	17.1	0.15	K107N	71.990	331.090	266.722	2.849	0.11236	2.21805	6	X
K09C30P	17.2	0.15	K107N	22.609	279.376	11.487	4.803	0.16173	2.31132	6	X
K09C33K	16.8	0.15	K107N	98.325	59.301	130.714	3.931	0.04857	2.55840	5	X
K09C38M	17.3	0.15	K107N	147.657	348.416	132.208	15.125	0.05724	2.47434	2	X
K09C45E	16.6	0.15	K107N	24.949	87.237	140.553	13.024	0.04725	2.98478	2	S
K09C52Y	16.5	0.15	K107N	123.090	326.997	146.970	14.928	0.07234	3.19129	2	X
K09D04B	14.9	0.15	K107N	99.157	321.368	166.126	28.174	0.17043	3.11169	2	S
K09D39W	17.1	0.15	K107N	188.080	80.923	329.498	3.269	0.20998	2.76354	2	S
K09D58J	17.2	0.15	K107N	2.811	195.936	119.884	2.945	0.21146	2.38476	7	X
K09D66Z	17.5	0.15	K107N	139.138	234.279	259.212	1.660	0.07538	2.62772	2	S
K09D76G	16.8	0.15	K107N	64.544	50.069	129.567	5.801	0.10578	3.06066	2	X
K09D82J	17.1	0.15	K107N	62.786	98.199	141.507	6.393	0.07172	2.66438	4	X
K09D85G	17.6	0.15	K107N	263.064	242.926	145.869	6.812	0.11928	2.30756	2	X
K09D88R	16.3	0.15	K107N	61.689	131.194	80.702	4.077	0.05350	2.90459	4	X
K09D88Y	17.9	0.15	K107N	64.698	42.500	207.701	2.234	0.16203	2.34048	3	X
K09D92J	17.6	0.15	K107N	44.589	24.067	261.762	2.677	0.15645	2.29872	3	X
K09D92Y	17.1	0.15	K107N	232.676	284.609	131.302	6.857	0.13296	2.53776	2	S
K09D98Z	17.0	0.15	K107N	59.192	194.299	48.046	3.167	0.14735	2.64239	3	X
K09DA3B	17.4	0.15	K107N	53.429	153.218	124.581	6.810	0.18441	2.37748	2	S
K09DB4U	17.2	0.15	K107N	46.554	276.555	313.152	10.884	0.13491	2.56442	2	X
K09E18D	16.8	0.15	K107N	318.736	345.184	335.941	10.606	0.02059	2.71362	2	S
K09E31B	16.2	0.15	K107N	346.944	267.063	358.366	10.584	0.03056	3.15452	2	S
K09F09L	15.1	0.15	K107N	245.998	192.844	168.458	9.749	0.04839	3.46935	3	X
K09F12R	17.5	0.15	K107N	37.167	289.358	359.722	5.315	0.20060	2.45730	2	S
K09F13V	17.3	0.15	K107N	164.989	126.695	327.690	0.962	0.19135	2.75834	2	S
K09F27C	15.8	0.15	K107N	330.562	296.173	0.450	9.439	0.08312	3.08612	2	X
K09F34E	15.3	0.15	K107N	0.146	107.704	155.749	9.560	0.05628	3.22684	2	S
K09F41J	17.1	0.15	K107N	158.954	35.522	83.660	5.433	0.13664	2.60933	2	S
K09F50F	16.3	0.15	K107N	158.327	13.922	88.231	14.717	0.22240	2.64825	2	S
K09F58E	17.7	0.15	K107N	113.681	318.540	230.702	3.467	0.12595	2.74477	4	S
K09H09E	16.1	0.15	K107N	13.750	190.883	143.567	11.445	0.27444	2.75134	3	X
K09H18C	17.0	0.15	K107N	72.007	55.119	212.460	11.558	0.15004	2.45195	3	X
K09H26V	16.5	0.15	K107N	29.610	251.670	22.082	1.117	0.12674	3.14677	2	S
K09H37C	16.4	0.15	K107N	0.614	310.489	22.312	32.715	0.31435	2.61631	3	X
K09H40A	16.3	0.15	K107N	22.394	247.701	62.438	10.269	0.33137	2.72856	4	X
K09H42L	16.2	0.15	K107N	191.285	58.917	57.416	14.829	0.05163	2.76675	2	S
K09H64U	16.5	0.15	K107N	25.202	101.916	191.325	16.498	0.21311	3.10730	2	S
K09H66G	16.4	0.15	K107N	33.846	221.986	71.698	30.456	0.22842	3.17307	2	X
K09H72Z	15.7	0.15	K107N	15.747	261.419	48.861	29.791	0.16948	2.54591	6	S
K09H75R	17.1	0.15	K107N	11.071	198.490	143.099	9.826	0.17554	2.58063	4	X
K09H92B	16.9	0.15	K107N	161.456	288.552	232.987	1.484	0.07021	2.63243	5	X
K09HA1O	15.9	0.15	K107N	57.059	27.280	233.734	11.303	0.28416	3.18042	2	X
K09HA6T	17.2	0.15	K107N	108.264	16.407	214.602	6.308	0.14964	2.29339	2	S
K09J16B	16.9	0.15	K107N	78.650	72.494	181.579	3.923	0.04187	2.72738	2	S
K09K04E	15.6	0.15	K107N	76.434	171.994	62.720	28.027	0.07189	3.13511	2	S

K09K17H	15.7	0.15	K107N	71.564	149.771	88.037	9.831	0.02381	3.18955	2	X
K09K36A	17.1	0.15	K107N	105.343	101.720	165.527	5.597	0.14129	2.27111	4	S
K09L01X	16.3	0.15	K107N	11.050	131.185	213.434	12.873	0.20705	2.77312	4	X
K09L03T	18.0	0.15	K107N	72.907	199.036	119.140	9.473	0.23690	2.28336	2	S
K09L04E	17.1	0.15	K107N	50.012	189.352	140.026	7.348	0.13884	2.33768	2	S
K09M01A	14.7	0.15	K107N	46.159	63.030	226.152	16.298	0.07945	3.19424	5	X
K09O21W	17.9	0.15	K107N	81.822	82.764	235.414	9.844	0.31973	2.67227	2	S
K09Q07L	15.2	0.15	K107N	42.106	90.429	272.403	8.728	0.08248	3.16758	2	S
K09Q07T	17.4	0.15	K107N	93.514	129.706	181.818	15.578	0.24816	2.64057	2	S
K09Q11R	17.8	0.15	K107N	106.074	188.602	118.366	3.694	0.19119	2.35647	6	S
K09Q14Z	15.9	0.15	K107N	62.800	5.668	344.720	9.292	0.04679	3.10431	2	S
K09Q21N	17.0	0.15	K107N	107.825	157.697	126.478	5.382	0.24613	2.63282	2	S
K09Q30F	17.4	0.15	K107N	52.190	218.511	179.288	6.360	0.16582	2.30362	2	S
K09Q50W	16.1	0.15	K107N	31.627	200.767	173.057	9.880	0.09490	3.08360	2	S
K09R01Y	17.4	0.15	K107N	69.163	166.420	194.710	3.131	0.20748	2.73706	2	S
K09R06C	17.2	0.15	K107N	101.890	228.181	86.064	3.267	0.23369	2.38391	3	S
K09R12H	16.8	0.15	K107N	286.504	354.164	175.514	2.591	0.14551	2.44609	2	S
K09R25S	16.4	0.15	K107N	155.218	229.370	58.312	5.196	0.04169	2.78380	2	S
K09R33W	16.4	0.15	K107N	189.188	228.572	18.232	4.889	0.21080	2.60554	2	X
K09R48O	16.2	0.15	K107N	191.723	222.842	13.986	7.932	0.16433	2.77338	2	S
K09R74K	17.3	0.15	K107N	121.625	261.664	38.012	3.551	0.19173	2.41862	2	S
K09S12U	18.0	0.15	K107N	59.504	55.097	328.987	1.270	0.17107	2.47465	2	X
K09S16O	18.2	0.15	K107N	138.694	308.982	333.394	2.076	0.18031	2.31345	3	X
K09S36C	18.0	0.15	K107N	116.482	79.979	237.297	3.093	0.16652	2.55366	2	S
K09S36H	17.6	0.15	K107N	159.456	15.932	253.745	2.103	0.18692	2.55274	3	S
K09S50R	18.5	0.15	K107N	96.313	150.674	171.224	5.599	0.26238	2.53840	2	X
K09S57S	17.5	0.15	K107N	169.168	34.087	234.705	7.948	0.13932	2.54076	2	S
K09S59R	16.3	0.15	K107N	174.907	18.865	230.842	9.276	0.07089	3.20685	2	S
K09S64S	17.9	0.15	K107N	63.232	199.422	166.552	1.556	0.05995	2.55631	2	S
K09S72Q	16.7	0.15	K107N	17.068	221.137	195.131	2.854	0.12543	2.91947	2	X
K09S81A	17.7	0.15	K107N	87.146	153.661	183.417	2.648	0.11169	2.54171	2	S
K09SA0X	17.3	0.15	K107N	11.750	63.601	0.672	3.855	0.12915	2.89061	3	S
K09SC8U	16.8	0.15	K107N	168.683	216.659	52.362	1.906	0.15805	2.42727	2	S
K09SF7R	17.7	0.15	K107N	349.948	139.774	356.791	5.529	0.18710	2.21011	2	S
K09SG3K	17.3	0.15	K107N	128.067	264.288	23.706	8.834	0.13850	2.79051	2	S
K09SM2L	16.2	0.15	K107N	53.668	21.848	348.512	10.427	0.12321	2.94222	2	S
K09SO2Q	16.0	0.15	K107N	85.850	185.135	131.802	15.528	0.21794	3.06031	3	S
K09SX2K	16.6	0.15	K107N	66.846	185.422	180.173	7.637	0.17153	2.66878	2	S
K09T01C	18.2	0.15	K107N	118.092	118.626	200.123	0.656	0.19674	2.42479	2	S
K09T05V	16.9	0.15	K107N	50.680	209.372	190.174	6.258	0.21252	2.70817	2	S
K09T25J	17.3	0.15	K107N	349.632	113.449	12.865	2.876	0.05722	2.21156	2	X
K09U13W	14.9	0.15	K107N	21.462	229.409	172.908	14.679	0.05256	3.12848	3	S
K09U30J	17.2	0.15	K107N	346.378	85.217	59.419	2.184	0.12006	2.35864	3	X
K09U31Y	16.7	0.15	K107N	103.812	303.576	43.129	1.223	0.06950	3.00283	2	S
K09U36R	17.9	0.15	K107N	115.758	295.184	48.948	3.546	0.11453	2.39480	3	S
K09U37C	17.4	0.15	K107N	121.960	281.416	47.454	3.909	0.11931	2.56116	3	X
K09U58D	17.3	0.15	K107N	23.024	229.312	233.134	5.361	0.09668	2.31306	2	S
K09U97V	17.0	0.15	K107N	207.067	190.259	70.276	3.078	0.13571	2.33386	2	S
K09UB6X	17.5	0.15	K107N	35.337	155.670	290.319	3.735	0.16517	2.39419	3	S
K09UB9M	18.9	0.15	K107N	56.819	31.743	26.525	1.238	0.22309	2.30032	2	S
K09V11Z	16.9	0.15	K107N	348.179	83.970	37.148	7.707	0.04723	2.67853	2	S
K09V16O	17.6	0.15	K107N	174.078	252.092	59.498	6.508	0.18612	2.12447	4	S
K09V33R	16.1	0.15	K107N	351.298	210.394	269.325	7.569	0.08722	2.97161	2	S
K10G23Q	15.1	0.15	K107N	133.296	31.566	46.195	26.899	0.12985	2.72585	2	S
K10G33G	16.1	0.15	K107N	20.548	179.733	11.414	14.165	0.16889	2.61468	2	S
K10G66R	17.2	0.15	K107N	62.581	92.287	39.341	28.274	0.37305	2.60246	2	S
K10G97A	16.6	0.15	K107N	95.820	56.302	64.302	13.857	0.17517	2.80779	2	S
K10GA9X	17.0	0.15	K107N	22.780	126.424	81.055	6.102	0.06573	2.70561	2	S
K10GD0N	17.0	0.15	K107N	338.464	8.194	255.539	0.931	0.03394	2.59479	2	S
K10K45M	16.2	0.15	K107N	7.899	153.535	157.438	5.138	0.23887	2.66362	8	X
K10K49R	16.1	0.15	K107N	343.038	59.530	299.609	11.558	0.30777	2.64889	4	X
K10K63X	15.9	0.15	K107N	10.963	173.079	135.075	9.855	0.22178	2.80904	5	X
K10K79T	16.5	0.15	K107N	1.756	73.802	251.552	10.287	0.31931	2.66408	2	X
K10KC5N	15.3	0.15	K107N	9.634	169.228	148.601	22.986	0.14873	3.14906	3	X
K10L04S	16.7	0.15	K107N	10.876	356.980	314.882	10.909	0.26489	2.36355	4	X
K10L63Y	17.8	0.15	K107N	344.125	350.342	345.035	11.121	0.41317	1.90237	4	X
K10M90B	16.2	0.15	K107N	347.067	111.958	253.683	3.340	0.08811	2.80432	2	S
K10P23X	17.4	0.15	K107N	330.398	218.523	149.122	7.311	0.24970	2.29026	4	X
K10Q01D	17.6	0.15	K107N	300.171	88.114	316.041	1.918	0.19672	2.29400	2	S
K10Q04H	16.0	0.15	K107N	68.937	38.924	223.690	9.522	0.10827	3.12191	2	S

New perturbed one-opposition orbits:

Object	H	G	Epoch	M	Peri.	Node	Incl.	e	a	Arc	C
K09S77E	17.4	0.15	K107N	171.195	209.118	67.168	6.945	0.08853	2.54653	120	S
K09S80V	16.1	0.15	K107N	2.510	66.085	347.703	8.925	0.08822	3.09425	24	S
K09SM8Z	17.6	0.15	K107N	59.139	27.493	17.187	12.225	0.19520	2.55416	125	S
K10CE0P	19.3	0.15	K107N	80.118	189.861	271.861	14.467	0.53772	1.90063	127	X
K10KC3J	15.7	0.15	K107N	85.946	287.111	303.534	27.159	0.12977	2.58137	98	S
K10M22N	15.9	0.15	K107N	353.579	220.789	134.048	15.363	0.28144	3.15146	87	X
K10OA1N	20.5	0.15	K107N	13.068	7.965	251.675	9.305	0.40872	1.62863	44	X
K10AC6K	20.8	0.15	K107N	4.967	320.976	338.340	52.543	0.44719	1.95545	46	X
K10P02P	21.1	0.15	K107N	351.961	14.537	313.795	6.622	0.46939	2.32749	40	X
K10P09L	20.1	0.15	K107N	342.725	49.467	305.732	20.056	0.44857	2.34863	40	X
K10P10M	19.7	0.15	K107N	340.480	59.265	311.671	1.505	0.46219	2.28217	38	X
K10P57D	22.6	0.15	K107N	344.457	46.213	307.422	7.307	0.49160	2.32866	35	X

K10R00B	20.3	0.15	K107N	329.795	260.042	156.033	27.706	0.61942	2.55412	12	X
K10R03S	22.6	0.15	K107N	347.228	155.481	179.429	5.025	0.45382	2.10118	11	X
K10R04J	24.0	0.15	K107N	330.465	39.300	322.479	2.545	0.35392	1.63780	11	X
K10R11T	18.8	0.15	K107N	40.329	17.483	221.712	2.259	0.40691	2.12763	11	X
K10R12C	21.6	0.15	K107N	344.656	38.096	314.441	5.098	0.44631	2.21618	9	X
K10R30U	23.4	0.15	K107N	329.397	215.441	164.019	13.163	0.42976	1.87358	9	X
K10R42J	19.7	0.15	K107N	48.644	249.352	341.369	32.995	0.32200	1.62528	8	X
K10R42K	18.7	0.15	K107N	339.657	294.975	113.265	4.472	0.57435	2.76872	9	X
K10R42M	18.2	0.15	K107N	9.235	274.148	15.168	38.739	0.54270	2.15023	8	X
K10R43K	20.6	0.15	K107N	337.543	170.175	197.287	7.588	0.44075	2.18969	7	X
K10R43L	24.3	0.15	K107N	357.999	0.679	291.019	0.629	0.62168	2.33625	7	S
K10R64K	20.6	0.15	K107N	298.025	54.760	357.937	16.659	0.35408	1.53430	3	X
K10R80T	22.5	0.15	K107N	344.182	347.143	355.759	7.608	0.44895	2.05064	2	X
K10R82M	25.8	0.15	K107N	8.691	83.229	170.839	4.934	0.41706	1.18647	1	X
K10R82O	16.9	0.15	K107N	306.054	66.122	21.800	17.969	0.60280	2.47431	3	K

New one-opposition orbits:

Object	H	G	Epoch	M	Peri.	Node	Incl.	e	a	Arc	C
K09A03J	18.3	0.15	K08BU	351.834	236.609	206.623	7.471	0.09415	2.39744	30	S
K09A04J	18.2	0.15	K0919	18.533	137.230	306.810	6.515	0.10971	2.81732	19	S
K09A05M	18.5	0.15	K0919	14.136	18.500	70.509	2.494	0.12839	2.36674	19	S
K09A07K	16.9	0.15	K08BU	7.798	259.924	160.837	6.250	0.12156	2.47037	30	S
K09A08O	15.9	0.15	K08BU	19.309	238.367	172.227	8.426	0.08100	3.08096	33	S
K09A12X	15.2	0.15	K0919	114.684	226.443	122.486	11.507	0.06502	3.41304	16	S
K09A13Z	17.5	0.15	K0919	306.421	35.653	134.470	4.468	0.04001	2.81828	30	S
K09A14M	17.1	0.15	K0919	55.786	266.552	126.001	8.863	0.19994	2.80634	16	S
K09A20E	16.9	0.15	K08CK	82.335	81.966	305.122	2.913	0.02715	3.02255	25	S
K09A20R	17.9	0.15	K0919	81.909	170.907	193.756	1.965	0.22006	2.42540	16	S
K09A25R	17.7	0.15	K0919	55.308	279.433	126.497	3.928	0.12467	2.39310	43	S
K09A26W	18.0	0.15	K0919	25.396	157.147	279.873	2.599	0.21447	2.55959	30	S
K09A31K	17.7	0.15	K0919	52.340	254.189	151.466	2.412	0.17281	2.47577	17	S
K09A35R	18.1	0.15	K08CK	130.045	47.951	284.163	6.843	0.12190	2.18160	27	S
K09A35S	17.0	0.15	K091T	77.132	90.480	307.104	5.663	0.08370	2.90957	30	S
K09A37A	17.0	0.15	K08CK	347.432	22.929	93.256	9.665	0.06795	3.01719	47	S
K09A39U	19.0	0.15	K08CK	334.366	338.172	164.615	1.285	0.12214	2.31830	29	S
K09A40K	15.8	0.15	K08CK	79.724	258.579	125.859	11.006	0.11762	3.50805	29	S
K09A41O	16.6	0.15	K0919	357.704	352.721	101.987	13.125	0.15572	2.65611	17	S
K09B07U	18.4	0.15	K0919	84.089	83.149	304.016	18.450	0.06138	1.98176	21	S
K09B15W	18.0	0.15	K0919	288.470	67.273	130.322	6.724	0.11643	2.52131	30	S
K09B16S	18.0	0.15	K08CK	65.387	227.779	157.732	3.401	0.22351	2.44156	18	S
K09B17C	17.6	0.15	K0919	26.059	293.853	138.069	2.784	0.23329	3.10830	24	S
K09B18K	18.8	0.15	K08CK	31.095	309.969	115.908	8.065	0.10660	2.30569	27	S
K09B19B	17.5	0.15	K0919	322.203	49.908	116.199	14.664	0.20332	2.63826	16	S
K09B19E	17.1	0.15	K08CK	318.175	56.817	105.928	6.525	0.09684	3.18686	27	S
K09B20X	17.8	0.15	K08CK	329.851	34.040	117.453	8.977	0.15865	2.77209	28	S
K09B22D	17.9	0.15	K0919	89.520	276.390	101.942	7.316	0.20677	2.30082	17	S
K09B25Z	18.3	0.15	K0919	53.175	347.788	66.266	2.412	0.13000	2.56588	22	S
K09B26B	17.3	0.15	K0919	42.999	343.786	89.562	5.325	0.05562	2.75398	20	S
K09B27F	17.4	0.15	K0919	131.050	12.987	325.921	8.584	0.15681	2.25353	20	S
K09B28U	16.5	0.15	K08CK	81.800	252.796	119.279	17.284	0.22188	3.15563	29	S
K09B29J	16.8	0.15	K08CK	117.116	235.865	112.030	8.548	0.15695	2.69998	29	S
K09B29P	16.4	0.15	K0919	261.837	285.420	317.958	9.932	0.20138	3.08190	20	S
K09B30U	16.7	0.15	K091T	99.851	59.411	315.864	10.409	0.14373	3.06997	34	S
K09B32M	16.9	0.15	K0919	248.689	128.029	122.750	3.438	0.13922	2.70190	60	S
K09B43Q	18.8	0.15	K0919	289.332	73.494	123.562	23.723	0.08319	1.91013	28	S
K09B47W	19.3	0.15	K0919	349.655	187.734	308.797	5.452	0.16413	2.33728	15	S
K09B59G	16.0	0.15	K08CK	237.260	126.690	111.713	16.927	0.05918	3.09575	45	S
K09B62X	18.3	0.15	K08CK	12.673	342.051	112.793	4.994	0.15465	2.53887	35	S
K09B64F	17.8	0.15	K0919	18.454	134.359	329.969	11.550	0.13486	2.55589	50	S
K09B67J	18.0	0.15	K092I	289.183	39.589	199.733	1.608	0.16396	2.40718	70	S
K09B67U	18.7	0.15	K091T	39.678	114.490	339.276	1.025	0.13527	2.33686	25	S
K09B69Q	15.8	0.15	K091T	221.206	321.727	306.048	21.459	0.11174	3.17682	39	S
K09B70J	17.1	0.15	K08CK	2.578	1.447	109.216	14.449	0.12492	2.76137	70	S
K09B74T	15.6	0.15	K0919	1.909	152.743	321.204	10.507	0.03355	3.03996	25	S
K09B89S	16.6	0.15	K0919	303.614	81.774	134.021	15.024	0.26167	3.17358	30	S
K09B90F	17.0	0.15	K092I	71.506	279.819	141.034	4.761	0.06439	2.76324	50	S
K09B92S	16.9	0.15	K091T	351.233	12.768	136.430	6.278	0.06606	2.88777	27	S
K09B94R	16.9	0.15	K092I	42.122	242.464	200.814	0.420	0.22264	3.02478	50	S
K09B94W	18.7	0.15	K091T	44.948	299.128	142.127	1.891	0.15228	2.42514	20	S
K09BA0J	19.7	0.15	K091T	0.837	343.493	144.466	2.407	0.12393	2.31696	29	S
K09BA0W	18.1	0.15	K091T	255.021	55.325	189.383	0.851	0.09592	2.29200	23	S
K09BA5P	17.9	0.15	K091T	335.303	26.121	149.020	13.722	0.10937	2.92699	34	S
K09BB0M	18.4	0.15	K091T	3.021	48.590	98.206	3.072	0.14352	2.52848	30	S
K09BB7O	17.4	0.15	K091T	14.665	104.059	18.792	5.493	0.14270	3.19381	30	S
K09BB7V	16.1	0.15	K0919	173.715	337.855	327.215	6.429	0.08499	2.86739	45	S
K09BB7Y	16.6	0.15	K0919	265.483	107.590	129.608	14.244	0.15427	2.63573	20	S
K09BB7Z	17.5	0.15	K091T	92.302	247.329	127.294	2.746	0.21188	2.56188	21	S
K09BC6L	17.9	0.15	K091T	78.972	274.376	125.997	2.118	0.17966	2.46858	16	S
K09BC9F	18.4	0.15	K091T	352.785	48.952	103.037	3.055	0.14334	2.40235	43	S
K09BC9H	17.2	0.15	K091T	93.753	46.112	351.471	5.498	0.12373	2.71776	29	S
K09BD2J	16.6	0.15	K0919	30.704	285.540	150.371	9.608	0.14571	3.10611	30	S
K09BD3N	16.6	0.15	K091T	332.802	228.474	298.367	1.584	0.14033	3.15794	28	S
K09BD3P	16.4	0.15	K0919	53.532	120.547	307.845	8.394	0.05417	3.00003	71	S
K09BD6A	16.6	0.15	K091T	168.681	172.861	148.180	5.292	0.10277	2.77298	21	S
K09BD7N	16.6	0.15	K091T	130.054	42.174	318.575	11.149	0.05236	3.09880	28	S

K09BD8H	18.5	0.15	K091T	22.006	91.861	13.825	1.320	0.14722	2.39534	22	S
K09BD9N	18.9	0.15	K091T	50.779	280.031	143.596	3.230	0.18933	2.46592	28	S
K09BE3S	17.0	0.15	K091T	217.620	152.525	136.711	10.168	0.14282	2.69340	29	S
K09BE5W	18.0	0.15	K091T	326.683	218.964	326.925	12.459	0.17666	2.67137	25	S
K09BE8E	18.8	0.15	K092I	10.674	200.378	298.120	4.146	0.18474	2.31685	61	S
K09BE9K	18.4	0.15	K092I	352.781	221.536	308.370	5.764	0.26188	2.56515	62	S
K09BF0K	16.3	0.15	K092I	343.710	221.335	317.318	3.063	0.10079	3.05968	57	S
K09BF5H	16.2	0.15	K091T	21.227	134.981	339.380	8.814	0.01508	3.45079	58	S
K09BF5U	18.2	0.15	K0919	318.785	199.694	340.556	2.870	0.14626	2.28198	19	S
K09BF5Z	18.6	0.15	K0919	23.432	109.907	345.673	3.235	0.14881	2.44588	36	S
K09BF6T	18.7	0.15	K091T	28.930	135.087	329.970	5.619	0.19756	2.36780	27	S
K09BF9Q	16.7	0.15	K091T	346.344	26.261	147.225	1.932	0.09329	3.09319	19	S
K09BG2H	17.3	0.15	K0919	11.086	46.001	76.520	2.773	0.02197	2.57970	16	S
K09BG4F	16.9	0.15	K0919	283.594	161.196	76.173	3.219	0.21979	3.01756	20	S
K09BG5A	18.7	0.15	K091T	338.012	165.678	0.572	4.861	0.10030	2.32033	28	S
K09BI9H	16.3	0.15	K0919	32.777	299.606	102.925	15.158	0.20519	2.94593	42	S
K09C02G	16.9	0.15	K0919	39.000	334.882	111.255	6.491	0.05106	2.63699	35	S
K09C03N	17.3	0.15	K091T	40.133	359.246	76.520	5.261	0.19328	2.55704	15	S
K09C06A	18.1	0.15	K091T	56.921	235.046	129.990	3.971	0.47181	2.77225	30	S
K09C06E	17.5	0.15	K091T	271.383	89.011	124.886	5.951	0.07015	2.79160	30	S
K09C08G	16.9	0.15	K0919	110.642	65.968	294.351	14.629	0.06837	3.01226	43	S
K09C11N	17.7	0.15	K091T	273.358	305.086	289.724	5.772	0.03894	2.19363	40	S
K09C11Z	17.1	0.15	K091T	13.202	201.888	285.444	5.781	0.06501	2.35860	26	S
K09C12C	16.7	0.15	K091T	227.090	335.274	310.284	8.880	0.06605	3.10626	19	S
K09C12E	16.8	0.15	K092I	129.714	61.787	322.584	5.661	0.08857	2.70119	56	S
K09C12X	17.7	0.15	K0919	9.000	180.073	306.629	14.317	0.02724	2.61550	14	S
K09C13S	16.8	0.15	K091T	306.373	91.426	116.294	15.874	0.19496	2.66576	55	S
K09C14P	18.5	0.15	K0919	45.855	137.790	284.959	3.886	0.20367	2.31536	33	S
K09C18H	16.6	0.15	K0919	260.390	305.637	305.259	12.559	0.13968	2.72315	15	S
K09C18Y	18.0	0.15	K091T	305.641	285.427	290.463	3.328	0.13458	2.57327	26	S
K09C19F	17.5	0.15	K091T	308.837	261.935	306.010	5.112	0.10408	2.25972	26	S
K09C23Q	16.4	0.15	K091T	91.544	251.095	147.938	12.514	0.06681	2.93463	57	S
K09C25J	17.9	0.15	K091T	282.988	198.764	41.123	2.093	0.16095	2.35398	27	S
K09C26W	15.8	0.15	K091T	75.309	290.877	133.946	11.301	0.07723	3.11931	35	S
K09C27D	17.2	0.15	K091T	95.227	271.639	125.766	6.895	0.12905	2.40561	28	S
K09C28E	17.3	0.15	K091T	332.344	41.288	138.411	11.234	0.08446	3.08939	28	S
K09C31H	18.9	0.15	K091T	352.798	54.673	104.284	2.889	0.15630	2.31886	29	S
K09C32A	17.9	0.15	K092I	287.962	240.295	4.736	2.132	0.14202	2.36124	43	S
K09C32B	17.5	0.15	K091T	75.053	280.673	137.564	4.331	0.16229	2.44406	27	S
K09C32Y	17.8	0.15	K091T	25.817	96.191	10.859	2.601	0.26863	2.77252	30	S
K09C33Q	16.0	0.15	K092I	345.250	13.302	143.296	3.821	0.01328	3.41388	42	S
K09C37X	16.8	0.15	K091T	5.938	212.595	267.180	13.043	0.09433	2.52993	15	S
K09C41B	17.5	0.15	K091T	22.926	326.047	138.634	15.055	0.07730	2.71678	32	S
K09C43B	17.0	0.15	K091T	114.228	226.551	138.667	5.645	0.13267	2.71054	16	S
K09C51Z	17.7	0.15	K0919	333.633	24.162	140.266	8.509	0.13277	2.58810	49	S
K09C52F	18.3	0.15	K092I	280.721	86.292	143.584	4.918	0.05967	2.36424	14	S
K09D02V	17.2	0.15	K092I	216.902	326.128	332.316	6.755	0.11515	2.31640	63	S
K09D11H	17.2	0.15	K092I	17.124	16.971	121.085	9.756	0.17984	2.84837	27	S
K09D15M	17.4	0.15	K092I	355.102	151.104	3.778	3.326	0.17854	2.67994	64	S
K09D25E	17.7	0.15	K092I	38.763	346.835	120.793	1.961	0.07083	2.60093	28	S
K09D25L	17.1	0.15	K091T	58.326	295.754	144.226	12.529	0.08284	2.66543	29	S
K09D27F	17.2	0.15	K092I	286.320	79.419	152.671	10.106	0.03699	3.17049	24	S
K09D29E	17.6	0.15	K092I	147.297	212.476	161.882	6.673	0.05289	2.70727	24	S
K09D35P	17.0	0.15	K092I	28.036	317.145	176.766	9.047	0.25539	3.45853	30	S
K09D36O	17.8	0.15	K091T	18.306	300.798	177.016	2.256	0.16356	2.26274	21	S
K09D38V	17.2	0.15	K092I	135.256	228.917	157.982	2.792	0.02731	2.61765	46	S
K09D40E	17.7	0.15	K092I	6.277	37.244	114.789	7.992	0.14686	2.34846	24	S
K09D42R	17.5	0.15	K092I	280.341	268.059	333.332	6.635	0.05657	2.26277	35	S
K09D43G	16.7	0.15	K092I	67.827	346.266	91.107	6.155	0.16182	2.57557	25	S
K09D43Z	15.9	0.15	K091T	48.441	128.005	327.370	8.891	0.05292	2.99259	28	S
K09D52C	17.0	0.15	K091T	270.567	325.056	266.084	1.392	0.07350	3.06297	27	S
K09D52M	17.0	0.15	K092I	311.249	229.265	348.867	8.610	0.28385	2.85486	24	S
K09D52T	17.1	0.15	K092I	67.355	77.413	348.809	9.589	0.16853	3.01311	27	S
K09D53U	18.2	0.15	K091T	305.049	129.056	90.102	3.229	0.16180	2.34374	25	S
K09D57L	16.9	0.15	K092I	280.376	151.387	129.337	3.153	0.31646	3.12539	25	S
K09D59L	16.6	0.15	K093A	284.034	221.456	41.644	3.308	0.14665	2.60382	33	S
K09D61T	19.2	0.15	K093A	38.340	98.021	16.162	4.229	0.21444	2.35844	32	S
K09D62O	16.5	0.15	K092I	41.800	317.037	147.082	12.356	0.10414	3.12128	50	S
K09D65C	16.2	0.15	K093A	199.522	165.375	176.540	17.861	0.05063	2.88104	35	S
K09D69B	16.3	0.15	K091T	174.612	173.361	108.504	8.904	0.20778	1.95761	26	S
K09D70T	16.8	0.15	K093A	135.529	208.742	164.301	7.168	0.18262	2.77411	23	S
K09D71D	17.2	0.15	K091T	23.968	181.930	285.552	1.956	0.20739	2.97900	31	S
K09D71L	17.4	0.15	K092I	327.129	185.808	8.185	2.623	0.10822	2.41665	46	S
K09D72V	17.7	0.15	K092I	298.784	269.005	321.515	0.952	0.12898	2.58231	27	S
K09D73F	15.6	0.15	K091T	157.947	196.652	165.145	11.846	0.10334	2.99463	31	S
K09D74K	17.9	0.15	K092I	322.485	82.595	119.868	2.007	0.11592	2.39070	54	S
K09D77M	17.3	0.15	K0919	84.541	83.098	322.601	8.918	0.08746	2.20629	55	S
K09D78K	16.7	0.15	K091T	328.867	59.665	128.414	11.042	0.13778	3.01214	42	S
K09D78W	18.4	0.15	K092I	3.641	28.070	120.837	6.090	0.17040	2.44786	23	S
K09D84C	16.9	0.15	K093A	287.615	241.358	12.517	6.646	0.08309	2.97035	28	S
K09D86N	19.0	0.15	K092I	29.115	143.576	333.012	6.198	0.24384	2.41271	35	S
K09D87A	16.4	0.15	K091T	68.436	269.582	181.491	8.794	0.05426	3.10242	31	S
K09D87X	16.8	0.15	K092I	339.079	95.641	103.965	8.100	0.05622	2.43957	19	S
K09D94R	18.6	0.15	K093A	338.211	94.479	114.745	5.186	0.16302	2.36880	25	S
K09D94X	18.9	0.15	K093A	27.859	84.836	55.417	3.727	0.16925	2.48802	27	S

K09D96G	17.5	0.15	K092I	341.110	222.879	304.346	2.202	0.14088	2.78913	39	S
K09D96S	17.3	0.15	K092I	316.238	51.568	151.051	14.046	0.08241	2.69376	49	S
K09D97T	17.7	0.15	K093A	18.086	43.944	102.271	3.113	0.13370	2.38160	29	S
K09D98S	16.4	0.15	K093A	294.723	150.005	102.159	4.851	0.11787	3.11201	31	S
K09DA6S	18.0	0.15	K093A	296.522	48.904	200.786	1.950	0.04271	2.36668	23	S
K09DA7E	17.8	0.15	K093A	111.954	266.097	145.280	6.458	0.09822	2.37698	26	S
K09DB5S	16.8	0.15	K092I	314.779	54.373	151.955	13.509	0.06021	2.73346	17	S
K09DB6U	16.8	0.15	K092I	55.612	355.459	97.189	1.064	0.15383	2.97997	20	S
K09DB6Z	17.1	0.15	K092I	24.736	351.891	133.710	1.467	0.20835	2.89545	20	S
K09DD2B	17.6	0.15	K093A	19.686	128.104	16.520	8.314	0.10083	2.24015	68	S
K09E05B	17.1	0.15	K093A	345.646	185.057	6.148	15.377	0.20812	3.18859	26	S
K09E05N	17.6	0.15	K091T	298.904	116.079	101.237	6.021	0.10251	2.64944	29	S
K09E06X	16.7	0.15	K091T	340.579	64.442	103.252	9.048	0.05101	3.07097	31	S
K09E07U	16.1	0.15	K092I	83.917	53.046	12.416	9.721	0.10711	3.00417	45	S
K09E13H	17.3	0.15	K092I	320.880	287.471	282.383	10.332	0.25652	2.54446	42	S
K09E13T	18.1	0.15	K092I	1.921	217.650	301.142	1.407	0.13974	2.33846	49	S
K09E17D	17.9	0.15	K092I	356.533	42.941	118.077	5.806	0.17193	2.32724	44	S
K09E17R	17.0	0.15	K092I	316.122	67.921	145.987	8.938	0.12201	2.84906	58	S
K09E17T	17.5	0.15	K092I	127.261	223.142	161.670	14.190	0.11247	2.61982	28	S
K09E19G	17.6	0.15	K092I	320.825	35.091	155.232	9.361	0.02744	2.26133	44	S
K09F05S	16.8	0.15	K093A	109.247	234.929	163.576	2.546	0.13774	2.87101	16	S
K09F06N	18.2	0.15	K093A	170.051	186.386	165.325	18.739	0.04584	1.82163	33	S
K09F09X	18.0	0.15	K093A	356.312	184.644	353.457	2.833	0.13356	2.32982	22	S
K09F12E	17.1	0.15	K093A	200.254	307.338	22.212	4.259	0.09122	2.76353	16	S
K09F16K	16.4	0.15	K092I	38.643	306.064	167.213	9.278	0.07381	3.12363	50	S
K09F22L	17.9	0.15	K093U	316.741	236.433	13.949	4.514	0.15228	2.20716	40	S
K09F27K	17.9	0.15	K093U	20.593	146.759	12.039	13.333	0.14566	2.65353	59	S
K09F30A	17.7	0.15	K093A	309.409	219.000	25.351	1.592	0.14324	2.42809	54	S
K09F30F	17.8	0.15	K093A	69.120	302.795	143.848	7.203	0.18863	2.53943	32	S
K09F38G	18.2	0.15	K092I	6.281	68.203	81.251	3.426	0.17415	2.35968	42	S
K09F40M	17.1	0.15	K093A	14.576	82.425	59.320	8.086	0.23455	2.73156	27	S
K09F42C	17.9	0.15	K093U	282.184	112.528	170.797	14.008	0.11026	2.61626	21	S
K09F49Q	16.0	0.15	K093A	93.247	279.531	155.633	11.345	0.08164	3.21010	32	S
K09F54J	18.6	0.15	K093U	26.903	120.116	36.393	8.977	0.13881	2.35031	40	S
K09F58W	17.2	0.15	K093U	351.633	11.204	188.484	12.793	0.16282	3.03348	58	S
K09F60E	15.6	0.15	K092I	33.333	212.509	268.534	7.641	0.10860	3.17094	28	S
K09F60L	18.5	0.15	K092I	343.720	202.007	354.315	4.228	0.19476	2.60154	35	S
K09F77L	16.9	0.15	K093U	38.047	300.029	200.362	12.643	0.18762	2.62819	37	S
K09H03R	16.7	0.15	K093U	345.739	111.300	96.210	7.569	0.03485	2.89431	17	S
K09H08Q	16.6	0.15	K093U	47.300	106.958	31.227	11.951	0.13874	2.67832	32	S
K09H13V	16.0	0.15	K093U	22.033	82.594	95.065	13.021	0.07005	2.72989	30	S
K09H14P	17.0	0.15	K093U	277.276	149.729	136.183	7.243	0.11087	2.37307	18	S
K09H29H	17.6	0.15	K093U	119.642	230.194	190.246	26.159	0.14403	1.94171	36	S
K09H31E	18.3	0.15	K093U	13.784	346.472	187.180	7.714	0.18692	2.40243	45	S
K09H34N	16.3	0.15	K093U	61.609	274.541	205.158	15.123	0.20755	3.15096	60	S
K09H37L	16.9	0.15	K094J	292.498	251.211	43.047	11.525	0.0930	2.38458	60	S
K09H37Y	16.8	0.15	K093U	335.206	67.834	152.321	6.001	0.06454	3.21101	29	S
K09H38B	18.2	0.15	K093A	339.100	112.916	97.203	5.992	0.10797	2.33581	51	S
K09H38F	18.2	0.15	K094J	340.426	109.669	110.720	5.541	0.07560	2.36804	11	S
K09H47J	19.2	0.15	K093U	331.683	73.194	162.775	5.835	0.22810	2.31512	30	S
K09H49U	17.5	0.15	K093U	244.444	252.876	61.509	10.361	0.06562	2.54507	21	S
K09H62J	18.4	0.15	K094J	344.501	15.626	218.412	2.171	0.14246	2.36247	26	S
K09H69K	16.3	0.15	K094J	64.838	291.822	214.043	11.299	0.04969	3.24791	45	S
K09H69X	18.8	0.15	K094J	92.830	258.045	217.714	20.366	0.06862	1.94905	22	S
K09H71E	16.0	0.15	K094J	272.052	270.838	41.920	15.492	0.07307	3.16268	26	S
K09H75H	16.6	0.15	K093U	51.910	53.464	92.221	5.140	0.07627	2.74743	42	S
K09H75O	18.8	0.15	K094J	45.127	318.412	205.474	19.985	0.08795	1.88660	64	S
K09H78N	17.0	0.15	K093U	311.545	175.916	77.640	4.535	0.06086	3.10649	32	S
K09H81F	15.9	0.15	K0959	28.015	47.512	146.855	6.712	0.30046	3.64491	30	S
K09H81P	16.5	0.15	K0959	270.963	95.744	236.968	2.467	0.04524	2.96421	33	S
K09H90L	15.9	0.15	K093U	29.751	329.825	201.439	15.975	0.08372	3.13782	37	S
K09H91Z	17.8	0.15	K0959	13.675	175.186	34.410	4.060	0.12648	2.74784	32	S
K09H93Z	18.2	0.15	K094J	333.339	204.959	53.392	5.714	0.23011	2.35112	20	S
K09J06F	16.5	0.15	K0959	67.744	70.124	85.257	16.911	0.07102	2.98414	32	S
K09K09Z	17.7	0.15	K0959	335.872	175.529	90.090	7.709	0.10418	2.41268	51	S
K09K10M	16.2	0.15	K0959	4.126	129.305	102.250	4.214	0.12869	3.02936	67	S
K09K21H	18.5	0.15	K0959	313.550	222.768	72.189	3.850	0.18807	2.35682	16	S
K09K28E	17.7	0.15	K0959	324.853	83.889	200.336	7.155	0.13152	2.28966	30	S
K09K28Q	18.5	0.15	K0959	320.126	143.569	148.251	4.762	0.15086	2.20808	16	S
K09K36E	15.5	0.15	K0959	343.863	171.505	91.468	13.748	0.12507	3.11856	15	S
K09K36H	17.2	0.15	K095T	300.902	241.250	82.334	8.452	0.16205	2.26259	22	S
K09K36K	16.9	0.15	K096I	75.348	278.890	247.449	19.757	0.04731	1.87107	62	S
K09M03E	17.1	0.15	K096I	342.396	43.748	275.706	5.056	0.20154	2.65498	61	S
K09M03J	15.5	0.15	K095T	91.661	270.082	227.378	26.691	0.14253	2.66674	23	S
K09O00D	16.4	0.15	K0978	346.412	18.027	297.392	10.601	0.19982	3.09495	40	S
K09O00E	17.9	0.15	K097S	356.991	225.505	82.332	23.322	0.10160	1.82678	26	S
K09O00Q	17.3	0.15	K096I	327.097	51.967	286.413	22.783	0.25045	2.28667	32	S
K09O03H	16.5	0.15	K0978	7.225	351.335	294.743	6.242	0.23212	2.69548	37	S
K09O04M	17.6	0.15	K098H	17.055	124.237	165.102	2.874	0.22697	2.40277	65	S
K09O06O	16.2	0.15	K097S	10.134	149.205	150.317	11.772	0.22516	3.06726	32	S
K09O17C	15.8	0.15	K098H	343.631	116.251	234.401	10.066	0.09887	3.07776	54	S
K09O22X	15.7	0.15	K097S	325.432	301.814	53.870	14.872	0.20256	3.16220	23	S
K09P03D	17.2	0.15	K097S	344.401	85.470	249.599	5.632	0.13850	2.39829	20	S
K09P06G	16.1	0.15	K097S	25.146	226.208	48.378	13.208	0.15300	2.60923	56	S
K09P07P	18.7	0.15	K097S	2.047	0.497	313.885	10.538	0.24833	2.34085	15	S

K09P07X	17.5	0.15	K098H	321.741	214.224	162.149	14.592	0.11894	2.47908	37	S
K09P11B	17.6	0.15	K097S	4.452	175.169	136.126	6.092	0.19427	2.61640	90	S
K09Q02E	18.0	0.15	K097S	314.249	83.907	295.978	18.712	0.13624	1.90642	35	S
K09Q08W	17.3	0.15	K098H	0.838	352.242	343.432	6.216	0.12292	2.46562	32	S
K09Q09N	17.3	0.15	K098H	17.911	146.205	148.296	21.646	0.27028	3.06075	56	S
K09Q27H	15.6	0.15	K098H	1.359	346.156	0.368	11.158	0.11361	3.14636	26	S
K09Q29M	18.0	0.15	K098H	341.784	109.378	255.964	6.180	0.20678	2.56462	25	S
K09Q31S	16.7	0.15	K098H	11.013	359.632	306.576	6.713	0.23821	2.85046	147	S
K09Q38J	17.1	0.15	K0996	12.011	6.361	321.276	15.392	0.21625	2.67502	23	S
K09Q41Z	17.8	0.15	K0996	21.026	314.636	356.771	7.211	0.18948	2.29860	26	S
K09R05Q	18.0	0.15	K09AG	32.601	106.065	229.480	2.705	0.18736	2.20823	93	S
K09R06K	15.9	0.15	K098H	184.606	196.885	319.377	9.812	0.05073	3.02423	33	S
K09R23S	16.1	0.15	K0996	266.026	99.244	355.371	20.640	0.17786	2.76295	22	S
K09R26Y	16.0	0.15	K099Q	40.589	107.000	185.727	21.986	0.18846	3.20516	92	S
K09R55N	16.3	0.15	K099Q	334.087	352.874	64.898	3.380	0.13014	3.20290	37	S
K09S02S	17.0	0.15	K099Q	315.011	212.289	206.790	10.256	0.11911	2.97507	38	S
K09S02W	18.7	0.15	K099Q	44.330	52.710	241.891	3.317	0.24499	2.29473	38	S
K09S05U	17.9	0.15	K099Q	344.971	22.839	10.689	8.546	0.21411	2.74129	29	S
K09S12N	19.4	0.15	K0996	12.118	346.435	347.407	2.715	0.21063	2.22903	32	S
K09S14E	18.3	0.15	K098H	285.647	176.344	264.500	2.420	0.14460	2.37515	33	S
K09S14U	17.8	0.15	K0996	41.431	29.981	276.823	3.611	0.10089	2.72182	54	S
K09S17F	17.2	0.15	K098H	345.225	176.415	185.533	3.532	0.11013	2.79206	35	S
K09S17H	17.2	0.15	K0996	314.831	75.989	316.505	5.151	0.04851	2.36445	29	S
K09S18Z	16.9	0.15	K0996	177.882	355.180	186.557	4.291	0.12768	2.61426	58	S
K09S19B	16.8	0.15	K0996	295.128	217.829	207.839	1.573	0.06257	2.89374	66	S
K09S23S	16.9	0.15	K0996	60.395	109.917	166.401	6.633	0.07904	2.73519	25	S
K09S41H	16.6	0.15	K099Q	110.470	244.016	347.797	3.056	0.16558	2.76062	31	S
K09S41L	18.0	0.15	K099Q	314.860	107.598	313.306	0.593	0.17357	2.46278	54	S
K09S52H	19.5	0.15	K099Q	337.876	20.635	21.703	2.901	0.19780	2.31274	28	S
K09S58W	17.0	0.15	K099Q	275.599	224.915	260.908	4.236	0.17104	2.54144	34	S
K09S61X	17.1	0.15	K099Q	311.647	70.577	342.844	8.018	0.11678	2.88395	22	S
K09S68T	17.0	0.15	K098H	2.467	154.180	196.769	10.427	0.09818	3.09330	33	S
K09S70C	16.2	0.15	K0996	76.782	86.613	192.888	11.409	0.03868	3.15993	58	S
K09S70G	18.1	0.15	K099Q	349.080	35.673	341.588	3.869	0.09462	2.54697	36	S
K09S73G	17.0	0.15	K099Q	277.186	269.428	187.820	10.384	0.10490	3.00227	31	S
K09S78X	15.8	0.15	K09AG	324.508	89.789	343.761	12.026	0.27370	3.18826	93	S
K09S81H	17.9	0.15	K0996	355.269	176.534	178.806	5.773	0.15088	2.74738	23	S
K09S98U	16.8	0.15	K098H	22.546	354.033	302.195	13.461	0.24014	2.56954	38	S
K09SA1B	16.8	0.15	K09AG	343.371	185.375	226.547	19.264	0.25971	3.12268	83	S
K09SB7X	17.1	0.15	K099Q	157.767	352.825	218.370	6.281	0.09567	2.54409	27	S
K09SE4L	16.6	0.15	K0996	126.528	50.763	169.142	6.557	0.12397	2.74828	37	S
K09SF1M	16.9	0.15	K099Q	24.598	143.596	196.745	7.552	0.06205	2.78977	26	S
K09SF9A	17.5	0.15	K099Q	27.724	103.689	249.021	4.863	0.07623	2.75259	31	S
K09SG3J	16.4	0.15	K099Q	67.826	250.708	21.846	9.728	0.23888	3.07412	27	S
K09SG4J	17.5	0.15	K0996	34.574	272.568	72.405	2.673	0.07168	2.88641	31	S
K09SG9G	16.2	0.15	K099Q	356.440	318.868	54.146	5.758	0.08960	2.79416	23	S
K09SI1K	18.0	0.15	K0996	9.098	341.342	356.705	14.785	0.25138	2.40270	41	S
K09SL1X	17.0	0.15	K099Q	66.476	0.305	292.595	0.162	0.17956	3.16083	34	S
K09SL3L	16.3	0.15	K09B5	81.176	42.868	229.715	22.264	0.20816	2.44309	88	S
K09SN5U	18.7	0.15	K099Q	42.743	259.074	58.870	2.332	0.17437	2.45301	35	S
K09SO5P	16.6	0.15	K0996	29.970	227.489	67.001	13.456	0.26130	2.58548	39	S
K09SO8H	13.6	0.15	K09AG	2.440	359.150	23.532	7.329	0.04001	5.34804	63	S
K09SQ8V	18.4	0.15	K09AG	339.848	24.375	20.162	2.907	0.16432	2.42240	48	S
K09SQ9K	16.8	0.15	K099Q	47.060	273.234	36.172	1.325	0.17339	3.14923	32	S
K09SQ9R	18.8	0.15	K099Q	29.939	303.622	25.338	2.714	0.19786	2.32739	41	S
K09SR6X	17.2	0.15	K09AG	62.864	256.308	30.548	5.655	0.22763	2.31167	47	S
K09SS6D	17.3	0.15	K0996	323.699	9.312	38.720	0.956	0.12670	3.17040	52	S
K09SS8C	17.2	0.15	K09AG	2.846	161.482	218.296	10.648	0.13250	3.11934	54	S
K09ST5B	18.2	0.15	K099Q	330.902	62.662	342.610	1.821	0.18022	2.38630	25	S
K09SW3Z	18.3	0.15	K099Q	335.604	27.289	21.445	9.308	0.19651	2.42701	37	S
K09Sa3G	17.2	0.15	K099Q	342.611	74.250	303.149	5.622	0.12474	2.38588	94	S
K09T05U	16.3	0.15	K09AG	32.219	297.497	41.699	8.211	0.28939	3.16605	37	S
K09T12F	18.5	0.15	K09AG	353.791	186.267	215.530	5.210	0.22502	2.29546	54	S
K09T13F	17.9	0.15	K099Q	316.650	270.852	135.515	4.082	0.10904	2.39846	28	S
K09T33S	16.1	0.15	K099Q	69.263	284.458	1.338	10.981	0.17459	2.59862	39	S
K09T47O	16.1	0.15	K09AG	269.598	253.273	246.882	6.007	0.12593	3.10005	35	S
K09U04T	18.6	0.15	K09AG	30.800	7.889	343.210	3.441	0.14813	2.17663	32	S
K09U11V	17.4	0.15	K09AG	19.917	316.987	33.774	13.730	0.26411	2.66030	39	S
K09U16B	17.4	0.15	K099Q	340.557	207.243	215.377	13.457	0.22802	2.61934	35	S
K09U17E	17.6	0.15	K09AG	59.629	317.914	355.726	6.385	0.19392	2.55127	35	S
K09U23R	17.6	0.15	K099Q	152.798	27.589	202.492	5.476	0.02855	2.42642	32	S
K09U29Q	16.4	0.15	K09B5	336.862	33.147	44.403	0.210	0.14526	3.16262	58	S
K09U43Y	17.5	0.15	K09AG	274.573	285.744	204.489	1.822	0.11626	2.72594	52	S
K09U49W	18.9	0.15	K09AG	12.527	321.503	45.393	5.034	0.23759	2.41459	47	S
K09U69B	16.6	0.15	K0996	327.045	218.249	178.034	9.505	0.14948	3.04836	70	S
K09U72C	18.1	0.15	K09B5	10.552	96.584	292.346	1.757	0.18183	2.40724	30	S
K09U86V	16.9	0.15	K09B5	46.958	66.519	269.061	3.098	0.19462	3.05150	26	S
K09U88B	17.9	0.15	K09AG	24.733	239.330	121.913	2.504	0.19772	2.37702	16	S
K09U89W	19.0	0.15	K09B5	41.532	351.420	350.996	4.455	0.18518	2.19994	30	S
K09U92L	17.5	0.15	K099Q	3.503	342.703	37.993	9.935	0.11663	3.11828	29	S
K09U98L	15.6	0.15	K09B5	194.400	159.408	54.415	10.689	0.04657	3.12450	53	S
K09UB8Y	18.7	0.15	K099Q	358.869	352.764	22.923	1.600	0.20275	2.38247	30	S
K09UC1L	16.4	0.15	K09AG	329.361	52.798	27.457	16.172	0.20045	3.15031	60	S
K09UC7S	18.5	0.15	K09AG	32.773	316.973	20.155	7.415	0.28614	2.52161	66	S
K09UD7X	17.1	0.15	K09AG	333.799	242.072	187.940	7.599	0.28306	2.67322	89	S

K09V10M	16.3	0.15	K09BP	72.271	263.427	55.407	12.562	0.13547	3.04283	39 S
K09V12Y	17.2	0.15	K09B5	40.342	311.140	41.171	9.825	0.15469	2.66214	35 S
K09V18J	16.5	0.15	K09B5	101.196	288.459	12.463	4.646	0.08099	2.81089	15 S
K09V27R	17.7	0.15	K09AG	39.412	309.324	41.934	2.301	0.08132	2.68847	26 S
K09V28Q	16.9	0.15	K09B5	342.069	194.930	232.275	6.238	0.07652	2.35190	17 S
K10G07U	18.3	0.15	K104E	115.906	42.109	44.427	21.716	0.10091	1.90141	28 S
K10G25M	16.8	0.15	K103P	346.997	70.621	149.700	7.759	0.16772	2.60005	48 S
K10K32P	14.8	0.15	K105O	355.889	69.805	243.430	25.216	0.19889	3.19230	26 S
K10K53N	15.3	0.15	K1073	1.270	151.146	165.047	18.899	0.17170	3.11276	113 S
K10K87T	17.8	0.15	K1073	33.337	351.526	284.896	8.057	0.15430	2.62658	100 S
K10K96T	16.3	0.15	K1073	44.511	274.297	354.804	9.929	0.09645	2.63521	108 S
K10KC5G	15.7	0.15	K1073	6.082	125.143	187.710	13.510	0.28485	3.16586	103 S
K10L05T	15.3	0.15	K1073	325.343	91.924	280.678	10.427	0.12595	3.13231	100 X
K10L30L	15.8	0.15	K107N	315.417	68.077	318.721	23.326	0.09481	2.98091	98 S
K10L42W	17.7	0.15	K107N	328.586	219.944	163.534	8.308	0.23291	2.76664	96 S
K10L49B	16.0	0.15	K107N	332.144	258.550	112.462	9.383	0.11524	3.14996	94 S
K10L53L	17.3	0.15	K107N	25.056	130.816	164.911	9.764	0.20060	2.59645	95 S
K10L57H	17.0	0.15	K107N	14.401	321.368	351.931	9.904	0.20653	3.14597	95 S
K10L57N	16.2	0.15	K107N	23.867	304.791	348.843	21.041	0.25002	3.11575	94 S
K10L72V	16.2	0.15	K107N	311.251	91.621	322.175	13.858	0.26273	3.19907	96 W
K10L85M	17.2	0.15	K107N	323.576	353.081	26.418	4.361	0.08322	2.75880	92 S
K10L86P	16.8	0.15	K107N	325.840	19.351	6.315	5.573	0.16960	3.20974	92 S
K10L87M	17.4	0.15	K107N	7.597	327.474	0.256	14.578	0.10517	3.13527	91 S
K10LB8D	16.7	0.15	K107N	64.823	247.622	7.241	10.028	0.17656	3.13388	89 S
K10LC7M	16.9	0.15	K107N	317.440	119.117	281.784	10.391	0.20001	2.61173	90 S
K10M06K	16.6	0.15	K107N	7.033	70.798	256.586	10.398	0.27538	3.11919	89 S
K10M37N	16.3	0.15	K107N	285.156	271.447	174.437	26.146	0.21860	3.05752	84 S
K10M54O	16.0	0.15	K107N	326.588	78.119	317.138	10.195	0.24194	3.10468	88 S
K10M93M	16.7	0.15	K107N	3.806	57.923	288.003	3.172	0.08259	2.77763	74 S
K10N34K	16.8	0.15	K107N	10.986	178.036	156.575	10.627	0.22546	2.76789	67 S
K10N35G	16.6	0.15	K107N	44.669	75.152	220.127	10.024	0.15514	2.75149	65 S
K10N43X	16.1	0.15	K107N	311.582	53.670	357.771	21.915	0.04505	3.05956	65 S
K10N51J	16.1	0.15	K107N	40.995	14.468	293.458	5.967	0.12662	3.20996	63 S
K10N56L	14.9	0.15	K108C	349.740	247.649	130.764	6.933	0.18180	3.16689	64 X
K10N86E	17.0	0.15	K107N	17.563	143.512	183.318	26.623	0.17288	3.19652	72 S
K10NB2N	15.0	0.15	K108C	63.521	241.094	54.911	10.081	0.06682	3.17882	61 S
K10O28X	15.7	0.15	K108C	355.470	49.746	323.973	5.786	0.24260	2.60788	55 S
K10P24E	17.8	0.15	K108C	354.766	7.789	332.252	9.715	0.25112	2.64065	39 X
K10P62G	17.3	0.15	K108C	335.639	20.298	347.065	5.303	0.07523	2.41474	32 S
K10P65L	17.1	0.15	K108C	335.113	15.061	356.975	3.841	0.11668	2.79797	33 S
K10P75V	17.4	0.15	K108C	24.648	354.035	300.616	12.126	0.17553	2.66618	30 X
K10P76K	18.4	0.15	K108C	14.869	181.614	131.549	3.441	0.23032	2.45006	31 S
K10Q05R	16.2	0.15	K1091	13.741	186.935	134.014	10.727	0.06086	3.10511	25 X
K10R01O	18.1	0.15	K1091	333.226	110.410	262.094	2.362	0.11070	2.75741	12 X
K10R04K	17.5	0.15	K1091	319.593	19.278	21.851	5.303	0.16541	2.71573	11 S
K10R05A	16.5	0.15	K1091	315.931	36.979	0.208	9.051	0.06285	3.08510	11ES
K10R07G	16.5	0.15	K1091	317.802	33.304	4.553	9.584	0.09823	3.14996	10 S
K10R22U	17.5	0.15	K1091	14.727	98.421	219.413	9.522	0.21097	2.60584	6 S
K10R23F	16.7	0.15	K1091	319.798	90.051	300.010	12.941	0.09287	2.59050	6 X
K10R32D	18.1	0.15	K1091	355.518	15.313	330.205	9.994	0.17169	2.87257	12 X
K10R32N	16.8	0.15	K1091	102.540	266.093	325.332	9.844	0.04795	2.97551	12 X
K10R32V	19.5	0.15	K1091	9.717	3.557	320.936	4.830	0.19199	2.34412	12 X
K10R36J	17.4	0.15	K1091	238.391	196.781	272.480	2.664	0.09114	2.41520	11 X
K10R37E	18.5	0.15	K1091	352.642	340.228	6.963	6.383	0.16198	2.18459	9 X
K10R39L	15.4	0.15	K1091	9.985	169.223	165.170	4.452	0.09587	3.13225	12 X
K10R40G	16.4	0.15	K1091	355.251	29.319	331.087	11.779	0.20007	2.65009	8 S
K10R40Y	18.1	0.15	K1091	17.968	243.411	66.120	3.546	0.20772	2.41853	9 X
K10R42N	18.0	0.15	K1091	15.548	22.799	299.294	6.364	0.17747	2.39969	12 S
K10R42O	15.2	0.15	K1091	248.189	180.426	259.917	20.865	0.04458	2.64048	9 S
K10R44M	16.9	0.15	K1091	326.492	50.278	354.349	0.990	0.21767	2.52177	7 X
K10R45Q	18.8	0.15	K1091	11.323	238.774	64.490	13.355	0.38286	2.27555	7 S
K10R52Q	17.5	0.15	K1091	310.504	202.463	198.786	20.975	0.10387	1.93086	7 W
K10R63G	17.7	0.15	K1091	335.549	47.367	336.954	10.713	0.31552	2.59763	7 S
K10R64X	18.0	0.15	K1091	14.026	330.063	353.817	1.134	0.19116	2.44356	12ES
K10R65C	16.0	0.15	K1091	331.549	85.996	294.007	3.961	0.24160	3.11245	10 X
K10R67D	16.3	0.15	K1091	353.643	257.319	117.961	6.810	0.15366	2.85750	8 X
K10R67E	17.1	0.15	K1091	322.846	353.302	56.081	7.253	0.12620	2.20387	8 X
K10R70F	17.0	0.15	K1091	44.210	313.381	359.972	19.675	0.08671	1.99649	5 X
K10R70H	16.0	0.15	K1091	47.040	0.476	282.395	6.423	0.18651	3.04896	5 X
K10R70J	15.6	0.15	K1091	262.262	153.570	305.564	8.966	0.11115	2.98526	5 X
K10R70L	17.3	0.15	K1091	3.579	351.279	346.914	12.578	0.23212	2.54792	4 X
K10R70P	17.0	0.15	K1091	316.323	292.294	139.442	6.531	0.25893	2.28890	4 S
K10R74V	18.2	0.15	K1091	0.363	168.701	192.020	26.175	0.15521	1.87437	8 X
K10R75C	18.3	0.15	K1091	9.177	170.891	165.927	3.424	0.20711	2.38929	8 S
K10R75D	16.7	0.15	K1091	352.551	98.342	283.513	11.957	0.20755	2.62329	8 X
K10R75F	16.9	0.15	K1091	356.510	90.325	260.003	0.907	0.19574	2.71508	5ES
K10R75N	17.4	0.15	K1091	3.922	16.969	322.130	1.578	0.20861	2.60107	4 X
K10R75P	17.1	0.15	K1091	358.144	290.231	73.978	5.685	0.22608	2.44638	4 S
K10R76B	18.1	0.15	K1091	334.142	231.050	165.258	8.479	0.32954	2.64820	12 S
K10R78M	17.9	0.15	K1091	24.001	41.252	275.992	0.742	0.20044	2.30995	10 S
K10R78U	17.8	0.15	K1091	340.555	209.959	160.775	6.911	0.12568	2.29384	10 S
K10R80K	17.4	0.15	K1091	345.431	343.716	23.635	2.914	0.15266	2.52707	9 S
K10R82D	18.3	0.15	K1091	6.483	31.588	298.237	5.885	0.32179	2.47758	3ES
K10R82P	18.1	0.15	K1091	327.600	194.907	186.362	5.238	0.18729	2.22604	10 S
K10R83H	16.9	0.15	K1091	296.120	84.443	324.741	9.154	0.05787	2.94175	12 S

K10R83W	16.2	0.15	K1091	35.788	149.430	157.016	9.974	0.08122	3.14872	10	S
K10R84H	18.4	0.15	K1091	38.165	284.825	5.046	3.383	0.20764	2.59288	10	S
K10R85A	16.3	0.15	K1091	6.144	181.891	157.672	10.554	0.13414	3.18956	10	S
K10R85Y	17.1	0.15	K1091	348.988	207.861	153.239	9.867	0.09690	3.03156	10	S
K10R86G	17.0	0.15	K1091	344.142	353.976	17.062	4.814	0.19239	3.14141	10	S
K10R86M	17.4	0.15	K1091	357.289	188.071	163.673	17.702	0.23381	3.07487	10	S
K10R86Y	17.6	0.15	K1091	17.245	325.104	352.282	19.023	0.24768	3.02395	10	ES
K10R88C	19.4	0.15	K1091	344.770	230.317	140.787	4.542	0.25821	2.38262	9	S
K10R89A	18.3	0.15	K1091	7.547	301.695	32.735	2.581	0.24912	2.66329	8	S
K10R89T	18.1	0.15	K1091	31.606	292.631	14.551	5.636	0.10712	2.71630	10	S
K10R90G	16.2	0.15	K108C	323.604	238.092	150.548	9.006	0.09396	3.16215	30	S

New observations:

J97G03L	KC2010	09	11.34931	00	09	16.91	+25	49	17.4	16.2	R	ER109448
J97G03L	KC2010	09	11.35109	00	09	17.02	+25	49	28.3	16.3	R	ER109448
J97G03L	KC2010	09	11.35358	00	09	17.21	+25	49	43.6	16.3	R	ER109448
J97G03L	KC2010	09	11.35573	00	09	17.37	+25	49	56.7	16.4	R	ER109448
J97G03L	KC2010	09	11.35786	00	09	17.53	+25	50	09.8	16.3	R	ER109448
J97G03L	KC2010	09	12.97331	00	12	28.81	+29	04	16.0	15.8	R	ER109160
J97G03L	KC2010	09	12.97487	00	12	28.98	+29	04	29.2	15.9	R	ER109160
J97G03L	KC2010	09	12.97643	00	12	29.17	+29	04	42.5	15.9	R	ER109160
J97G03L	C2010	09	13.73344	00	14	24.93	+31	01	24.3	15.8	V	ER109379
J97G03L	C2010	09	13.73529	00	14	25.20	+31	01	42.9	15.7	V	ER109379
J97G03L	C2010	09	13.74177	00	14	26.17	+31	02	47.0	15.8	V	ER109379
J97G03L	C2010	09	13.74362	00	14	26.44	+31	03	06.0	15.8	V	ER109379
J97G03L	C2010	09	13.74547	00	14	26.70	+31	03	24.4	15.7	V	ER109379
J97G03L	C2010	09	13.75012	00	14	27.40	+31	04	10.2	16.0	V	ER109379
J97G03L	C2010	09	13.75197	00	14	27.70	+31	04	29.0	15.9	V	ER109379
J97G03L	C2010	09	13.75382	00	14	27.98	+31	04	47.7	15.8	V	ER109379
J97G03L	C2010	09	13.76214	00	14	29.19	+31	06	10.3	15.7	V	ER109379
J97G03L	C2010	09	13.76863	00	14	30.20	+31	07	15.6	15.7	V	ER109379
J97G03L	C2010	09	13.77510	00	14	31.16	+31	08	20.4	15.7	V	ER109379
J97G03L	C2010	09	13.77881	00	14	31.76	+31	08	57.3	15.9	V	ER109379
K00P27Q	KC2010	09	12.94758	23	34	32.91	+14	50	37.2	18.6	R	ER109160
K00P27Q	KC2010	09	12.95032	23	34	32.90	+14	50	42.1	18.7	R	ER109160
K00P27Q	KC2010	09	12.95303	23	34	32.85	+14	50	46.1	18.5	R	ER109160
K03M04J	KC2010	09	13.15352	05	37	17.89	+05	25	37.8	18.8	R	ER109160
K03M04J	KC2010	09	13.15630	05	37	18.31	+05	25	41.2	19.2	R	ER109160
K03M04J	KC2010	09	13.15899	05	37	18.64	+05	25	44.4	19.0	R	ER109160
K05G59E	KC2010	09	13.05077	02	53	20.18	+31	50	49.2	17.7	R	ER109160
K05G59E	KC2010	09	13.05291	02	53	21.20	+31	50	48.9	17.5	R	ER109160
K05G59E	KC2010	09	13.05503	02	53	22.21	+31	50	48.7	17.6	R	ER109160
K05G59E	C2010	09	13.78381	02	59	22.31	+31	47	55.6	18.0	V	ER109379
K05G59E	C2010	09	13.78603	02	59	23.50	+31	47	55.2			ER109379
K05G59E	C2010	09	13.79422	02	59	27.50	+31	47	52.9			ER109379
K05G59E	C2010	09	13.79645	02	59	28.60	+31	47	52.1			ER109379
K05G59E	C2010	09	13.79867	02	59	29.67	+31	47	50.6			ER109379
K05QF1Y	KC2010	09	13.11425	03	30	54.75	+20	03	09.8	20.0	R	ER109160
K05QF1Y	KC2010	09	13.11703	03	30	54.95	+20	03	13.3	19.7	R	ER109160
K05QF1Y	KC2010	09	13.11956	03	30	55.31	+20	03	16.4	19.8	R	ER109160
K05R06R	KC2010	09	13.08349	03	11	04.25	+11	29	08.5	19.1	R	ER109160
K05R06R	KC2010	09	13.08613	03	11	04.78	+11	29	11.9	19.1	R	ER109160
K05R06R	KC2010	09	13.08894	03	11	05.45	+11	29	15.4	19.1	R	ER109160
K06T00B	2C2010	06	20.61117923	12	10	10.079	+37	16	48.87	21.7	R	ER109568
K06T00B	2C2010	06	20.61377123	12	10	10.735	+37	16	50.41	21.6	R	ER109568
K07S00J	KC2010	09	12.95612	23	50	19.10	+11	56	51.8	19.6	R	ER109160
K07S00J	KC2010	09	12.95883	23	50	18.83	+11	56	51.4	19.4	R	ER109160
K07S00J	KC2010	09	12.96156	23	50	18.60	+11	56	51.2	19.4	R	ER109160
K07T18Y	C2010	09	13.62280	23	33	57.74	-11	49	09.0	17.7	V	ER109379
K07T18Y	C2010	09	13.62465	23	33	57.66	-11	49	07.2	17.6	V	ER109379
K07T18Y	C2010	09	13.63112	23	33	57.22	-11	48	58.9	18.1	V	ER109379
K07T18Y	C2010	09	13.63297	23	33	57.12	-11	48	56.4	17.9	V	ER109379
K07T18Y	C2010	09	13.64131	23	33	56.55	-11	48	46.2	17.7	V	ER109379
K07T18Y	C2010	09	13.64595	23	33	56.26	-11	48	40.7	18.0	V	ER109379
K07T18Y	C2010	09	13.64780	23	33	56.12	-11	48	38.2	18.1	V	ER109379
K10CE0P	2C2010	06	20.35941213	11	21	21.282	-22	36	25.16	22.1	R	ER109568
K10CE0P	2C2010	06	20.36198513	11	21	21.428	-22	36	24.03	22.2	R	ER109568
K10L63Y	C2010	09	07.07536	20	24	44.26	-28	20	47.0			ER109834
K10L63Y	C2010	09	07.09781	20	24	48.43	-28	18	27.3			ER109834
K10L63Y	C2010	09	07.10715	20	24	50.19	-28	17	29.0			ER109834
K10L63Y	C2010	09	10.49622	20	36	33.78	-22	25	17.4	15.2	V	ER109379
K10L63Y	C2010	09	10.49812	20	36	34.10	-22	25	05.7	15.2	V	ER109379
K10L63Y	C2010	09	10.50002	20	36	34.46	-22	24	53.6	15.2	V	ER109379
K10L63Y	C2010	09	10.50431	20	36	35.25	-22	24	26.3	15.1	V	ER109379
K10L63Y	C2010	09	11.48153	20	39	55.25	-20	42	19.6	15.9	V	ER109379
K10L63Y	C2010	09	11.48343	20	39	55.58	-20	42	07.6	16.1	V	ER109379
K10L63Y	C2010	09	11.48529	20	39	55.93	-20	41	55.8	16.0	V	ER109379
K10L63Y	KC2010	09	11.81603	20	41	03.42	-20	07	32.7	15.1	R	ER109A53
K10L63Y	KC2010	09	11.82369	20	41	04.85	-20	06	43.9	14.8	R	ER109A53
K10L63Y	KC2010	09	11.82649	20	41	05.27	-20	06	25.7	15.0	R	ER109157
K10L63Y	C2010	09	11.82689	20	41	05.42	-20	06	24.4	15.3	V	ER109A48
K10L63Y	KC2010	09	11.82756	20	41	05.47	-20	06	19.2	15.0	R	ER109157
K10L63Y	C2010	09	11.82795	20	41	05.61	-20	06	18.1	15.4	V	ER109A48
K10L63Y	KC2010	09	11.82862	20	41	05.66	-20	06	12.4	15.0	R	ER109157
K10L63Y	C2010	09	11.82893	20	41	05.80	-20	06	11.8	15.2	V	ER109A48

K10L63Y	KC2010	09	11.82969	20	41	05.85	-20	06	05.9	15.0	R	ER109157
K10L63Y	C2010	09	11.82991	20	41	05.95	-20	06	05.3	15.3	V	ER109A48
K10L63Y	KC2010	09	11.83135	20	41	06.25	-20	05	57.0	15.0	R	ER109A53
K10L63Y	KC2010	09	11.83920	20	41	07.71	-20	05	08.0	15.1	R	ER109A53
K10L63Y	KC2010	09	11.84687	20	41	09.08	-20	04	20.0	14.9	R	ER109A53
K10L63Y	C2010	09	12.48631	20	43	18.68	-18	57	46.5	15.3	V	ER109379
K10L63Y	C2010	09	12.48818	20	43	19.05	-18	57	34.7	15.1	V	ER109379
K10L63Y	C2010	09	12.49006	20	43	19.39	-18	57	22.9	15.2	V	ER109379
K10L63Y	C2010	09	12.49971	20	43	21.09	-18	56	23.1	15.0	V	ER109379
K10L63Y	C2010	09	12.50721	20	43	22.49	-18	55	36.3	15.1	V	ER109379
K10L63Y	C2010	09	12.52148	20	43	25.02	-18	54	07.4	15.2	V	ER109379
K10L63Y	C2010	09	12.52523	20	43	25.71	-18	53	44.1	15.2	V	ER109379
K10L63Y	C2010	09	12.52922	20	43	26.44	-18	53	19.2	15.2	V	ER109379
K10L63Y	C2010	09	12.53109	20	43	26.77	-18	53	07.6	15.2	V	ER109379
K10L63Y	C2010	09	12.53295	20	43	27.10	-18	52	56.1	15.2	V	ER109379
K10L63Y	C2010	09	12.53725	20	43	27.87	-18	52	28.8	15.2	V	ER109379
K10L63Y	C2010	09	12.53912	20	43	28.21	-18	52	17.1	15.2	V	ER109379
K10L63Y	C2010	09	12.54525	20	43	29.33	-18	51	39.0	15.3	V	ER109379
K10L63Y	C2010	09	12.54903	20	43	29.98	-18	51	15.7	15.2	V	ER109379
K10L63Y	C2010	09	13.49896	20	46	41.99	-17	13	10.8	15.3	V	ER109379
K10L63Y	C2010	09	13.50084	20	46	42.32	-17	12	59.2	15.4	V	ER109379
K10L63Y	C2010	09	13.50271	20	46	42.68	-17	12	47.5	15.5	V	ER109379
K10L63Y	C2010	09	13.50666	20	46	43.37	-17	12	23.4	15.2	V	ER109379
K10L63Y	C2010	09	13.50853	20	46	43.72	-17	12	11.8	15.2	V	ER109379
K10L63Y	C2010	09	13.51039	20	46	44.05	-17	12	00.2	15.4	V	ER109379
K10L63Y	C2010	09	13.52527	20	46	46.73	-17	10	28.2	15.5	V	ER109379
K10L63Y	C2010	09	13.53174	20	46	47.87	-17	09	48.4	15.2	V	ER109379
K10L63Y	C2010	09	13.53362	20	46	48.21	-17	09	36.8	15.2	V	ER109379
K10L63Y	C2010	09	13.53551	20	46	48.56	-17	09	25.2	15.5	V	ER109379
K10L63Y	C2010	09	13.54132	20	46	49.60	-17	08	48.9	15.6	V	ER109379
K10L63Y	C2010	09	13.54318	20	46	49.93	-17	08	37.2	15.6	V	ER109379
K10OA1N	C2010	09	13.32244	20	05	14.27	+13	30	04.7	21.0	V	ER109291
K10OC6K	JC2010	09	14.21291	21	40	52.23	+53	34	21.9	21.3	V	ER109695
K10OC6K	JC2010	09	14.21386	21	40	51.78	+53	34	22.4	21.3	V	ER109695
K10OC6K	JC2010	09	14.21578	21	40	50.82	+53	34	22.9	21.7	V	ER109695
K10P02P	KC2010	09	11.84531	22	17	43.56	+08	23	08.7	19.4	R	ER109157
K10P02P	KC2010	09	11.85266	22	17	43.94	+08	23	18.3	19.2	R	ER109157
K10P09L	JC2010	09	14.17724	20	43	41.41	+30	23	02.3	19.9	V	ER109695
K10P09L	JC2010	09	14.19583	20	43	40.74	+30	23	31.5	20.0	V	ER109695
K10P09L	JC2010	09	14.20148	20	43	40.52	+30	23	40.2	19.9	V	ER109695
K10P10M	KC2010	09	12.99632	01	18	02.86	+13	32	39.2	18.6	R	ER109160
K10P10M	KC2010	09	12.99894	01	18	03.19	+13	32	42.4	18.5	R	ER109160
K10P10M	KC2010	09	13.00165	01	18	03.51	+13	32	45.6	18.4	R	ER109160
K10P57D	JC2010	09	14.23054	22	27	17.90	+23	44	27.3	21.4	V	ER109695
K10P57D	JC2010	09	14.23259	22	27	18.10	+23	44	32.5	21.1	V	ER109695
K10P57D	JC2010	09	14.23401	22	27	18.17	+23	44	35.6	20.5	V	ER109695
K10R00B	C2010	09	13.38229	21	22	28.76	-23	55	57.7	19.2	R	ER109474
K10R00B	C2010	09	13.38449	21	22	28.56	-23	56	08.0	19.4	R	ER109474
K10R00B	C2010	09	13.38634	21	22	28.41	-23	56	15.9	19.1	R	ER109474
K10R00B	C2010	09	13.38866	21	22	28.21	-23	56	25.8	19.6	R	ER109474
K10R03S	C2010	09	13.40845	21	51	50.09	-04	55	28.8	19.6	R	ER109474
K10R03S	C2010	09	13.41019	21	51	50.49	-04	55	30.4	19.1	R	ER109474
K10R03S	C2010	09	13.41192	21	51	50.88	-04	55	32.1	19.6	R	ER109474
K10R03S	C2010	09	13.41377	21	51	51.44	-04	55	33.9	19.7	R	ER109474
K10R03S	C2010	09	13.41597	21	51	52.07	-04	55	35.8	19.4	R	ER109474
K10R04J	KC2010	09	11.88864	23	11	13.88	+16	37	56.1	18.8	R	ER109157
K10R04J	KC2010	09	11.89184	23	11	15.04	+16	38	15.4	18.7	R	ER109157
K10R04J	KC2010	09	12.92187	23	18	11.78	+18	21	53.7	19.5	R	ER109160
K10R04J	KC2010	09	12.92325	23	18	12.28	+18	22	02.0	19.2	R	ER109160
K10R04J	KC2010	09	12.92461	23	18	12.77	+18	22	10.4	19.4	R	ER109160
K10R04J	KC2010	09	12.92597	23	18	13.28	+18	22	18.6	19.6	R	ER109160
K10R04J	KC2010	09	12.92733	23	18	13.77	+18	22	26.7	19.6	R	ER109160
K10R04J	C2010	09	13.25116723	20	25.60	+18	55	02.9	19.1	V	ER109H21	
K10R04J	C2010	09	13.25427023	20	26.73	+18	55	21.6	19.2	V	ER109H21	
K10R04J	C2010	09	13.25775523	20	28.01	+18	55	42.3	19.0	V	ER109H21	
K10R04J	C2010	09	13.26126423	20	29.29	+18	56	03.2	18.9	V	ER109H21	
K10R04J	C2010	09	13.26446123	20	30.48	+18	56	22.4	19.0	V	ER109H21	
K10R04J	KC2010	09	13.95996	23	25	24.47	+20	05	10.2	18.8	R	ER109A17
K10R04J	KC2010	09	13.97264	23	25	29.32	+20	06	25.5	18.7	R	ER109A17
K10R04J	KC2010	09	13.98337	23	25	33.46	+20	07	29.2	18.9	R	ER109A17
K10R11T	C2010	09	13.29699	22	28	38.66	-05	24	51.4	20.9	V	ER109291
K10R11T	C2010	09	13.30337	22	28	38.28	-05	24	54.3	21.1	V	ER109291
K10R11T	C2010	09	13.30701	22	28	38.07	-05	24	56.0	20.9	V	ER109291
K10R12C	KC2010	09	11.90700	23	55	19.62	+17	22	50.2	19.6	R	ER109157
K10R12C	KC2010	09	11.91435	23	55	19.96	+17	23	02.6	19.8	R	ER109157
K10R30U	KC2010	09	13.27265000	14	14.72	-16	38	48.4	20.3	V	ER109H21	
K10R30U	KC2010	09	13.28074500	14	18.53	-16	39	45.4	20.0	V	ER109H21	
K10R30U	KC2010	09	13.28379600	14	19.96	-16	40	06.6	20.4	V	ER109H21	
K10R30U	KC2010	09	13.29064900	14	23.18	-16	40	55.0	19.9	V	ER109H21	
K10R42J	C2010	09	13.44086	21	59	52.42	-12	10	46.5	19.8	R	ER109474
K10R42J	C2010	09	13.44363	21	59	52.02	-12	10	41.3	20.0	R	ER109474
K10R42K	KC2010	09	14.04808	03	41	28.38	+07	20	23.2	18.8	R	ER109A17
K10R42K	KC2010	09	14.05589	03	41	30.28	+07	20	26.0	18.9	R	ER109A17
K10R42K	KC2010	09	14.06486	03	41	32.47	+07	20	28.9	19.1	R	ER109A17
K10R42M	KC2010	09	13.09207	03	16	53.82	+08	38	47.4	19.2	R	ER109160

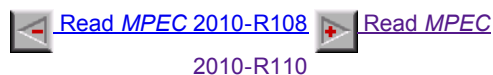
K10R42M	KC2010	09	13.09344	03	16	53.55	+08	38	50.8	19.1	R	ER109160
K10R42M	KC2010	09	13.09479	03	16	53.40	+08	38	54.0			ER109160
K10R42M	KC2010	09	13.09615	03	16	53.18	+08	38	57.4			ER109160
K10R42M	KC2010	09	13.09736	03	16	52.95	+08	39	01.1			ER109160
K10R43K	KC2010	09	11.87133	22	30	56.40	+10	58	53.5	18.8	R	ER109157
K10R43K	KC2010	09	11.87555	22	30	56.69	+10	58	49.2	19.1	R	ER109157
K10R43K	KC2010	09	11.87975	22	30	57.06	+10	58	45.3	19.0	R	ER109157
K10R43K	KC2010	09	12.91333	22	32	30.07	+10	42	01.5	19.1	R	ER109160
K10R43K	KC2010	09	12.91602	22	32	30.28	+10	41	58.8	19.2	R	ER109160
K10R43K	KC2010	09	12.91874	22	32	30.48	+10	41	56.1	19.2	R	ER109160
K10R43K	C2010	09	13.23387422	32	59.09	+10	36	43.3	19.4	V	ER109H21	
K10R43K	C2010	09	13.24517022	33	00.03	+10	36	32.1	19.3	V	ER109H21	
K10R43K	C2010	09	13.25597922	33	00.90	+10	36	21.1	18.9	V	ER109H21	
K10R43L	C2010	09	10.29638	23	13	44.22	+05	43	16.4	19.0		ER109704
K10R43L	C2010	09	10.30820	23	13	49.47	+05	43	00.9	19.1		ER109704
K10R43L	C2010	09	10.32002	23	13	54.78	+05	42	46.0	19.6		ER109704
K10R43L	C2010	09	10.33189	23	14	00.10	+05	42	30.3	19.4		ER109704
K10R43L	C2010	09	10.34373	23	14	05.41	+05	42	14.7	19.2		ER109704
K10R43L	KC2010	09	11.21218	23	20	40.13	+05	25	16.7	18.9	R	ER109448
K10R43L	KC2010	09	11.21986	23	20	42.87	+05	25	08.6	18.6	R	ER109448
K10R43L	KC2010	09	11.22745	23	20	45.56	+05	25	00.4	18.7	R	ER109448
K10R43L	C2010	09	11.29584	23	21	09.29	+05	23	47.6	18.9		ER109704
K10R43L	C2010	09	11.30799	23	21	13.42	+05	23	34.2	19.1		ER109704
K10R43L	C2010	09	11.32011	23	21	17.61	+05	23	22.5	19.3		ER109704
K10R43L	C2010	09	11.33226	23	21	21.79	+05	23	09.1	19.1		ER109704
K10R43L	C2010	09	11.34437	23	21	25.93	+05	22	56.1	19.4		ER109704
K10R43L	C2010	09	13.27024523	31	31.51	+04	54	42.6	20.2	V	ER109H21	
K10R43L	C2010	09	13.27878623	31	33.41	+04	54	35.8	19.8	V	ER109H21	
K10R43L	C2010	09	13.28131723	31	33.98	+04	54	34.3	20.2	V	ER109H21	
K10R43L	C2010	09	13.28712923	31	35.24	+04	54	29.6	20.0	V	ER109H21	
K10R64K	C2010	09	13.39826	21	45	42.77	-36	03	25.7	19.4	R	ER109474
K10R64K	C2010	09	13.40012	21	45	42.38	-36	03	21.8	18.8	R	ER109474
K10R64K	C2010	09	13.40185	21	45	41.84	-36	03	16.2	18.7	R	ER109474
K10R64K	QC2010	09	13.45098	21	45	29.87	-36	01	08.2	19.1	V	ER109E12
K10R64K	QC2010	09	13.45351	21	45	29.20	-36	01	01.3	19.2	V	ER109E12
K10R80T	C2010	09	13.19716922	25	24.14	-19	23	36.6	19.9	V	ER109H21	
K10R80T	C2010	09	13.20224022	25	24.79	-19	23	10.5	19.5	V	ER109H21	
K10R80T	C2010	09	13.20794722	25	25.55	-19	22	41.0	19.4	V	ER109H21	
K10R80T	C2010	09	13.21374522	25	26.32	-19	22	10.8	19.0	V	ER109H21	
K10R82M	C2010	09	13.15907423	39	23.63	+00	19	10.0	18.3	V	ER109H21	
K10R82M	C2010	09	13.16194523	39	22.39	+00	18	07.2	17.9	V	ER109H21	
K10R82M	C2010	09	13.16486023	39	21.12	+00	17	03.6	18.0	V	ER109H21	
K10R82M	C2010	09	13.16792823	39	19.78	+00	15	56.8	18.1	V	ER109H21	
K10R82M	C2010	09	13.17080923	39	18.51	+00	14	54.1	17.6	V	ER109H21	
K10R82M	C2010	09	13.17502023	39	16.67	+00	13	23.3	18.3	V	ER109H21	
K10R82M	C2010	09	13.29535	23	38	31.94	-00	27	36.9	18.0		ER109704
K10R82M	C2010	09	13.30759	23	38	26.69	-00	31	39.3	18.4		ER109704
K10R82M	C2010	09	13.31984	23	38	21.51	-00	35	38.7	18.4		ER109704
02100	KC2010	09	13.16182	05	40	09.35	+08	02	10.1	17.5	R	ER109160
02100	KC2010	09	13.16398	05	40	09.96	+08	02	06.3	17.5	R	ER109160
02100	KC2010	09	13.16612	05	40	10.61	+08	02	02.7	17.6	R	ER109160
02212	KC2010	09	13.04539	02	45	49.53	+10	09	05.2	15.5	R	ER109160
02212	KC2010	09	13.04693	02	45	49.30	+10	09	04.7	15.4	R	ER109160
02212	KC2010	09	13.04853	02	45	49.06	+10	09	04.2	15.4	R	ER109160
03671	KC2010	09	11.38892	20	29	56.28	-70	39	20.5	16.7	V	ER109432
03671	KC2010	09	11.39393	20	30	00.03	-70	39	07.1	16.6	V	ER109432
03671	KC2010	09	11.40020	20	30	04.66	-70	38	50.4	16.7	V	ER109432
03671	KC2010	09	13.46826	20	54	16.14	-69	00	16.2	16.6	V	ER109432
03671	KC2010	09	13.47530	20	54	20.46	-68	59	55.1	16.5	V	ER109432
03671	KC2010	09	13.49766	20	54	34.19	-68	58	47.9	16.5	V	ER109432
04055	C2010	09	13.17446	17	55	49.60	-04	27	59.0	16.0	R	ER109H53
04055	C2010	09	13.17654	17	55	50.03	-04	28	05.1	15.9	R	ER109H53
04055	C2010	09	13.17862	17	55	50.42	-04	28	10.4	15.7	R	ER109H53
04055	C2010	09	13.18071	17	55	50.80	-04	28	16.0	15.9	R	ER109H53
04055	C2010	09	13.18279	17	55	51.27	-04	28	21.6	15.6	R	ER109H53
04055	C2010	09	13.18487	17	55	51.55	-04	28	26.7	15.8	R	ER109H53
04197	KC2010	09	13.09999	03	19	07.62	+21	29	25.1	16.3	R	ER109160
04197	KC2010	09	13.10158	03	19	07.90	+21	29	27.9	16.3	R	ER109160
04197	KC2010	09	13.10315	03	19	08.17	+21	29	30.8	16.2	R	ER109160
05143	KC2010	09	12.93043	23	26	57.23	+06	17	46.4	18.6	R	ER109160
05143	KC2010	09	12.93317	23	26	57.03	+06	17	45.5	18.6	R	ER109160
05143	KC2010	09	12.93589	23	26	56.84	+06	17	44.4	18.4	R	ER109160
05869	KC2010	09	13.05781	03	07	13.75	+35	22	56.9	19.3	R	ER109160
05869	KC2010	09	13.06057	03	07	14.06	+35	22	57.1	19.3	R	ER109160
05869	KC2010	09	13.06340	03	07	14.37	+35	22	57.6	19.1	R	ER109160
06239	C2010	09	13.22784	22	47	39.32	-06	13	43.7	16.3	R	ER109H53
06239	C2010	09	13.23131	22	47	38.70	-06	13	44.5	16.4	R	ER109H53
06239	C2010	09	13.23479	22	47	38.08	-06	13	45.5	16.2	R	ER109H53
06239	C2010	09	13.23869	22	47	37.42	-06	13	46.3	16.2	R	ER109H53
06239	C2010	09	13.24314	22	47	36.67	-06	13	46.9	16.3	R	ER109H53
06239	C2010	09	13.24662	22	47	36.06	-06	13	47.7	16.4	R	ER109H53
06239	C2010	09	14.10934	22	45	23.62	-06	17	04.9	16.8	R	ER109H23
06239	C2010	09	14.12384	22	45	21.29	-06	17	08.3	16.7	R	ER109H23
06239	C2010	09	14.13840	22	45	18.93	-06	17	11.7	16.9	R	ER109H23
07336	C2010	09	13.20903	22	20	56.55	-04	48	12.8	16.3	R	ER109H53

07336	C2010	09	13.21111	22	20	56.92	-04	48	16.2	16.6	R	ER109H53
07336	C2010	09	13.21319	22	20	57.22	-04	48	19.3	16.5	R	ER109H53
07336	C2010	09	13.21528	22	20	57.57	-04	48	22.1	16.4	R	ER109H53
07336	C2010	09	13.21736	22	20	57.91	-04	48	25.6	16.3	R	ER109H53
07336	C2010	09	13.21944	22	20	58.23	-04	48	28.9	16.4	R	ER109H53
12538	KC2010	09	12.97897	00	44	38.65	+30	45	09.1	19.0	R	ER109160
12538	KC2010	09	12.98172	00	44	38.44	+30	45	08.0	19.1	R	ER109160
12538	KC2010	09	12.98450	00	44	38.26	+30	45	06.4	18.9	R	ER109160
19764	KC2010	09	12.96830	00	28	24.19	+07	04	34.1	16.4	R	ER109160
19764	KC2010	09	12.96986	00	28	24.08	+07	04	33.5	16.4	R	ER109160
19764	KC2010	09	12.97141	00	28	23.99	+07	04	33.0	16.4	R	ER109160
65679	KC2010	09	13.07497	03	07	33.07	+17	19	23.2	19.2	R	ER109160
65679	KC2010	09	13.07767	03	07	32.94	+17	19	22.1	18.9	R	ER109160
65679	KC2010	09	13.08041	03	07	32.81	+17	19	20.6	19.0	R	ER109160
66008	C2010	09	12.99338	00	18	57.51	-16	30	41.6	17.4	V	ER109J75
66008	C2010	09	12.99925	00	18	56.86	-16	30	57.3	17.5	V	ER109J75
66008	C2010	09	13.00536	00	18	56.15	-16	31	15.5	17.5	V	ER109J75
66008	C2010	09	13.01122	00	18	55.48	-16	31	32.0	17.7	V	ER109J75
66008	C2010	09	13.01733	00	18	54.81	-16	31	48.7	17.5	V	ER109J75
66008	C2010	09	13.02318	00	18	54.16	-16	32	05.6	17.4	V	ER109J75
A0926	KC2010	09	13.87125	02	27	15.03	+86	12	04.0	17.2	R	ER109J32
A0926	KC2010	09	13.99496	02	31	55.35	+86	09	31.9	17.2	R	ER109J32
D8404	C2010	09	14.06566	20	05	06.45	-12	50	59.6	17.7	R	ER109H23
D8404	C2010	09	14.08022	20	05	02.86	-12	51	02.8	17.7	R	ER109H23
D8404	C2010	09	14.09472	20	04	59.24	-12	51	05.0	18.0	R	ER109H23
D8847	KC2010	09	12.93903	23	33	02.57	+24	37	23.3	19.3	R	ER109160
D8847	KC2010	09	12.94174	23	33	02.37	+24	37	19.5	19.4	R	ER109160
D8847	KC2010	09	12.94448	23	33	02.15	+24	37	16.0	19.4	R	ER109160
E3381	C2010	09	13.58947	22	25	01.01	+03	38	21.7	16.7	V	ER109379
E3381	C2010	09	13.59132	22	25	00.88	+03	38	22.1	16.5	V	ER109379
E3381	C2010	09	13.59594	22	25	00.59	+03	38	22.5	16.4	V	ER109379
E3381	C2010	09	13.59964	22	25	00.35	+03	38	23.6	16.3	V	ER109379
E3381	C2010	09	13.60428	22	25	00.05	+03	38	24.3	16.3	V	ER109379
E3381	C2010	09	13.60799	22	24	59.81	+03	38	25.0	16.5	V	ER109379
E3381	C2010	09	13.61631	22	24	59.24	+03	38	26.4	16.3	V	ER109379
F2952	KC2010	09	13.02172	01	51	13.63	+33	45	20.5	18.0	R	ER109160
F2952	KC2010	09	13.02387	01	51	12.80	+33	45	31.4	18.2	R	ER109160
F2952	KC2010	09	13.02603	01	51	11.96	+33	45	42.4	18.1	R	ER109160
F3842	KC2010	09	13.14650	05	01	13.50	+06	11	52.4	18.3	R	ER109160
F3842	KC2010	09	13.14865	05	01	13.85	+06	11	51.6	18.5	R	ER109160
F3842	KC2010	09	13.15081	05	01	14.24	+06	11	50.7	18.2	R	ER109160
F4029	C2010	09	13.70787	23	39	39.67	+49	06	42.0	15.1	V	ER109379
F4029	C2010	09	13.70914	23	39	38.62	+49	06	47.2	15.2	V	ER109379
F4029	C2010	09	13.71042	23	39	37.54	+49	06	52.4	15.1	V	ER109379
F4029	C2010	09	13.71668	23	39	32.34	+49	07	18.1	15.2	V	ER109379
F4029	C2010	09	13.72036	23	39	29.28	+49	07	33.3	15.2	V	ER109379
F4029	C2010	09	13.72163	23	39	28.21	+49	07	38.5	15.1	V	ER109379
F4029	C2010	09	13.72291	23	39	27.16	+49	07	43.4	14.8	V	ER109379
F4029	C2010	09	13.72660	23	39	24.05	+49	07	58.7	15.1	V	ER109379
F4029	C2010	09	13.72787	23	39	23.00	+49	08	03.9	15.1	V	ER109379
F4029	C2010	09	13.72916	23	39	21.94	+49	08	09.2	15.0	V	ER109379
J9145	KC2010	09	13.13836	04	43	02.80	+32	05	39.3	19.0	R	ER109160
J9145	KC2010	09	13.14096	04	43	02.01	+32	05	39.5	19.2	R	ER109160
J9145	KC2010	09	13.14368	04	43	01.13	+32	05	39.8	19.2	R	ER109160
L9071	KC2010	09	13.13240	04	06	53.76	+30	52	48.0	19.7	R	ER109160
L9071	KC2010	09	13.13512	04	06	53.75	+30	52	47.1	19.1	R	ER109160
O3147	KC2010	09	13.01339	01	39	59.41	+29	20	50.5	18.7	R	ER109160
O3147	KC2010	09	13.01613	01	39	59.30	+29	20	50.8	18.8	R	ER109160
O3147	KC2010	09	13.01890	01	39	59.16	+29	20	51.2	18.5	R	ER109160
O4977	C2010	09	13.11794	18	34	35.27	+13	40	58.1	19.4		ER109704
O4977	C2010	09	13.14219	18	34	35.43	+13	40	26.2	19.6		ER109704
O4977	C2010	09	13.16644	18	34	35.53	+13	39	56.4	19.6		ER109704
O8083	KC2010	09	13.06651	03	06	52.84	+09	49	42.2	19.8	R	ER109160
O8083	KC2010	09	13.06919	03	06	53.06	+09	49	39.7	19.4	R	ER109160
O8083	KC2010	09	13.07188	03	06	53.28	+09	49	38.2	19.5	R	ER109160

A. U. Tomatic

(C) Copyright 2010 MPC

M.P.E.C. 2010-R109



Display MPEC number: Clear

Enter an [MPEC](#) number in one of the following forms:

- 1997-B01 (the full form)
- J97B01 (the packed version of the full form)
- B01 (the abbreviated form)



Choose a language to translate this page!



Select to language



Google Translate	
	Gadgets powered by Google