

[Printer-friendly version](#)



# IAU Minor Planet Center

## MPC Operations Status

Processing ([Info](#))

ECS: Accessible

## Observer Services (NEOs)

- NEO Services Overview
- NEO Confirmation
- NEO Confirmation (RA order)
- NEO Ratings
- NEO Page
- NEO Observation Planning Aid
- NEOChecker
- NEOCMTChecker

## Observer Services

- Services Overview
- IAUMail
- Minor Planet & Comet Ephem.
- Natural Satellite Ephemerides
- New Object Ephemerides
- MPCChecker
- CMTChecker
- Distant Artificial Satellites
- Observing List Customizer
- Sky Coverage

## Orbital Elements

- Orbital Elements Overview
- MPCORB
- Orbital Elements for Programs
- MPCAT
- MPCUPDATE

## Astrometric Observations

- MPCAT-OBS
- MPCOBS

## Publications

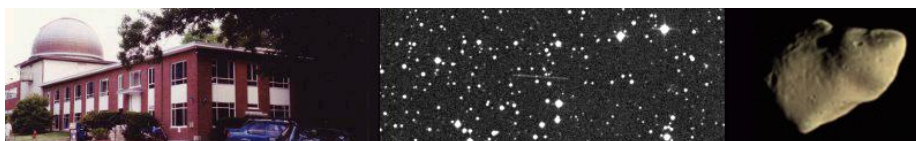
- Publications Overview
- MPECs
- MPC Archive
- MPC RSS Feeds
- CBAT RSS Feeds

## Documentation

- Documentation Overview
- Minor Body Astrometry
- MPC Status Page
- What's New

## Lists and Plots

- Lists and Plots Overview
- Minor Planets



## MPEC 2010-N42 : 2010 NJ1

The following [Minor Planet Electronic Circular](#) may be linked-to from your own Web pages, but must **not** otherwise be [redistributed electronically](#).  
A form allowing access to any MPEC is at [the bottom of this page](#).



[Read MPEC 2010-N280](#)

M.P.E.C. 2010-N42

Issued 2010 July 8, 19:29 UT

**The Minor Planet Electronic Circulars contain information on unusual minor planets and routine data on comets. They are published on behalf of Commission 20 of the International Astronomical Union by the Minor Planet Center, Smithsonian Astrophysical Observatory, Cambridge, MA 02138, U.S.A.**

Prepared using the [Tamkin Foundation Computer Network](#)

MPC@CFA.HARVARD.EDU

URL <http://www.minorplanetcenter.org/iau/mpc.html> ISSN 1523-6714

2010 NJ1

### Observations:

K10N01J*	S2010	07	03.36382	13	36	33.01	+15	53	13.2		22	R	EN042C51
K10N01J	s2010	07	03.36382	1	-	6466.5888	-	634.1926	+ 2344.7269				EN042C51
K10N01J	S2010	07	03.42990	13	36	53.96	+15	48	29.4				EN042C51
K10N01J	s2010	07	03.42990	1	-	6479.5245	-	648.8825	+ 2305.1996				EN042C51
K10N01J	S2010	07	03.49599	13	37	14.71	+15	43	45.6				EN042C51
K10N01J	s2010	07	03.49599	1	-	6492.2957	-	663.5418	+ 2265.0859				EN042C51
K10N01J	S2010	07	03.56221	13	37	35.50	+15	39	00.2				EN042C51
K10N01J	s2010	07	03.56221	1	-	6478.8145	-	663.8973	+ 2302.8820				EN042C51
K10N01J	S2010	07	03.62830	13	37	56.27	+15	34	17.5				EN042C51
K10N01J	s2010	07	03.62830	1	-	6491.3891	-	678.5749	+ 2262.7962				EN042C51
K10N01J	S2010	07	03.76060	13	38	37.69	+15	24	51.6				EN042C51
K10N01J	s2010	07	03.76060	1	-	6490.0215	-	693.4901	+ 2262.2287				EN042C51
K10N01J	KC2010	07	07.14815813	54	58.51	+11	35	42.1			20.9	V	EN042H21
K10N01J	KC2010	07	07.16006213	55	01.68	+11	34	56.2			20.7	V	EN042H21
K10N01J	C2010	07	07.16617	13	55	03.57	+11	34	35.5		20.4	V	EN042G96
K10N01J	C2010	07	07.16782	13	55	04.00	+11	34	29.5		20.2	V	EN042G96
K10N01J	C2010	07	07.16865	13	55	04.26	+11	34	26.0		20.5	V	EN042G96
K10N01J	KC2010	07	07.17310813	55	05.12	+11	34	05.4			21.1	V	EN042H21
K10N01J	JC2010	07	07.19007	13	55	09.91	+11	33	03.6		20.6	C	EN042695
K10N01J	JC2010	07	07.19212	13	55	10.46	+11	32	55.9		20.4	C	EN042695
K10N01J	JC2010	07	07.19416	13	55	11.01	+11	32	48.1		20.4	C	EN042695
K10N01J	tC2010	07	08.26083	13	59	53.25	+10	25	37.2		20.9	V	EN042291
K10N01J	tC2010	07	08.26663	13	59	54.72	+10	25	16.1		20.4	V	EN042291
K10N01J	tC2010	07	08.27088	13	59	55.74	+10	24	59.8		20.7	V	EN042291

### Observer details:

[291 IPL/Spacewatch II](#). Observer T. H. Bressi. 1.8-m f/2.7 reflector + CCD.  
[695 Kitt Peak](#). Observers R. Crawford, M. Trueblood. Measurer R. Crawford.  
 0.9-m f/8 Ritchey-Chretien + CCD.  
[G96 Mt. Lemmon Survey](#). Observer A. Boattini. Measurers J. D. Ahern, E. C. Beshore, A. Boattini, G. J. Garradd, A. R. Gibbs, A. D. Grauer, R. E. Hill, R. A. Kowalski, S. M. Larson, R. H. McNaught. 1.5-m reflector + CCD.

- Comets
- Animations
- General Information**
- Astronomical Headlines
- Press Information Sheets
- General**
- Contact Us
- Index
- Site Map
- Search Site
- Tech Info
- Documentation
- Links**
- Minor Planet Center
- Central Bureau for Astro. Tel.
- International Comet Quarterly*
- Smithsonian Astro. Obs.

H21 Astronomical Research Observatory, Westfield. Observer R. Holmes.  
 Measurers R. Holmes, H. Devore. 0.81-m f/4.0 astrograph + CCD.  
 C51 WISE. Measurers A. Mainzer, E. Wright, J. Bauer, T. Grav, J. Dailey,  
 J. Masiero, R. Cutri, R. McMillan, R. Walker.  
 ([http://wise.ssl.berkeley.edu/mission\\_sci.html](http://wise.ssl.berkeley.edu/mission_sci.html))

**Orbital elements:**

2010 NJ1  
 Epoch 2010 July 23.0 TT = JDT 2455400.5 Earth [MOID](#) = 0.1463 AU  
 MPC  
 M 99.34183 (2000.0) P Q  
 n 1.05508611 Peri. 357.30527 -0.59565125 -0.78971037  
 a 0.9556029 Node 129.20674 +0.74045943 -0.61068710  
 e 0.5327752 Incl. 10.92252 +0.31131885 -0.05847044  
 P 0.93 H 20.2 G 0.15 U 9

**Residuals in seconds of arc**

100703 C51	1.2-	0.5-	100707 H21	0.1-	0.0	100707 695	0.3-	0.2-
100703 C51	0.0	0.3+	100707 H21	0.1+	0.0	100707 695	0.1-	0.0-
100703 C51	0.8-	0.7+	100707 G96	0.7-	0.3-	100707 695	0.1+	0.1+
100703 C51	0.8-	0.2-	100707 G96	0.7-	0.1+	100708 291	0.6+	0.2-
100703 C51	0.4+	0.2+	100707 G96	0.1-	0.2-	100708 291	0.4+	0.4+
100703 C51	3.0+	0.3-	100707 H21	0.3-	0.4-	100708 291	0.6-	0.1-

**Ephemeris:**

2010 NJ1 a,e,i = 0.96, 0.53, 11 q = 0.4465

Date	TT	R. A. (2000)	Decl.	Delta	r	Elong.	Phase	V
2010 07 03		13 34.61	+16 19.6	0.373	1.108	94.1	66.3	20.6
2010 07 13		14 18.80	+05 54.1	0.456	1.180	99.4	58.2	20.9
2010 07 23		14 51.08	-01 37.3	0.555	1.244	100.6	53.4	21.4
2010 08 02		15 17.41	-07 08.0	0.664	1.299	99.2	50.5	21.8
2010 08 12		15 40.77	-11 18.5	0.779	1.346	96.5	48.4	22.1

**Sonia Keys**

**(C) Copyright 2010 MPC**

**M.P.E.C. 2010-N42**



[Read MPEC 2010-N28o](#)

Display  Clear

Enter an [MPEC](#) number in one of the following forms:

- 1997-B01 (the full form)
- J97B01 (the packed version of the full form)
- B01 (the abbreviated form)



Choose a language to translate this page!



Select to language

Google Translate

Select Language



Gadgets powered by Google

