

[Printer-friendly version](#)



IAU Minor Planet Center

MPC Operations Status

Processing [\(Info\)](#)

ECS: Accessible

Observer Services (NEOs)

- NEO Services Overview
- NEO Confirmation
- NEO Confirmation (RA order)
- NEO Ratings
- NEO Page
- NEO Observation Planning Aid
- NEOChecker
- NEOCMTChecker

Observer Services

- Services Overview
- IAUMail
- Minor Planet & Comet Ephem.
- Natural Satellite Ephemerides
- New Object Ephemerides
- MPChecker
- CMTChecker
- Distant Artificial Satellites
- Observing List Customizer
- Sky Coverage

Orbital Elements

- Orbital Elements Overview
- MPCORB
- Orbital Elements for Programs
- MPCAT
- MPCUPDATE

Astrometric Observations

- MPCAT-OBS
- MPCOBS

Publications

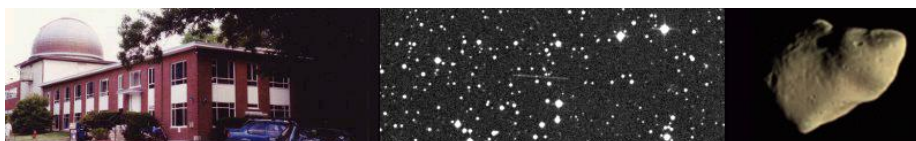
- Publications Overview
- MPECs
- MPC Archive
- MPC RSS Feeds
- CBAT RSS Feeds

Documentation

- Documentation Overview
- Minor Body Astrometry
- MPC Status Page
- What's New

Lists and Plots

- Lists and Plots Overview
- Minor Planets



MPEC 2010-N40 : 2010 NG1

The following [Minor Planet Electronic Circular](#) may be linked-to from your own Web pages, but must **not** otherwise be [redistributed electronically](#).
 A form allowing access to any MPEC is at [the bottom of this page](#).



M.P.E.C. 2010-N40

Issued 2010 July 8, 19:15 UT

The Minor Planet Electronic Circulars contain information on unusual minor planets and routine data on comets. They are published on behalf of Commission 20 of the International Astronomical Union by the Minor Planet Center, Smithsonian Astrophysical Observatory, Cambridge, MA 02138, U.S.A.

Prepared using the [Tamkin Foundation Computer Network](#)

MPC@CFA.HARVARD.EDU

URL <http://www.minorplanetcenter.org/iau/mpc.html> ISSN 1523-6714

2010 NG1

Observations:

K10N01G	S2010	06	30.86075	16	47	13.08	+63	40	37.7		22	R	EN040C51
K10N01G	s2010	06	30.86075	1	-	1451.3746	+	738.8989	+	6703.5175			EN040C51
K10N01G	S2010	07	01.12523	16	46	32.50	+63	31	59.0				EN040C51
K10N01G	s2010	07	01.12523	1	-	1539.1763	+	720.6604	+	6685.9179			EN040C51
K10N01G	S2010	07	01.25753	16	46	12.35	+63	27	38.7				EN040C51
K10N01G	s2010	07	01.25753	1	-	1542.0905	+	717.3158	+	6685.6575			EN040C51
K10N01G	S2010	07	01.52213	16	45	32.40	+63	18	59.3				EN040C51
K10N01G	s2010	07	01.52213	1	-	1551.6377	+	708.9966	+	6684.6193			EN040C51
K10N01G	S2010	07	01.65444	16	45	11.88	+63	14	32.6				EN040C51
K10N01G	s2010	07	01.65444	1	-	1555.2899	+	705.4233	+	6683.9277			EN040C51
K10N01G	S2010	07	01.78674	16	44	52.14	+63	10	07.6				EN040C51
K10N01G	s2010	07	01.78674	1	-	1557.5157	+	701.9013	+	6683.6221			EN040C51
K10N01G	S2010	07	01.91904	16	44	32.70	+63	05	42.6				EN040C51
K10N01G	s2010	07	01.91904	1	-	1560.0259	+	698.1233	+	6683.5838			EN040C51
K10N01G	S2010	07	02.05122	16	44	13.41	+63	01	20.3				EN040C51
K10N01G	s2010	07	02.05122	1	-	1643.9439	+	681.5159	+	6665.0976			EN040C51
K10N01G*	S2010	07	02.71261	16	42	37.85	+62	39	00.0		22	R	EN040C51
K10N01G	s2010	07	02.71261	1	-	1739.1728	+	648.7272	+	6644.1671			EN040C51
K10N01G	S2010	07	02.71274	16	42	37.76	+62	39	00.8				EN040C51
K10N01G	s2010	07	02.71274	1	-	1658.9004	+	662.0973	+	6663.2833			EN040C51
K10N01G	S2010	07	02.84492	16	42	19.20	+62	34	31.9				EN040C51
K10N01G	s2010	07	02.84492	1	-	1740.9401	+	644.6123	+	6644.0357			EN040C51
K10N01G	S2010	07	02.97722	16	42	00.77	+62	30	02.7				EN040C51
K10N01G	s2010	07	02.97722	1	-	1743.3372	+	640.2183	+	6643.9747			EN040C51
K10N01G	S2010	07	03.24183	16	41	23.82	+62	20	59.1				EN040C51
K10N01G	s2010	07	03.24183	1	-	1749.2288	+	632.0457	+	6643.0682			EN040C51
K10N01G	S2010	07	03.50643	16	40	47.54	+62	11	51.4				EN040C51
K10N01G	s2010	07	03.50643	1	-	1754.7158	+	623.2054	+	6642.6898			EN040C51
K10N01G	S2010	07	03.63861	16	40	29.60	+62	07	18.8				EN040C51
K10N01G	s2010	07	03.63861	1	-	1837.8386	+	604.3742	+	6621.7878			EN040C51
K10N01G	S2010	07	03.77091	16	40	11.81	+62	02	43.5				EN040C51
K10N01G	s2010	07	03.77091	1	-	1839.6996	+	600.2827	+	6621.5041			EN040C51
K10N01G	S2010	07	03.90322	16	39	54.09	+61	58	09.6				EN040C51

Comets
 Animations
General Information
 Astronomical Headlines
 Press Information Sheets
General
 Contact Us
 Index
 Site Map
 Search Site
 Tech Info
 Documentation
Links
 Minor Planet Center
 Central Bureau for Astro. Tel.
International Comet Quarterly
 Smithsonian Astro. Obs.

K10N01G	s2010	07	03.90322	1	-	1841.5556	+	595.8726	+	6621.5086		EN040C51
K10N01G	S2010	07	04.16783	16	39	19.01	+61	48	55.6			EN040C51
K10N01G	s2010	07	04.16783	1	-	1846.6932	+	586.8528	+	6620.6634		EN040C51
K10N01G	IC2010	07	07.17005816	33	13.28	+60	01	08.4				EN040H21
K10N01G	IC2010	07	07.17904416	33	12.23	+60	00	48.4				EN040H21
K10N01G	C2010	07	07.18803016	33	11.17	+60	00	29.5		21.3	V	EN040H21
K10N01G	C2010	07	07.20444716	33	09.14	+59	59	52.9		21.4	V	EN040H21
K10N01G	C2010	07	07.24810316	33	03.81	+59	58	14.0		21.1	V	EN040H21
K10N01G	C2010	07	07.28452116	32	59.50	+59	56	50.6		20.9	V	EN040H21
K10N01G	C2010	07	07.30516516	32	57.09	+59	56	03.3		20.9	V	EN040H21
K10N01G	JC2010	07	08.28560	16	31	12.32	+59	19	27.1	21.3	C	EN040695
K10N01G	JC2010	07	08.28777	16	31	12.08	+59	19	22.0	21.6	C	EN040695
K10N01G	JC2010	07	08.28993	16	31	11.83	+59	19	17.2	20.7	C	EN040695
K10N01G	C2010	07	08.30025	16	31	10.53	+59	18	53.2	20.5	V	EN040691
K10N01G	C2010	07	08.30635	16	31	09.82	+59	18	39.2	20.6	V	EN040691
K10N01G	C2010	07	08.31180	16	31	09.20	+59	18	26.2	20.5	V	EN040691

Observer details:

[691 Steward Observatory, Kitt Peak.](#) Observer T. H. Bressi. 0.9-m f/3 reflector + CCD.
[695 Kitt Peak.](#) Observers R. Crawford, T. Kaye, M. Trueblood. **Measurer** R. Crawford. 0.9-m f/8 Ritchey-Chretien + CCD.
 H21 Astronomical Research Observatory, Westfield. Observer R. Holmes. Measurer S. Foglia.
 C51 WISE. Measurers A. Mainzer, E. Wright, J. Bauer, T. Grav, J. Dailey, J. Masiero, R. Cutri, R. McMillan, R. Walker.
http://wise.ssl.berkeley.edu/mission_sci.html

Orbital elements:

2010 NG1 Earth [MOID](#) = 0.0817 AU
 Epoch 2010 July 23.0 TT = JDT 2455400.5 MPC

M	182.68820		(2000.0)	P		Q	
n	1.25991155	Peri.	299.91884	-0.31201498		-0.94551560	
a	0.8490032	Node	167.19602	+0.94995122		-0.31206945	
e	0.3336832	Incl.	24.80891	+0.01547019		+0.09280572	
P	0.78	H	20.4	G	0.15	U	9

Residuals in seconds of arc

100630	C51	1.1-	0.5-	100702	C51	1.2+	1.1+	100707	H21	0.2-	0.4+
100701	C51	0.9+	0.2-	100703	C51	0.1+	0.6+	100707	H21	0.2+	0.2+
100701	C51	1.7+	0.2+	100703	C51	0.2+	1.2-	100707	H21	0.4+	0.2+
100701	C51	(3.0+ 4.6+)		100703	C51	0.0	0.1-	100708	695	0.6+	0.0
100701	C51	1.4-	0.9+	100703	C51	0.3+	0.6-	100708	695	0.7+	0.1-
100701	C51	1.4-	0.3-	100703	C51	0.2+	1.1+	100708	695	0.7+	0.1+
100701	C51	0.2-	0.8-	100704	C51	0.0	0.4+	100708	691	0.1-	0.0
100702	C51	0.7+	1.7+	100707	H21	1.0-	1.2-	100708	691	0.1-	0.2+
100702	C51	0.3-	1.7-	100707	H21	0.5-	1.1-	100708	691	0.1-	0.1-
100702	C51	0.5-	0.5-	100707	H21	0.1-	0.2+				
100702	C51	0.2+	0.1-	100707	H21	0.2-	0.5+				

Ephemeris:

2010 NG1 a,e,i = 0.85, 0.33, 25 q = 0.5657

Date	TT	R. A. (2000)	Decl.	Delta	r	Elong.	Phase	V	
2010	07	03	16 41.94	+62 29.4	0.453	1.120	91.0	65.2	21.2
2010	07	13	16 24.11	+56 13.8	0.447	1.130	92.8	64.0	21.2
2010	07	23	16 15.34	+48 54.0	0.438	1.132	93.7	63.6	21.1
2010	08	02	16 13.08	+40 37.8	0.429	1.127	93.6	64.0	21.1
2010	08	12	16 15.55	+31 32.9	0.422	1.113	92.3	65.4	21.1
2010	08	22	16 21.60	+21 52.5	0.418	1.093	89.7	67.8	21.1
2010	09	01	16 30.13	+11 52.0	0.416	1.064	85.9	71.1	21.1
2010	09	11	16 40.29	+01 45.7	0.418	1.028	81.0	75.3	21.2
2010	09	21	16 51.15	-08 13.5	0.422	0.984	75.1	80.4	21.3
2010	10	01	17 01.24	-17 58.6	0.427	0.934	68.5	86.3	21.4
2010	10	11	17 08.38	-27 25.7	0.431	0.876	61.2	93.3	21.6

Sonia Keys

(C) Copyright 2010 MPC

M.P.E.C. 2010-N40



[Read MPEC 2010-N39](#)



[Read MPEC 2010-N28o](#)

Display MPEC number: Clear

Enter an [MPEC](#) number in one of the following forms:

- 1997-B01 (the full form)
- J97B01 (the packed version of the full form)