

[Printer-friendly version](#)



IAU Minor Planet Center

MPC Operations Status

Processing ([Info](#))

ECS: Accessible

Observer Services (NEOs)

- NEO Services Overview
- NEO Confirmation
- NEO Confirmation (RA order)
- NEO Ratings
- NEO Page
- NEO Observation Planning Aid
- NEOChecker
- NEOCMTChecker

Observer Services

- Services Overview
- IAUMail
- Minor Planet & Comet Ephem.
- Natural Satellite Ephemerides
- New Object Ephemerides
- MPChecker
- CMTChecker
- Distant Artificial Satellites
- Observing List Customizer
- Sky Coverage

Orbital Elements

- Orbital Elements Overview
- MPCORB
- Orbital Elements for Programs
- MPCAT
- MPCUPDATE

Astrometric Observations

- MPCAT-OBS
- MPCOBS

Publications

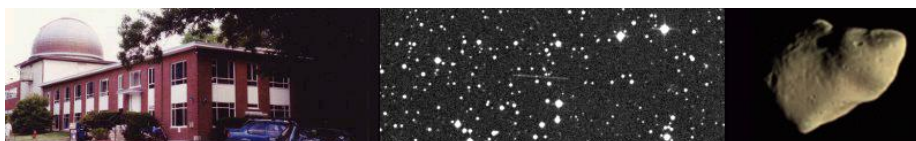
- Publications Overview
- MPECs
- MPC Archive
- MPC RSS Feeds
- CBAT RSS Feeds

Documentation

- Documentation Overview
- Minor Body Astrometry
- MPC Status Page
- What's New

Lists and Plots

- Lists and Plots Overview
- Minor Planets



MPEC 2010-N20 : 2010 NM

The following [Minor Planet Electronic Circular](#) may be linked-to from your own Web pages, but must **not** otherwise be [redistributed electronically](#).
A form allowing access to any MPEC is at [the bottom of this page](#).



M.P.E.C. 2010-N20

Issued 2010 July 6, 15:14 UT

The Minor Planet Electronic Circulars contain information on unusual minor planets and routine data on comets. They are published on behalf of Commission 20 of the International Astronomical Union by the Minor Planet Center, Smithsonian Astrophysical Observatory, Cambridge, MA 02138, U.S.A.

Prepared using the [Tamkin Foundation Computer Network](#)

MPC@CFA.HARVARD.EDU

URL <http://www.minorplanetcenter.org/iau/mpc.html> ISSN 1523-6714

2010 NM

Observations:

K10N00M*	C2010	07	05.42160	20	44	02.14	-15	26	10.8	19.8	V	EN020G96
K10N00M	C2010	07	05.42749	20	44	02.25	-15	27	35.6	19.4	V	EN020G96
K10N00M	C2010	07	05.43337	20	44	02.40	-15	28	56.6	19.3	V	EN020G96
K10N00M	C2010	07	05.43927	20	44	02.50	-15	30	21.6	19.7	V	EN020G96
K10N00M	C2010	07	05.47200	20	44	03.37	-15	38	06.0	19.2	V	EN020G96
K10N00M	C2010	07	05.47260	20	44	03.33	-15	38	15.3	18.9	V	EN020G96
K10N00M	C2010	07	05.47318	20	44	03.40	-15	38	22.4	19.9	V	EN020G96
K10N00M	C2010	07	05.47376	20	44	03.44	-15	38	31.3	18.6	V	EN020G96
K10N00M	C2010	07	06.31955	20	45	14.87	-19	08	12.9	19.6	V	EN020G96
K10N00M	C2010	07	06.32059	20	45	14.95	-19	08	29.0	19.9	V	EN020G96
K10N00M	IC2010	07	06.32367120	45	11.62	-19	09	30.2				EN020H21
K10N00M	C2010	07	06.32662620	45	11.71	-19	10	16.4		19.4	V	EN020H21
K10N00M	C2010	07	06.32943020	45	11.79	-19	10	59.5		19.4	V	EN020H21
K10N00M	C2010	07	06.33242120	45	11.86	-19	11	44.7		19.4	V	EN020H21
K10N00M	JC2010	07	06.34668	20	45	15.75	-19	15	13.7	19.4	C	EN020695
K10N00M	JC2010	07	06.34770	20	45	15.76	-19	15	29.7	19.2	C	EN020695
K10N00M	JC2010	07	06.34853	20	45	15.79	-19	15	42.6	19.1	C	EN020695
K10N00M	C2010	07	06.38435	20	45	16.48	-19	25	00.5	19.7	V	EN020G96
K10N00M	C2010	07	06.39093	20	45	16.59	-19	26	43.2	19.7	V	EN020G96
K10N00M	C2010	07	06.39751	20	45	16.81	-19	28	25.9	19.6	V	EN020G96
K10N00M	C2010	07	06.40402	20	45	16.92	-19	30	06.7	20.0	V	EN020G96

Observer details:

[695 Kitt Peak](#). Observers M. Trueblood, R. Crawford. [Measurer R. Crawford.](#)

[0.9-m f/8 Ritchey-Chretien + CCD.](#)

[G96 Mt. Lemmon Survey](#). Observer A. Boattini. Measurers J. D. Ahern, E. C. Beshore, A. Boattini, G. J. Garradd, A. R. Gibbs, A. D. Grauer, R. E. Hill, R. A. Kowalski, S. M. Larson, R. H. McNaught. 1.5-m reflector + CCD.

H21 Astronomical Research Observatory, Westfield. Observer R. Holmes. Measurer S. Foglia.

Orbital elements:

- Comets
- Animations
- General Information**
- Astronomical Headlines
- Press Information Sheets
- General**
- Contact Us
- Index
- Site Map
- Search Site
- Tech Info
- Documentation
- Links**
- Minor Planet Center
- Central Bureau for Astro. Tel.
- International Comet Quarterly*
- Smithsonian Astro. Obs.

2010 NM											Earth MOID = 0.0508 AU
Epoch 2010 July 23.0 TT = JDT 2455400.5											MPC
M 251.36796	(2000.0)										P
n 1.02628655	Peri.	318.43377			+0.41982374			-0.86697994			Q
a 0.9733976	Node	105.13658			+0.88872542			+0.33266178			
e 0.1500771	Incl.	16.15001			+0.18416071			+0.37105514			
P 0.96	H 24.3			G 0.15			U 8				
Residuals in seconds of arc											
100705 G96	0.3+	0.5+	100705 G96	0.4+	0.5-	100706 695	0.2+	0.4+			
100705 G96	0.0	0.8-	100706 G96	0.5-	0.1+	100706 695	0.0	0.2+			
100705 G96	0.2+	1.5+	100706 G96	0.2+	0.2+	100706 695	0.1+	0.3+			
100705 G96	0.3-	0.1+	100706 H21	0.0	0.0	100706 G96	0.0	0.2+			
100705 G96	0.1+	0.1-	100706 H21	0.2+	0.6-	100706 G96	0.6-	0.2-			
100705 G96	0.7-	0.9-	100706 H21	0.2+	0.3-	100706 G96	0.4+	0.6-			
100705 G96	0.1+	0.2+	100706 H21	0.0	0.7+	100706 G96	0.2-	0.3-			
Ephemeris:											
2010 NM	a, e, i = 0.97, 0.15, 16										q = 0.8273
Date	TT	R. A. (2000)	Decl.	Delta	r	Elong.	Phase	V			
2010 07 03		20 41.35	-06 55.2	0.0703	1.077	148.2	29.8	20.0			
2010 07 08		20 47.54	-26 50.5	0.0559	1.068	157.0	21.9	19.2			
2010 07 13		20 58.53	-54 07.1	0.0522	1.059	143.5	34.8	19.4			
2010 07 18		21 38.51	-78 31.6	0.0605	1.049	121.2	56.0	20.3			
2010 07 23		06 49.17	-84 22.7	0.0766	1.038	104.9	71.0	21.3			
2010 07 28		08 04.03	-75 01.8	0.0960	1.027	94.2	80.5	22.1			
2010 08 02		08 17.08	-68 47.2	0.117	1.015	86.8	86.6	22.7			

Sonia Keys (C) Copyright 2010 MPC M.P.E.C. 2010-N20



Display MPEC number: Clear

Enter an [MPEC](#) number in one of the following forms:

- 1997-B01 (the full form)
- J97B01 (the packed version of the full form)
- B01 (the abbreviated form)

Choose a language to translate this page!

Select to language

Google Translate

Select Language

Google Gadgets powered by Google

