

[Printer-friendly version](#)



# IAU Minor Planet Center

## MPC Operations Status

Processing ([Info](#))

ECS: Accessible

## Observer Services (NEOs)

- NEO Services Overview
- NEO Confirmation
- NEO Confirmation (RA order)
- NEO Ratings
- NEO Page
- NEO Observation Planning Aid
- NEOChecker
- NEOCMTChecker

## Observer Services

- Services Overview
- IAUMail
- Minor Planet & Comet Ephem.
- Natural Satellite Ephemerides
- New Object Ephemerides
- MPChecker
- CMTChecker
- Distant Artificial Satellites
- Observing List Customizer
- Sky Coverage

## Orbital Elements

- Orbital Elements Overview
- MPCORB
- Orbital Elements for Programs
- MPCAT
- MPCUPDATE

## Astrometric Observations

- MPCAT-OBS
- MPCOBS

## Publications

- Publications Overview
- MPECs

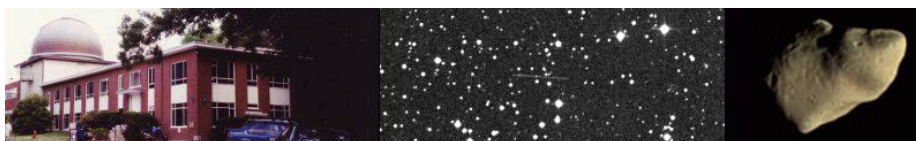
- MPC Archive
- MPC RSS Feeds
- CBAT RSS Feeds

## Documentation

- Documentation Overview
- Minor Body Astrometry
- MPC Status Page
- What's New

## Lists and Plots

- Lists and Plots Overview
- Minor Planets



## MPEC 2010-L27 : 2010 LJ14

The following [Minor Planet Electronic Circular](#) may be linked-to from your own Web pages, but must **not** otherwise be [redistributed electronically](#).  
A form allowing access to any MPEC is at [the bottom of this page](#).



M.P.E.C. 2010-L27

Issued 2010 June 7, 04:06 UT

**The Minor Planet Electronic Circulars contain information on unusual minor planets and routine data on comets. They are published on behalf of Commission 20 of the International Astronomical Union by the Minor Planet Center, Smithsonian Astrophysical Observatory, Cambridge, MA 02138, U.S.A.**

Prepared using the [Tamkin Foundation Computer Network](#)

MPC@CFA.HARVARD.EDU

URL <http://www.minorplanetcenter.org/iau/mpc.html> ISSN 1523-6714

2010 LJ14

### Observations:

K10L14J*	C2010	06	05.22742	16	27	15.88	+02	12	09.5	19.6	V	EL027691
K10L14J	C2010	06	05.24506	16	27	14.39	+02	12	10.4	19.5	V	EL027691
K10L14J	C2010	06	05.26270	16	27	12.86	+02	12	11.3	19.6	V	EL027691
K10L14J	KC2010	06	05.32482	16	27	07.40	+02	12	14.3	19.8	C	EL027H10
K10L14J	KC2010	06	05.32948	16	27	07.04	+02	12	14.4	19.9	C	EL027H10
K10L14J	KC2010	06	05.33422	16	27	06.60	+02	12	15.0	19.6	C	EL027H10
K10L14J	KC2010	06	05.94091	16	26	16.39	+02	12	44.4	19.1	R	EL027J04
K10L14J	KC2010	06	05.94335	16	26	16.21	+02	12	45.4	19.3	R	EL027J04
K10L14J	KC2010	06	05.94559	16	26	15.77	+02	12	43.3	18.9	R	EL027B33
K10L14J	KC2010	06	05.94868	16	26	15.51	+02	12	43.6	19.1	R	EL027B33
K10L14J	KC2010	06	05.95333	16	26	15.10	+02	12	44.1	19.1	R	EL027B33
K10L14J	KC2010	06	05.96148	16	26	14.65	+02	12	46.3	19.4	R	EL027J04
K10L14J	KC2010	06	05.96473	16	26	14.37	+02	12	46.5	19.4	R	EL027J04
K10L14J	KC2010	06	05.96798	16	26	14.09	+02	12	46.6	19.3	R	EL027J04
K10L14J	JC2010	06	06.192975	16	25	55.55	+02	12	54.6	19.8	C	EL027695
K10L14J	JC2010	06	06.223299	16	25	52.95	+02	12	55.6	19.8	C	EL027695
K10L14J	JC2010	06	06.247187	16	25	50.89	+02	12	56.5	19.9	C	EL027695
K10L14J	C2010	06	06.27397	16	25	48.61	+02	12	57.0	19.8	V	EL027291
K10L14J	C2010	06	06.27795	16	25	48.24	+02	12	57.4	19.9	V	EL027291
K10L14J	C2010	06	06.28198	16	25	47.90	+02	12	57.6	20.0	V	EL027291
K10L14J	KC2010	06	06.28694	16	25	47.33	+02	12	57.3	19.7	R	EL027H36
K10L14J	KC2010	06	06.30932	16	25	45.53	+02	12	58.0	20.1	R	EL027H36
K10L14J	KC2010	06	06.31654	16	25	44.91	+02	12	58.3	19.8	R	EL027H36
K10L14J	C2010	06	06.41292	16	25	36.69	+02	13	02.0	20.6	V	EL027291
K10L14J	C2010	06	06.41709	16	25	36.35	+02	13	02.2	20.3	V	EL027291
K10L14J	C2010	06	06.42112	16	25	36.01	+02	13	02.3	20.2	V	EL027291
K10L14J	KC2010	06	06.97705	16	24	50.45	+02	13	12.8			EL027118
K10L14J	KC2010	06	06.98147	16	24	50.22	+02	13	13.1			EL027118
K10L14J	KC2010	06	06.98619	16	24	50.04	+02	13	14.6	20.0	V	EL027J87
K10L14J	KC2010	06	06.98663	16	24	49.80	+02	13	13.5			EL027118
K10L14J	KC2010	06	06.99326	16	24	49.42	+02	13	14.4	20.3	V	EL027J87
K10L14J	KC2010	06	07.00035	16	24	48.86	+02	13	14.8	20.0	V	EL027J87
K10L14J	KC2010	06	07.00466	16	24	48.47	+02	13	13.5			EL027J95

Comets  
 Animations  
**General Information**  
 Astronomical Headlines  
 Press Information Sheets  
**General**  
 Contact Us  
 Index  
 Site Map  
 Search Site  
 Tech Info  
 Documentation  
**Links**  
 Minor Planet Center  
 Central Bureau for Astro. Tel.  
*International Comet Quarterly*  
 Smithsonian Astro. Obs.

K10L14J KC2010 06 07.00843 16 24 48.15 +02 13 13.0 EL027J95  
 K10L14J KC2010 06 07.01245 16 24 47.79 +02 13 13.3 20.3 R EL027J95

Observer details:

[118 Modra](#). Observers S. Gajdos, J. Vilagi. Measurer S. Gajdos. 0.6-m f/5.5 reflector + CCD.  
[291 LPL/Spacewatch II](#). Observer J. V. Scotti. 1.8-m f/2.7 reflector + CCD.  
[691 Steward Observatory, Kitt Peak](#). Observer J. V. Scotti. 0.9-m f/3 reflector + CCD.  
[695 Kitt Peak](#). Observers M. Trueblood, R. Crawford. Measurer R. Crawford. 0.9-m f/8 Ritchey-Chretien + CCD.  
[B33 Libbiano Observatory, Peccioli](#). Observers P. Bacci, R. Emilio. Measurer P. Bacci. 0.5-m f/8 Ritchey-Chretien + CCD.  
[H10 Tzec Maun Observatory, Mayhill](#). Observer L. Elenin. 0.36-m f/3.8 Maksutov-Newtonian + CCD.  
[H36 Sandlot Observatory, Scranton](#). Observer G. Hug. 0.56-m reflector + CCD.  
[J04 ESA Optical Ground Station, Tenerife](#). Observer D. Abreu. Measurers M. Busch, D. Koschny, t. participants of the German Minor Planet Meeting, i. Drebach. 1.0-m f/4.4 reflector + CCD.  
[J87 La Canada](#). Observer J. Lacruz. 0.40-m Ritchey-Chretien + CCD.  
[J95 Great Shefford](#). Observer P. Birtwhistle. 0.40-m f/6.0 Schmidt-Cassegrain + CCD.

Orbital elements:

2010 LJ14 Earth [MOID](#) = 0.2005 AU  
 Epoch 2010 July 23.0 TT = JDT 2455400.5 MPC  
 M 136.21893 (2000.0) P Q  
 n 0.48534880 Peri. 294.63565 -0.33954858 -0.94042763  
 a 1.6036149 Node 175.11433 +0.91984761 -0.33586700  
 e 0.3106810 Incl. 11.78619 +0.19643607 -0.05281311  
 P 2.03 H 17.9 G 0.15 U 9

Residuals in seconds of arc

100605	691	0.6-	0.2+	100605	J04	0.1-	0.2+	100606	291	0.1-	0.3+
100605	691	0.1+	0.1+	100605	J04	0.1-	0.2+	100606	291	0.1-	0.3+
100605	691	0.2+	0.0	100606	695	0.1-	0.1+	100606	118	2.7-	0.6-
100605	H10	0.2+	0.4-	100606	695	0.1-	0.0	100606	118	0.6-	0.4-
100605	H10	0.9+	0.5-	100606	695	0.2-	0.1+	100606	J87	0.3+	0.1+
100605	H10	0.5+	0.2-	100606	291	0.1+	0.4-	100606	118	0.4-	0.0
100605	J04	0.6-	0.9-	100606	291	0.3-	0.1-	100606	J87	0.0	0.2-
100605	J04	0.1-	0.0	100606	291	0.2-	0.0	100607	J87	0.6+	0.1+
100605	B33	0.1-	0.2-	100606	H36	0.4-	0.4+	100607	J95	0.4+	0.0
100605	B33	0.0	0.0	100606	H36	1.3+	0.4+	100607	J95	0.4+	0.6-
100605	B33	0.1-	0.3+	100606	H36	1.3+	0.5+	100607	J95	0.1+	0.4-
100605	J04	0.1-	0.1+	100606	291	0.3-	0.2+				

Ephemeris:

a,e,i = 1.60, 0.31, 12 q = 1.1054

Date	TT	R. A. (2000)	Decl.	Delta	r	Elong.	Phase	V
2010 06 03		16 30.42	+02 09.1	0.929	1.899	155.4	12.8	19.9
2010 06 13		16 17.09	+02 08.3	0.979	1.926	149.9	15.3	20.1
2010 06 23		16 06.73	+01 33.1	1.050	1.952	141.8	18.8	20.4
2010 07 03		16 00.06	+00 31.6	1.137	1.976	133.1	22.1	20.7
2010 07 13		15 57.20	-00 47.8	1.237	1.998	124.5	24.8	21.0
2010 07 23		15 57.91	-02 17.9	1.348	2.017	116.4	26.8	21.3
2010 08 02		16 01.77	-03 52.9	1.467	2.035	108.8	28.2	21.5
2010 08 12		16 08.32	-05 28.9	1.590	2.051	101.6	29.0	21.7
2010 08 22		16 17.20	-07 02.9	1.716	2.064	94.8	29.2	21.9
2010 09 01		16 28.03	-08 32.6	1.843	2.076	88.4	29.1	22.1
2010 09 11		16 40.53	-09 56.4	1.969	2.085	82.1	28.6	22.2
2010 09 21		16 54.49	-11 13.0	2.092	2.092	76.1	27.8	22.3
2010 10 01		17 09.69	-12 21.2	2.212	2.098	70.3	26.7	22.4
2010 10 11		17 25.97	-13 20.1	2.326	2.101	64.6	25.4	22.5
2010 10 21		17 43.21	-14 08.8	2.434	2.102	59.0	24.0	22.6
2010 10 31		18 01.25	-14 46.9	2.534	2.101	53.5	22.3	22.6

Carl W. Hergenrother

(C) Copyright 2010 MPC

M.P.E.C. 2010-L27



[Read MPEC 2010-L26](#)



[Read MPEC 2010-L28](#)

Display MPEC number:  Clear

Enter an [MPEC](#) number in one of the following forms:

- 1997-B01 (the full form)
- J97B01 (the packed version of the full form)