

[Printer-friendly version](#)



IAU Minor Planet Center

MPC Operations Status

Processing ([Info](#))

ECS: Accessible

Observer Services (NEOs)

- NEO Services Overview
- NEO Confirmation
- NEO Confirmation (RA order)
- NEO Ratings
- NEO Page
- NEO Observation Planning Aid
- NEOChecker
- NEOCMTChecker

Observer Services

- Services Overview
- IAUMail
- Minor Planet & Comet Ephem.
- Natural Satellite Ephemerides
- New Object Ephemerides
- MPChecker
- CMTChecker
- Distant Artificial Satellites
- Observing List Customizer
- Sky Coverage

Orbital Elements

- Orbital Elements Overview
- MPCORB
- Orbital Elements for Programs
- MPCAT
- MPCUPDATE

Astrometric Observations

- MPCAT-OBS
- MPCOBS

Publications

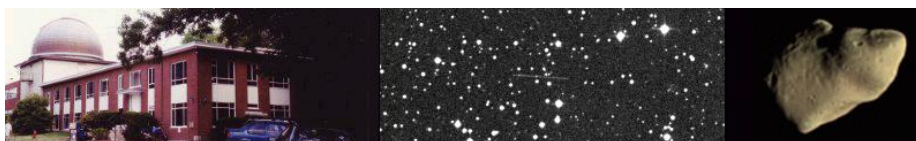
- Publications Overview
- MPECs
- MPC Archive
- MPC RSS Feeds
- CBAT RSS Feeds

Documentation

- Documentation Overview
- Minor Body Astrometry
- MPC Status Page
- What's New

Lists and Plots

- Lists and Plots Overview
- Minor Planets



MPEC 2010-L24 : 2010 LF14

The following [Minor Planet Electronic Circular](#) may be linked-to from your own Web pages, but must **not** otherwise be [redistributed electronically](#).
A form allowing access to any MPEC is at [the bottom of this page](#).



M.P.E.C. 2010-L24

Issued 2010 June 6, 18:18 UT

The Minor Planet Electronic Circulars contain information on unusual minor planets and routine data on comets. They are published on behalf of Commission 20 of the International Astronomical Union by the Minor Planet Center, Smithsonian Astrophysical Observatory, Cambridge, MA 02138, U.S.A.

Prepared using the [Tamkin Foundation Computer Network](#)

MPC@CFA.HARVARD.EDU

URL <http://www.minorplanetcenter.org/iau/mpc.html> ISSN 1523-6714

2010 LF14

Observations:

K10L14F*	C2010	06	05.26538	15	45	12.02	-21	08	42.9	20.2	V	EL024703
K10L14F	C2010	06	05.27543	15	45	16.59	-21	08	44.9	19.4	V	EL024703
K10L14F	C2010	06	05.29495	15	45	25.56	-21	08	49.5	19.6	V	EL024703
K10L14F	C2010	06	05.34025	15	45	46.26	-21	08	59.4	19.8	V	EL024703
K10L14F	C2010	06	05.34192	15	45	47.12	-21	08	59.2	19.1	V	EL024703
K10L14F	KC2010	06	05.92248	15	50	36.83	-21	11	18.4	19.4	R	EL024J04
K10L14F	KC2010	06	05.92397	15	50	37.53	-21	11	18.6	19.6	R	EL024J04
K10L14F	KC2010	06	05.94571	15	50	47.39	-21	11	25.3	19.5	R	EL024J04
K10L14F	KC2010	06	05.94682	15	50	47.92	-21	11	25.4	19.6	R	EL024J04
K10L14F	KC2010	06	05.94720	15	50	48.11	-21	11	25.7	19.5	R	EL024J04
K10L14F	KC2010	06	06.04762	15	51	38.07	-21	10	18.1	18.9	R	EL024I19
K10L14F	KC2010	06	06.05215	15	51	40.13	-21	10	19.9	18.7	R	EL024I19
K10L14F	KC2010	06	06.05681	15	51	42.26	-21	10	20.2	19.7	R	EL024I19
K10L14F	KC2010	06	06.20865	15	52	51.00	-21	10	52.9	19.3	R	EL024I19
K10L14F	KC2010	06	06.21324	15	52	53.11	-21	10	52.7	19.4	R	EL024I19
K10L14F	KC2010	06	06.21767	15	52	55.11	-21	10	53.6	19.8	R	EL024I19
K10L14F	C2010	06	06.24614	15	53	12.27	-21	12	33.6	19.0	V	EL024703
K10L14F	C2010	06	06.24780	15	53	13.02	-21	12	33.9	19.3	V	EL024703
K10L14F	KC2010	06	06.25460	15	53	14.82	-21	12	38.9	19.4	R	EL024H36
K10L14F	KC2010	06	06.26903	15	53	21.42	-21	12	41.7	19.8	R	EL024H36
K10L14F	KC2010	06	06.27506	15	53	24.93	-21	12	38.4	19.2	C	EL024H10
K10L14F	KC2010	06	06.27578	15	53	24.45	-21	12	42.9	19.8	R	EL024H36
K10L14F	KC2010	06	06.27936	15	53	26.85	-21	12	38.0	18.6	C	EL024H10
K10L14F	KC2010	06	06.28864	15	53	31.03	-21	12	40.4	19.1	C	EL024H10
K10L14F	JC2010	06	06.33013	15	53	50.37	-21	12	45.9	20.1	C	EL024695
K10L14F	JC2010	06	06.33718	15	53	53.59	-21	12	46.7	20.3	C	EL024695
K10L14F	JC2010	06	06.34027	15	53	54.97	-21	12	47.1	20.3	C	EL024695

Observer details:

[695 Kitt Peak.](#) Observers M. Trueblood, R. Crawford. Measurer R. Crawford.
[0.9-m f/8 Ritchey-Chretien + CCD.](#)
[703 Catalina Sky Survey.](#) Observers A. R. Gibbs, S. F. Tornero. Measurers J. D. Ahern, E. C. Beshore, A. Boattini, G. J. Garradd, A. R. Gibbs,

- Comets
- Animations
- General Information**
- Astronomical Headlines
- Press Information Sheets
- General**
- Contact Us
- Index
- Site Map
- Search Site
- Tech Info
- Documentation
- Links**
- Minor Planet Center
- Central Bureau for Astro. Tel.
- International Comet Quarterly*
- Smithsonian Astro. Obs.

A. D. Grauer, R. E. Hill, R. A. Kowalski, S. M. Larson, R. H. McNaught.
 0.68-m Schmidt + CCD.
[H10 Tzec Maun Observatory, Mayhill.](#) Observers D. Chestnov, A. Novichonok.
 0.36-m f/3.8 Maksutov-Newtonian + CCD.
[H36 Sandlot Observatory, Scranton.](#) Observer G. Hug. 0.56-m reflector + CCD.
[I19 Observatorio El Gato Gris, Tanti.](#) Observer C. Colazo. 0.35-m f/11
 Schmidt-Cassegrain + CCD + f/3.3 focal reducer.
[J04 ESA Optical Ground Station, Tenerife.](#) Observer D. Abreu. Measurers
 M. Busch, D. Koschny, t. participants of the German Minor Planet Meeting,
 i. Drebach. 1.0-m f/4.4 reflector + CCD.

Orbital elements:
 2010 LF14 Earth [MOID](#) = 0.0870 AU
 Epoch 2010 July 23.0 TT = JDT 2455400.5 MPC
 M 19.25273 (2000.0) P Q
 n 0.32868817 Peri. 345.03048 -0.47173053 +0.88131498
 a 2.0794413 Node 256.81633 -0.80605742 -0.44365473
 e 0.4714062 Incl. 1.61632 -0.35740978 -0.16264802
 P 3.00 H 23.9 G 0.15 U 7

Residuals in seconds of arc

100605	703	0.2-	0.7-	100605	J04	0.5+	0.1-	100606	H36	0.2+	0.5+
100605	703	0.4-	0.0	100606	I19	0.0	0.4+	100606	H36	0.7+	0.1-
100605	703	0.4+	0.2+	100606	I19	0.1-	0.0	100606	H10	0.4+	0.0
100605	703	0.5-	0.2-	100606	I19	0.0	1.0+	100606	H36	0.1+	0.4-
100605	703	0.7+	0.3+	100606	I19	0.1-	0.6-	100606	H10	0.1+	1.1+
100605	J04	0.2-	0.0	100606	I19	0.2+	0.1+	100606	H10	0.1-	0.1+
100605	J04	0.1+	0.3+	100606	I19	0.1-	0.3-	100606	695	0.1+	0.0
100605	J04	0.2-	0.1-	100606	703	1.2-	0.9-	100606	695	0.4+	0.0
100605	J04	0.2+	0.1+	100606	703	1.1-	0.9-	100606	695	0.1+	0.1-

Ephemeris:
 2010 LF14 a,e,i = 2.08, 0.47, 2 q = 1.0992

Date	TT	R. A. (2000)	Decl.	Delta	r	Elong.	Phase	V
2010 06 03		15 26.50	-20 53.1	0.0932	1.103	162.2	16.3	19.8
2010 06 13		16 44.38	-21 04.6	0.104	1.119	170.6	8.6	19.8
2010 06 23		17 42.11	-19 56.8	0.129	1.145	173.5	5.8	20.2
2010 07 03		18 19.41	-18 48.2	0.164	1.180	172.3	6.6	20.8
2010 07 13		18 43.32	-18 04.5	0.210	1.223	168.8	9.3	21.6
2010 07 23		19 00.14	-17 42.6	0.265	1.272	163.7	13.0	22.3
2010 08 02		19 13.65	-17 33.1	0.331	1.327	157.6	16.9	23.0

Carl W. Hergenrother (C) Copyright 2010 MPC M.P.E.C. 2010-L24



Display MPEC number: Clear

Enter an [MPEC](#) number in one of the following forms:

- 1997-B01 (the full form)
- J97B01 (the packed version of the full form)
- B01 (the abbreviated form)

YAHOO!
BABEL FISH

Choose a language to translate this page!

Select to language

Google Translate

Select Language

Gadgets powered by Google

