

[Printer-friendly version](#)



Search MPC/CBAT

IAU Minor Planet Center

MPC Operations Status

Preparing **MPCs** ([Info](#))

ECS: Accessible

Observer Services (NEOs)

- NEO Services Overview
- NEO Confirmation
- NEO Confirmation (RA order)
- NEO Ratings
- NEO Page
- NEO Observation Planning Aid
- NEOChecker
- NEOCMTChecker

Observer Services

- Services Overview
- IAUMail
- Minor Planet & Comet Ephem.
- Natural Satellite Ephemerides
- New Object Ephemerides
- MPCChecker
- CMTChecker
- Distant Artificial Satellites
- Observing List Customizer
- Sky Coverage

Orbital Elements

- Orbital Elements Overview
- MPCORB
- Orbital Elements for Programs
- MPCAT
- MPCUPDATE

Astrometric Observations

- MPCAT-OBS
- MPCOBS

Publications

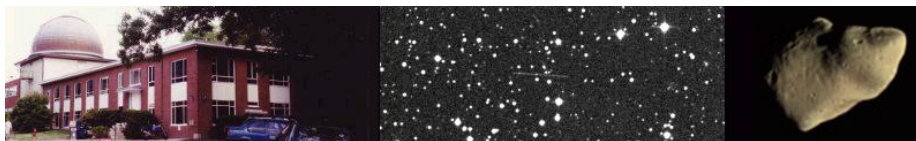
- Publications Overview
- MPECs
- MPC Archive
- MPC RSS Feeds
- CBAT RSS Feeds

Documentation

- Documentation Overview
- Minor Body Astrometry
- MPC Status Page
- What's New

Lists and Plots

- Lists and Plots Overview
- Minor Planets



MPEC 2010-K33 : 2010 KB8

The following [Minor Planet Electronic Circular](#) may be linked-to from your own Web pages, but must **not** otherwise be [redistributed electronically](#).

A form allowing access to any MPEC is at [the bottom of this page](#).



[Read MPEC 2010-K32](#)



[Read MPEC 2010-K34](#)

M.P.E.C. 2010-K33

Issued 2010 May 21, 01:54 UT

The Minor Planet Electronic Circulars contain information on unusual minor planets and routine data on comets. They are published on behalf of Commission 20 of the International Astronomical Union by the Minor Planet Center, Smithsonian Astrophysical Observatory, Cambridge, MA 02138, U.S.A.

Prepared using the [Tamkin Foundation Computer Network](#)

MPC@CFA.HARVARD.EDU

URL <http://www.minorplanetcenter.org/iau/mpc.html>

ISSN 1523-6714

2010 KB8

Observations:

K10K08B*	C2010	05	19.34491	16	25	29.85	-14	16	19.2	18.0	V	EK033703
K10K08B	C2010	05	19.35073	16	25	24.88	-14	15	41.3	19.4	V	EK033703
K10K08B	C2010	05	19.35659	16	25	20.10	-14	15	02.5	19.2	V	EK033703
K10K08B	C2010	05	19.36242	16	25	15.31	-14	14	25.4	18.9	V	EK033703
K10K08B	C2010	05	19.36827	16	25	10.38	-14	13	46.8	18.7	V	EK033703
K10K08B	C2010	05	19.40638	16	24	38.44	-14	09	36.6	18.5	V	EK033703
K10K08B	C2010	05	19.40706	16	24	37.90	-14	09	31.8	18.5	V	EK033703
K10K08B	C2010	05	19.40777	16	24	37.29	-14	09	28.0	18.5	V	EK033703
K10K08B	C2010	05	19.40845	16	24	36.61	-14	09	21.9	17.9	V	EK033703
K10K08B	C2010	05	19.40912	16	24	36.21	-14	09	19.0	17.9	V	EK033703
K10K08B	C2010	05	19.42167	16	24	25.55	-14	07	52.3	19.1	R	EK033651
K10K08B	C2010	05	19.42229	16	24	24.93	-14	07	48.0	19.0	R	EK033651
K10K08B	C2010	05	19.42292	16	24	24.50	-14	07	44.9	19.0	R	EK033651
K10K08B	C2010	05	20.146695	16	13	01.50	-12	31	06.4	18.0	V	EK033H21
K10K08B	C2010	05	20.149689	16	12	57.98	-12	30	37.5	18.1	V	EK033H21
K10K08B	C2010	05	20.151601	16	12	55.72	-12	30	19.4	18.2	V	EK033H21
K10K08B	C2010	05	20.28149	16	10	20.42	-12	08	28.1	18.2	V	EK033G96
K10K08B	C2010	05	20.28186	16	10	19.92	-12	08	24.2	18.2	V	EK033G96
K10K08B	C2010	05	20.28224	16	10	19.48	-12	08	20.1	18.0	V	EK033G96
K10K08B	JC2010	05	20.32877	16	09	19.84	-12	00	08.5	18.8	C	EK033695
K10K08B	JC2010	05	20.32948	16	09	18.93	-12	00	01.1	18.5	C	EK033695
K10K08B	JC2010	05	20.33018	16	09	17.98	-11	59	53.1	19.0	C	EK033695
K10K08B	JC2010	05	20.33089	16	09	17.08	-11	59	45.8	18.6	C	EK033695
K10K08B	KC2010	05	20.99415	15	52	37.52	-09	34	09.1	18.1	R	EK033B04
K10K08B	KC2010	05	21.00017	15	52	26.21	-09	32	31.4	17.9	R	EK033B04
K10K08B	KC2010	05	21.00086	15	52	24.89	-09	32	19.8	18.0	R	EK033B04
K10K08B	KC2010	05	21.00827	15	52	10.92	-09	30	18.4	18.0	R	EK033B04

Observer details:

[651 Grasslands Observatory, Tucson.](#) Observer J. E. McGaha. 0.62-m f/5.1 Newtonian reflector + CCD.

[695 Kitt Peak.](#) Observers M. Trueblood, G. Stringfellow, R. Crawford. Measurer R. Crawford. 0.9-m f/8 Ritchey-Chretien + CCD.

- Comets
- Animations
- General Information**
- Astronomical Headlines
- Press Information Sheets
- General**
- Contact Us
- Index
- Site Map
- Search Site
- Tech Info
- Documentation
- Links**
- Minor Planet Center
- Central Bureau for Astro. Tel.
- International Comet Quarterly*
- Smithsonian Astro. Obs.

[703 Catalina Sky Survey.](#) Observer A. Boattini. Measurers J. D. Ahern, E. C. Beshore, A. Boattini, G. J. Garradd, A. R. Gibbs, A. D. Grauer, R. E. Hill, R. A. Kowalski, S. M. Larson, R. H. McNaught. 0.68-m Schmidt + CCD.

B04 OAVdA, Saint-Barthelemy. Observer A. Carbognani. 0.81-m f/7.9 reflector + CCD.

[G96 Mt. Lemmon Survey.](#) Observer R. A. Kowalski. Measurers J. D. Ahern, E. C. Beshore, A. Boattini, G. J. Garradd, A. R. Gibbs, A. D. Grauer, R. E. Hill, R. A. Kowalski, S. M. Larson, R. H. McNaught. 1.5-m reflector + CCD.

H21 Astronomical Research Observatory, Westfield. Observer R. Holmes. Measurer S. Foglia.

Orbital elements:
 2010 KB8 Earth [MOID](#) = 0.0070 AU
 Epoch 2010 July 23.0 TT = JDT 2455400.5 MPC

M	10.25244	(2000.0)	P	Q
n	0.62277066	Peri. 301.36444	+0.96571044	-0.25769848
a	1.3580548	Node 73.58511	+0.24796927	+0.87954785
e	0.8227497	Incl. 1.88429	+0.07690631	+0.39998385
P	1.58	H 23.9	G 0.15	U 9

Residuals in seconds of arc

100519 703	1.3+	0.2+	100519 703	0.8+	1.2-	100520 G96	0.7-	0.1-
100519 703	1.1-	0.6+	100519 651	0.6+	0.0	100520 695	0.1+	0.0
100519 703	0.0	1.5+	100519 651	0.8-	0.1+	100520 695	0.3+	0.3-
100519 703	0.7+	0.7+	100519 651	0.8+	1.1-	100520 695	0.2-	0.2+
100519 703	0.2-	1.2+	100520 H21	0.8+	0.3-	100520 695	0.1+	0.1-
100519 703	0.4-	0.4-	100520 H21	0.5+	0.0	100520 B04	0.1+	0.2+
100519 703	0.1+	0.2-	100520 H21	0.3+	0.2-	100521 B04	0.2+	0.1-
100519 703	0.1-	1.1-	100520 G96	0.9-	0.4-	100521 B04	0.1-	0.2+
100519 703	1.6-	0.4+	100520 G96	1.3-	0.3-	100521 B04	0.2+	0.3+

Ephemeris:
 2010 KB8 a,e,i = 1.36, 0.82, 2 q = 0.2407

Date	TT	R. A. (2000)	Decl.	Delta	r	Elong.	Phase	V
2010 05 14		16 57.29	-18 27.8	0.159	1.159	157.5	19.5	21.2
2010 05 15		16 54.35	-18 04.8	0.142	1.145	159.1	18.4	20.9
2010 05 16		16 50.59	-17 35.4	0.126	1.130	160.9	17.0	20.6
2010 05 17		16 45.68	-16 57.0	0.109	1.116	162.9	15.5	20.2
2010 05 18		16 39.05	-16 04.6	0.0931	1.102	165.1	13.6	19.7
2010 05 19		16 29.69	-14 49.2	0.0770	1.087	167.7	11.5	19.2
2010 05 20		16 15.62	-12 52.1	0.0612	1.072	170.0	9.4	18.6
2010 05 21		15 52.49	-09 30.2	0.0460	1.057	169.4	10.1	18.0
2010 05 22		15 09.00	-02 47.4	0.0319	1.042	159.3	20.0	17.5
2010 05 23		13 33.31	+11 59.3	0.0215	1.027	131.8	47.3	17.4
2010 05 24		10 33.95	+29 47.9	0.0211	1.011	86.4	92.4	18.8
2010 05 25		08 16.39	+32 07.2	0.0311	0.996	56.4	122.2	21.4
2010 05 26		07 14.55	+30 05.2	0.0450	0.980	42.3	136.0	23.5

Carl W. Hergenrother (C) Copyright 2010 MPC M.P.E.C. 2010-K33



Display MPEC number: Clear

- Enter an [MPEC](#) number in one of the following forms:
- 1997-B01 (the full form)
 - J97B01 (the packed version of the full form)
 - B01 (the abbreviated form)

YAHOO!
BABEL FISH

Choose a language to translate this page!

Select to language

Google Translate

Select Language

[Gadgets powered by Google](#)

