

[Printer-friendly version](#)



IAU Minor Planet Center

MPC Operations Status

Processing ([Info](#))

ECS: Accessible

Observer Services (NEOs)

- NEO Services Overview
- NEO Confirmation
- NEO Confirmation (RA order)
- NEO Ratings
- NEO Page
- NEO Observation Planning Aid
- NEOChecker
- NEOCMTChecker

Observer Services

- Services Overview
- IAUMail
- Minor Planet & Comet Ephem.
- Natural Satellite Ephemerides
- New Object Ephemerides
- MPCChecker
- CMTChecker
- Distant Artificial Satellites
- Observing List Customizer
- Sky Coverage

Orbital Elements

- Orbital Elements Overview
- MPCORB
- Orbital Elements for Programs
- MPCAT
- MPCUPDATE

Astrometric Observations

- MPCAT-OBS
- MPCOBS

Publications

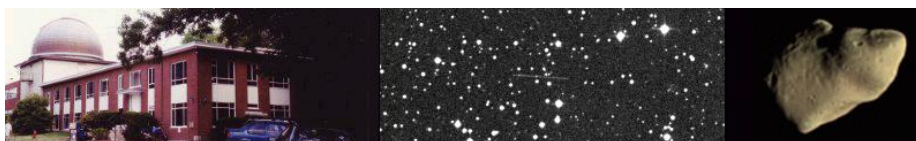
- Publications Overview
- MPECs
- MPC Archive
- MPC RSS Feeds
- CBAT RSS Feeds

Documentation

- Documentation Overview
- Minor Body Astrometry
- MPC Status Page
- What's New

Lists and Plots

- Lists and Plots Overview
- Minor Planets



MPEC 2010-K14 : DAILY ORBIT UPDATE (2010 MAY 19 UT)

The following [Minor Planet Electronic Circular](#) may be linked-to from your own Web pages, but must **not** otherwise be [redistributed electronically](#).

A form allowing access to any MPEC is at [the bottom of this page](#).



[Read MPEC 2010-K13](#)



[Read MPEC 2010-K15](#)

M.P.E.C. 2010-K14

Issued 2010 May 19, 06:10 UT

The Minor Planet Electronic Circulars contain information on unusual minor planets and routine data on comets. They are published on behalf of Commission 20 of the International Astronomical Union by the Minor Planet Center, Smithsonian Astrophysical Observatory, Cambridge, MA 02138, U.S.A.

Prepared using the [Tamkin Foundation Computer Network](#)

MPC@CFA.HARVARD.EDU

URL <http://www.minorplanetcenter.org/iau/mpc.html> ISSN 1523-6714

DAILY ORBIT UPDATE (2010 MAY 19 UT)

Update to [MPEC 2010-K13](#)

Full-precision elements for the objects listed here are available at <ftp://cfa-ftp.harvard.edu/pub/MPCORB/>

New identification:

J97C16D	K08CK9W	MPCW
J98R42H	K07X56O	MPCW
J99TD7L	K10F57T	MPCW
K00SC7X	J90S22X	MPCW
K00SK2E	K07VX4M	MPCW
K01B05E	K10GC3L	MPCW
K01FB8X	K07X58R	MPCW
K01R39P	K08AD5E	MPCW
K01T16C	K10D53F	MPCW
K01XD3O	K08AD5N	MPCW
K01XF4G	K08B51Q	MPCW
K02G88W	K08B51N	MPCW
K02J48J	K07Y72X	MPCW
K02PJ2A	K10J77P	MPCW
K02Q10W	K08AD7J	MPCW
K02QB1U	K07Y73L	MPCW
K02QC4T	K10GG0X	MPCW
K02TB2R	K07Y71W	MPCW
K02TT4C	K07Y71H	MPCW
K02VE0W	K07VX2A	MPCW
K02W30O	K07VX1W	MPCW
K02X49H	K08AD5S	MPCW
K03A24U	K07VX3X	MPCW
K03A64L	K07W61S	MPCW
K03B04G	K07W63D	MPCW
K03D11L	K08AD7L	MPCW
K03FC1L	K10H78Q	MPCW
K03S91D	K07W59P	MPCW

Comets
Animations
General Information
Astronomical Headlines
Press Information Sheets
General
Contact Us
Index
Site Map
Search Site
Tech Info
Documentation
Links
Minor Planet Center
Central Bureau for Astro. Tel.
<i>International Comet Quarterly</i>
Smithsonian Astro. Obs.

K03SN1R	K07VX0X		MPCW
K03W02C	K07VX1D		MPCW
K03Y12V	K07Tj3C		MPCW
K03Y65Z	K07VX3Y		MPCW
K03Y88Z	K07Tj2K		MPCW
K03Y95F	K07UE1Y	K10GF0N	MPCW
K04B64Y	K07UE2E		MPCW
K04B65D	K07VX3V		MPCW
K04B80T	K07VX4E		MPCW
K04C03Y	K08CK9H		MPCW
K04C63Z	K10GE6E		MPCW
K04E39R	K07Y73A		MPCW
K04E47M	K08AD4H		MPCW
K04E86E	K07Y71C		MPCW
K04F31W	K07Y71T		MPCW
K04F82D	J96G07G	K08CI6X	MPCW
K05JI2L	K07Y73H		MPCW
K05L18S	K07W62M		MPCW
K05N60J	K07VX3P		MPCW
K05QG9J	K08B52M		MPCW
K05Uh9W	K07X59N		MPCW
K06S43B	K08B52Q		MPCW
K06SL4E	K07VX3T		MPCW
K06U49D	K07Y34V		MPCW
K06VA6W	K07Y72Z		MPCW
K07P07S	K10D48C		MPCS
K07P14L	K10J43X		MPCW
K07RM7B	K10GA6D		MPCW
K07RN6M	K00Q49X	K10JB1D	MPCW
K07RW6A	K01UG6S		MPCW
K07Tj2L	K10GA4P		MPCW
K07Tj2N	J96T34Q	K04H70Q	MPCW
K07Tj2Y	K03Q80S	K09C31W	MPCW
K07Tj3B	K03U38G		MPCW
K07UE1P	K04FA4C		MPCW
K07UE2C	K04CB4W		MPCW
K07UE2F	K03Ua4T		MPCW
K07VJ3J	K06SK7W		MPCW
K07VM6Z	J99B32G		MPCW
K07VQ9J	K03Sd1A		MPCW
K07VW9Y	K03B05J		MPCW
K07VX0C	K01TF6N		MPCW
K07VX0G	K05J83Y		MPCW
K07VX0J	K03R03O		MPCW
K07VX1C	J97Y12Y		MPCW
K07VX1F	K09H35H	K10H52U	MPCW
K07VX1G	K05JA5U		MPCW
K07VX1R	K02TY0Z		MPCW
K07VX1V	K09H11W		MPCW
K07VX1Z	K10F78Z		MPCW
K07VX2B	K03X42G		MPCW
K07VX2C	K00GI4P	K04C67D	MPCW
K07VX2K	K10D53W		MPCW
K07VX2O	K05G62G		MPCW
K07VX2Q	K10G84W		MPCW
K07VX2S	K09F54A		MPCW
K07VX2Y	K02S61V		MPCW
K07VX3A	K09H92V		MPCW
K07VX3K	K01B81T		MPCW
K07VX3M	K05ER1L		MPCW
K07VX3Q	K06SR7R		MPCW
K07VX3R	K03Y18O		MPCW
K07VX3S	K04EB2F		MPCW
K07VX4C	K04C90L		MPCW
K07VX4D	K02S03C		MPCW
K07VX4K	K06R40O		MPCW
K07VX4N	J99G62G		MPCW
K07VX4U	K06HC3W	K09F35E	MPCW
K07VX4Y	K02TR7G	K06W05B	MPCW
K07W21E	K00AL7W		MPCW
K07W62S	K01TF7X		MPCW
K07W63H	K06R12G		MPCW
K07W63N	K01S05G		MPCW
K07W63Q	K10JC2R		MPCW
K07X56N	K04N32R	K10J62Z	MPCW
K07X56U	K02S73P		MPCW
K07X57L	K00Y14H		MPCW

K07X57M	K05E06N		MPCW
K07X57S	K10J11T		MPCW
K07X57T	K10G80J		MPCW
K07X57W	K00U21L		MPCW
K07X57Y	K06QG9L		MPCW
K07X57Z	K04B21J		MPCW
K07X58A	K09F37Q		MPCW
K07X58L	J94R02H	K10F78X	MPCW
K07X58N	K03UC3L		MPCW
K07X58X	K06Q12K		MPCW
K07X59B	K06SQ4E		MPCW
K07Y70Y	K05EL1N		MPCW
K07Y70Z	K01C34R		MPCW
K07Y71E	K10G79Q		MPCW
K07Y71N	K04F73V	K09H11Z	MPCW
K07Y71R	K00T20U		MPCW
K07Y71S	J98S18N		MPCW
K07Y71Z	K04B32L		MPCW
K07Y72C	K10G84S		MPCW
K07Y72D	K10F75B		MPCW
K07Y72L	K06QH8M		MPCW
K07Y72M	K10J60B		MPCW
K07Y73C	K03E44B		MPCW
K07Y73N	K05N48F		MPCW
K07Y74D	K04BA4P		MPCW
K07Y74H	K03WG9F		MPCW
K07Y74K	K06UG8A		MPCW
K08AD5A	K04F65J		MPCW
K08AD5G	K04H24Y		MPCW
K08AD5O	J94X03E	K04C63S	MPCW
K08AD5X	K02X34E	K06S44Q	MPCW
K08AD6E	K06S46L		MPCW
K08AD6J	K00T65P		MPCW
K08AD6K	K10G92M		MPCW
K08AD6M	K01Y57P		MPCW
K08AD6T	K09H83Y		MPCW
K08AD7D	J99U60A		MPCW
K08AD7E	K02TJ8O		MPCW
K08B40B	K05GB1K		MPCW
K08B41P	K01K77W		MPCW
K08B45C	K01Y56V		MPCW
K08B51M	J93T35O		MPCW
K08B52B	J94T13W		MPCW
K08B52N	K02TY3B	K04B32U	MPCW
K08B52O	J97E15G		MPCW
K08CI8U	K04F43K		MPCW
K08CK9C	K03B89V		MPCW
K08CK9Q	K02A94E		MPCW
K08CK9V	K06QF7F		MPCW
K08CK9Y	K01Y05K		MPCW
K08D49Q	K04C66O		MPCW
K08UU2L	K04Y37G		MPCW
K09F73O	K07VX2R		MPCW
K10E87T	K03UH5Y		MPCW
K10G27E	K04CB2F		MPCW
K10G31Y	K03K10Z		MPCW
K10G66N	K03UF4S		MPCW
K10G71Z	K02C07D	K03F78R	MPCW
K10G75L	K03K36U	K08AD6P	MPCW
K10G75M	K02CJ3Q	K08X17Z	MPCW
K10G97O	K07UE2D	K06C67B	MPCW
K10GG1D	K03J10N		MPCW
K10H14X	K08B51J		MPCW
K10H67S	K07VX3O		MPCW
K10H70A	K08B52J		MPCW
K10H83S	K07VX1H		MPCW
K10HA8Y	K01DA9Z		MPCW
K10J71U	K03UB5J		MPCW
K10J79B	K06G43K		MPCW
K10J79J	K08YD1E		MPCW
K10J82Y	K07RN5C		MPCW
K10J84J	K01SW6F	K04S21R	MPCW

New double designation:

K04EB2F	K04E93O	MPCW
K07RN6M	K07RS2B	MPCW
K07Y74K	K08EG4P	MPCW

K08UU2L K09BJ0J
K10H78Q K10F91V

MPCW
MPCW

New multiple-opposition orbits:

Object	H	G	Epoch	M	Peri.	Node	Incl.	e	a	Opp	C
J92H03T	15.0	0.15	K107N	345.414	185.070	47.387	37.073	0.09679	2.72246	5	X
J94C11A	15.9	0.15	K107N	55.993	72.582	90.673	3.552	0.27532	2.99505	5	X
J95U14D	15.7	0.15	K107N	344.708	66.129	204.674	10.868	0.20917	3.09978	4	X
J95W04E	18.2	0.15	K107N	343.019	209.389	94.374	6.350	0.31826	2.12365	4	X
J96T46R	15.8	0.15	K107N	320.274	75.862	222.634	10.608	0.10204	2.99717	6	X
J97C16D	16.2	0.15	K107N	204.121	299.373	149.243	17.924	0.16224	3.12034	3	X
J98R11D	16.1	0.15	K107N	359.292	68.532	186.073	13.024	0.13231	2.66259	6	X
J98R42H	16.1	0.15	K107N	252.185	69.689	339.102	11.834	0.19311	2.61084	4	X
J99B30D	17.2	0.15	K107N	326.577	193.907	109.229	4.776	0.15261	2.24585	6	X
J99TA7R	14.4	0.15	K107N	111.378	155.151	237.141	8.542	0.29384	3.96342	3	X
J99TD7L	15.9	0.15	K107N	328.031	238.454	15.088	14.967	0.02810	2.60378	3	X
J99V84R	16.2	0.15	K107N	57.530	314.803	226.423	11.213	0.11212	2.62883	5	X
J99X74J	15.5	0.15	K107N	140.770	214.308	250.776	13.937	0.08254	2.65871	4	X
K00EA4F	18.9	0.15	K107N	238.714	346.740	66.410	10.817	0.41777	1.14758	6	X
K00J60W	17.8	0.15	K107N	8.107	343.608	272.157	1.898	0.30062	2.23380	3	X
K00J72A	17.4	0.15	K107N	348.144	224.397	66.112	7.238	0.29459	2.22495	4	X
K00S52D	16.7	0.15	K107N	329.553	72.811	218.293	5.172	0.10784	2.33719	6	X
K00SC7X	17.0	0.15	K107N	343.893	348.482	40.239	4.438	0.17630	2.21656	4	X
K00SG80	16.3	0.15	K107N	314.993	60.073	255.996	5.366	0.13701	2.34164	4	X
K00SK2E	17.7	0.15	K107N	351.366	219.125	140.923	1.221	0.10563	2.22311	6	X
K00V24S	17.2	0.15	K107N	303.563	108.422	218.818	5.692	0.14189	2.35822	4	X
K01B05E	16.8	0.15	K107N	62.248	103.700	38.326	25.568	0.31223	2.65557	3	X
K01F17G	16.1	0.15	K107N	32.045	355.069	211.807	1.103	0.21805	2.68644	6	X
K01F75S	15.8	0.15	K107N	46.904	7.068	173.692	12.359	0.11439	2.69860	6	X
K01FB8X	16.6	0.15	K107N	171.114	244.023	279.536	8.393	0.10782	2.43710	6	X
K01FC0G	16.5	0.15	K107N	359.458	237.261	20.084	6.286	0.11151	2.68103	6	X
K01G11V	15.9	0.15	K107N	20.442	181.373	47.366	14.788	0.19671	2.67674	7	X
K01O21J	15.9	0.15	K107N	5.645	148.763	159.255	15.508	0.33737	2.73682	4	S
K01QB0Q	16.3	0.15	K107N	316.704	161.927	142.789	2.422	0.09718	2.91851	6	X
K01R39P	17.7	0.15	K107N	12.104	96.211	318.166	15.614	0.12886	1.98452	3	X
K01R66F	16.5	0.15	K107N	8.529	104.146	195.850	15.238	0.38751	2.74646	3	S
K01SE7Q	16.9	0.15	K107N	254.751	163.071	215.343	7.196	0.14490	2.18127	3	W
K01T16C	14.9	0.15	K107N	200.827	281.914	130.599	10.953	0.12113	3.07073	2	W
K01TI0H	14.8	0.15	K107N	234.711	128.736	252.921	8.084	0.11562	3.05938	6	X
K01UA8Z	16.5	0.15	K107N	198.310	197.202	217.347	5.640	0.15824	2.26717	7	X
K01UD0P	17.0	0.15	K107N	314.240	262.286	54.710	3.740	0.15834	2.18561	4	X
K01VB10	14.8	0.15	K107N	278.655	94.138	250.241	9.507	0.15694	3.07836	4	X
K01W06D	14.7	0.15	K107N	316.727	72.326	224.934	16.135	0.16021	3.03977	4	X
K01XD30	15.4	0.15	K107N	206.749	349.222	88.254	10.809	0.10517	3.09331	2	W
K01XF4G	15.6	0.15	K107N	243.921	313.936	88.275	12.510	0.10388	3.09817	3	X
K01XQ3M	15.4	0.15	K107N	312.933	73.430	232.363	8.532	0.10223	3.09559	7	X
K01YE8S	16.3	0.15	K107N	54.352	134.431	70.229	5.540	0.06760	2.31806	6	X
K02A52E	16.6	0.15	K107N	105.425	231.069	265.324	4.847	0.06611	2.36712	7	X
K02A70J	16.4	0.15	K107N	78.516	72.258	78.053	8.884	0.17086	2.37078	4	X
K02AI6D	16.1	0.15	K107N	79.872	111.577	52.731	7.619	0.07773	2.36435	4	X
K02C32T	16.4	0.15	K107N	27.305	110.604	110.600	10.964	0.04923	2.38799	6	X
K02C33F	16.0	0.15	K107N	6.473	128.184	109.311	12.795	0.24062	2.44629	4	X
K02C53B	17.0	0.15	K107N	53.966	174.584	17.510	1.811	0.10690	2.39746	6	X
K02CD5Y	17.3	0.15	K107N	47.439	320.227	234.180	3.373	0.15051	2.41265	6	X
K02CO2D	17.2	0.15	K107N	9.381	339.293	262.953	1.525	0.15191	2.44761	5	X
K02G88W	16.9	0.15	K107N	143.925	210.269	72.519	6.528	0.09462	2.17622	5	X
K02J00D	16.7	0.15	K107N	35.088	328.662	238.032	20.028	0.03921	1.92295	5	X
K02J48J	16.9	0.15	K107N	151.863	221.974	35.039	6.826	0.15466	2.21871	5	X
K02J74T	16.6	0.15	K107N	21.294	182.919	41.813	6.117	0.14121	2.52471	4	X
K02JA2N	15.8	0.15	K107N	0.842	180.913	68.530	13.167	0.11314	2.52941	5	X
K02JA3W	15.9	0.15	K107N	71.149	303.163	223.358	10.860	0.10098	2.53219	6	X
K02JA5W	15.6	0.15	K107N	319.647	102.021	222.550	7.719	0.27169	2.53792	6	X
K02L02Y	16.9	0.15	K107N	197.298	263.309	258.402	4.727	0.12599	2.28901	6	X
K02L11C	15.7	0.15	K107N	298.242	102.758	233.139	13.452	0.24952	2.56728	4	X
K02L43Y	15.7	0.15	K107N	314.632	101.075	226.466	10.360	0.29302	2.60827	5	X
K02L59T	16.0	0.15	K107N	30.498	326.422	252.559	12.518	0.11966	2.53079	6	X
K02N38X	15.6	0.15	K107N	313.379	122.748	208.473	12.914	0.19652	2.56198	5	X
K02N67T	15.9	0.15	K107N	10.749	21.680	221.915	13.012	0.19678	2.61920	6	X
K02P87O	16.9	0.15	K107N	355.940	144.342	132.111	24.672	0.07382	1.96766	4	X
K02P93P	15.2	0.15	K107N	326.703	61.462	244.120	12.680	0.21840	2.64807	4	X
K02PJ2A	17.3	0.15	K107N	320.087	138.809	172.133	12.822	0.14726	2.61966	4	X
K02Q10W	16.7	0.15	K107N	155.380	303.242	289.968	5.773	0.07846	2.33892	7	X
K02Q46T	15.9	0.15	K107N	345.743	31.736	249.474	6.838	0.19519	2.64288	5	X
K02QB1U	17.1	0.15	K107N	178.389	248.779	303.443	5.774	0.05514	2.40419	4	X
K02QC4T	16.2	0.15	K107N	14.210	106.459	115.855	10.163	0.12020	2.68994	2	W
K02QC6Y	16.8	0.15	K107N	327.249	164.486	134.806	12.873	0.11849	2.65482	3	X
K02RP5H	16.7	0.15	K107N	221.155	242.282	144.897	8.414	0.22355	2.77466	4	X

K02RQ0X	15.7	0.15	K107N	25.478	126.266	94.697	12.375	0.13141	2.70701	5 X
K02T09N	15.8	0.15	K107N	310.499	298.866	31.636	7.351	0.23459	2.67394	7 X
K02TB2R	16.4	0.15	K107N	270.232	50.053	330.587	12.098	0.19835	2.68587	4 X
K02TB6C	15.6	0.15	K107N	332.930	63.921	236.000	12.334	0.26708	2.66271	5 X
K02TN0T	15.6	0.15	K107N	311.643	278.257	51.982	16.665	0.26267	2.63417	4 X
K02TT4C	16.5	0.15	K107N	254.921	25.447	25.752	6.821	0.13863	2.68057	4 X
K02U27H	16.2	0.15	K107N	220.025	60.917	37.604	12.292	0.08457	2.68257	5 X
K02VE0C	15.5	0.15	K107N	304.762	294.395	16.588	14.568	0.21862	2.79740	4 X
K02VE0W	16.5	0.15	K107N	258.794	326.928	88.456	15.345	0.04705	2.72204	2 W
K02W30O	16.7	0.15	K107N	224.751	14.315	65.879	4.340	0.06929	2.76691	4 X
K02X49H	16.8	0.15	K107N	224.622	356.675	79.065	10.405	0.24029	2.80007	2 W
K03A24U	14.8	0.15	K107N	190.349	330.580	90.820	11.461	0.09479	3.00136	5 X
K03A64L	15.4	0.15	K107N	195.603	47.630	53.317	13.534	0.12518	2.88652	4 X
K03B04G	15.9	0.15	K107N	52.858	272.783	282.740	8.000	0.02808	3.18932	2 W
K03D11L	15.8	0.15	K107N	162.923	25.328	144.365	5.744	0.04428	2.90223	6 X
K03FA7A	17.4	0.15	K107N	19.507	163.460	70.537	5.738	0.18425	2.27989	4 X
K03FC1L	17.2	0.15	K107N	53.624	10.281	181.586	3.860	0.08611	2.24767	3 X
K03G17D	16.7	0.15	K107N	22.129	325.152	249.261	6.236	0.23851	2.31025	2 X
K03H14Y	17.6	0.15	K107N	49.129	135.709	58.224	6.459	0.18775	2.28162	4 X
K03J04E	18.1	0.15	K107N	3.833	175.120	87.888	10.051	0.31992	2.31134	2 X
K03J10C	16.5	0.15	K107N	334.046	222.273	69.384	7.525	0.10787	2.27785	7 X
K03K18R	17.9	0.15	K107N	336.628	86.028	244.647	5.582	0.48314	2.34251	4 X
K03P05H	16.4	0.15	K107N	342.601	339.759	293.230	4.605	0.21048	2.39436	5 X
K03Q67P	16.7	0.15	K107N	285.612	152.361	199.368	3.856	0.22196	2.41339	5 X
K03S33Y	16.7	0.15	K107N	317.936	278.387	43.523	3.655	0.24423	2.41611	4 X
K03S91D	17.9	0.15	K107N	327.558	258.872	72.741	3.338	0.19113	2.37893	4 X
K03SC9Q	17.6	0.15	K107N	359.215	209.097	52.074	2.032	0.15415	2.44983	4 X
K03SN1R	17.3	0.15	K107N	295.920	281.393	94.362	3.548	0.19628	2.38817	3 X
K03U13T	17.2	0.15	K107N	293.613	274.422	53.894	22.375	0.05772	1.87738	4 X
K03U19V	18.6	0.15	K107N	313.521	124.142	215.177	33.469	0.08014	1.48852	3 X
K03U75Y	16.2	0.15	K107N	80.437	295.197	219.528	11.901	0.13939	2.66067	4 X
K03UC6T	15.7	0.15	K107N	13.049	342.690	259.759	8.338	0.11464	2.58114	6 X
K03UM9U	15.5	0.15	K107N	169.924	204.402	227.313	21.331	0.04255	2.65840	7 X
K03Uc0O	17.6	0.15	K107N	153.935	178.317	66.976	3.542	0.10979	2.18582	5 X
K03W02C	17.8	0.15	K107N	261.466	210.297	238.778	0.615	0.15515	2.39375	3 X
K03W89A	15.7	0.15	K107N	314.783	85.092	221.047	11.652	0.13867	2.58538	4 X
K03WA2G	17.9	0.15	K107N	324.674	231.799	60.586	20.808	0.05277	1.89534	3 X
K03X23A	16.2	0.15	K107N	33.949	319.358	254.752	13.811	0.09960	2.67521	5 X
K03Y12V	15.3	0.15	K107N	289.129	310.564	47.121	13.833	0.20268	2.58672	3 X
K03Y65Z	16.2	0.15	K107N	269.022	299.525	86.240	12.395	0.12606	2.54893	3 X
K03Y88Z	15.9	0.15	K107N	270.439	140.470	231.002	4.765	0.29398	2.57019	3 X
K03Y95F	15.5	0.15	K107N	26.328	12.265	253.388	13.476	0.11491	2.58651	8 X
K04B64Y	17.2	0.15	K107N	218.400	343.897	92.918	4.161	0.18018	2.63401	3 X
K04B65D	17.0	0.15	K107N	272.929	312.388	110.053	12.615	0.10316	2.52527	4 X
K04B80T	16.8	0.15	K107N	160.813	233.485	316.240	5.329	0.08442	2.55547	4 X
K04B82L	15.2	0.15	K107N	64.543	239.324	264.027	8.892	0.17312	3.09087	4 X
K04B84R	15.5	0.15	K107N	25.332	299.198	247.649	11.701	0.25827	3.15514	5 X
K04B86V	16.3	0.15	K107N	213.725	227.334	253.204	6.592	0.16758	2.58767	3 X
K04C03Y	17.1	0.15	K107N	186.803	45.428	134.782	28.494	0.22549	2.53718	3 X
K04C63Z	15.6	0.15	K107N	49.306	48.103	119.583	17.580	0.16869	3.11721	3 X
K04D49Y	16.4	0.15	K107N	33.553	58.339	147.928	8.445	0.23218	3.07153	3 X
K04E04B	15.5	0.15	K107N	70.953	95.039	48.522	22.174	0.24773	3.14575	3 X
K04E39R	16.8	0.15	K107N	129.594	233.784	347.278	11.496	0.03417	2.64068	3 X
K04E47M	18.1	0.15	K107N	194.176	101.824	43.253	2.927	0.22888	2.63998	3 X
K04E66N	15.0	0.15	K107N	33.498	107.260	91.670	14.680	0.24133	3.17075	4 X
K04E86E	15.8	0.15	K107N	191.085	96.573	22.615	13.109	0.06810	2.75367	3 X
K04F31W	16.1	0.15	K107N	183.198	116.024	353.918	8.887	0.08959	2.85229	6 X
K04F82D	16.7	0.15	K107N	243.737	69.850	32.025	9.811	0.16772	2.58021	3 W
K04FE8P	15.1	0.15	K107N	45.064	108.778	85.381	18.292	0.09231	3.15758	5 X
K04H09L	15.7	0.15	K107N	356.116	28.172	238.660	13.806	0.19062	3.15862	5 X
K04H54P	15.3	0.15	K107N	353.364	195.688	67.564	15.531	0.17739	3.20699	2 X
K04J39A	15.1	0.15	K107N	199.714	348.006	84.913	20.456	0.16669	3.08033	4 X
K04R10D	17.7	0.15	K107N	359.286	52.645	213.149	1.758	0.24216	2.16389	5 X
K04R76D	17.3	0.15	K107N	303.736	183.123	145.982	7.094	0.22073	2.20476	2 X
K04RV6O	17.0	0.15	K107N	332.985	37.362	267.921	6.663	0.21984	2.16471	5 X
K04T09Z	17.3	0.15	K107N	332.022	254.396	51.257	6.458	0.25546	2.18555	4 X
K04T31G	16.4	0.15	K107N	353.462	47.225	221.192	7.260	0.12839	2.25759	7 X
K04TA2J	17.2	0.15	K107N	329.172	264.705	42.902	5.200	0.19036	2.22515	5 X
K04TF7K	16.8	0.15	K107N	329.118	60.529	236.698	6.728	0.12502	2.27331	3 X
K04TO4Z	16.5	0.15	K107N	104.314	284.823	213.699	5.724	0.06420	2.34727	6 X
K04TR8J	16.6	0.15	K107N	347.812	209.953	57.635	7.104	0.09165	2.33103	6 X
K04Ta0T	18.2	0.15	K107N	328.623	94.431	209.825	3.680	0.15279	2.20021	5 X
K04V03Z	17.1	0.15	K107N	323.385	252.326	56.222	8.245	0.15851	2.25641	4 X
K04V14N	16.2	0.15	K107N	309.427	278.468	53.803	7.977	0.23247	2.25090	4 X
K04X70R	16.4	0.15	K107N	86.300	27.328	113.761	8.476	0.07810	2.58626	5 X
K04X90Q	16.6	0.15	K107N	336.754	224.677	70.477	7.282	0.12644	2.36613	3 X
K05A18N	16.6	0.15	K107N	129.220	344.191	118.516	6.904	0.24771	2.59321	4 X

K05A27U	16.1	0.15	K107N	351.479	120.633	114.971	13.964	0.13402	2.63986	3 X
K05A56R	16.2	0.15	K107N	51.906	284.662	264.356	3.330	0.15300	2.61872	7 X
K05C37M	16.3	0.15	K107N	51.637	40.123	132.861	15.021	0.12799	2.71201	2 X
K05C63L	16.6	0.15	K107N	67.369	20.297	160.680	15.402	0.09091	2.64236	4 X
K05E12X	16.5	0.15	K107N	30.244	129.190	88.357	3.791	0.12043	2.70927	6 X
K05E51H	15.2	0.15	K107N	62.544	39.696	142.861	10.336	0.16862	2.73035	6 X
K05EA7G	16.1	0.15	K107N	15.548	36.963	195.920	11.904	0.27655	2.76314	3 X
K05G61H	16.4	0.15	K107N	67.843	349.188	191.577	3.956	0.04084	2.77537	7 X
K05G76Y	15.5	0.15	K107N	315.442	135.854	118.449	28.170	0.19122	3.16401	2 S
K05GF3A	15.1	0.15	K107N	13.504	331.445	196.353	16.145	0.15493	3.15300	5 X
K05GIOX	16.2	0.15	K107N	19.466	194.283	38.967	9.236	0.08966	2.79363	5 X
K05J22L	15.9	0.15	K107N	334.995	115.499	132.889	25.086	0.33615	3.10502	2 S
K05J75H	15.4	0.15	K107N	26.086	308.594	249.073	7.840	0.15619	2.99637	2 X
K05J89Y	15.6	0.15	K107N	346.851	119.144	96.416	27.885	0.20147	3.12099	2 S
K05JD1R	15.9	0.15	K107N	189.759	230.691	177.547	10.427	0.03719	3.01127	6 X
K05JE7N	15.2	0.15	K107N	344.467	172.168	112.350	18.978	0.24027	2.94624	5 X
K05JI2L	17.7	0.15	K107N	234.598	278.133	229.652	0.524	0.15310	2.31239	4 X
K05L12J	15.2	0.15	K107N	311.135	220.622	107.525	25.200	0.22736	3.09087	5 X
K05L18S	16.7	0.15	K107N	115.659	115.954	71.251	12.852	0.04771	2.66689	3 X
K05M44G	15.9	0.15	K107N	324.704	2.416	245.079	28.802	0.27231	3.15744	2 S
K05N60J	15.9	0.15	K107N	104.053	235.047	315.979	5.035	0.06712	2.93882	5 X
K05NC2Z	15.9	0.15	K107N	322.809	239.995	67.714	19.972	0.32502	3.15880	2 X
K05O01J	14.9	0.15	K107N	316.034	276.079	47.114	13.771	0.29135	3.17744	6 X
K05O31G	15.4	0.15	K107N	328.507	130.902	170.105	17.511	0.15128	3.24438	3 X
K05QG9J	15.1	0.15	K107N	332.457	214.837	109.776	10.119	0.07382	3.17794	4 X
K05Uh9W	15.9	0.15	K107N	103.280	321.491	308.095	12.482	0.17704	2.79670	5 X
K05VC4Z	17.6	0.15	K107N	28.194	355.521	226.256	1.943	0.11909	2.33681	3 X
K05W00E	19.7	0.15	K107N	356.442	22.611	289.988	12.364	0.25158	1.15155	2 S
K05W87O	17.1	0.15	K107N	44.202	271.992	272.562	5.753	0.12211	2.28637	4 X
K05WK4E	17.3	0.15	K107N	84.925	37.734	106.325	7.730	0.13409	2.32347	2 X
K05Y70T	16.8	0.15	K107N	103.247	125.751	28.548	1.906	0.01978	2.12520	6 X
K05YD2B	17.6	0.15	K107N	9.939	316.734	294.808	4.639	0.11696	2.23008	3 X
K05YE3L	17.0	0.15	K107N	351.544	171.141	110.675	7.844	0.16799	2.19873	6 X
K06A47Y	17.6	0.15	K107N	15.574	288.439	314.824	2.913	0.10798	2.22061	6 X
K06A57X	17.3	0.15	K107N	22.523	349.693	241.129	2.116	0.21518	2.31734	4 X
K06A78J	16.5	0.15	K107N	47.798	32.474	162.627	12.616	0.12249	2.40470	4 X
K06B06X	17.1	0.15	K107N	37.613	76.041	128.604	3.259	0.16879	2.33113	5 X
K06B55Y	16.7	0.15	K107N	14.139	22.912	215.671	5.259	0.20382	2.34777	5 X
K06B79F	16.7	0.15	K107N	4.993	184.980	77.110	3.868	0.18429	2.32687	5 X
K06B80U	16.9	0.15	K107N	353.052	241.412	27.124	4.973	0.17844	2.35142	4 X
K06B95P	17.5	0.15	K107N	10.816	37.205	202.342	0.935	0.14568	2.36920	4 X
K06BD2Z	17.4	0.15	K107N	26.274	21.933	208.329	1.711	0.17047	2.35539	6 X
K06BE5F	17.6	0.15	K107N	89.482	305.651	197.601	4.196	0.17216	2.32501	5 X
K06BG5V	17.2	0.15	K107N	26.126	234.891	345.608	1.649	0.15680	2.36053	8 X
K06BG9B	17.0	0.15	K107N	317.080	167.578	150.658	7.169	0.17682	2.25380	5 X
K06BI9A	17.0	0.15	K107N	1.772	187.059	70.817	4.939	0.08145	2.31869	6 X
K06BM7N	17.2	0.15	K107N	33.721	65.493	149.505	1.842	0.13069	2.36668	6 X
K06BR6P	17.4	0.15	K107N	6.329	295.378	316.095	0.991	0.15201	2.35463	4 X
K06C57N	17.7	0.15	K107N	0.983	127.675	130.509	1.436	0.17022	2.34475	5 X
K06D07G	17.0	0.15	K107N	359.917	89.248	169.010	2.529	0.12804	2.35944	6 X
K06D07S	17.5	0.15	K107N	37.852	45.530	158.603	1.968	0.15659	2.41690	5 X
K06D11B	16.3	0.15	K107N	33.163	131.348	86.566	6.884	0.05361	2.33678	4 X
K06D49K	17.1	0.15	K107N	51.128	101.271	88.160	2.317	0.12329	2.38531	4 X
K06D69E	16.8	0.15	K107N	12.266	177.485	54.291	8.601	0.06243	2.32975	5 X
K06D74E	16.3	0.15	K107N	17.322	155.814	80.956	7.149	0.07066	2.34610	6 X
K06DB3D	17.6	0.15	K107N	341.576	220.067	69.775	2.445	0.18031	2.35099	3 X
K06DC0M	16.6	0.15	K107N	19.233	154.944	77.785	3.378	0.14214	2.37040	7 X
K06DE7Q	17.3	0.15	K107N	17.343	12.665	221.422	1.085	0.15653	2.40228	7 X
K06DJ2C	16.5	0.15	K107N	13.641	209.795	33.726	5.660	0.18945	2.42383	4 X
K06E63J	17.0	0.15	K107N	42.994	356.288	208.896	5.610	0.08850	2.40277	6 X
K06E63O	17.6	0.15	K107N	347.556	53.098	219.861	5.800	0.09776	2.38493	6 X
K06F29Y	16.4	0.15	K107N	229.207	137.701	149.183	1.783	0.18315	3.09065	3 W
K06F53S	17.2	0.15	K107N	328.185	270.092	34.981	2.879	0.19113	2.45258	4 X
K06G07V	16.9	0.15	K107N	334.324	223.201	58.984	7.390	0.09210	2.42090	4 X
K06G08F	17.8	0.15	K107N	40.399	85.313	170.021	8.986	0.07028	2.26437	6 S
K06G13Q	16.8	0.15	K107N	17.669	180.974	49.585	7.369	0.11296	2.45883	6 X
K06H13M	16.7	0.15	K107N	10.993	16.526	226.609	5.592	0.15726	2.42306	6 X
K06H42H	15.9	0.15	K107N	34.216	253.137	289.738	7.141	0.27656	2.58438	3 X
K06H49X	17.7	0.15	K107N	21.101	172.020	56.311	2.353	0.14570	2.44429	4 X
K06H72P	17.1	0.15	K107N	35.024	70.432	129.908	5.323	0.04924	2.57115	5 X
K06H85C	16.1	0.15	K107N	324.396	282.930	1.437	7.006	0.17855	2.58799	4 X
K06H89N	16.0	0.15	K107N	22.944	162.716	60.193	13.386	0.20955	2.54550	3 X
K06J55F	16.7	0.15	K107N	31.308	357.467	216.238	1.719	0.13386	2.53139	8 X
K06K47A	17.3	0.15	K107N	352.729	53.168	217.798	3.935	0.23071	2.53634	4 X
K06K51C	16.1	0.15	K107N	316.024	233.209	89.665	5.785	0.25758	2.55270	4 X
K06K76E	16.7	0.15	K107N	333.464	79.758	218.102	3.383	0.25747	2.55112	5 X
K06K95P	17.4	0.15	K107N	81.338	343.064	170.053	6.549	0.15682	2.54565	3 X

K06K99T	16.6	0.15	K107N	335.836	55.055	233.607	14.425	0.11597	2.52207	5 X
K06L00U	15.8	0.15	K107N	327.251	74.201	239.768	10.706	0.26858	2.67121	3 X
K06L04F	16.1	0.15	K107N	327.013	191.392	121.677	7.957	0.27230	2.56389	4 X
K06L07V	15.1	0.15	K107N	313.237	262.543	67.934	12.260	0.29284	2.57818	4 X
K06M12K	16.0	0.15	K107N	4.838	88.089	159.561	9.825	0.15905	2.57917	6 X
K06M13A	15.4	0.15	K107N	305.479	232.407	93.454	15.910	0.11419	2.63434	5 X
K06O17W	16.4	0.15	K107N	329.164	242.786	64.600	13.723	0.26414	2.69305	2 X
K06P08J	16.1	0.15	K107N	320.990	236.274	69.085	5.228	0.19023	2.71773	6 X
K06P22D	15.4	0.15	K107N	264.623	227.831	97.358	3.479	0.06731	3.07366	8 X
K06Q13J	15.4	0.15	K107N	326.290	228.962	70.513	5.126	0.07987	2.79864	7 X
K06Q66K	16.1	0.15	K107N	309.943	348.563	333.484	2.745	0.18068	2.76462	7 X
K06QB5C	16.4	0.15	K107N	324.604	86.755	224.844	9.521	0.25616	2.74252	2 X
K06QC8V	15.2	0.15	K107N	289.895	305.977	20.139	5.538	0.04216	2.92058	5 X
K06QD6J	15.7	0.15	K107N	328.395	51.340	253.334	6.936	0.22218	2.80516	5 X
K06R90W	15.5	0.15	K107N	339.403	260.939	16.172	4.462	0.15457	3.04803	6 X
K06S41N	15.4	0.15	K107N	4.676	223.551	24.120	8.051	0.13024	3.05179	4 X
K06S42R	15.3	0.15	K107N	282.964	204.312	129.761	10.188	0.13913	3.17121	7 X
K06S43B	17.1	0.15	K107N	185.027	314.181	250.274	4.136	0.17188	2.36849	4 X
K06SG5M	16.1	0.15	K107N	19.882	14.056	211.063	9.066	0.13013	3.09405	2 X
K06SL4E	17.3	0.15	K107N	222.330	157.983	316.136	2.073	0.08854	2.62465	3 X
K06SL7L	15.2	0.15	K107N	270.398	167.198	172.691	11.478	0.07023	3.18597	10 X
K06T00B	20.0	0.15	K107N	348.054	180.881	169.360	27.568	0.32472	1.56201	3 X
K06T12G	15.8	0.15	K107N	275.974	118.148	221.925	10.735	0.07358	3.11833	2 X
K06U40C	16.5	0.15	K107N	327.190	75.287	232.226	2.176	0.22156	2.98711	4 X
K06U49D	16.8	0.15	K107N	316.791	56.492	300.230	5.340	0.02331	2.68684	3 X
K06U52P	16.0	0.15	K107N	323.871	72.628	220.411	6.221	0.14383	3.04321	3 X
K06UI3F	15.6	0.15	K107N	294.324	71.762	256.120	12.603	0.11354	2.96453	4 X
K06UM2M	15.6	0.15	K107N	320.764	51.288	244.424	4.202	0.12330	3.09328	4 X
K06V95T	15.0	0.15	K107N	334.355	225.087	64.227	17.639	0.17784	3.16257	6 X
K06VA6W	15.5	0.15	K107N	354.540	222.203	99.162	10.635	0.03840	2.90768	4 X
K06VF0Z	15.3	0.15	K107N	252.224	32.541	7.437	9.368	0.06813	3.09574	5 X
K07C53D	17.3	0.15	K107N	65.665	43.619	157.655	23.935	0.05220	1.90989	5 X
K07G29L	16.8	0.15	K107N	247.776	184.557	201.948	20.821	0.09744	1.93799	4 X
K07G30Z	13.6	0.15	K107N	354.662	111.849	210.023	16.549	0.04390	5.20859	3 S
K07M01Y	17.3	0.15	K107N	329.423	131.499	183.711	6.996	0.18779	2.22696	3 X
K07P07S	16.0	0.15	K107N	199.797	188.842	157.820	31.114	0.21965	2.63963	2 S
K07P14L	17.0	0.15	K107N	274.890	251.394	103.916	7.672	0.13794	2.30872	6 X
K07P19A	16.9	0.15	K107N	311.056	318.125	315.994	4.070	0.23817	2.39595	7 X
K07P22U	16.0	0.15	K107N	298.119	213.105	126.639	7.881	0.23084	2.37793	6 X
K07P31G	16.9	0.15	K107N	289.489	148.018	193.524	3.479	0.14867	2.28317	7 X
K07P35K	16.4	0.15	K107N	295.830	134.351	209.385	1.577	0.25423	2.36608	7 X
K07P37K	17.0	0.15	K107N	347.536	114.937	162.055	8.393	0.17659	2.25969	4 X
K07P42S	17.7	0.15	K107N	322.869	179.480	147.538	6.580	0.27778	2.22413	2 S
K07P43N	16.4	0.15	K107N	303.497	197.416	127.648	6.522	0.12865	2.36116	6 X
K07P49F	15.5	0.15	K107N	159.038	219.989	156.275	16.627	0.05807	3.09285	4 X
K07R06A	17.2	0.15	K107N	355.094	72.077	202.010	6.518	0.18755	2.27842	3 X
K07R08U	17.6	0.15	K107N	351.568	352.569	284.944	1.741	0.18769	2.33165	4 X
K07R14L	16.7	0.15	K107N	224.012	209.572	170.833	11.527	0.16081	2.63882	2 X
K07R23J	16.8	0.15	K107N	322.534	2.528	294.372	4.945	0.20466	2.34260	5 X
K07R71U	17.7	0.15	K107N	16.073	183.716	49.762	3.422	0.17889	2.39768	5 X
K07R95A	17.0	0.15	K107N	299.700	298.102	40.247	3.561	0.19204	2.37493	4 X
K07RA3E	16.9	0.15	K107N	305.520	62.436	270.061	1.461	0.24354	2.33281	6 X
K07RA9V	17.5	0.15	K107N	328.686	112.928	194.997	2.518	0.19869	2.31299	6 X
K07RD5L	16.9	0.15	K107N	274.287	168.732	192.427	4.039	0.16110	2.39105	5 X
K07RE9W	15.2	0.15	K107N	178.628	320.670	33.047	28.506	0.18027	3.21290	2 S
K07RF7R	16.3	0.15	K107N	325.804	249.191	45.988	6.732	0.12143	2.39025	6 X
K07RG1S	17.6	0.15	K107N	336.531	242.502	55.823	2.388	0.21768	2.31428	4 X
K07RH6L	17.4	0.15	K107N	349.743	12.290	257.855	0.496	0.16082	2.42852	7 X
K07RM7B	17.3	0.15	K107N	343.592	125.709	152.618	4.879	0.19416	2.36081	4 X
K07RN6M	17.8	0.15	K107N	319.434	197.550	123.142	1.401	0.23963	2.28750	4 X
K07RP8Z	15.9	0.15	K107N	292.291	255.432	81.547	7.737	0.14614	2.37650	7 X
K07RW6A	16.3	0.15	K107N	164.422	23.770	44.271	11.714	0.10949	3.19326	4 X
K07S05X	17.0	0.15	K107N	313.719	81.193	242.905	1.633	0.21323	2.33892	5 X
K07T04U	17.6	0.15	K107N	331.263	172.681	127.227	2.821	0.19108	2.40838	4 X
K07T05R	17.6	0.15	K107N	287.494	121.735	224.795	1.486	0.22702	2.39553	3 X
K07T13L	15.3	0.15	K107N	309.174	99.047	210.973	14.152	0.10860	2.61564	6 X
K07T20M	15.5	0.15	K107N	14.132	191.337	40.156	9.305	0.03624	2.72127	6 X
K07T28V	16.5	0.15	K107N	290.112	113.644	211.958	6.369	0.03852	2.68531	5 X
K07T83B	16.6	0.15	K107N	22.574	35.379	188.163	3.735	0.14644	2.58111	2 X
K07T91J	17.2	0.15	K107N	316.739	89.246	234.936	8.425	0.23789	2.35346	3 X
K07T93L	15.8	0.15	K107N	357.097	201.728	57.840	6.839	0.16298	2.63254	6 X
K07T98L	16.4	0.15	K107N	24.352	182.442	45.471	3.290	0.07525	2.63599	6 X
K07TC7T	16.1	0.15	K107N	351.307	194.621	63.189	4.777	0.04892	2.76538	2 X
K07TF4T	16.1	0.15	K107N	212.868	192.427	212.453	14.247	0.10983	2.65319	3 X
K07TG9L	16.3	0.15	K107N	340.243	259.397	16.607	1.206	0.11691	2.59900	7 X
K07TL7A	14.8	0.15	K107N	65.671	299.020	232.672	15.371	0.06711	3.05532	6 X
K07TM8M	16.0	0.15	K107N	57.363	321.338	216.721	11.592	0.13704	3.03167	3 X

K07TM8U	16.0	0.15	K107N	3.734	25.565	218.171	4.321	0.09530	2.77170	5 X
K07TN0N	16.7	0.15	K107N	351.824	185.986	82.140	4.599	0.16142	2.61662	6 X
K07TN3T	15.9	0.15	K107N	342.501	65.068	218.333	14.779	0.19293	2.58642	4 X
K07TTO8R	15.8	0.15	K107N	248.817	282.368	84.037	6.775	0.06535	2.72332	2 X
K07TV8R	15.2	0.15	K107N	23.567	353.477	225.179	13.945	0.10041	3.02094	4 X
K07Ta2C	15.0	0.15	K107N	23.458	353.739	229.920	12.607	0.14573	3.04184	2 X
K07Td3M	16.0	0.15	K107N	176.349	5.397	63.239	6.281	0.02475	2.72021	6 X
K07Ti9J	16.3	0.15	K107N	330.657	245.549	32.790	5.365	0.12499	2.80047	7 X
K07Tj2L	16.8	0.15	K107N	244.795	325.769	23.348	5.599	0.12981	2.90775	4 X
K07Tj2N	15.7	0.15	K107N	160.324	59.879	33.331	15.944	0.20729	3.07428	4 X
K07Tj2Y	17.1	0.15	K107N	12.977	152.715	144.776	5.845	0.13451	2.33808	4 X
K07Tj3B	17.1	0.15	K107N	284.893	282.568	54.605	15.655	0.14879	2.56786	4 X
K07U14L	16.1	0.15	K107N	226.502	308.027	88.232	7.576	0.12996	2.64516	6 X
K07U64O	17.2	0.15	K107N	338.076	71.427	209.327	8.007	0.14633	2.56708	2 X
K07U81H	17.3	0.15	K107N	356.003	184.316	82.041	3.187	0.19721	2.44096	6 X
K07UE1P	15.3	0.15	K107N	98.661	59.237	98.687	10.222	0.06991	2.96854	2 W
K07UE2C	16.3	0.15	K107N	247.534	359.187	77.723	15.548	0.22999	2.58445	3 X
K07UE2F	17.3	0.15	K107N	201.184	45.181	86.505	7.057	0.07265	2.38969	5 X
K07V33G	16.1	0.15	K107N	323.272	23.463	259.309	5.383	0.19950	2.68082	5 X
K07V34N	16.4	0.15	K107N	341.670	224.406	68.628	8.850	0.19258	2.54852	3 X
K07V67K	17.6	0.15	K107N	332.931	262.637	42.684	2.724	0.23109	2.33435	3 X
K07VB7R	15.2	0.15	K107N	48.778	311.508	240.845	11.346	0.08068	2.96777	6 X
K07VC5F	15.9	0.15	K107N	250.974	294.956	84.432	12.853	0.20227	2.61823	2 W
K07VF5B	16.7	0.15	K107N	339.943	318.106	330.972	3.849	0.17316	2.58887	5 X
K07VG6H	15.3	0.15	K107N	316.270	244.976	68.042	14.209	0.22081	2.60609	5 X
K07VG8P	15.6	0.15	K107N	310.666	253.706	68.281	13.950	0.19055	2.66010	6 X
K07VI5K	15.6	0.15	K107N	172.992	255.315	160.259	9.493	0.22434	3.15159	6 X
K07VJ3J	16.7	0.15	K107N	266.086	177.205	267.601	5.850	0.07367	2.42627	2 W
K07VM6Z	15.8	0.15	K107N	311.987	83.405	308.957	12.075	0.11451	2.65907	4 X
K07VQ9J	17.0	0.15	K107N	102.848	148.272	62.234	6.929	0.03711	2.39597	2 W
K07VW9Y	15.8	0.15	K107N	197.113	121.946	289.746	13.200	0.28678	3.05126	3 X
K07VX0C	16.8	0.15	K107N	178.646	237.301	182.018	1.990	0.17763	3.15011	3 X
K07VX0G	16.7	0.15	K107N	153.658	323.822	181.907	2.046	0.07770	2.63390	7 X
K07VX0J	17.7	0.15	K107N	329.926	353.664	16.400	2.777	0.23027	2.30251	3 X
K07VX1C	16.6	0.15	K107N	244.155	280.393	107.707	3.145	0.13785	2.93850	4 X
K07VX1F	16.7	0.15	K107N	223.038	180.986	260.752	3.853	0.02632	2.78002	4 X
K07VX1G	16.8	0.15	K107N	219.576	350.062	99.503	3.026	0.14869	2.57469	4 X
K07VX1R	17.1	0.15	K107N	220.557	304.206	106.725	4.959	0.09570	2.76840	3 X
K07VX1V	16.1	0.15	K107N	99.336	231.974	315.725	2.117	0.11238	3.13678	5 X
K07VX1Z	15.1	0.15	K107N	94.839	93.253	93.329	17.427	0.01112	3.12887	2 W
K07VX2B	16.6	0.15	K107N	265.432	36.071	333.545	4.164	0.30516	2.58333	3 X
K07VX2C	17.1	0.15	K107N	202.785	67.756	24.148	8.005	0.22355	2.68558	4 X
K07VX2K	15.4	0.15	K107N	109.060	234.210	267.107	14.961	0.01272	3.12346	5 X
K07VX2O	16.6	0.15	K107N	189.410	145.120	15.705	8.450	0.10716	2.29998	3 X
K07VX2Q	16.3	0.15	K107N	296.384	88.121	293.611	11.486	0.20515	2.33060	3 X
K07VX2S	17.7	0.15	K107N	341.954	238.722	121.914	5.312	0.19170	2.21368	4 X
K07VX2Y	16.6	0.15	K107N	235.560	66.438	323.578	5.609	0.07141	2.71962	4 X
K07VX3A	18.0	0.15	K107N	206.847	70.943	68.653	7.787	0.04356	2.30572	2 X
K07VX3K	17.6	0.15	K107N	253.147	313.419	126.689	5.436	0.16754	2.36758	3 X
K07VX3M	17.2	0.15	K107N	262.327	296.828	151.736	5.499	0.10565	2.28643	3 X
K07VX3Q	17.4	0.15	K107N	178.523	80.411	107.984	2.621	0.12682	2.42022	4 X
K07VX3R	17.5	0.15	K107N	195.809	103.385	82.205	3.090	0.15167	2.37386	3 X
K07VX3S	16.5	0.15	K107N	237.088	12.509	69.634	2.885	0.03476	2.72667	4 X
K07VX4C	16.3	0.15	K107N	261.624	112.957	289.577	12.730	0.08657	2.68346	2 W
K07VX4D	17.0	0.15	K107N	230.298	134.310	284.853	13.874	0.33195	2.74908	2 W
K07VX4K	15.9	0.15	K107N	176.577	227.504	254.831	8.018	0.05906	2.64885	3 X
K07VX4N	15.8	0.15	K107N	189.760	225.235	203.959	2.947	0.22451	2.96466	4 X
K07VX4U	18.0	0.15	K107N	36.413	246.506	64.156	2.471	0.15698	2.19984	4 X
K07VX4Y	16.4	0.15	K107N	298.998	2.274	3.839	5.843	0.07138	2.66697	3 X
K07W11N	15.8	0.15	K107N	304.896	239.244	81.937	18.466	0.16639	2.65273	3 X
K07W21E	17.2	0.15	K107N	257.248	185.881	287.081	5.721	0.06929	2.46268	4 X
K07W23P	16.3	0.15	K107N	350.745	206.813	68.680	8.941	0.20909	2.57638	4 X
K07W24A	16.0	0.15	K107N	315.842	233.515	67.550	11.771	0.08441	2.72606	3 X
K07W28L	15.0	0.15	K107N	33.745	338.678	223.044	11.610	0.06980	3.15062	6 X
K07W56C	15.1	0.15	K107N	204.527	324.588	80.077	9.793	0.08456	2.98601	4 X
K07W62S	16.0	0.15	K107N	214.847	348.904	74.788	10.118	0.12374	3.03635	3 X
K07W63H	16.2	0.15	K107N	206.877	122.633	275.566	10.347	0.09506	3.03286	3 X
K07W63N	15.5	0.15	K107N	164.679	158.526	270.913	20.068	0.30215	3.15305	2 W
K07W63Q	15.9	0.15	K107N	215.172	304.285	92.160	10.464	0.04710	3.00905	3 X
K07X56N	14.7	0.15	K107N	96.723	248.159	301.083	24.827	0.23066	3.19019	4 X
K07X56U	17.3	0.15	K107N	287.361	116.075	281.335	0.886	0.08842	2.54991	7 X
K07X57L	17.4	0.15	K107N	247.314	8.003	104.427	4.487	0.14947	2.30704	3 X
K07X57M	17.1	0.15	K107N	280.799	273.603	149.935	3.000	0.14532	2.31265	4 X
K07X57S	15.3	0.15	K107N	212.280	205.718	257.539	10.829	0.14012	2.67958	2 W
K07X57T	16.6	0.15	K107N	52.385	137.523	95.656	12.577	0.06194	3.06315	2 W
K07X57W	17.0	0.15	K107N	300.770	349.670	65.018	5.631	0.12590	2.25319	3 X
K07X57Y	15.6	0.15	K107N	221.902	123.476	254.461	8.611	0.09741	3.13067	3 X

K07X57Z	16.7	0.15	K107N	217.927	49.136	59.969	5.396	0.11704	2.56240	3 X
K07X58A	17.0	0.15	K107N	23.699	213.016	50.685	6.670	0.02213	2.91794	4 X
K07X58L	15.7	0.15	K107N	26.760	289.443	324.969	8.450	0.04642	3.12289	5 X
K07X58N	17.6	0.15	K107N	257.378	28.916	38.991	4.992	0.15692	2.43968	4 X
K07X58X	17.5	0.15	K107N	348.652	248.121	108.660	7.643	0.12518	2.42732	4 X
K07X59B	16.7	0.15	K107N	254.337	135.282	296.621	5.381	0.04219	2.76975	5 X
K07Y70Y	16.3	0.15	K107N	264.354	70.329	7.007	6.379	0.07981	2.30878	2 X
K07Y70Z	16.6	0.15	K107N	244.125	348.198	122.115	25.881	0.27700	2.35592	2 W
K07Y71E	15.5	0.15	K107N	151.827	179.300	307.120	13.924	0.19611	3.11055	3 X
K07Y71N	17.0	0.15	K107N	84.122	231.402	351.874	3.226	0.03353	2.80688	4 X
K07Y71R	15.8	0.15	K107N	272.415	215.703	166.848	18.707	0.16510	3.12746	6 X
K07Y71S	17.0	0.15	K107N	245.556	76.839	353.888	7.227	0.16287	2.57326	4 X
K07Y71Z	16.6	0.15	K107N	154.003	83.675	112.967	15.760	0.05387	2.53537	3 X
K07Y72C	15.1	0.15	K107N	135.707	250.793	261.552	7.885	0.03650	3.16105	5 X
K07Y72D	15.9	0.15	K107N	354.181	327.990	321.401	15.526	0.06878	3.18712	3 X
K07Y72L	17.4	0.15	K107N	265.435	144.275	351.881	5.253	0.02455	2.23338	6 X
K07Y72M	15.4	0.15	K107N	136.531	262.557	259.559	8.134	0.17202	3.18067	4 X
K07Y73C	16.0	0.15	K107N	129.390	261.662	301.339	8.545	0.21884	2.98387	2 W
K07Y73N	17.4	0.15	K107N	108.854	270.492	327.837	4.448	0.11819	2.65024	4 X
K07Y74D	17.4	0.15	K107N	242.366	304.842	144.362	9.486	0.24318	2.53009	3 X
K07Y74H	16.9	0.15	K107N	294.839	267.645	159.067	7.099	0.10547	2.35989	5 X
K07Y74K	16.7	0.15	K107N	213.758	46.150	103.060	3.393	0.13540	2.61710	4 X
K08A76B	16.2	0.15	K107N	193.808	97.923	7.090	9.196	0.20482	2.97911	4 X
K08AD5A	16.2	0.15	K107N	93.050	172.115	97.265	3.208	0.17599	2.71542	4 X
K08AD5G	15.6	0.15	K107N	85.631	254.172	344.868	11.773	0.11450	2.79232	2 W
K08AD5O	16.3	0.15	K107N	172.468	95.321	83.191	8.990	0.07744	2.57954	3 W
K08AD5X	16.0	0.15	K107N	259.582	347.809	73.728	11.660	0.18014	2.72705	4 X
K08AD6E	16.2	0.15	K107N	241.501	226.198	196.581	8.741	0.13771	2.80549	5 X
K08AD6J	15.3	0.15	K107N	114.729	162.986	21.869	13.200	0.01469	3.13827	5 X
K08AD6K	15.3	0.15	K107N	358.146	274.131	22.436	10.535	0.08407	3.14336	6 X
K08AD6M	16.1	0.15	K107N	167.447	217.923	289.457	7.095	0.12727	3.06384	3 X
K08AD6T	16.2	0.15	K107N	167.394	313.916	160.984	7.672	0.14295	3.16771	3 X
K08AD7D	17.1	0.15	K107N	215.701	324.784	192.129	5.886	0.06777	2.36010	6 X
K08AD7E	16.3	0.15	K107N	248.916	161.531	258.693	6.940	0.17703	2.68140	4 X
K08B40B	17.1	0.15	K107N	193.048	156.293	42.578	7.792	0.02433	2.27349	3 X
K08B41P	16.7	0.15	K107N	194.215	143.536	42.594	3.279	0.12682	2.42743	3 X
K08B45C	16.1	0.15	K107N	154.348	64.358	80.538	10.299	0.16287	3.12442	3 X
K08B51M	17.5	0.15	K107N	326.645	7.048	46.730	5.465	0.21550	2.25218	2 W
K08B52B	17.6	0.15	K107N	230.737	278.248	195.703	3.606	0.18216	2.57641	6 X
K08B52N	17.3	0.15	K107N	182.065	99.979	100.307	6.148	0.12367	2.46704	4 X
K08B52O	16.8	0.15	K107N	305.229	57.985	358.046	13.092	0.12860	2.42479	2 W
K08C77X	15.8	0.15	K107N	181.600	307.993	156.511	17.112	0.26024	3.14602	4 X
K08CI8U	16.0	0.15	K107N	159.551	234.323	335.300	30.769	0.25681	2.64475	3 X
K08CK9C	15.1	0.15	K107N	171.104	227.662	274.456	8.678	0.03572	2.96250	2 W
K08CK9Q	15.0	0.15	K107N	57.927	135.825	97.393	13.616	0.01673	3.19657	2 W
K08CK9V	17.2	0.15	K107N	267.875	278.626	155.303	9.338	0.16347	2.57096	3 X
K08CK9Y	15.9	0.15	K107N	226.796	265.049	168.121	10.777	0.13424	3.03070	3 X
K08D49Q	16.5	0.15	K107N	145.931	100.521	112.260	15.698	0.06706	2.54554	2 W
K08L08W	17.3	0.15	K107N	331.102	118.498	223.212	17.262	0.39369	1.67525	5 X
K08SF5M	17.5	0.15	K107N	167.934	17.735	38.328	6.552	0.15233	2.19688	2 X
K08U04J	17.0	0.15	K107N	270.630	293.646	64.731	24.315	0.05757	1.94053	3 X
K08U75S	15.8	0.15	K107N	83.367	250.766	248.210	12.416	0.13140	2.58277	5 X
K08UT7R	15.7	0.15	K107N	103.628	18.138	40.686	27.959	0.15487	3.16004	2 S
K08UU2L	16.5	0.15	K107N	56.456	281.502	250.748	11.777	0.19866	2.58886	3 W
K08UY5E	16.8	0.15	K107N	62.480	287.376	236.529	4.440	0.21768	2.58154	2 X
K08V03L	15.1	0.15	K107N	86.106	194.392	239.271	27.372	0.17589	3.18888	3 S
K08V79M	16.2	0.15	K107N	60.321	74.708	100.608	4.997	0.17665	2.54939	3 X
K08W43O	15.0	0.15	K107N	89.787	197.678	248.641	25.901	0.03635	3.15035	2 S
K08WC1N	15.1	0.15	K107N	126.698	331.106	139.007	19.895	0.20978	3.12875	4 X
K08WD7M	15.0	0.15	K107N	80.044	165.757	281.104	15.578	0.07718	3.23841	7 X
K08X17Y	16.8	0.15	K107N	86.123	335.273	174.456	3.041	0.14552	2.55827	7 X
K08Y31Y	17.2	0.15	K107N	253.184	303.826	116.275	27.744	0.14651	1.90046	4 X
K08Y32J	16.9	0.15	K107N	7.294	147.042	93.392	3.740	0.12739	2.61115	3 X
K08Y75J	15.4	0.15	K107N	6.602	130.095	103.289	18.866	0.18596	3.06600	3 X
K08YD4D	17.0	0.15	K107N	34.311	311.509	261.341	9.456	0.17289	2.38973	3 X
K09A15Y	15.7	0.15	K107N	46.706	103.348	86.627	10.331	0.09664	2.76699	4 X
K09A30V	17.2	0.15	K107N	311.170	197.173	110.981	7.255	0.13715	2.29041	4 X
K09A35G	16.7	0.15	K107N	333.765	215.268	74.161	5.549	0.14020	2.30321	7 X
K09B17P	15.7	0.15	K107N	72.324	232.090	285.597	7.400	0.07869	3.08214	7 X
K09D06R	15.6	0.15	K107N	38.013	91.563	112.026	10.072	0.09449	3.08425	5 X
K09D26T	16.6	0.15	K107N	2.801	211.879	39.955	0.422	0.19661	3.04615	6 X
K09D40H	14.9	0.15	K107N	99.474	350.244	156.733	17.140	0.06105	3.08687	3 X
K09F25P	15.7	0.15	K107N	116.592	1.797	124.039	17.501	0.03033	3.12820	2 W
K09F27B	15.6	0.15	K107N	45.146	55.275	140.245	16.859	0.16151	3.18875	4 X
K09F47R	15.9	0.15	K107N	149.407	305.598	150.521	17.601	0.10616	3.17272	5 X
K09F61J	14.6	0.15	K107N	46.528	149.062	95.423	32.833	0.28829	3.14844	4 S
K09F73O	16.9	0.15	K107N	165.734	47.047	97.728	4.498	0.12502	2.62819	3 X

K09J02O	19.3	0.15	K107N	215.767	239.671	203.498	19.634	0.47816	0.88845	2 X
K10C09Y	16.3	0.15	K107N	358.121	174.509	80.751	10.010	0.12681	2.57213	5 X
K10C09Z	16.3	0.15	K107N	32.841	160.259	51.079	8.430	0.10723	2.58265	3 X
K10C11B	16.6	0.15	K107N	354.449	204.835	56.853	8.823	0.17933	2.78889	5 X
K10C18Y	16.1	0.15	K107N	50.918	167.646	330.484	5.261	0.05025	2.61220	5 X
K10C52N	16.6	0.15	K107N	5.021	158.759	98.346	10.618	0.22599	2.60054	3 X
K10C60O	16.3	0.15	K107N	9.325	19.301	154.271	12.623	0.12221	3.07699	5 X
K10C98M	16.8	0.15	K107N	88.378	126.154	321.493	5.683	0.02020	2.78539	4 X
K10CC9J	15.8	0.15	K107N	19.809	123.061	34.228	15.597	0.18463	3.19170	5 X
K10CD0A	16.2	0.15	K107N	10.524	357.432	241.584	7.224	0.08825	2.67995	5 X
K10CD7Z	16.2	0.15	K107N	125.458	70.242	347.656	12.532	0.08289	2.71437	7 X
K10D12C	15.9	0.15	K107N	2.426	79.924	180.215	14.677	0.16904	2.56580	2 X
K10D16C	16.4	0.15	K107N	27.612	102.556	121.859	14.363	0.14086	2.54258	3 X
K10D19A	15.8	0.15	K107N	18.886	99.155	128.117	22.479	0.10728	3.05885	2 X
K10D21X	17.0	0.15	K107N	101.438	127.816	303.987	5.443	0.12697	2.23155	6 X
K10D28Y	15.3	0.15	K107N	67.594	286.559	235.532	14.938	0.18644	3.10984	5 X
K10D65P	15.9	0.15	K107N	88.469	268.974	245.772	25.233	0.13696	2.53820	3 X
K10E87T	15.4	0.15	K107N	44.601	162.652	26.266	14.527	0.10923	2.61975	4 X
K10F86A	15.9	0.15	K107N	160.817	34.707	12.085	18.281	0.08971	3.12115	3 X
K10G24Y	14.8	0.15	K107N	326.883	195.236	106.457	15.963	0.24991	2.65038	5 X
K10G26M	17.2	0.15	K107N	344.780	210.875	65.367	2.275	0.16807	2.44402	5 X
K10G27E	15.6	0.15	K107N	122.753	299.482	164.359	10.854	0.08345	2.99037	5 X
K10G28C	16.5	0.15	K107N	23.631	133.940	85.420	8.562	0.16490	2.61060	2 X
K10G31Y	17.5	0.15	K107N	343.131	175.236	105.049	4.292	0.19061	2.31991	5 X
K10G66N	16.0	0.15	K107N	52.868	139.847	39.719	13.631	0.11361	2.65149	4 X
K10G71Z	14.8	0.15	K107N	167.608	110.344	9.849	23.738	0.09056	3.18480	5 X
K10G75L	16.9	0.15	K107N	9.247	144.522	96.782	7.402	0.21305	2.33115	4 X
K10G75M	16.9	0.15	K107N	343.882	154.957	115.991	6.317	0.20271	2.40888	4 X
K10G97O	16.0	0.15	K107N	266.476	238.986	102.750	7.078	0.08439	2.79483	4 X
K10GF8X	16.9	0.15	K107N	344.603	206.878	64.190	6.291	0.09997	2.35581	5 X
K10GG1D	18.0	0.15	K107N	28.054	54.766	159.563	6.043	0.12972	2.31055	4 X
K10H14X	15.4	0.15	K107N	186.718	306.856	160.502	19.899	0.09098	3.04620	8 X
K10H67S	16.0	0.15	K107N	31.508	205.757	66.320	5.335	0.02550	2.76833	7 X
K10H70A	15.8	0.15	K107N	125.354	33.760	131.770	21.941	0.12730	3.15597	3 X
K10H83S	16.2	0.15	K107N	81.590	302.771	271.390	4.102	0.09214	2.64923	2 W
K10HA8Y	16.2	0.15	K107N	53.857	99.083	92.578	14.145	0.10425	2.56118	5 X
K10J00J	17.4	0.15	K107N	340.881	183.900	94.253	7.685	0.17849	2.33349	2 X
K10J28V	17.4	0.15	K107N	343.871	173.174	108.389	3.886	0.16743	2.47371	5 X
K10J30W	15.9	0.15	K107N	30.657	334.466	219.840	11.726	0.23353	2.76560	2 X
K10J71U	16.8	0.15	K107N	333.750	227.594	46.508	1.728	0.04461	2.62380	6 X
K10J79B	17.7	0.15	K107N	349.177	125.720	150.532	5.202	0.17713	2.44197	3 X
K10J79J	17.8	0.15	K107N	60.526	52.183	130.060	5.879	0.12496	2.45703	2 X
K10J82Y	17.9	0.15	K107N	18.284	55.177	181.976	4.874	0.20449	2.35555	3 X
K10J84J	18.4	0.15	K107N	346.312	126.155	163.122	4.763	0.20842	2.14460	3 X
T2S5002	15.1	0.15	K107N	317.625	104.466	215.441	16.702	0.24618	3.07973	5 X

New perturbed one-opposition orbits:

Object	H	G	Epoch	M	Peri.	Node	Incl.	e	a	Arc C
K10C18G	21.0	0.15	K107N	121.861	351.138	78.971	10.118	0.22230	1.42981	46 S
K10CD2C	16.1	0.15	K107N	13.690	155.366	79.576	30.631	0.43855	3.15741	92 X
K10CH1J	21.0	0.15	K107N	18.425	99.607	147.414	7.377	0.48934	1.99795	92 X
K10E45V	19.8	0.15	K107N	26.470	118.081	125.953	7.933	0.36995	1.85055	64 X
K10F81C	21.8	0.15	K107N	19.974	63.245	144.626	1.685	0.62834	2.66505	49 X
K10F81J	20.9	0.15	K107N	7.002	172.033	97.763	42.172	0.68831	3.56829	47 S
K10G07R	18.3	0.15	K107N	7.696	191.847	157.666	24.243	0.84635	1.83049	42 X
K10G33O	19.2	0.15	K107N	4.334	153.599	143.618	19.119	0.69911	2.40890	37 X
K10G62W	19.3	0.15	K107N	123.389	352.456	99.286	32.428	0.57551	1.27004	38 X
K10G62X	20.3	0.15	K107N	27.486	316.080	207.955	21.650	0.70438	2.95628	38 X
K10J33L	17.7	0.15	K107N	337.001	308.002	53.663	5.193	0.73173	2.60355	12 X
K10J34V	20.9	0.15	K107N	4.939	86.815	225.540	7.217	0.54433	1.72398	11 X
K10J41K	20.1	0.15	K107N	16.941	144.366	72.265	25.598	0.57607	2.78348	7 X
K10J71N	21.4	0.15	K107N	14.669	185.269	62.585	17.611	0.58112	2.38153	8 X
K10J87F	19.1	0.15	K107N	30.690	12.803	138.499	25.174	0.63577	2.54450	7 X
K10J87G	19.2	0.15	K107N	26.813	267.192	207.270	16.660	0.94141	2.61086	6 X
K10J88E	21.5	0.15	K107N	39.611	258.119	226.601	10.808	0.76463	2.11786	4 X
K10J88F	18.5	0.15	K107N	353.731	211.474	115.554	17.296	0.65095	2.19720	3 X
K10J88G	19.4	0.15	K107N	356.475	106.382	213.388	30.351	0.38178	1.36601	3 X
K10JB0H	26.3	0.15	K107N	18.111	165.542	71.928	0.765	0.56056	2.34380	2 X

New one-opposition orbits:

Object	H	G	Epoch	M	Peri.	Node	Incl.	e	a	Arc C
K07VH4N	17.4	0.15	K07BG	13.570	151.127	242.037	23.488	0.17278	2.34001	46DW
K08D59T	17.8	0.15	K0824	26.335	276.642	198.840	3.414	0.16898	2.20968	24 W
K10D31L	16.5	0.15	K103P	18.791	53.195	148.970	15.863	0.14742	3.01808	87 X
K10D50Z	17.0	0.15	K103P	326.710	131.652	147.048	15.730	0.21385	3.06867	86 S
K10F92W	16.4	0.15	K104E	344.206	155.200	65.681	18.951	0.22396	2.75834	63 S
K10G25L	15.5	0.15	K104E	326.972	167.803	90.622	11.859	0.19529	3.15416	39 X

K10G28E	15.8	0.15	K104E	10.202	129.583	69.681	13.013	0.33145	3.05647	42 S
K10HA3T	15.9	0.15	K1054	284.785	266.992	55.812	15.831	0.16462	2.84528	23 S
K10HA4E	17.5	0.15	K1054	308.046	235.909	61.198	7.756	0.17962	2.20027	23 S
K10HA4R	16.8	0.15	K104E	5.097	144.190	69.165	4.654	0.19942	2.65433	40 S
K10HA7T	16.0	0.15	K1054	290.928	269.462	51.424	15.498	0.21312	2.66379	23 S
K10J01Q	18.5	0.15	K1054	323.570	269.107	31.086	28.216	0.40882	2.64672	8 H
K10J01Y	17.5	0.15	K1054	329.918	21.046	246.996	1.666	0.16990	2.35457	15 S
K10J31G	16.7	0.15	K1054	335.992	33.095	222.609	4.452	0.13850	2.61698	13 S
K10J34B	16.7	0.15	K1054	22.396	103.257	88.757	13.122	0.23008	2.58098	14 X
K10J40A	16.5	0.15	K1054	9.419	292.841	279.219	0.570	0.20328	3.02421	12 S
K10J40B	17.5	0.15	K1054	320.151	253.023	48.022	4.324	0.33884	2.49683	12ES
K10J43C	16.9	0.15	K1054	349.336	196.730	47.420	14.665	0.14962	2.56057	16 S
K10J44B	16.5	0.15	K1054	1.891	346.154	241.815	4.525	0.10479	2.56984	14 S
K10J72O	17.0	0.15	K104E	340.540	154.168	94.637	12.932	0.14410	2.69891	38 X
K10J73J	16.8	0.15	K1054	359.787	187.922	39.546	3.895	0.14829	2.70592	12 S
K10J73V	17.7	0.15	K1054	327.446	213.687	57.278	3.260	0.15318	2.39969	10 S
K10J74S	16.6	0.15	K1054	58.240	106.173	59.473	15.224	0.06869	2.67670	7 X
K10J80M	15.5	0.15	K1054	3.984	171.215	52.628	30.351	0.18036	3.07319	11 S
K10J80O	17.8	0.15	K1054	298.539	241.328	52.963	21.398	0.05456	1.87283	11 S
K10J81S	14.6	0.15	K1054	303.238	283.229	308.128	24.726	0.06564	3.26486	1 S
K10J81T	13.8	0.15	K1054	359.291	4.935	305.660	39.547	0.04568	5.16217	1ES
K10J81V	18.3	0.15	K1054	321.929	164.049	166.271	7.390	0.16635	1.86555	2ES
K10J81Y	16.7	0.15	K1054	53.864	73.053	129.412	30.114	0.37239	3.32046	1ES
K10J83M	17.1	0.15	K1054	342.788	11.974	240.463	3.001	0.21027	2.33329	12 S
K10J87A	17.1	0.15	K1054	331.838	186.574	88.646	7.762	0.21931	2.37957	10 X
K10J87J	17.1	0.15	K1054	307.925	239.338	61.420	6.594	0.15883	2.27356	11 S
K10JB2G	16.8	0.15	K1054	355.410	181.886	55.128	12.428	0.11212	2.46963	6 S
K10JB5A	16.8	0.15	K1054	292.499	253.643	63.526	6.598	0.14284	2.27943	11 S
K10JB5C	17.8	0.15	K1054	351.931	187.615	55.871	10.570	0.19482	2.28373	11 S
K10JB5Y	16.9	0.15	K1054	331.341	354.588	281.163	3.286	0.21130	2.37874	14 S
K10JB6W	17.2	0.15	K1054	340.709	185.211	76.845	5.289	0.21969	2.61447	11 X
K10JB7S	16.1	0.15	K1054	341.915	175.279	79.750	6.481	0.10105	3.16502	11 X
K10JB8A	18.7	0.15	K1054	325.634	232.400	53.146	3.072	0.28007	2.30394	10 S
K10JB9K	16.8	0.15	K1054	315.283	67.897	218.935	8.792	0.10328	2.81551	7 X
K10JC3E	14.4	0.15	K1054	231.092	73.108	228.344	16.933	0.10960	3.11386	1 S
K10JC3F	15.2	0.15	K1054	325.320	115.627	92.746	27.417	0.09649	3.82302	1 S
K10JC3J	15.9	0.15	K1054	144.253	111.462	29.060	28.119	0.23772	2.38988	2 S
K10JC3K	14.9	0.15	K1054	209.471	80.562	240.457	25.578	0.06691	2.79555	1 S
K10JC3M	13.4	0.15	K1054	113.198	289.554	246.133	18.205	0.20847	3.80324	1 S
K10JC3N	14.4	0.15	K1054	91.201	2.826	35.030	28.450	0.31782	3.00021	1 S
K10JC3O	14.9	0.15	K1054	341.545	93.677	98.855	28.558	0.05589	3.12249	1 S
K10JC3P	14.9	0.15	K1054	210.520	291.296	32.959	25.124	0.19825	2.52620	0 S
K10JC3S	15.2	0.15	K1054	304.767	27.121	0.600	26.478	0.28572	3.86607	1 S
K10JC3V	14.9	0.15	K1054	226.059	211.385	102.951	28.831	0.09420	2.77094	1 S
K10JC3X	15.8	0.15	K1054	196.539	205.501	137.274	28.083	0.06083	2.27637	1 S
K10JC4A	18.2	0.15	K1054	9.280	276.372	344.050	13.772	0.31599	2.36444	2 S
K10JC4C	15.9	0.15	K1054	141.177	119.057	22.516	28.678	0.28175	2.31657	1 S
K10JC4D	14.9	0.15	K1054	213.911	242.873	78.550	27.970	0.07581	2.78344	1 S
K10K00G	15.4	0.15	K1054	203.923	51.347	289.420	27.917	0.21190	2.16720	1 S
K10K00J	15.9	0.15	K1054	211.821	300.705	23.694	27.324	0.18943	2.54888	1 S
K10K00K	14.9	0.15	K1054	212.308	40.846	290.332	17.813	0.25425	2.42794	1 S
K10K00M	14.7	0.15	K1054	44.435	194.001	63.877	28.281	0.03132	3.14692	1 S
K10K00O	14.4	0.15	K1054	357.362	111.008	59.486	24.897	0.14547	3.91707	1 S

New observations:

K00EA4F	tC2010	05	15.34389	15	41	09.90	-13	45	57.0	19.6	V	EK014691
K00EA4F	tC2010	05	15.36157	15	41	06.96	-13	45	58.1	20.2	V	EK014691
K00EA4F	C2010	05	17.95022	15	34	03.18	-13	48	56.6	19.2	V	EK014J75
K00EA4F	C2010	05	17.96455	15	34	00.80	-13	48	57.9	19.1	V	EK014J75
K00EA4F	C2010	05	17.97888	15	33	58.38	-13	48	58.8	18.7	V	EK014J75
K00EA4F	C2010	05	18.24569	15	33	14.66	-13	49	15.9			EK014691
K00EA4F	C2010	05	18.26341	15	33	11.71	-13	49	17.1			EK014691
K00EA4F	C2010	05	18.28115	15	33	08.71	-13	49	18.6			EK014691
K03K18R	C2010	05	18.58434	15	11	51.03	-20	03	23.0	19.2	V	EK014E12
K03K18R	C2010	05	18.59571	15	11	49.99	-20	03	17.2	19.2	V	EK014E12
K03K18R	C2010	05	18.60712	15	11	49.16	-20	03	10.8	19.7	V	EK014E12
K03K18R	C2010	05	18.61854	15	11	48.15	-20	03	04.1	19.6	V	EK014E12
K05W00E	S2010	05	16.98645	08	46	16.16	-40	27	19.0	17	R	EK014C51
K05W00E	s2010	05	16.98645	1	-	4528.1106	+	2833.9505	-	4387.0664		EK014C51
K05W00E	S2010	05	16.98658	08	46	16.14	-40	27	19.6			EK014C51
K05W00E	s2010	05	16.98658	1	-	4564.4875	+	2873.4440	-	4323.1339		EK014C51
K05W00E	S2010	05	17.18497	08	46	02.18	-40	22	25.4			EK014C51
K05W00E	s2010	05	17.18497	1	-	4552.4932	+	2834.1767	-	4361.1898		EK014C51
K05W00E	S2010	05	17.25106	08	45	57.52	-40	20	47.2			EK014C51
K05W00E	s2010	05	17.25106	1	-	4536.4231	+	2808.3361	-	4394.5544		EK014C51
K05W00E	S2010	05	17.25119	08	45	57.50	-40	20	48.0			EK014C51
K05W00E	s2010	05	17.25119	1	-	4573.0585	+	2847.7174	-	4330.6968		EK014C51

K05W00E	S2010	05	17.31728	08	45	52.88	-40	19	09.2			EK014C51
K05W00E	s2010	05	17.31728	1	-	4557.2855	+	2822.1486	-	4364.0170		EK014C51
K05W00E	S2010	05	17.38336	08	45	48.27	-40	17	30.8			EK014C51
K05W00E	s2010	05	17.38336	1	-	4541.3774	+	2796.5688	-	4397.2281		EK014C51
K05W00E	S2010	05	17.38349	08	45	48.25	-40	17	31.5			EK014C51
K05W00E	s2010	05	17.38349	1	-	4578.1427	+	2835.8978	-	4333.3756		EK014C51
K06T00B	HC2010	05	18.42881	21	11	30.66	+27	45	32.3			EK014291
K06T00B	HC2010	05	18.43753	21	11	32.34	+27	45	41.1			EK014291
K08L08W	C2010	05	17.94425	15	42	40.88	-08	15	57.4		17.6 V	EK014J75
K08L08W	C2010	05	17.95825	15	42	39.61	-08	15	30.1		17.5 V	EK014J75
K08L08W	C2010	05	17.97227	15	42	38.32	-08	15	03.2		17.4 V	EK014J75
K09J02O	C2010	05	18.41863	18	10	21.28	+24	36	40.8		19.3 V	EK014G96
K09J02O	C2010	05	18.42398	18	10	20.13	+24	36	53.3		19.2 V	EK014G96
K09J02O	C2010	05	18.42935	18	10	19.09	+24	37	05.7		18.9 V	EK014G96
K10C18G	2C2010	03	24.34904206	19	54.964	+38		19	51.50		23.0 R	EK014568
K10C18G	2C2010	03	24.35146806	19	55.560	+38		19	50.97			EK014568
K10C18G	2C2010	03	24.35670306	19	56.854	+38		19	49.94			EK014568
K10C18G	2C2010	03	24.35931706	19	57.499	+38		19	49.39		23.1 R	EK014568
K10CH1J	S2010	05	16.47723	12	26	41.40	+58	03	51.4		21 R	EK014C51
K10CH1J	s2010	05	16.47723	1	-	1374.8206	+	2192.0733	+	6395.2490		EK014C51
K10CH1J	S2010	05	16.74184	12	28	07.07	+58	15	34.2		21 R	EK014C51
K10CH1J	s2010	05	16.74184	1	-	1392.2809	+	2191.6845	+	6391.4454		EK014C51
K10CH1J	S2010	05	16.80805	12	28	28.58	+58	18	29.6		21 R	EK014C51
K10CH1J	s2010	05	16.80805	1	-	1364.3628	+	2168.2132	+	6405.3873		EK014C51
K10CH1J	S2010	05	16.87414	12	28	50.38	+58	21	27.0			EK014C51
K10CH1J	s2010	05	16.87414	1	-	1400.2840	+	2190.4894	+	6390.1800		EK014C51
K10CH1J	S2010	05	16.94036	12	29	12.31	+58	24	21.2		21 R	EK014C51
K10CH1J	s2010	05	16.94036	1	-	1372.5041	+	2167.2941	+	6404.1513		EK014C51
K10CH1J	S2010	05	17.00645	12	29	34.34	+58	27	16.9			EK014C51
K10CH1J	s2010	05	17.00645	1	-	1408.8888	+	2189.5113	+	6388.6472		EK014C51
K10CH1J	S2010	05	17.07266	12	29	56.46	+58	30	12.2		21 R	EK014C51
K10CH1J	s2010	05	17.07266	1	-	1381.5249	+	2166.6655	+	6402.2720		EK014C51
K10CH1J	S2010	05	17.13875	12	30	18.79	+58	33	08.3			EK014C51
K10CH1J	s2010	05	17.13875	1	-	1417.7081	+	2189.1596	+	6386.6904		EK014C51
K10CH1J	S2010	05	17.20496	12	30	41.09	+58	36	04.3			EK014C51
K10CH1J	s2010	05	17.20496	1	-	1389.7848	+	2166.2537	+	6400.6451		EK014C51
K10CH1J	S2010	05	17.27118	12	31	03.48	+58	38	58.6			EK014C51
K10CH1J	s2010	05	17.27118	1	-	1361.7171	+	2143.3172	+	6414.4102		EK014C51
K10CH1J	S2010	05	17.33727	12	31	26.13	+58	41	53.9			EK014C51
K10CH1J	s2010	05	17.33727	1	-	1397.7080	+	2165.4013	+	6399.3008		EK014C51
K10CH1J	S2010	05	17.40348	12	31	48.70	+58	44	49.6			EK014C51
K10CH1J	s2010	05	17.40348	1	-	1369.9635	+	2142.3383	+	6413.1029		EK014C51
K10CH1J	S2010	05	17.46957	12	32	11.54	+58	47	45.3			EK014C51
K10CH1J	s2010	05	17.46957	1	-	1406.7070	+	2164.5906	+	6397.8297		EK014C51
K10E45V	JC2010	05	18.38310	19	11	02.11	+09	53	26.7		18.4 C	EK014695
K10E45V	JC2010	05	18.38821	19	11	02.91	+09	53	25.6		18.6 C	EK014695
K10E45V	JC2010	05	18.39266	19	11	03.65	+09	53	23.5		19.1 C	EK014695
K10E45V	JC2010	05	18.39821	19	11	04.53	+09	53	22.1		19.1 C	EK014695
K10F81C	KC2010	05	17.93910	13	36	46.38	+33	58	02.6			EK014J95
K10F81C	KC2010	05	17.94487	13	36	56.78	+33	56	57.9			EK014J95
K10F81C	KC2010	05	17.95062	13	37	07.13	+33	55	53.3		17.5 R	EK014J95
K10F81C	KC2010	05	18.96054	14	07	15.23	+30	34	02.1			EK014J95
K10F81C	KC2010	05	18.96557	14	07	23.60	+30	32	57.7			EK014J95
K10F81C	KC2010	05	18.97071	14	07	32.12	+30	31	52.0		17.4 R	EK014J95
K10F81C	C2010	05	19.16925	14	13	11.63	+29	49	52.3		16.7 R	EK014H26
K10F81C	C2010	05	19.16953	14	13	12.11	+29	49	48.9		17.3 R	EK014H26
K10F81C	C2010	05	19.16985	14	13	12.63	+29	49	44.9		17.1 R	EK014H26
K10F81C	C2010	05	19.17113	14	13	14.71	+29	49	28.6		16.7 R	EK014H26
K10F81C	C2010	05	19.17167	14	13	15.54	+29	49	21.4		16.5 R	EK014H26
K10F81J	S2010	05	13.38267	20	34	04.47	+31	02	09.3		21 R	EK014C51
K10F81J	s2010	05	13.38267	1	+	4748.1981	-	3636.1031	+	3453.5552		EK014C51
K10F81J	S2010	05	13.51497	20	34	32.14	+30	57	47.5			EK014C51
K10F81J	s2010	05	13.51497	1	+	4752.8648	-	3620.6432	+	3463.6054		EK014C51
K10F81J	S2010	05	13.77958	20	35	27.76	+30	49	01.8			EK014C51
K10F81J	s2010	05	13.77958	1	+	4766.4137	-	3594.7483	+	3471.3217		EK014C51
K10F81J	S2010	05	14.04419	20	36	23.61	+30	40	06.4			EK014C51
K10F81J	s2010	05	14.04419	1	+	4779.9359	-	3569.3077	+	3479.4991		EK014C51
K10F81J	S2010	05	14.17662	20	36	51.49	+30	35	36.4			EK014C51
K10F81J	s2010	05	14.17662	1	+	4812.1488	-	3591.0362	+	3412.4906		EK014C51
K10F81J	S2010	05	14.44122	20	37	47.64	+30	26	28.8		21 R	EK014C51
K10F81J	s2010	05	14.44122	1	+	4825.4529	-	3565.5343	+	3420.0410		EK014C51
K10F81J	S2010	05	14.57353	20	38	15.85	+30	21	52.6		21 R	EK014C51
K10F81J	s2010	05	14.57353	1	+	4831.7840	-	3552.2849	+	3425.0891		EK014C51
K10F81J	S2010	05	14.70583	20	38	44.03	+30	17	14.6			EK014C51
K10F81J	s2010	05	14.70583	1	+	4838.4369	-	3539.2392	+	3428.7924		EK014C51
K10F81J	S2010	05	14.90435	20	39	26.46	+30	10	12.1		21 R	EK014C51
K10F81J	s2010	05	14.90435	1	+	4861.3461	-	3537.4702	+	3398.1405		EK014C51

K10F81J	S2010	05	14.97044	20	39	40.58	+30	07	52.1		EK014C51
K10F81J	s2010	05	14.97044	1	+	4851.9139	-	3513.8779	+	3435.9839	EK014C51
K10F81J	S2010	05	14.97057	20	39	40.54	+30	07	51.4		EK014C51
K10F81J	s2010	05	14.97057	1	+	4877.5322	-	3548.0516	+	3364.1029	EK014C51
K10F81J	S2010	05	15.03666	20	39	54.77	+30	05	28.7		EK014C51
K10F81J	s2010	05	15.03666	1	+	4868.1362	-	3524.4378	+	3402.3390	EK014C51
K10F81J	S2010	05	15.10287	20	40	08.93	+30	03	07.0		EK014C51
K10F81J	s2010	05	15.10287	1	+	4884.1796	-	3534.7674	+	3368.7782	EK014C51
K10F81J	S2010	05	15.16896	20	40	23.12	+30	00	45.3		EK014C51
K10F81J	s2010	05	15.16896	1	+	4874.6718	-	3511.2089	+	3406.8272	EK014C51
K10F81J	S2010	05	15.30126	20	40	51.57	+29	55	57.0		EK014C51
K10F81J	s2010	05	15.30126	1	+	4881.2375	-	3498.3133	+	3410.5470	EK014C51
K10F81J	S2010	05	15.49978	20	41	34.35	+29	48	40.9		EK014C51
K10F81J	s2010	05	15.49978	1	+	4903.5011	-	3495.7742	+	3381.1073	EK014C51
K10F81J	S2010	05	15.56600	20	41	48.65	+29	46	14.5		EK014C51
K10F81J	s2010	05	15.56600	1	+	4919.2916	-	3505.7202	+	3347.8684	EK014C51
K10F81J	S2010	05	15.63209	20	42	02.94	+29	43	47.9		EK014C51
K10F81J	s2010	05	15.63209	1	+	4909.6646	-	3482.2485	+	3385.9720	EK014C51
K10F81J	S2010	05	15.69830	20	42	17.23	+29	41	21.1		EK014C51
K10F81J	s2010	05	15.69830	1	+	4925.8434	-	3492.5332	+	3351.6294	EK014C51
K10F81J	S2010	05	15.76439	20	42	31.53	+29	38	53.3		EK014C51
K10F81J	s2010	05	15.76439	1	+	4916.3739	-	3469.3045	+	3389.1002	EK014C51
K10F81J	S2010	05	15.76452	20	42	31.54	+29	38	52.7		EK014C51
K10F81J	s2010	05	15.76452	1	+	4941.9751	-	3502.7846	+	3316.9208	EK014C51
K10F81J	S2010	05	15.83061	20	42	45.88	+29	36	24.2		EK014C51
K10F81J	s2010	05	15.83061	1	+	4932.6010	-	3479.8651	+	3354.5191	EK014C51
K10F81J	S2010	05	15.89682	20	43	00.28	+29	33	56.0		EK014C51
K10F81J	s2010	05	15.89682	1	+	4948.5385	-	3490.0886	+	3320.6075	EK014C51
K10F81J	S2010	05	15.96291	20	43	14.63	+29	31	26.1		EK014C51
K10F81J	s2010	05	15.96291	1	+	4939.1455	-	3466.8973	+	3358.7778	EK014C51
K10F81J	S2010	05	16.02913	20	43	29.03	+29	28	55.4		EK014C51
K10F81J	s2010	05	16.02913	1	+	4955.2438	-	3476.8943	+	3324.8798	EK014C51
K10F81J	S2010	05	16.09522	20	43	43.46	+29	26	30.4		EK014C51
K10F81J	s2010	05	16.09522	1	+	4945.6070	-	3453.5344	+	3363.3991	EK014C51
K10F81J	S2010	05	16.22765	20	44	12.26	+29	21	23.6		EK014C51
K10F81J	s2010	05	16.22765	1	+	4977.6762	-	3473.5456	+	3295.0818	EK014C51
K10F81J	S2010	05	16.29374	20	44	26.66	+29	18	51.3		EK014C51
K10F81J	s2010	05	16.29374	1	+	4968.1995	-	3450.5489	+	3333.0561	EK014C51
K10F81J	S2010	05	16.35995	20	44	41.15	+29	16	18.3		EK014C51
K10F81J	s2010	05	16.35995	1	+	4984.2161	-	3460.6545	+	3298.3200	EK014C51
K10F81J	S2010	05	16.42604	20	44	55.57	+29	13	45.4		EK014C51
K10F81J	s2010	05	16.42604	1	+	4974.5105	-	3437.6525	+	3336.5973	EK014C51
K10F81J	S2010	05	16.49226	20	45	10.11	+29	11	11.5		EK014C51
K10F81J	s2010	05	16.49226	1	+	4990.2858	-	3447.3725	+	3303.1888	EK014C51
K10F81J	S2010	05	16.62456	20	45	38.99	+29	05	59.7		EK014C51
K10F81J	s2010	05	16.62456	1	+	4996.3161	-	3433.7000	+	3308.2279	EK014C51
K10F81J	S2010	05	16.69077	20	45	53.61	+29	03	27.6		EK014C51
K10F81J	s2010	05	16.69077	1	+	5012.3242	-	3443.4201	+	3273.6469	EK014C51
K10F81J	S2010	05	16.75686	20	46	08.14	+29	00	51.3		EK014C51
K10F81J	s2010	05	16.75686	1	+	5002.9037	-	3420.5898	+	3311.4097	EK014C51
K10F81J	S2010	05	16.88917	20	46	37.22	+28	55	36.3		EK014C51
K10F81J	s2010	05	16.88917	1	+	5009.3189	-	3407.8577	+	3314.8776	EK014C51
K10F81J	S2010	05	17.15390	20	47	35.69	+28	45	01.1		EK014C51
K10F81J	s2010	05	17.15390	1	+	5047.7623	-	3413.4879	+	3251.1267	EK014C51
K10F81J	S2010	05	17.28621	20	48	05.05	+28	39	41.8		EK014C51
K10F81J	s2010	05	17.28621	1	+	5054.1399	-	3400.3184	+	3254.8928	EK014C51
K10G07R	C2010	05	18.14149	11	24	50.29	+63	45	05.1	20.2 V	EK014703
K10G07R	C2010	05	18.14548	11	24	46.98	+63	45	08.6	19.9 V	EK014703
K10G07R	C2010	05	18.14948	11	24	43.99	+63	45	14.4	19.5 V	EK014703
K10G07R	C2010	05	18.15346	11	24	40.89	+63	45	20.4	19.3 V	EK014703
K10G330	JC2010	05	18.31597	11	04	34.53	+58	26	39.5	19.9 C	EK014695
K10G330	JC2010	05	18.32475	11	04	32.53	+58	26	51.4	19.7 C	EK014695
K10G330	JC2010	05	18.33379	11	04	30.45	+58	27	03.6	19.7 C	EK014695
K10G62W	HC2010	05	18.34629	16	26	23.27	+37	32	20.5	21.0 V	EK014691
K10G62W	HC2010	05	18.35260	16	26	21.86	+37	32	09.9	21.0 V	EK014691
K10G62X	HC2010	05	18.37255	18	04	10.81	+17	00	21.2		EK014691
K10G62X	HC2010	05	18.37845	18	04	09.99	+17	00	27.1		EK014691
K10G62X	HC2010	05	18.38303	18	04	09.54	+17	00	30.9		EK014691
K10J33L	JC2010	05	18.31986	15	03	21.84	-17	01	53.1	20.6 C	EK014695
K10J33L	JC2010	05	18.34156	15	03	19.55	-17	01	46.3	20.2 C	EK014695
K10J33L	JC2010	05	18.35193	15	03	18.47	-17	01	43.4	20.2 C	EK014695
K10J34V	KC2010	05	17.07444	14	54	32.98	+00	35	54.6	16.5	EK014932
K10J34V	KC2010	05	17.07697	14	54	32.76	+00	36	24.4	16.5	EK014932
K10J34V	KC2010	05	17.07953	14	54	32.54	+00	36	55.0	16.5	EK014932
K10J34V	C2010	05	19.17304	14	52	07.09	+09	04	32.7	16.0 R	EK014H26
K10J34V	C2010	05	19.17341	14	52	07.04	+09	04	39.4	16.0 R	EK014H26
K10J34V	C2010	05	19.17380	14	52	06.99	+09	04	45.8	16.1 R	EK014H26

K10J34V	C2010	05	19.17416	14	52	06.94	+09	04	52.3	16.0	R	EK014H26
K10J34V	C2010	05	19.17527	14	52	06.80	+09	05	12.4	16.1	R	EK014H26
K10J34V	C2010	05	19.17564	14	52	06.76	+09	05	18.3	16.1	R	EK014H26
K10J34V	C2010	05	19.17601	14	52	06.74	+09	05	24.9	15.9	R	EK014H26
K10J34V	C2010	05	19.17638	14	52	06.66	+09	05	31.6	15.9	R	EK014H26
K10J41K	C2010	05	16.30727	14	45	29.02	+35	55	15.7	19.5	R	EK014926
K10J41K	C2010	05	16.31399	14	45	28.65	+35	54	35.9	19.6	R	EK014926
K10J41K	C2010	05	16.32049	14	45	28.19	+35	53	57.9	19.4	R	EK014926
K10J71N	KC2010	05	17.08952	11	22	09.64	+57	23	47.3	19.1		EK014932
K10J71N	KC2010	05	17.09388	11	22	06.06	+57	23	35.5	19.2		EK014932
K10J71N	KC2010	05	17.10226	11	21	59.11	+57	23	13.6	18.6		EK014932
K10J71N	C2010	05	17.28108	11	19	35.62	+57	15	36.1	18.1	R	EK014926
K10J71N	C2010	05	17.28273	11	19	34.24	+57	15	31.1	18.0	R	EK014926
K10J71N	C2010	05	17.28440	11	19	32.87	+57	15	25.9	18.1	R	EK014926
K10J71N	C2010	05	19.20257	10	49	57.72	+55	19	04.0	18.3	R	EK014H26
K10J71N	C2010	05	19.20420	10	49	55.75	+55	18	55.1	18.1	R	EK014H26
K10J71N	C2010	05	19.21346	10	49	45.36	+55	18	04.0	18.6	R	EK014H26
K10J71N	C2010	05	19.21433	10	49	44.40	+55	17	59.6	19.0	R	EK014H26
K10J71N	C2010	05	19.21520	10	49	43.44	+55	17	54.5	19.2	R	EK014H26
K10J71N	C2010	05	19.21605	10	49	42.37	+55	17	49.3	19.2	R	EK014H26
K10J71N	C2010	05	19.21692	10	49	41.52	+55	17	44.2	19.0	R	EK014H26
K10J87F	S2010	05	13.43501	12	41	22.98	+62	22	16.1			EK014C51
K10J87F	s2010	05	13.43501	1	-	804.4805	+ 1889.4688	+ 6585.6147				EK014C51
K10J87F	C2010	05	19.18944	13	10	45.56	+57	42	57.8	20.4	V	EK014691
K10J87F	C2010	05	19.19338	13	10	46.53	+57	42	45.8	20.2	V	EK014691
K10J87F	C2010	05	19.19646	13	10	47.22	+57	42	37.0	19.9	V	EK014691
K10J87G	tC2010	05	18.38818	20	14	25.17	+13	27	38.4	20.3	V	EK014691
K10J87G	tC2010	05	18.39152	20	14	23.84	+13	27	39.9	20.1	V	EK014691
K10J87G	tC2010	05	18.39480	20	14	22.48	+13	27	41.2	19.8	V	EK014691
K10J88E	C2010	05	17.29676	14	04	38.84	-03	32	34.3	18.8	R	EK014926
K10J88E	C2010	05	17.29841	14	04	39.16	-03	32	34.5	18.8	R	EK014926
K10J88E	C2010	05	17.30006	14	04	39.50	-03	32	34.9	18.8	R	EK014926
K10J88E	C2010	05	18.38026	14	08	10.87	-03	35	42.8	19.1	V	EK014291
K10J88E	C2010	05	18.38397	14	08	11.53	-03	35	43.6	19.2	V	EK014291
K10J88E	C2010	05	18.38778	14	08	12.17	-03	35	44.1	19.2	V	EK014291
K10J88F	C2010	05	17.40919	14	40	27.88	+31	02	21.5	19.4	R	EK014926
K10J88F	C2010	05	17.41154	14	40	27.54	+31	02	23.5	19.3	R	EK014926
K10J88F	C2010	05	17.41390	14	40	27.22	+31	02	25.6	19.2	R	EK014926
K10J88G	C2010	05	17.41590	14	19	35.02	+42	46	13.1	18.3	R	EK014926
K10J88G	C2010	05	17.41755	14	19	34.79	+42	46	24.4	18.5	R	EK014926
K10J88G	C2010	05	17.41920	14	19	34.61	+42	46	36.0	18.5	R	EK014926
K10JB0H	C2010	05	17.34221	17	13	41.87	-12	54	28.5	18.7	R	EK014926
K10JB0H	C2010	05	17.34385	17	13	46.12	-12	54	42.0	19.0	R	EK014926
K10JB0H	C2010	05	17.34551	17	13	50.40	-12	54	55.3	19.5	R	EK014926
05604	C2010	05	18.70016	14	42	04.84	-40	51	49.4	15.1	R	EK014D96
05604	C2010	05	18.72059	14	41	57.31	-40	51	27.2	15.0	R	EK014D96
37638	HC2010	05	17.35469	15	57	45.20	-10	24	35.3			EK014691
37638	HC2010	05	17.37241	15	57	43.50	-10	24	31.4			EK014691
37638	HC2010	05	17.39012	15	57	41.80	-10	24	28.1			EK014691
66400	C2010	05	17.93911	15	52	57.48	-05	31	01.5	17.4	V	EK014J75
66400	C2010	05	17.95311	15	52	53.07	-05	31	01.0	17.6	V	EK014J75
66400	C2010	05	17.96713	15	52	48.62	-05	31	00.0	18.0	V	EK014J75
89958	HC2010	05	14.36116	16	05	49.32	-08	56	18.0			EK014691
89958	HC2010	05	14.37880	16	05	47.64	-08	56	12.9	21.4	V	EK014691
89958	HC2010	05	14.39646	16	05	46.05	-08	56	04.6			EK014691
F3814	C2010	05	18.47226	12	36	39.99	-08	27	00.0	18.9	V	EK014E12
F3814	C2010	05	18.48520	12	36	38.91	-08	26	52.3	18.9	V	EK014E12
F3814	C2010	05	18.49826	12	36	37.72	-08	26	43.1	18.7	V	EK014E12
F3814	C2010	05	18.51129	12	36	36.72	-08	26	34.7	19.2	V	EK014E12
G2581	HC2010	05	17.42222	16	20	14.15	-01	52	38.4			EK014691
L8017	C2010	05	18.34997	15	00	46.47	+03	52	54.0	18.1	V	EK014703
L8017	C2010	05	18.35626	15	00	46.04	+03	53	04.7	18.2	V	EK014703
L8017	C2010	05	18.36258	15	00	45.50	+03	53	14.4	17.9	V	EK014703
L8017	C2010	05	18.37565	15	00	44.53	+03	53	36.4	17.7	V	EK014703
L8863	C2010	04	06.82036	09	05	11.67	+25	32	20.1	16.1	R	EK014A27
L8863	C2010	04	06.82519	09	05	13.53	+25	32	20.0	16.4	R	EK014A27
L8863	C2010	04	06.82951	09	05	15.21	+25	32	19.8	16.5	R	EK014A27
L8863	C2010	04	06.83328	09	05	16.62	+25	32	19.7	16.2	R	EK014A27

A. U. Tomatic

(C) Copyright 2010 MPC

M.P.E.C. 2010-K14



[Read MPEC 2010-K13](#)



[Read MPEC 2010-K15](#)

Display

MPEC number:

Clear

Enter an [MPEC](#) number in one of the following forms:

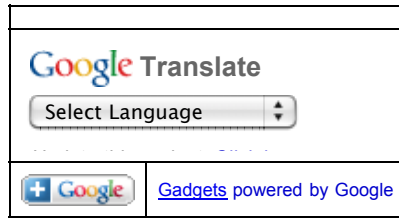
- 1997-B01 (the full form)
- J97B01 (the packed version of the full form)
- B01 (the abbreviated form)



Choose a language to translate this page!




Select to language ▾



Google Translate

Select Language ▾

 [Gadgets powered by Google](#)

