

[Printer-friendly version](#)

Search MPC/CBAT

IAU Minor Planet Center

MPC Operations Status

[Processing \(Info\)](#)[ECS: Accessible](#)

Observer Services (NEOs)

NEO Services Overview
 NEO Confirmation
 NEO Confirmation (RA order)
 NEO Ratings
 NEO Page
 NEO Observation Planning Aid
 NEOChecker
 NEOCMTChecker

Observer Services

Services Overview
 IAUMail
 Minor Planet & Comet Ephem.
 Natural Satellite Ephemerides
 New Object Ephemerides
 MPChecker
 CMTChecker
 Distant Artificial Satellites
 Observing List Customizer
 Sky Coverage

Orbital Elements

Orbital Elements Overview
 MPCORB
 Orbital Elements for Programs
 MPCAT
 MPCUPDATE

Astrometric Observations

MPCAT-OBS
 MPCOBS

Publications

Publications Overview
 MPECs
 MPC Archive
 MPC RSS Feeds
 CBAT RSS Feeds

Documentation

Documentation Overview
 Minor Body Astrometry
 MPC Status Page
 What's New

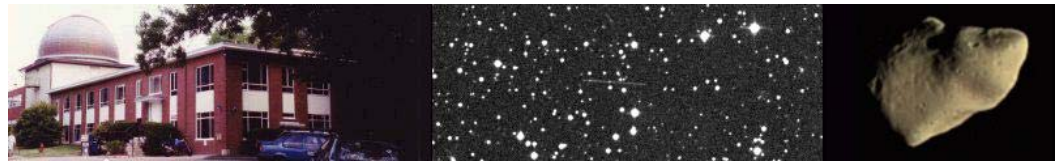
Lists and Plots

Lists and Plots Overview
 Minor Planets
 Comets
 Animations

General Information

Astronomical Headlines
 Press Information Sheets

General



MPEC 2010-A43 : 2010 AE3

The following [Minor Planet Electronic Circular](#) may be linked-to from your own Web pages, but must **not** otherwise be [redistributed electronically](#).

[Read MPEC 2010-A42](#)[Read MPEC 2010-A44](#)

M.P.E.C. 2010-A43

Issued 2010 Jan. 9, 17:31 UT

The Minor Planet Electronic Circulars contain information on unusual minor planets and routine data on comets. They are published on behalf of Commission 20 of the International Astronomical Union by the Minor Planet Center, Smithsonian Astrophysical Observatory, Cambridge, MA 02138, U.S.A.

Prepared using the [Tamkin Foundation Computer Network](#)

MPC@CFA.HARVARD.EDU

URL <http://www.cfa.harvard.edu/iau/mpc.html> ISSN 1523-6714

2010 AE3

Observations:

K10A03E*	C2010	01	08.30541	07	54	49.46	+00	31	01.7	18.9	V	EA043703
K10A03E	C2010	01	08.31232	07	54	49.96	+00	33	10.8	19.2	V	EA043703
K10A03E	C2010	01	08.31923	07	54	50.58	+00	35	19.4	18.2	V	EA043703
K10A03E	C2010	01	08.32620	07	54	51.08	+00	37	29.7	19.1	V	EA043703
K10A03E	C2010	01	08.37470	07	54	54.96	+00	52	25.7	18.8	R	EA043854
K10A03E]C2010	01	08.37816607	54	55.30	+00	53	29.7		18.3	C	EA043695
K10A03E]C2010	01	08.37893	07	54	55.31	+00	53	43.4	18.6	R	EA043854
K10A03E]C2010	01	08.37904307	54	55.37	+00	53	45.9		18.3	C	EA043695
K10A03E]C2010	01	08.37964407	54	55.41	+00	53	56.9		18.3	C	EA043695
K10A03E]C2010	01	08.38024307	54	55.46	+00	54	07.9		18.3	C	EA043695
K10A03E	C2010	01	08.38317	07	54	55.61	+00	55	01.4	18.6	R	EA043854
K10A03E	C2010	01	09.23477	07	56	42.07	+04	55	40.1	18.5	V	EA043G96
K10A03E	C2010	01	09.23587	07	56	42.14	+04	55	57.6	18.6	V	EA043G96
K10A03E	C2010	01	09.23693	07	56	42.21	+04	56	14.0	18.7	V	EA043G96
K10A03E	C2010	01	09.23800	07	56	42.28	+04	56	30.7	18.7	V	EA043G96
K10A03E	C2010	01	09.23906	07	56	42.36	+04	56	47.3	18.5	V	EA043G96
K10A03E	C2010	01	09.26186	07	56	43.40	+05	02	40.6	17.9	R	EA043H01
K10A03E	C2010	01	09.26968	07	56	43.91	+05	04	42.4	17.9	R	EA043H01
K10A03E	C2010	01	09.27729	07	56	44.39	+05	06	40.6	18.4	R	EA043H01
K10A03E	C2010	01	09.28358	07	56	44.79	+05	08	18.4	17.9	R	EA043H01

Observer details:

[695 Kitt Peak.](#) Observers M. Trueblood, L. Lebofsky. Measurer R. Crawford. 2.1-m f/7.7 Ritchey-Chretien + CCD.

[703 Catalina Sky Survey.](#) Observer R. E. Hill. Measurers J. D. Ahern, E. C. Beshore, A. Boattini, G. J. Garradd, A. R. Gibbs, A. D. Grauer, R. E. Hill, R. A. Kowalski, S. M. Larson, R. H. McNaught. 0.68-m Schmidt + CCD.

[854 Sabino Canyon Observatory, Tucson.](#) Observer J. E. McGaha. 0.36-m f/10.0 Schmidt-Cassegrain + CCD.

[G96 Mt. Lemmon Survey.](#) Observer A. Boattini. Measurers J. D. Ahern, E. C. Beshore, A. Boattini, G. J. Garradd, A. R. Gibbs, A. D. Grauer, R. E. Hill, R. A. Kowalski, S. M. Larson, R. H. McNaught. 1.5-m reflector + CCD.

[H01 Magdalena Ridge Observatory, Socorro.](#) Observer W. H. Ryan. 2.4-m f/8.9 reflector + CCD.

Orbital elements:

2010 AE3 Earth [MOID](#) = 0.0415 AU
 Epoch 2010 Jan. 4.0 TT = JDT 2455200.5 MPC
 M 15.54814 (2000.0) P Q
 n 0.37304015 Peri. 289.54619 +0.70072259 -0.69450853

Contact Us
 Index
 Site Map
 Search Site
 Tech Info
 Documentation
Links
 Minor Planet Center
 Central Bureau for Astro. Tel.
 International Comet Quarterly
 Smithsonian Astro. Obs.

Translate



Choose a language to translate this page!



Select to language



Select Language

Gadgets powered by Google

a	1.9111686	Node	114.83756	+0.70324528	+0.63386289
e	0.12014130	Incl.	10.36237	+0.12014130	+0.34040526
P	2.1	H	23.6	G	0.15
		U			8

Residuals in seconds of arc

100108 703	0.1+	0.5-	100108 695	0.1-	0.1-	100109 G96	0.1+	0.1-
100108 703	0.7-	0.1-	100108 695	0.2-	0.2-	100109 G96	0.2+	0.1-
100108 703	0.4+	0.1-	100108 695	0.1-	0.2-	100109 H01	0.3-	0.0
100108 703	0.4-	0.7+	100108 854	0.1+	0.3+	100109 H01	0.2-	0.1+
100108 854	0.4+	0.2+	100109 G96	0.3+	0.2-	100109 H01	0.3-	0.1+
100108 695	0.1-	0.2-	100109 G96	0.2+	0.1+	100109 H01	0.3-	0.3+
100108 854	0.6+	0.2+	100109 G96	0.2+	0.1-			

Ephemeris:

2010 AE3 a,e,i = 1.91, 0.57, 10 q = 0.8293

Date	TT	R. A. (2000)	Decl.	Delta	r	Elong.	Phase	V
2010 01 04		07 38.54	-32 48.9	0.0435	1.008	123.6	54.4	18.8
2010 01 05		07 44.11	-22 59.7	0.0460	1.015	133.2	44.9	18.7
2010 01 06		07 48.29	-14 24.0	0.0498	1.023	141.7	36.6	18.6
2010 01 07		07 51.54	-07 08.0	0.0546	1.030	148.8	29.6	18.6
2010 01 08		07 54.11	-01 05.6	0.0601	1.038	154.8	23.8	18.7
2010 01 09		07 56.19	+03 54.0	0.0662	1.046	159.7	19.0	18.8
2010 01 10		07 57.90	+08 02.2	0.0727	1.053	163.8	15.1	18.9
2010 01 11		07 59.32	+11 28.9	0.0796	1.061	167.3	11.8	19.0
2010 01 12		08 00.51	+14 22.5	0.0868	1.069	170.2	9.0	19.0
2010 01 13		08 01.52	+16 49.5	0.0943	1.077	172.6	6.8	19.1
2010 01 14		08 02.38	+18 54.9	0.102	1.085	174.6	4.9	19.2
2010 01 15		08 03.12	+20 42.7	0.110	1.093	176.0	3.6	19.3
2010 01 16		08 03.76	+22 16.2	0.118	1.101	176.6	3.0	19.5
2010 01 17		08 04.32	+23 37.6	0.126	1.109	176.4	3.2	19.6
2010 01 18		08 04.82	+24 49.0	0.134	1.117	175.6	3.9	19.8
2010 01 19		08 05.26	+25 51.8	0.142	1.126	174.5	4.8	20.0
2010 01 20		08 05.67	+26 47.5	0.151	1.134	173.4	5.7	20.2
2010 01 21		08 06.03	+27 36.9	0.159	1.142	172.3	6.6	20.4
2010 01 22		08 06.37	+28 20.9	0.168	1.151	171.2	7.6	20.6
2010 01 23		08 06.69	+29 00.3	0.177	1.159	170.1	8.4	20.7
2010 01 24		08 07.00	+29 35.5	0.186	1.167	169.0	9.3	20.9

Timothy B. Spahr

(C) Copyright 2010 MPC

M.P.E.C. 2010-A43



[Read MPEC 2010-A42](#)



[Read MPEC 2010-A44](#)