

[Printer-friendly version](#)

Search MPC/CBAT

IAU Minor Planet Center

MPC Operations Status

[Processing \(Info\)](#)[ECS: Accessible](#)

Observer Services (NEOs)

NEO Services Overview
 NEO Confirmation
 NEO Confirmation (RA order)
 NEO Ratings
 NEO Page
 NEO Observation Planning Aid
 NEOChecker
 NEOCMTChecker

Observer Services

Services Overview
 IAUMail
 Minor Planet & Comet Ephem.
 Natural Satellite Ephemerides
 New Object Ephemerides
 MPChecker
 CMTChecker
 Distant Artificial Satellites
 Observing List Customizer
 Sky Coverage

Orbital Elements

Orbital Elements Overview
 MPCORB
 Orbital Elements for Programs
 MPCAT
 MPCUPDATE

Astrometric Observations

MPCAT-OBS
 MPCOBS

Publications

Publications Overview
 MPECs
 MPC Archive

MPC RSS Feeds
 CBAT RSS Feeds

Documentation

Documentation Overview
 Minor Body Astrometry
 MPC Status Page
 What's New

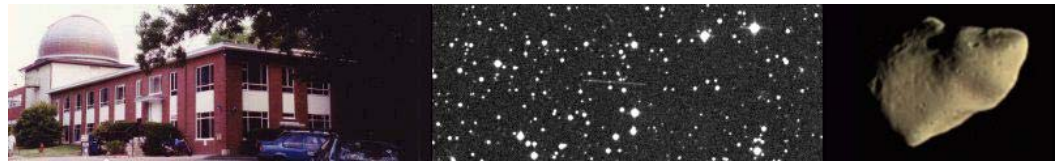
Lists and Plots

Lists and Plots Overview
 Minor Planets
 Comets
 Animations

General Information

Astronomical Headlines
 Press Information Sheets

General



MPEC 2010-A42 : 2010 AD3

The following [Minor Planet Electronic Circular](#) may be linked-to from your own Web pages, but must not otherwise be [redistributed electronically](#).

[Read MPEC 2010-A41](#)[Read MPEC 2010-A43](#)

M.P.E.C. 2010-A42

Issued 2010 Jan. 9, 17:28 UT

The Minor Planet Electronic Circulars contain information on unusual minor planets and routine data on comets. They are published on behalf of Commission 20 of the International Astronomical Union by the Minor Planet Center, Smithsonian Astrophysical Observatory, Cambridge, MA 02138, U.S.A.

Prepared using the [Tamkin Foundation Computer Network](#)

MPC@CFA.HARVARD.EDU

URL <http://www.cfa.harvard.edu/iau/mpc.html> ISSN 1523-6714

2010 AD3

Observations:

K10A03D*	C2010	01	08.21126	06	09	55.32	+18	18	39.4	20.6	V	EA042G96
K10A03D	C2010	01	08.21713	06	09	56.62	+18	18	22.9	21.1	V	EA042G96
K10A03D	C2010	01	08.22301	06	09	57.88	+18	18	06.9	20.9	V	EA042G96
K10A03D	C2010	01	08.22890	06	09	59.19	+18	17	50.4	20.7	V	EA042G96
K10A03D	C2010	01	08.23479	06	10	00.47	+18	17	34.1	20.6	V	EA042G96
K10A03D	C2010	01	08.28216	06	10	10.74	+18	15	20.9	20.0	V	EA042G96
K10A03D	C2010	01	08.28348	06	10	11.02	+18	15	17.6	19.8	V	EA042G96
K10A03D	C2010	01	08.28479	06	10	11.31	+18	15	13.9	20.1	V	EA042G96
K10A03D	C2010	01	08.33259706	10	21.80	+18	12	58.6	20.6	C	EA042695	
K10A03D	C2010	01	08.33339706	10	21.98	+18	12	56.4	20.8	C	EA042695	
K10A03D	C2010	01	08.33407106	10	22.14	+18	12	54.4	20.6	C	EA042695	
K10A03D	C2010	01	09.19771	06	13	58.15	+17	31	30.2	20.6	V	EA042G96
K10A03D	C2010	01	09.19843	06	13	58.32	+17	31	28.4	21.1	V	EA042G96
K10A03D	C2010	01	09.19914	06	13	58.40	+17	31	27.0	20.7	V	EA042G96
K10A03D	C2010	01	09.19985	06	13	58.56	+17	31	25.0	20.9	V	EA042G96
K10A03D	C2010	01	09.20057	06	13	58.79	+17	31	22.7	21.1	V	EA042G96
K10A03D	C2010	01	09.20738	06	14	00.06	+17	31	02.1	19.7	R	EA042H01
K10A03D	C2010	01	09.21644	06	14	02.11	+17	30	35.7	19.8	R	EA042H01
K10A03D	C2010	01	09.22630	06	14	04.36	+17	30	06.9	20.4	R	EA042H01
K10A03D	C2010	01	09.23292	06	14	05.88	+17	29	47.4	20.3	R	EA042H01
K10A03D	C2010	01	09.25929	06	14	12.15	+17	28	32.0	20.4	V	EA042G96
K10A03D	C2010	01	09.26216	06	14	12.84	+17	28	23.2	20.2	V	EA042G96
K10A03D	C2010	01	09.26361	06	14	13.12	+17	28	19.2	20.2	V	EA042G96
K10A03D	C2010	01	09.26505	06	14	13.45	+17	28	14.9	19.8	V	EA042G96

Observer details:

[695 Kitt Peak.](#) Observers M. Trueblood, L. Lebofsky. Measurer R. Crawford.

2.1-m f/7.7 Ritchey-Chretien + CCD.

[G96 Mt. Lemmon Survey.](#) Observer A. Boattini. Measurers J. D. Ahern,

E. C. Beshore, A. Boattini, G. J. Garradd, A. R. Gibbs, A. D. Grauer,

R. E. Hill, R. A. Kowalski, S. M. Larson, R. H. McNaught. 1.5-m reflector + CCD.

[H01 Magdalena Ridge Observatory, Socorro.](#) Observer W. H. Ryan. 2.4-m f/8.9 reflector + CCD.

Orbital elements:

2010 AD3

Epoch 2010 Jan. 4.0 TT = JDT 2455200.5

M 355.33437

(2000.0)

P

Earth [MOID](#) = 0.1079 AU

MPC

Q

n 0.19426125

Peri. 209.70899

-0.60693743

-0.79096511

a 2.9526498

Node 277.76784

+0.74371440

-0.53089155

e 0.6323590

Incl. 4.48422

+0.28020679

-0.30418475

Contact Us

Index

Site Map

Search Site

Tech Info

Documentation

Links

Minor Planet Center

Central Bureau for Astro. Tel.

International Comet Quarterly

Smithsonian Astro. Obs.

Translate



Choose a language to translate this page!



Select to language



Select Language

Gadgets powered by Google

P	5.07	H	23.9	G	0.15	U	8				
Residual	W3C HTML 4.01										
100108	G96	0.1+	0.3-	100108	695	0.0	0.2+	100109	H01	0.1-	0.4+
100108	G96	0.2-	0.0	100108	695	0.0	0.2+	100109	H01	0.4-	0.3+
100108	G96	0.2+	0.1-	100109	G96	0.6+	0.8-	100109	H01	0.2-	0.0
100108	G96	0.2+	0.0	100109	G96	0.7+	0.5-	100109	G96	0.0	0.2+
100108	G96	0.0	0.3-	100109	G96	0.5-	0.1+	100109	G96	0.6+	0.2-
100108	G96	0.1-	0.1+	100109	G96	0.5-	0.2+	100109	G96	0.1-	0.1+
100108	G96	0.1-	0.1+	100109	G96	0.4+	0.1-	100109	G96	0.1-	0.0

Ephemeris:

2010 AD3		a, e, i = 2.95, 0.63, 4					q = 1.0855	
Date	TT	R. A. (2000)	Decl.	Delta	r	Elong.	Phase	V
2010 01 04		05 54.57	+21 17.3	0.151	1.130	165.2	12.8	20.8
2010 01 14		06 36.16	+13 12.4	0.122	1.101	162.4	15.7	20.4
2010 01 24		07 34.95	+01 59.3	0.109	1.087	158.9	19.0	20.2
2010 02 03		08 41.16	-09 05.3	0.113	1.088	153.6	23.8	20.5
2010 02 13		09 38.46	-16 03.0	0.134	1.105	150.4	26.2	20.9
2010 02 23		10 19.63	-18 43.8	0.165	1.137	151.3	24.7	21.4
2010 03 05		10 47.02	-18 47.9	0.206	1.182	154.7	21.0	21.9

Timothy B. Spahr

(C) Copyright 2010 MPC

M.P.E.C. 2010-A42



[Read MPEC 2010-A41](#)



[Read MPEC 2010-A43](#)