

[Printer-friendly version](#)




# IAU Minor Planet Center

## MPC Operations Status

[Processing \(Info\)](#)

[ECS: Accessible](#)

## Observer Services (NEOs)

NEO Services Overview  
 NEO Confirmation  
 NEO Confirmation (RA order)  
 NEO Ratings  
 NEO Page  
 NEO Observation Planning Aid  
 NEOChecker  
 NEOCMTChecker

## Observer Services

Services Overview  
 IAUMail  
 Minor Planet & Comet Ephem.  
 Natural Satellite Ephemerides  
 New Object Ephemerides  
 MPChecker  
 CMTChecker  
 Distant Artificial Satellites  
 Observing List Customizer  
 Sky Coverage

## Orbital Elements

Orbital Elements Overview  
 MPCORB  
 Orbital Elements for Programs  
 MPCAT  
 MPCUPDATE

## Astrometric Observations

MPCAT-OBS  
 MPCOBS

## Publications

Publications Overview  
 MPECs  
 MPC Archive  
 MPC RSS Feeds  
 CBAT RSS Feeds

## Documentation

Documentation Overview  
 Minor Body Astrometry  
 MPC Status Page  
 What's New

## Lists and Plots

Lists and Plots Overview  
 Minor Planets

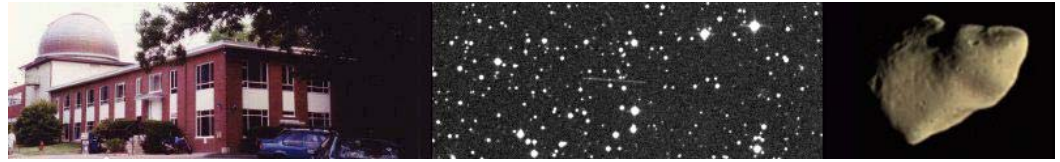
## Comets

Animations

## General Information

Astronomical Headlines  
 Press Information Sheets

## General



## MPEC 2010-A38 : 2010 AO2

The following [Minor Planet Electronic Circular](#) may be linked-to from your own Web pages, but must **not** otherwise be [redistributed electronically](#).



[Read MPEC 2010-A37](#)

M.P.E.C. 2010-A38

Issued 2010 Jan. 8, 17:56 UT

The Minor Planet Electronic Circulars contain information on unusual minor planets and routine data on comets. They are published on behalf of Commission 20 of the International Astronomical Union by the Minor Planet Center, Smithsonian Astrophysical Observatory, Cambridge, MA 02138, U.S.A.

Prepared using the [Tamkin Foundation Computer Network](#)

MPC@CFA.HARVARD.EDU

URL <http://www.cfa.harvard.edu/iau/mpec.html> ISSN 1523-6714

## 2010 AO2

### Observations:

K10A020*	C2010	01	07.39101	08	13	28.56	+20	22	01.9	20.6	V	EA038G96
K10A020	C2010	01	07.39819	08	13	26.47	+20	21	42.0	20.9	V	EA038G96
K10A020	C2010	01	07.40536	08	13	24.38	+20	21	22.4	21.1	V	EA038G96
K10A020	C2010	01	07.41259	08	13	22.26	+20	21	02.6	21.1	V	EA038G96
K10A020	C2010	01	07.49235	08	12	58.97	+20	17	19.8	19.6	R	EA038H01
K10A020	C2010	01	07.49998	08	12	56.77	+20	16	58.3	19.6	R	EA038H01
K10A020	C2010	01	07.51120	08	12	53.52	+20	16	26.9	19.5	R	EA038H01
K10A020	C2010	01	07.51994	08	12	50.99	+20	16	02.4	19.4	R	EA038H01
K10A020	C2010	01	07.52972	08	12	48.20	+20	15	34.9	19.3	R	EA038H01
K10A020	tC2010	01	08.20065	08	09	39.86	+19	44	17.8			EA038291
K10A020	tC2010	01	08.20466	08	09	38.72	+19	44	07.5			EA038291
K10A020	tC2010	01	08.20868	08	09	37.53	+19	43	55.6			EA038291
K10A020	]C2010	01	08.25720108	09	23.03	+19	41	39.2		20.7	V	EA038695
K10A020	]C2010	01	08.25848408	09	22.65	+19	41	35.6		20.9	V	EA038695
K10A020	]C2010	01	08.25916708	09	22.44	+19	41	33.7		20.7	V	EA038695
K10A020	]C2010	01	08.25985008	09	22.24	+19	41	31.8		20.7	V	EA038695
K10A020	C2010	01	08.38106	08	08	45.38	+19	35	45.1	21.3	V	EA038G96
K10A020	C2010	01	08.38637	08	08	43.76	+19	35	29.8	20.8	V	EA038G96
K10A020	C2010	01	08.39168	08	08	42.14	+19	35	14.4	21.1	V	EA038G96
K10A020	C2010	01	08.39699	08	08	40.52	+19	34	58.7	21.4	V	EA038G96
K10A020	C2010	01	08.40230	08	08	39.01	+19	34	43.3	21.1	V	EA038G96

### Observer details:

[291 LPL/Spacewatch II.](#) Observer R. S. McMillan. 1.8-m f/2.7 reflector + CCD.

[695 Kitt Peak.](#) Observers M. Trueblood, L. Lebofsky. Measurer R. Crawford. 2.1-m f/7.7 Ritchey-Chretien + CCD.

[G96 Mt. Lemmon Survey.](#) Observers E. Beshore, A. Boattini. Measurers J. D. Ahern, E. C. Beshore, A. Boattini, G. J. Garradd, A. R. Gibbs, A. D. Grauer, R. E. Hill, R. A. Kowalski, S. M. Larson, R. H. McNaught. 1.5-m reflector + CCD.

[H01 Magdalena Ridge Observatory, Socorro.](#) Observer W. H. Ryan. 2.4-m f/8.9 reflector + CCD.

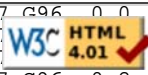
### Orbital elements:

2010 AO2		Earth MOID = 0.1702 AU				
Epoch	2010 Jan. 4.0 TT = JDT 2455200.5	MPC				
M	244.63857 (2000.0)	P	Q			
n	0.95750542	Peri.	322.56808	-0.26193095	+0.90729318	
a	1.0194718	Node	290.08881	-0.77895065	-0.39998397	
e	0.3542506	Incl.	20.50349	-0.56976142	+0.12973784	
P	1.03	H	22.4	G	0.15	
					U	9

Residuals in seconds of arc

- Contact Us
- Index
- Site Map
- Search Site
- Tech Info
- Documentation

100107 G96	0.0	0.1-	100107 H01	0.4-	0.0	100108 695	0.6+	0.1+
100107		0.2-	100107 H01	0.2-	0.0	100108 695	0.7+	0.1+
100107		0.1-	100108 291	0.7-	0.4-	100108 G96	0.3-	0.1-
100107 G96	0.2+	0.1+	100108 291	0.1+	0.6+	100108 G96	0.3-	0.0
100107 H01	0.0	0.1+	100108 291	0.1+	0.1-	100108 G96	0.4-	0.1-
100107 H01	0.0	0.0	100108 695	0.5+	0.1+	100108 G96	0.5-	0.4-
100107 H01	0.2-	0.0	100108 695	0.6+	0.1+	100108 G96	1.0+	0.4-



**Links**

- Minor Planet Center
- Central Bureau for Astro. Tel.
- International Comet Quarterly*
- Smithsonian Astro. Obs.

Ephemeris:

2010 AO2		a, e, i = 1.02, 0.35, 21					q = 0.6583		
Date	TT	R.	A. (2000)	Decl.	Delta	r	Elong.	Phase	V
2010 01 04		08	28.20	+22 43.6	0.286	1.255	159.2	16.1	21.1
2010 01 14		07	38.65	+14 27.8	0.233	1.215	173.0	5.6	20.1
2010 01 24		06	36.41	+02 44.9	0.211	1.170	148.9	25.8	20.5
2010 02 03		05	37.59	-08 54.4	0.220	1.120	122.6	47.9	21.2
2010 02 13		04	52.46	-17 30.4	0.249	1.065	101.4	65.4	21.8

**Translate**



Choose a language to translate this page!



Select to language



Select Language

Gadgets powered by Google

Timothy B. Spahr

(C) Copyright 2010 MPC

M.P.E.C. 2010-A38



[Read MPEC 2010-A37](#)