

[Printer-friendly version](#)Google Search MPC/CBAT

IAU Minor Planet Center

MPC Operations Status

[Processing \(Info\)](#)[ECS: Accessible](#)

Observer Services (NEOs)

NEO Services Overview
 NEO Confirmation
 NEO Confirmation (RA order)
 NEO Ratings
 NEO Page
 NEO Observation Planning Aid
 NEOChecker
 NEOCMTChecker

Observer Services

Services Overview
 IAUMail
 Minor Planet & Comet Ephem.
 Natural Satellite Ephemerides
 New Object Ephemerides
 MPChecker
 CMTChecker
 Distant Artificial Satellites
 Observing List Customizer
 Sky Coverage

Orbital Elements

Orbital Elements Overview
 MPCORB
 Orbital Elements for Programs
 MPCAT
 MPCUPDATE

Astrometric Observations

MPCAT-OBS
 MPCOBS

Publications

Publications Overview
 MPECs
 MPC Archive
 MPC RSS Feeds
 CBAT RSS Feeds

Documentation

Documentation Overview
 Minor Body Astrometry
 MPC Status Page
 What's New

Lists and Plots

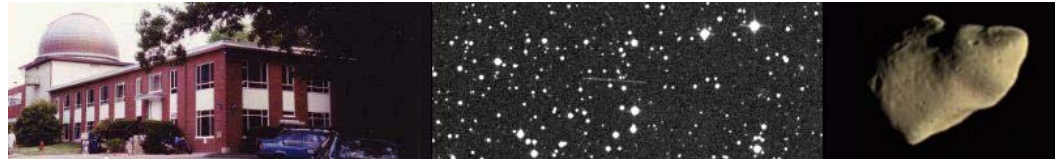
Lists and Plots Overview
 Minor Planets

Comets
 Animations

General Information

Astronomical Headlines
 Press Information Sheets

General



MPEC 2010-A37 : 2010 AN2

The following [Minor Planet Electronic Circular](#) may be linked-to from your own Web pages, but must **not** otherwise be [redistributed electronically](#).

[Read MPEC 2010-A36](#)[Read MPEC 2010-A38](#)

M.P.E.C. 2010-A37

Issued 2010 Jan. 8, 17:54 UT

The Minor Planet Electronic Circulars contain information on unusual minor planets and routine data on comets. They are published on behalf of Commission 20 of the International Astronomical Union by the Minor Planet Center, Smithsonian Astrophysical Observatory, Cambridge, MA 02138, U.S.A.

Prepared using the [Tamkin Foundation Computer Network](#)

MPC@CFA.HARVARD.EDU

URL <http://www.cfa.harvard.edu/iau/mpc.html> ISSN 1523-6714

2010 AN2

Observations:

K10A02N*	C2010	01	07.35347	07	16	54.15	+24	56	50.3	20.5	V	EA037G96
K10A02N	C2010	01	07.36054	07	16	53.07	+24	56	43.8	20.6	V	EA037G96
K10A02N	C2010	01	07.36763	07	16	51.96	+24	56	37.2	20.7	V	EA037G96
K10A02N	C2010	01	07.37476	07	16	50.88	+24	56	30.5	20.4	V	EA037G96
K10A02N	C2010	01	07.41295	07	16	45.00	+24	55	53.6	20.3	R	EA037H01
K10A02N	C2010	01	07.41749	07	16	44.37	+24	55	50.7	20.9	V	EA037291
K10A02N	C2010	01	07.41822	07	16	44.20	+24	55	48.6	20.1	R	EA037H01
K10A02N	C2010	01	07.42194	07	16	43.68	+24	55	46.2	21.0	V	EA037291
K10A02N	C2010	01	07.42524	07	16	43.15	+24	55	41.9	20.1	R	EA037H01
K10A02N	C2010	01	07.42656	07	16	43.00	+24	55	41.7	21.0	V	EA037291
K10A02N	C2010	01	07.43295	07	16	41.99	+24	55	34.5	20.3	R	EA037H01
K10A02N	C2010	01	08.18702	07	14	54.36	+24	43	47.9	20.6	V	EA037291
K10A02N	C2010	01	08.19117	07	14	53.69	+24	43	44.2	20.7	V	EA037291
K10A02N	C2010	01	08.19523	07	14	53.07	+24	43	40.4	20.6	V	EA037291
K10A02N]C2010	01	08.23301207	14	47.14	+24	43	05.1	20.9	V	EA037695	
K10A02N]C2010	01	08.23392407	14	47.05	+24	43	04.6	20.6	V	EA037695	
K10A02N]C2010	01	08.23461107	14	46.91	+24	43	03.8	20.6	V	EA037695	
K10A02N]C2010	01	08.23529507	14	46.82	+24	43	03.6	20.8	V	EA037695	
K10A02N	C2010	01	08.35383	07	14	27.92	+24	41	08.9	20.4	V	EA037G96
K10A02N	C2010	01	08.36888	07	14	25.51	+24	40	54.3	20.9	V	EA037G96
K10A02N	C2010	01	08.37385	07	14	24.75	+24	40	49.2	20.6	V	EA037G96

Observer details:

[291 LPL/Spacewatch II.](#) Observer R. S. McMillan. 1.8-m f/2.7 reflector + CCD.

[695 Kitt Peak.](#) Observers M. Trueblood, L. Lebofsky. Measurer R. Crawford. 2.1-m f/7.7 Ritchey-Chretien + CCD.

[G96 Mt. Lemmon Survey.](#) Observers E. Beshore, A. Boattini. Measurers J. D. Ahern, E. C. Beshore, A. Boattini, G. J. Garradd, A. R. Gibbs, A. D. Grauer, R. E. Hill, R. A. Kowalski, S. M. Larson, R. H. McNaught. 1.5-m reflector + CCD.

[H01 Magdalena Ridge Observatory, Socorro.](#) Observer W. H. Ryan. 2.4-m f/8.9 reflector + CCD.

Orbital elements:

2010 AN2		Earth MOID = 0.0692 AU	
Epoch	2010 Jan. 4.0 TT = JDT 2455200.5	MPC	Q
M	318.14623 (2000.0)	P	0
n	0.46577529	Peri.	270.59044
a	1.6482323	Node	291.49351
e	0.4852521	Incl.	8.44902
P	2.12	H	22.2
		G	0.15
		U	9

Residuals in seconds of arc

