

[Printer-friendly version](#)




# IAU Minor Planet Center

## MPC Operations Status

[Processing \(Info\)](#)

[ECS: Accessible](#)

## Observer Services (NEOs)

NEO Services Overview  
 NEO Confirmation  
 NEO Confirmation (RA order)  
 NEO Ratings  
 NEO Page  
 NEO Observation Planning Aid  
 NEOChecker  
 NEOCMTChecker

## Observer Services

Services Overview  
 IAUMail  
 Minor Planet & Comet Ephem.  
 Natural Satellite Ephemerides  
 New Object Ephemerides  
 MPChecker  
 CMTChecker  
 Distant Artificial Satellites  
 Observing List Customizer  
 Sky Coverage

## Orbital Elements

Orbital Elements Overview  
 MPCORB  
 Orbital Elements for Programs  
 MPCAT  
 MPCUPDATE

## Astrometric Observations

MPCAT-OBS  
 MPCOBS

## Publications

Publications Overview  
 MPECs  
 MPC Archive  
 MPC RSS Feeds  
 CBAT RSS Feeds

## Documentation

Documentation Overview  
 Minor Body Astrometry  
 MPC Status Page  
 What's New

## Lists and Plots

Lists and Plots Overview  
 Minor Planets

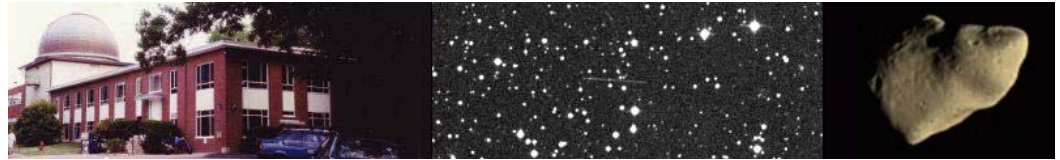
## Comets

Animations

## General Information

Astronomical Headlines  
 Press Information Sheets

## General



## MPEC 2010-A36 : 2010 AM2

The following [Minor Planet Electronic Circular](#) may be linked-to from your own Web pages, but must **not** otherwise be [redistributed electronically](#).



[Read MPEC 2010-A35](#)



[Read MPEC 2010-A37](#)

M.P.E.C. 2010-A36

Issued 2010 Jan. 8, 17:50 UT

The Minor Planet Electronic Circulars contain information on unusual minor planets and routine data on comets. They are published on behalf of Commission 20 of the International Astronomical Union by the Minor Planet Center, Smithsonian Astrophysical Observatory, Cambridge, MA 02138, U.S.A.

Prepared using the [Tamkin Foundation Computer Network](#)

MPC@CFA.HARVARD.EDU

URL <http://www.cfa.harvard.edu/iau/mpc.html> ISSN 1523-6714

## 2010 AM2

### Observations:

K10A02M*	C2010	01	07.32304	07	12	29.55	+30	07	00.1	20.6	V	EA036G9€
K10A02M	C2010	01	07.33020	07	12	28.04	+30	06	55.2	20.7	V	EA036G9€
K10A02M	C2010	01	07.33733	07	12	26.60	+30	06	50.2	20.6	V	EA036G9€
K10A02M	C2010	01	07.34458	07	12	25.12	+30	06	44.8	20.7	V	EA036G9€
K10A02M	C2010	01	07.38420	07	12	16.91	+30	06	14.0	20.2	R	EA036H01
K10A02M	C2010	01	07.39261	07	12	15.39	+30	06	10.4	20.9	V	EA036291
K10A02M	C2010	01	07.39328	07	12	15.08	+30	06	07.1	20.4	R	EA036H01
K10A02M	C2010	01	07.39750	07	12	14.37	+30	06	06.5	20.8	V	EA036291
K10A02M	C2010	01	07.40176	07	12	13.54	+30	06	03.2	20.9	V	EA036291
K10A02M	C2010	01	07.40326	07	12	13.09	+30	05	59.5	20.2	R	EA036H01
K10A02M	C2010	01	07.40974	07	12	11.80	+30	05	54.4	20.4	R	EA036H01
K10A02M	C2010	01	08.15311	07	10	05.87	+29	57	29.0	20.9	V	EA036291
K10A02M	C2010	01	08.15738	07	10	05.06	+29	57	26.3	21.2	V	EA036291
K10A02M	C2010	01	08.16168	07	10	04.27	+29	57	23.8	21.1	V	EA036291
K10A02M	]C2010	01	08.20883307	09	55.70	+29	56	57.0	20.5	V	EA03669€	
K10A02M	]C2010	01	08.21270907	09	54.98	+29	56	54.8	20.9	V	EA03669€	
K10A02M	]C2010	01	08.21339807	09	54.85	+29	56	54.3	20.5	V	EA03669€	
K10A02M	C2010	01	08.35582	07	09	28.25	+29	55	22.0	20.4	V	EA036G9€
K10A02M	C2010	01	08.36085	07	09	27.37	+29	55	19.1	20.3	V	EA036G9€
K10A02M	C2010	01	08.36584	07	09	26.41	+29	55	15.5	20.9	V	EA036G9€
K10A02M	C2010	01	08.37084	07	09	25.48	+29	55	12.1	20.9	V	EA036G9€

### Observer details:

[291 LPL/Spacewatch II.](#) Observer R. S. McMillan. 1.8-m f/2.7 reflector + CCD.  
[695 Kitt Peak.](#) Observers M. Trueblood, L. Lebofsky. Measurer R. Crawford.  
 2.1-m f/7.7 Ritchey-Chretien + CCD.

[G96 Mt. Lemmon Survey.](#) Observers E. Beshore, A. Boattini. Measurers J. D. Ahern, E. C. Beshore, A. Boattini, G. J. Garradd, A. R. Gibbs, A. D. Grauer, R. E. Hill, R. A. Kowalski, S. M. Larson, R. H. McNaught.  
 1.5-m reflector + CCD.

[H01 Magdalena Ridge Observatory, Socorro.](#) Observer W. H. Ryan. 2.4-m f/8.9 reflector + CCD.

### Orbital elements:

2010 AM2					Earth <a href="#">MOID</a> = 0.0153 AU		
Epoch	2010 Jan. 4.0 TT = JDT 2455200.5				MPC		
M	35.81039	(2000.0)	P	Q			
n	0.54484548	Peri.	323.32602	+0.98708902	-0.15934273		
a	1.4846377	Node	45.85133	+0.15182006	+0.89836538		
e	0.5252711	Incl.	1.30041	+0.05104846	+0.40932815		
P	1.81	H	23.6	G	0.15	U	9

Residuals in seconds of arc

Contact Us  
 Index  
 Site Map  
 Search Site  
 Tech Info  
 Documentation

**Links**  
 Minor Planet Center  
 Central Bureau for Astro. Tel.  
*International Comet Quarterly*  
 Smithsonian Astro. Obs.

**Translate**



Choose a language to translate this page!



Select to language



Select Language

Gadgets powered by Google

100107 G96	0.4+	0.3-	100107 291	0.4-	0.0	100108 695	0.4+	0.0
100107		0.2-	100107 291	0.1-	0.0	100108 695	0.4+	0.1+
100107		0.1-	100107 H01	0.2+	0.1+	100108 695	0.4+	0.0
100107 G96	0.2+	0.3-	100107 H01	0.2+	0.0	100108 G96	0.2-	0.7-
100107 H01	0.3+	0.0	100108 291	0.3+	0.3+	100108 G96	0.4+	0.1-
100107 291	0.1+	0.2+	100108 291	0.2-	0.0	100108 G96	0.1-	0.2-
100107 H01	0.1+	0.0	100108 291	0.4-	0.1-	100108 G96	0.2-	0.0

Ephemeris:  
 2010 AM2 a,e,i = 1.48, 0.53, 1 q = 0.7048

Date	TT	R. A. (2000)	Decl.	Delta	r	Elong.	Phase	V
2010 01 04		07 24.76	+30 48.9	0.143	1.125	170.0	8.7	20.2
2010 01 06		07 16.86	+30 22.9	0.160	1.142	171.9	7.0	20.4
2010 01 08		07 10.49	+29 59.4	0.177	1.159	172.2	6.6	20.7
2010 01 10		07 05.31	+29 38.1	0.195	1.176	171.3	7.3	20.9
2010 01 12		07 01.06	+29 18.8	0.213	1.194	169.5	8.6	21.2
2010 01 14		06 57.59	+29 01.2	0.232	1.211	167.5	10.2	21.5
2010 01 16		06 54.76	+28 44.9	0.251	1.228	165.2	11.8	21.8
2010 01 18		06 52.47	+28 29.9	0.270	1.245	163.0	13.4	22.0
2010 01 20		06 50.65	+28 16.0	0.290	1.261	160.8	14.9	22.2
2010 01 22		06 49.25	+28 02.9	0.310	1.278	158.6	16.3	22.5
2010 01 24		06 48.21	+27 50.6	0.331	1.295	156.5	17.7	22.7

Timothy B. Spahr (C) Copyright 2010 MPC M.P.E.C. 2010-A36

 [Read MPEC 2010-A35](#)  [Read MPEC 2010-A37](#)