

[Printer-friendly version](#)




# IAU Minor Planet Center

## MPC Operations Status

[Processing \(Info\)](#)

[ECS: Accessible](#)

## Observer Services (NEOs)

NEO Services Overview  
 NEO Confirmation  
 NEO Confirmation (RA order)  
 NEO Ratings  
 NEO Page  
 NEO Observation Planning Aid  
 NEOChecker  
 NEOCMTChecker

## Observer Services

Services Overview  
 IAUMail  
 Minor Planet & Comet Ephem.  
 Natural Satellite Ephemerides  
 New Object Ephemerides  
 MPChecker  
 CMTChecker  
 Distant Artificial Satellites  
 Observing List Customizer  
 Sky Coverage

## Orbital Elements

Orbital Elements Overview  
 MPCORB  
 Orbital Elements for Programs  
 MPCAT  
 MPCUPDATE

## Astrometric Observations

MPCAT-OBS  
 MPCOBS

## Publications

Publications Overview

## MPECs

MPC Archive  
 MPC RSS Feeds  
 CBAT RSS Feeds

## Documentation

Documentation Overview  
 Minor Body Astrometry  
 MPC Status Page

## What's New

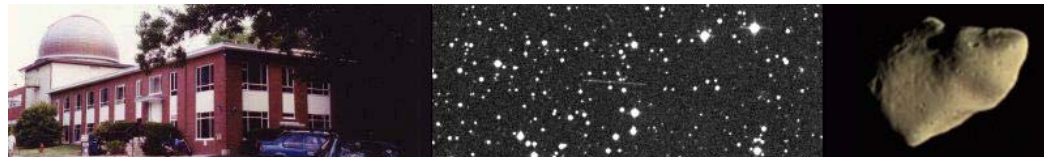
## Lists and Plots

Lists and Plots Overview  
 Minor Planets  
 Comets  
 Animations

## General Information

Astronomical Headlines  
 Press Information Sheets

## General



## MPEC 2010-A35 : 2010 AL2

The following [Minor Planet Electronic Circular](#) may be linked-to from your own Web pages, but must **not** otherwise be [redistributed electronically](#).



[Read MPEC 2010-A34](#)



[Read MPEC 2010-A36](#)

M.P.E.C. 2010-A35

Issued 2010 Jan. 8, 17:45 UT

The Minor Planet Electronic Circulars contain information on unusual minor planets and routine data on comets. They are published on behalf of Commission 20 of the International Astronomical Union by the Minor Planet Center, Smithsonian Astrophysical Observatory, Cambridge, MA 02138, U.S.A.

Prepared using the [Tamkin Foundation Computer Network](#)

MPC@CFA.HARVARD.EDU

URL <http://www.cfa.harvard.edu/iau/mpc.html> ISSN 1523-6714

## 2010 AL2

### Observations:

K10A02L*	C2010	01	07.27253	06	59	17.76	+24	22	13.2	19.6	EA035704
K10A02L	C2010	01	07.28523	06	59	31.45	+24	25	20.4	19.8	EA035704
K10A02L	C2010	01	07.29806	06	59	45.44	+24	28	29.3	19.2	EA035704
K10A02L	C2010	01	07.31080	06	59	59.29	+24	31	35.5	19.8	EA035704
K10A02L	C2010	01	08.23800	07	20	14.53	+28	27	12.5	19.6	V EA035G96
K10A02L	C2010	01	08.23942	07	20	16.40	+28	27	35.3	19.5	V EA035G96
K10A02L	C2010	01	08.24083	07	20	18.27	+28	27	57.6	19.6	V EA035G96
K10A02L	C2010	01	08.24228	07	20	20.22	+28	28	21.1	19.5	V EA035G96
K10A02L	]C2010	01	08.29771807	21	33.93	+28	43	05.7	18.9	C EA035695	
K10A02L	]C2010	01	08.29832107	21	34.72	+28	43	15.1	19.6	C EA035695	
K10A02L	]C2010	01	08.29892207	21	35.51	+28	43	24.7	20.2	C EA035695	
K10A02L	C2010	01	08.34556	07	22	37.48	+28	55	38.5	19.4	R EA035854
K10A02L	C2010	01	08.35217	07	22	46.37	+28	57	20.9	19.3	R EA035854
K10A02L	C2010	01	08.35549	07	22	50.90	+28	58	13.4	19.7	R EA035854

### Observer details:

[695 Kitt Peak.](#) Observers M. Trueblood, L. Lebofsky. Measurer R. Crawford. 2.1-m f/7.7 Ritchey-Chretien + CCD.

[704 Lincoln Laboratory ETS, New Mexico.](#) Observers M. Blythe, G. Spitz, R. Brungard, J. Paige, P. Festler. 1.0-m f/2.15 reflector + CCD.

[854 Sabino Canyon Observatory, Tucson.](#) Observer J. E. McGaha. 0.36-m f/10.0 Schmidt-Cassegrain + CCD.

[G96 Mt. Lemmon Survey.](#) Observer A. Boattini. Measurers J. D. Ahern, E. C. Beshore, A. Boattini, G. J. Garradd, A. R. Gibbs, A. D. Grauer, R. E. Hill, R. A. Kowalski, S. M. Larson, R. H. McNaught. 1.5-m reflector + CCD.

### Orbital elements:

2010 AL2		Earth MOID = 0.0285 AU	
Epoch	2010 Jan. 4.0 TT = JDT 2455200.5	MPC	
M	351.21679	(2000.0)	
n	0.42447000	Peri.	20.73280
a	1.7534957	Node	106.18409
e	0.4305151	Incl.	7.50636
P	2.32	H	26.5
G	0.15	U	7

### Residuals in seconds of arc

100107	704	0.3+	0.3-	100108	G96	0.1-	0.1+	100108	695	0.2-	0.2-
100107	704	0.6-	0.0	100108	G96	0.1-	0.1-	100108	854	0.4-	0.6+
100107	704	0.3+	0.4+	100108	G96	0.3+	0.1+	100108	854	0.2-	0.4-
100107	704	0.0	0.1-	100108	695	0.0	0.1-	100108	854	0.7+	0.2+
100108	G96	0.1+	0.1+	100108	695	0.1-	0.3-				

- Contact Us
- Index
- Site Map
- Search Site
- Tech Info
- Documentation
- Links**
- Minor Planet Center
- Central Bureau for Astro. Tel.
- International Comet Quarterly*
- Smithsonian Astro. Obs.

Ephemeris:

Date	A. (2000)	Decl.	Delta	r	Elong.	Phase	V
2010 01 04	06 11.24	+13 15.0	0.0434	1.025	165.4	14.0	20.5
2010 01 06	06 37.07	+19 31.2	0.0375	1.020	172.4	7.3	19.9
2010 01 08	07 14.59	+27 25.7	0.0329	1.016	174.9	5.0	19.5
2010 01 10	08 09.42	+36 14.7	0.0301	1.012	162.7	16.8	19.8
2010 01 12	09 24.58	+43 43.2	0.0296	1.009	148.1	31.0	20.2
2010 01 14	10 50.11	+47 19.8	0.0315	1.006	134.2	44.5	20.7
2010 01 16	12 05.27	+47 02.4	0.0353	1.003	123.0	55.4	21.3
2010 01 18	13 00.13	+44 46.8	0.0404	1.001	114.6	63.3	21.8
2010 01 20	13 37.74	+42 04.3	0.0465	1.000	108.7	68.7	22.3
2010 01 22	14 03.75	+39 32.7	0.0530	0.999	104.7	72.4	22.7
2010 01 24	14 22.29	+37 21.9	0.0600	0.998	101.9	74.7	23.0

Timothy B. Spahr

(C) Copyright 2010 MPC

M.P.E.C. 2010-A35

Translate



Choose a language to translate this page!



Select to language



Select Language

Gadgets powered by Google



[Read MPEC 2010-A34](#)



[Read MPEC 2010-A36](#)