

[Printer-friendly version](#)

Search MPC/CBAT

IAU Minor Planet Center

MPC Operations Status

[Processing \(Info\)](#)[ECS: Accessible](#)

Observer Services (NEOs)

NEO Services Overview
 NEO Confirmation
 NEO Confirmation (RA order)
 NEO Ratings
 NEO Page
 NEO Observation Planning Aid
 NEOChecker
 NEOCMTChecker

Observer Services

Services Overview
 IAUMail
 Minor Planet & Comet Ephem.
 Natural Satellite Ephemerides
 New Object Ephemerides
 MPChecker
 CMTChecker
 Distant Artificial Satellites
 Observing List Customizer
 Sky Coverage

Orbital Elements

Orbital Elements Overview
 MPCORB
 Orbital Elements for Programs
 MPCAT
 MPCUPDATE

Astrometric Observations

MPCAT-OBS
 MPCOBS

Publications

Publications Overview
 MPECs
 MPC Archive
 MPC RSS Feeds
 CBAT RSS Feeds

Documentation

Documentation Overview
 Minor Body Astrometry
 MPC Status Page
 What's New

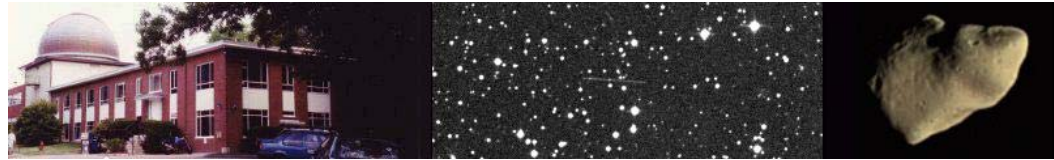
Lists and Plots

Lists and Plots Overview
 Minor Planets
 Comets
 Animations

General Information

Astronomical Headlines
 Press Information Sheets

General



MPEC 2010-A34 : 2010 AK2

The following [Minor Planet Electronic Circular](#) may be linked-to from your own Web pages, but must not otherwise be [redistributed electronically](#).

[Read MPEC 2010-A33](#)[Read MPEC 2010-A35](#)

M.P.E.C. 2010-A34

Issued 2010 Jan. 8, 17:41 UT

The Minor Planet Electronic Circulars contain information on unusual minor planets and routine data on comets. They are published on behalf of Commission 20 of the International Astronomical Union by the Minor Planet Center, Smithsonian Astrophysical Observatory, Cambridge, MA 02138, U.S.A.

Prepared using the [Tamkin Foundation Computer Network](#)

MPC@CFA.HARVARD.EDU

URL <http://www.cfa.harvard.edu/iau/mpc.html> ISSN 1523-6714

2010 AK2

Observations:

K10A02K*	C2010	01	06.36927	07	30	41.50	+28	16	56.4	20.8	V	EA034G96
K10A02K	C2010	01	06.37646	07	30	40.32	+28	16	51.7	21.1	V	EA034G96
K10A02K	C2010	01	06.38366	07	30	39.09	+28	16	47.1	21.2	V	EA034G96
K10A02K	C2010	01	06.39082	07	30	37.90	+28	16	42.5	21.1	V	EA034G96
K10A02K	C2010	01	06.42077	07	30	32.84	+28	16	22.7			EA034291
K10A02K	HC2010	01	06.42497	07	30	32.22	+28	16	20.8			EA034291
K10A02K	KC2010	01	06.91674	07	29	11.03	+28	10	55.2			EA034J95
K10A02K	KC2010	01	06.93578	07	29	07.91	+28	10	40.7	21.0	R	EA034J95
K10A02K	C2010	01	07.17864	07	28	27.51	+28	07	59.7	21.0	V	EA034291
K10A02K	C2010	01	07.18316	07	28	26.75	+28	07	56.7	21.1	V	EA034291
K10A02K	C2010	01	07.18774	07	28	25.95	+28	07	53.4	21.2	V	EA034291
K10A02K	C2010	01	07.20612	07	28	22.85	+28	07	41.3	20.6	R	EA034H01
K10A02K	C2010	01	07.21252	07	28	21.76	+28	07	37.1	20.5	R	EA034H01
K10A02K	C2010	01	07.22011	07	28	20.46	+28	07	32.0	20.7	R	EA034H01
K10A02K	C2010	01	07.23327	07	28	18.24	+28	07	23.3	20.2	R	EA034H01
K10A02K	C2010	01	08.16800	07	25	40.75	+27	56	37.9	21.1	V	EA034291
K10A02K	C2010	01	08.17228	07	25	40.02	+27	56	35.0	21.1	V	EA034291
K10A02K	C2010	01	08.17790	07	25	39.07	+27	56	31.2	21.3	V	EA034291
K10A02K	JC2010	01	08.22789107	25	30.51	+27	55	56.4		20.7	V	EA034695
K10A02K	JC2010	01	08.22856907	25	30.40	+27	55	56.0		20.5	V	EA034695
K10A02K	JC2010	01	08.22925607	25	30.28	+27	55	55.6		20.6	V	EA034695

Observer details:

[291 LPL/Spacewatch II](#). Observer R. S. McMillan. 1.8-m f/2.7 reflector + CCD.
[695 Kitt Peak](#). Observers M. Trueblood, L. Lebofsky. Measurer R. Crawford.
 2.1-m f/7.7 Ritchey-Chretien + CCD.
[G96 Mt. Lemmon Survey](#). Observer E. Beshore. Measurers J. D. Ahern,
 E. C. Beshore, A. Boattini, G. J. Garradd, A. R. Gibbs, A. D. Grauer,
 R. E. Hill, R. A. Kowalski, S. M. Larson, R. H. McNaught. 1.5-m reflector
 + CCD.
[H01 Magdalena Ridge Observatory, Socorro](#). Observer W. H. Ryan. 2.4-m f/8.9
 reflector + CCD.
[J95 Great Shefford](#). Observer P. Birtwhistle. 0.40-m f/6.0 Schmidt-Cassegrain
 + CCD.

Orbital elements:

2010 AK2										Earth MOID = 0.2541 AU
Epoch 2010 Jan. 4.0	TT =	JDT 2455200.5								MPC
M 321.23668		(2000.0)		P		Q				
n	0.25056330	Peri.	308.07271	-0.23650740		+0.63841598				
a	2.4918644	Node	290.89979	-0.44296636		-0.74178809				
e	0.7545344	Incl.	51.63194	-0.86478035		+0.20536667				

- Contact Us
- Index
- Site Map
- Search Site
- Tech Info
- Documentation
- Links**
- Minor Planet Center
- Central Bureau for Astro. Tel.
- International Comet Quarterly*
- Smithsonian Astro. Obs.

Translate



Choose a language to translate this page!



Select to language



Select Language

Gadgets powered by Google

P 3.93 H 18.5 G 0.15
 From 2010 Jan. 6-8. E-assumed.



Ephemeris:

2010 AK2 a,e,i = 2.49, 0.75, 52 $q = 0.6117$

Date	TT	R.	A. (2000)	Decl.	Delta	r	Elong.	Phase	V
2010 01 04		07	37.09	+28 41.4	1.241	2.215	169.4	4.7	21.1
2010 01 14		07	08.62	+26 39.9	1.145	2.122	170.8	4.3	20.8
2010 01 24		06	38.38	+23 49.7	1.090	2.025	155.0	11.8	20.9
2010 02 03		06	10.25	+20 23.7	1.074	1.926	138.4	19.9	21.1
2010 02 13		05	47.19	+16 45.8	1.089	1.822	122.6	27.1	21.2
2010 02 23		05	30.49	+13 17.1	1.125	1.715	108.3	33.2	21.3
2010 03 05		05	19.93	+10 07.4	1.169	1.605	95.6	38.0	21.4
2010 03 15		05	14.63	+07 16.8	1.212	1.490	84.4	41.6	21.4
2010 03 25		05	13.58	+04 39.7	1.245	1.372	74.6	44.5	21.4
2010 04 04		05	15.75	+02 08.4	1.261	1.251	66.0	46.9	21.3

Timothy B. Spahr

(C) Copyright 2010 MPC

M.P.E.C. 2010-A34



[Read MPEC 2010-A33](#)



[Read MPEC 2010-A35](#)