

[Printer-friendly version](#)


IAU Minor Planet Center

MPC Operations Status

[Processing \(Info\)](#)

[ECS: Accessible](#)

Observer Services (NEOs)

NEO Services Overview

NEO Confirmation

NEO Confirmation (RA order)

NEO Ratings

NEO Page

NEO Observation Planning Aid

NEOChecker

NEOCMTChecker

Observer Services

Services Overview

IAUMail

Minor Planet & Comet Ephems.

Natural Satellites Ephemerides

New Object Ephemerides

MPChecker

CMTChecker

Distant Artificial Satellites

Observing List Customizer

Sky Coverage

Orbital Elements

MPCORB

Orbital Elements for Programs

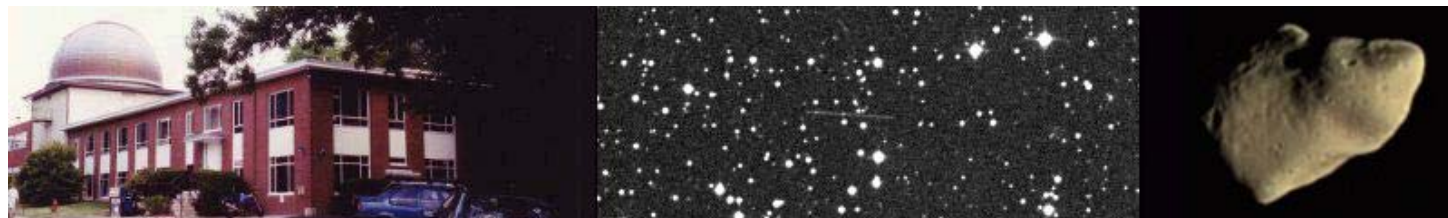
MPCAT

MPCUPDATE

Astrometric Observations

MPCAT-OBS

MPCOBS



MPEC 2009-T15 : DAILY ORBIT UPDATE (2009 OCT. 6 UT)

The following [Minor Planet Electronic Circular](#) may be linked-to from your own Web pages, but must **not** otherwise be [redistributed electronically](#).



[Read MPEC 2009-T14](#)



[Read MPEC 2009-T16](#)

M.P.E.C. 2009-T15

Issued 2009 Oct. 6, 06:07 UT

The Minor Planet Electronic Circulars contain information on unusual minor planets and routine data on comets. They are published on behalf of Commission 20 of the International Astronomical Union by the Minor Planet Center, Smithsonian Astrophysical Observatory, Cambridge, MA 02138, U.S.A.

Prepared using the [Tamkin Foundation Computer Network](#)

MPC@CFA.HARVARD.EDU

URL <http://www.cfa.harvard.edu/iau/mpc.html> ISSN 1523-6714

DAILY ORBIT UPDATE (2009 OCT. 6 UT)

Update to [MPEC 2009-T14](#)

Full-precision elements for the objects listed here are available at <ftp://cfa-ftp.harvard.edu/pub/MPCORB/>

New identification:

J97C12T K09ST4M

J98R81G K07EH4C K09SV1J

J98S32Z K09SV2B

MPC

MPC

MPC

Publications

Publications Overview

MPECs

MPC Archive

MPC RSS Feeds

CBAT RSS Feeds

Documentation

Documentation Overview

Minor Body Astrometry

MPC Status Page

What's New

Lists and Plots

Lists and Plots Overview

Minor Planets

Comets

Animations

General Information

Astronomical Headlines

Press Information Sheets

General

Contact Us

Index

Site Map

Search Site

Tech Info

Documentation

Links

Minor Planet Center

Central Bureau for Astro. Tel.

International Comet Quarterly

Smithsonian Astro. Obs.

Translate



Choose a language to translate this page!



TOPICS

HTML 4.01

J99U30T

K00B39V

K00S63N

K00SD0H

K00SD8W

K00SK7K

K00T07U

K00T14V

K01TA3H

K01TQ0Y

K02CR3N

K02GC0N

K02GG2U

K02GI4U

K02PH7X

K02PJ0L

K02Q88V

K02QA5F

K02QC7N

K02R33A

K02RJ8U

K02RO0Y

K02RR9A

K02RS0N

K02S44P

K02T55Y

K02TV0A

K02Ta3F

K02U01V

K02V51N

K02X24R

K03D01W

K03E31E

K03E63R

K03F90L

K03G27A

K03G57F

K03Q75H

K03SB40

K03SQ0J

K03Sb9L

K03UF70

K04C54A

K04F55K

K04O08W

K04P47A

K04R83H

K04RX6F

K04S46W

K04T120

K04T45F

K04TA5N

K09R67O

K09SX1P

K09SS1H

K09S29B

K09R49H

K09R06F

K09SP5T

K09ST8E

K09R59U

K09SF5Z

K09SP5Y

K09SB0H

K03F08D

K09SR5X

K09SW4K

K09SS2B

K04VC9M

K09SV9W

K09SU8G

K09SU3J

K09SQ5H

K09SP9L

K09SQ7E

K09SR8J

K09R68P

K09SR3E

K09SW9U

K09SR5A

K09SQ5T

K09ST7C

K09SS2S

K09SQ9C

K09SS1X

K09R15G

K09SS2M

K09SV2K

K09SV7T

K09SS7P

K09R66Q

K09SQ9Q

K09SN5F

K09S31A

K09ST3Q

K09SI6A

K09SW6R

K09R68M

K09SQ7K

K09SP8W

K09SQ9T

K09ST5D

K09SU0V

K09SW9V

K09SR2K

K09SR6L

K09SV1G

K07F10M K09S61J

MPC

MPC

MPC

MPC

MPC

MPC

MPC

MPC

MPC

MPC

MPC

MPC

MPC

MPC

MPC

MPC

MPC

MPC

MPC

MPC

MPC

MPC

MPC

MPC

MPC

MPC

MPC

MPC

MPC

MPC

MPC

MPC

MPC

MPC

MPC

MPC

MPC

MPC

MPC

MPC

MPC

MPC

MPC

MPC

MPC

MPC

MPC

MPC

MPC

MPC

MPC

MPC

MPC

MPC

MPC

MPC

MPC

MPC

MPC

MPC

MPC

MPC

MPC

MPC

MPC

MPC

MPC

MPC

MPC

MPC

MPC

MPC

MPC



K04TG7W	K09SQ6U	MPC
K04TJ8E	K09R66O	MPC
K04TK6B	K09SX3G	MPC
K04TN6H	K09SU6A	MPC
K04TS3J	K09SX0P	MPC
K04V01B	K09SR9J	MPC
K04V19O	K09SX2W	MPC
K04V64P	K09SP5V	MPC
K04X00V	K09SX2X	MPC
K04X02T	K09SR6H	MPC
K04XD0Q	K09SV8C	MPC
K05JC0V	K09SR1U	MPC
K05N70F	K09SP8K	MPC
K05O17X	K09SU4K	MPC
K05Q31B	K09ST1M	MPC
K05S31V	K09SQ4A	MPC
K05S44O	K09SV4T	MPC
K05S60S	K09SV8F	MPC
K05SN7M	K09SU5B	MPC
K05T15Z	K09SV4Z	MPC
K05U40C	K09SU5F	MPC
K05U58H	K09SP9O	MPC
K05U79F	K09SS7E	MPC
K05U98E	K09SQ7Y	MPC
K05UF8H	K09SR1D	MPC
K05UN4L	K09SQ9V	MPC
K05UN9X	K09T00E	MPC
K05V06M	K09ST0E	MPC
K05VD6C	K09ST5T	MPC
K05WH5C	K09SQ0L	MPC
K05Y04Z	K09ST8S	MPC
K05Y26O	K09SS3P	MPC
K05Y35O	K09SS6W	MPC
K05Y85D	K09SR8W	MPC
K06A35M	K09SV4S	MPC
K06A39V	K09SV0Y	MPC
K06B08G	K09SS2H	MPC
K06B59G	K09SV1L	MPC
K06BQ3W	K09SX0N	MPC
K06BR8M	K09SV0Q	MPC
K06D00B	K09SU3X	MPC
K06D20T	K09SV6M	MPC
K06D25G	K09SQ5U	MPC
K06DI9M	K09Q41Q	MPC
K06DJ9Z	K09ST9B	MPC
K06V14V	K09SQ1O	MPC
K06V87B	K09R67T	MPC
K06X29S	K09SS0N	MPC
K06X51D	K09SW8X	MPC
K07B10R	K09SX0O	MPC
K07C32G	K09SE1B	MPC
K07C52O	K09ST8X	MPC
K07D34H	K09SQ6X	MPC
K07D49F	K09S18O	MPC
K07D78W	K09SV0D	MPC

K07D78W	K09SV0D		MPC
K07D82U	K09SV2E		MPC
K07DB3V	K09SQ2N		MPC
K07E29N	K09SL5A		MPC
K07E32X	K09SF6B		MPC
K07E35M	K09SR5L		MPC
K07E43X	K09SU2Z		MPC
K07E46H	K09SV4U		MPC
K07E55A	K09S68D		MPC
K07E66E	K09SR7W		MPC
K07EE5L	K09S48C		MPC
K07EF0N	K09SS3G		MPC
K07EH2A	K09P16E		MPC
K07EH4G	K09SU9Y		MPC
K07F19Z	K09SV4K		MPC
K07G25U	K09SU9V		MPC
K07G73C	K09ST5V		MPC
K07H60K	K09SW9Z		MPC
K08F25B	K09ST2F		MPC
K08F46S	K09S92W		MPC
K08F48Z	K09ST4F		MPC
K09O05L	K04TJ4N		MPC
K09P07S	K07E59S		MPC
K09P12X	J99TR4X		MPC
K09P15S	K07H37O		MPC
K09Q04J	J98B23K		MPC
K09Q22T	K06Y16X		MPC
K09Q23O	K05SP0O		MPC
K09Q26J	J98X08B		MPC
K09Q31C	K05Y50F		MPC
K09Q32W	J98S35A		MPC
K09Q37C	K07EJ7M		MPC
K09Q46U	K06X14L		MPC
K09Q46V	K05UR9M	K08F95P	MPC
K09R00B	K01X42O		MPC
K09R04E	J95S56V		MPC
K09R07K	K08H39Z		MPC
K09R08X	K06BH4W		MPC
K09R11T	K04XI9X		MPC
K09R12L	K06C30P		MPC
K09R12T	K07G15F		MPC
K09R14H	K00T03Z		MPC
K09R14Y	K03SZ3B		MPC
K09R17G	K04TN0Y		MPC
K09R17W	J99G11T		MPC
K09R20C	K05X40Y		MPC
K09R20D	J98U42T		MPC
K09R25B	K04EA6Q	K08G59G	MPC
K09R27H	K02X17A		MPC
K09R30M	J93R15D		MPC
K09R37M	K06BB4F		MPC
K09R42M	K06Y04G		MPC
K09R46G	K05Y06T		MPC
K09R60D	K08K38D		MPC
K09R60V	K06B14D		MPC

K09R61M	K05Q69Q		MPC
K09R62Y	J97T22J	K08SD3R	MPC
K09R63F	K07EH3B		MPC
K09R63N	K05UV2U		MPC
K09R65N	K05SM2H		MPC
K09R65Q	K04XH2K		MPC
K09R67T	J96V10R	K06V87B	MPC
K09S05X	K04TZ4D		MPC
K09S14Q	K05YQ3P		MPC
K09S14W	K06BD6P		MPC
K09S15S	K05UI0A		MPC
K09S18N	K07C00L		MPC
K09S25N	K01E26H	K06C53K	MPC
K09S25Q	J99XO6R		MPC
K09S29H	K05WK0G		MPC
K09S30K	K06W75J		MPC
K09S32V	K03UW9C		MPC
K09S33V	K04P28F		MPC
K09S34A	K07F26C		MPC
K09S35C	K03U39N		MPC
K09S36F	K06X33N		MPC
K09S36Q	K03SY1O	K06DH4V	MPC
K09S38D	K05QE2J		MPC
K09S38X	K05V12S		MPC
K09S44F	K06B97O		MPC
K09S46H	K01YE3L		MPC
K09S46Q	J99CE3H		MPC
K09S52F	K05W10N		MPC
K09S58F	K06X36L		MPC
K09S59L	K00CE4M		MPC
K09S61F	K07P03X		MPC
K09S65Z	K01D55Z		MPC
K09S66F	K07EL0V		MPC
K09S66M	K03SK6X		MPC
K09S69R	K05V08A		MPC
K09S71E	K05Uh0Z		MPC
K09S71P	K05V85T		MPC
K09S74D	K08G84J		MPC
K09S75O	K08R65W		MPC
K09S78Z	K04TT0H		MPC
K09S79H	K04N27F		MPC
K09S95V	K05XA6J		MPC
K09S96C	K05W71O		MPC
K09SA1X	J98T16U		MPC
K09SA7L	K06A16V		MPC
K09SA9T	K02CI6G	K07D88Q	MPC
K09SB0L	J98SB4G		MPC
K09SB3Q	K04V30X		MPC
K09SB4B	K04V49V	K07EK7Z	MPC
K09SB4Q	K05O08C		MPC
K09SB4R	K07B22G		MPC
K09SB5G	K04V32Y		MPC
K09SD1H	K05YP3G		MPC
K09SD4M	K02W23R		MPC
K09SD5R	K07EI7F		MPC

K09SD9C	K07G54N		MPC
K09SE5E	K07E35A		MPC
K09SE5F	K05Q98N		MPC
K09SE7X	K05T96J		MPC
K09SF0N	K08GB5Q		MPC
K09SF3S	J95U16S		MPC
K09SF3W	K05O17K		MPC
K09SF5R	K06G35Z		MPC
K09SF5X	K00SF9L		MPC
K09SF6J	K05Ug1J		MPC
K09SF6K	K05QB5V		MPC
K09SF6M	K04FF6F		MPC
K09SF7A	K07C47T		MPC
K09SF7E	K02RM0S		MPC
K09SG0K	K05YK7C		MPC
K09SG0N	K05X39R		MPC
K09SH0N	K07C10F		MPC
K09SH2G	K03Ub3D	K06AA3E	MPC
K09SH2R	K06UG3N		MPC
K09SH3F	K07D11J		MPC
K09SH9D	K06B59Y		MPC
K09SI0V	K03SZ1E	K07H29P	MPC
K09SI1C	K06VE3A		MPC
K09SI1Q	K05ET6J		MPC
K09SI3P	K03H06E		MPC
K09SI4G	K03F23R		MPC
K09SI5K	K05Ui6W		MPC
K09SI6Q	K07L22N		MPC
K09SI8C	J98S04Q		MPC
K09SI8T	K05Ua6F		MPC
K09SJ0R	K07B90O		MPC
K09SJ6K	K06X23J		MPC
K09SK0N	K05S44Y		MPC
K09SK5T	K05N20Y		MPC
K09SK6L	K07E50U		MPC
K09SN2N	K04G51D		MPC
K09SN3P	K08G65H		MPC
K09SN4M	K06D65E		MPC
K09SP2A	J96U03L		MPC
K09SP5A	K05UD1L		MPC
K09SP5J	K08M02C		MPC
K09SP5R	K02S13C		MPC
K09SU5L	K06B12C		MPC
K09SU5X	K08H10M		MPC
K09SV2Q	K04TY9L		MPC
K09SV5F	K08R52X		MPC
K09SV8T	K06E29B		MPC
K09SV9J	K04RR1P		MPC
K09SV9R	J97S22M		MPC
K09SW5S	K08K35X		MPC
K09SX0E	K07EE2X		MPC

Erroneous double designation:
K06K63L K06J79R

MPO104420

New double designation:

K05VD6C	K05YR7Q	MPC
K07E43X	K07F41J	MPC
K09R60V	K09SW6S	MPC
K09SF4U	K09Q15V	MPC

New multiple-opposition orbits:

Object	H	G	Epoch	M	Peri.	Node	Incl.	e	a	Opp	C
J97C12T	17.0	0.15	K1014	291.608	328.683	141.716	8.991	0.17772	2.81182	2	X
J97S32U	13.4	0.15	K1014	281.295	94.144	29.235	20.910	0.08496	5.29260	3	X
J98R65Q	14.7	0.15	K1014	162.280	131.063	216.090	1.764	0.36285	3.96760	4	X
J98R81G	16.5	0.15	K1014	26.098	351.578	358.363	9.648	0.03955	3.11753	3	X
J98S32Z	16.7	0.15	K1014	49.314	148.134	174.269	9.704	0.08487	3.11434	3	X
J98T25S	13.4	0.15	K1014	265.728	264.649	224.245	14.002	0.08939	5.18482	5	X
J98U09J	15.7	0.15	K1014	355.909	14.483	11.436	10.352	0.04067	3.12389	4	X
J99TC8X	17.4	0.15	K1014	344.637	169.684	195.628	6.624	0.23372	2.28975	3	X
J99TM1E	16.6	0.15	K1014	9.622	107.715	222.258	5.632	0.15426	2.30881	6	X
J99U18E	17.5	0.15	K1014	45.342	305.645	31.689	11.827	0.16987	2.92268	3	X
J99U30T	18.1	0.15	K1014	311.468	276.758	189.489	6.011	0.13962	2.23333	2	X
J99V05R	19.0	0.15	K1014	41.487	114.056	241.609	4.685	0.39132	2.22227	2	X
K00B39V	16.3	0.15	K1014	343.376	126.361	295.497	0.793	0.10311	3.11605	5	X
K00CA1O	19.0	0.15	K1014	39.360	64.834	353.107	15.322	0.09018	1.07622	2	X
K00S63N	15.8	0.15	K1014	36.110	321.019	27.097	8.582	0.16345	2.72844	7	X
K00SD0H	15.5	0.15	K1014	58.219	58.743	251.130	13.461	0.12386	2.72103	2	X
K00SD8W	16.2	0.15	K1014	72.783	315.672	356.903	8.564	0.25543	2.69059	3	X
K00SH8R	16.9	0.15	K1014	54.934	119.046	218.470	11.264	0.40560	2.69216	2	X
K00SK7K	16.1	0.15	K1014	3.828	18.221	19.444	14.529	0.20086	2.73147	2	X
K00T07U	16.7	0.15	K1014	353.064	232.917	183.599	3.820	0.20373	2.71940	4	X
K00T14V	17.0	0.15	K1014	5.417	154.435	230.739	1.647	0.18741	2.75828	3	X
K01S41G	17.8	0.15	K1014	356.364	226.753	181.346	21.884	0.09721	1.92519	2	X
K01TA3H	17.7	0.15	K1014	212.689	179.801	16.446	19.928	0.03454	1.92628	3	X
K01TQ0Y	17.4	0.15	K1014	141.568	248.484	23.163	20.366	0.06205	1.89685	5	X
K02AC6K	16.4	0.15	K1014	16.749	81.141	291.916	4.006	0.07839	2.69899	3	X
K02C96R	16.4	0.15	K1014	327.137	314.122	146.831	12.273	0.15149	2.68079	3	X
K02CR3N	17.0	0.15	K1014	333.645	297.602	142.158	2.665	0.17923	2.69973	4	X
K02E55R	16.2	0.15	K1014	284.319	317.837	179.389	5.121	0.18693	2.70485	2	X
K02EF7J	16.5	0.15	K1014	307.864	133.983	337.935	13.278	0.14946	2.72183	3	X
K02GC0N	15.8	0.15	K1014	76.844	261.626	23.564	15.787	0.22223	3.15465	2	X
K02GC1U	15.6	0.15	K1014	133.865	10.976	205.152	10.821	0.22458	3.11286	2	X
K02GG2U	15.6	0.15	K1014	95.422	242.801	29.564	17.866	0.21903	3.11315	2	X
K02GI4U	15.8	0.15	K1014	74.872	98.024	224.860	8.831	0.01703	2.98906	6	X
K02JC7B	14.6	0.15	K1014	115.831	50.865	206.594	21.835	0.19090	3.13398	2	X
K02PH7X	18.0	0.15	K1014	75.935	323.470	356.953	6.184	0.12864	2.23213	3	X
K02PI7R	17.3	0.15	K1014	49.287	29.169	319.743	7.413	0.20465	2.24355	3	X
K02PJ0L	19.0	0.15	K1014	70.343	316.502	345.710	5.691	0.20729	2.27511	2	X
K02Q03R	18.6	0.15	K1014	46.506	43.457	286.856	5.031	0.27840	2.28915	2	X
K02Q88V	18.5	0.15	K1014	13.718	98.528	282.269	0.620	0.15262	2.28182	2	X
K02QA5F	18.0	0.15	K1014	27.281	44.555	339.598	2.622	0.19157	2.25418	3	X
K02QC7N	18.6	0.15	K1014	91.470	245.162	29.690	3.249	0.20974	2.27438	3	X
K02R33A	17.6	0.15	K1014	50.426	74.200	276.818	1.714	0.18860	2.27240	4	X
K02R39U	16.8	0.15	K1014	351.056	67.794	251.081	4.265	0.20162	2.42559	5	X
K02RC4Z	17.1	0.15	K1014	57.461	76.158	251.169	5.700	0.12917	2.30220	5	X
K02RD8Q	17.8	0.15	K1014	9.134	20.884	3.420	29.257	0.21526	2.30395	2	X
K02RJ8U	18.1	0.15	K1014	57.185	168.061	161.905	5.471	0.17394	2.28520	3	X
K02RO0Y	18.7	0.15	K1014	35.266	176.259	191.879	5.936	0.18642	2.26752	2	X

K02RR9A	18.9	0.15	K1014	51.650	37.655	283.299	4.063	0.26533	2.29719	2 X
K02RS0N	17.5	0.15	K1014	347.960	206.983	202.189	5.402	0.14822	2.30017	2 X
K02S26J	16.4	0.15	K1014	43.889	324.634	33.786	8.492	0.23874	2.28685	3 X
K02S44P	16.7	0.15	K1014	68.494	286.669	24.720	6.358	0.20452	2.31174	5 X
K02T48G	16.5	0.15	K1014	250.801	216.388	208.602	9.612	0.18558	2.57343	4 X
K02T55Y	17.0	0.15	K1014	76.573	107.420	215.880	6.721	0.13944	2.28398	4 X
K02TV0A	17.3	0.15	K1014	290.052	322.795	142.559	7.719	0.05712	2.34052	5 X
K02Ta3F	18.4	0.15	K1014	63.553	284.831	41.014	6.955	0.15081	2.29947	3 X
K02U01V	18.3	0.15	K1014	347.956	53.346	17.123	4.478	0.22142	2.33389	3 X
K02V03L	17.3	0.15	K1014	286.018	42.013	334.730	3.670	0.26338	2.56002	2 X
K02V51N	17.7	0.15	K1014	9.716	269.209	130.707	3.069	0.21256	2.32478	3 X
K02W25O	17.9	0.15	K1014	36.023	173.030	176.598	2.753	0.19113	2.36530	2 X
K02X24R	17.8	0.15	K1014	358.904	23.932	28.025	1.775	0.16514	2.36540	5 X
K03B06N	17.4	0.15	K1014	319.622	339.738	133.550	11.056	0.16835	2.38830	4 X
K03D01W	16.7	0.15	K1014	263.941	27.466	116.751	4.460	0.09554	2.53232	3 X
K03E31E	16.9	0.15	K1014	229.617	343.402	174.598	13.646	0.10499	2.61445	4 X
K03E63R	13.1	0.15	K1014	259.145	86.870	56.092	7.004	0.02654	5.26885	4 X
K03F90L	16.6	0.15	K1014	207.208	331.688	223.039	11.073	0.12611	2.63252	2 X
K03FD3B	13.2	0.15	K1014	256.356	291.640	198.734	12.591	0.06886	5.25468	5 X
K03FD3L	13.2	0.15	K1014	244.163	321.699	192.576	11.221	0.04072	5.16962	3 X
K03G27A	17.2	0.15	K1014	162.234	10.305	199.407	13.415	0.13219	2.75764	3 X
K03G53C	18.2	0.15	K1014	81.618	295.925	26.306	21.791	0.06714	1.89673	2 X
K03G57F	13.3	0.15	K1014	229.081	137.486	25.309	12.914	0.06239	5.22743	2 X
K03Q75H	15.5	0.15	K1014	11.722	214.198	181.490	14.971	0.26900	3.18935	3 X
K03R09M	16.0	0.15	K1014	25.194	182.896	203.825	12.579	0.29623	3.16560	2 X
K03SB4O	16.3	0.15	K1014	40.366	172.980	174.695	6.888	0.11041	3.17121	5 X
K03SQ0J	15.7	0.15	K1014	20.138	154.101	223.888	3.980	0.12898	3.15537	6 X
K03Sb9L	17.1	0.15	K1014	341.382	259.503	172.162	5.648	0.16368	3.20471	2 X
K03UF7O	15.2	0.15	K1014	130.678	207.838	91.902	5.390	0.07919	3.08773	4 X
K04C54A	19.1	0.15	K1014	336.383	86.432	0.126	2.111	0.15321	2.20837	3 X
K04D57D	17.9	0.15	K1014	192.929	184.861	223.596	2.729	0.09154	2.76217	3 X
K04F55K	16.9	0.15	K1014	135.704	262.175	6.686	4.958	0.10744	2.34598	6 X
K04G10C	16.9	0.15	K1014	183.250	185.288	27.584	9.829	0.14980	2.41939	2 X
K04H25N	17.0	0.15	K1014	199.169	118.509	77.613	2.215	0.13034	2.42065	2 X
K04H40Y	13.4	0.15	K1014	33.081	334.360	19.740	23.195	0.07155	5.13862	5 X
K04O08W	16.7	0.15	K1014	89.941	5.913	278.754	4.098	0.13860	2.72190	3 X
K04P47A	16.7	0.15	K1014	83.504	255.994	38.510	3.734	0.17707	2.73666	3 X
K04R31D	16.1	0.15	K1014	52.116	319.475	11.835	5.462	0.15474	2.78782	2 X
K04R83H	16.4	0.15	K1014	358.857	231.942	168.113	11.106	0.15295	2.86274	3 X
K04RX6F	16.1	0.15	K1014	21.944	141.561	208.072	11.463	0.14341	3.03529	4 X
K04S46W	15.6	0.15	K1014	78.975	93.746	195.762	9.559	0.06381	2.97819	4 X
K04S50X	16.7	0.15	K1014	9.698	174.990	200.623	6.053	0.28681	2.97648	2 X
K04T12O	19.0	0.15	K1014	115.098	351.723	294.345	1.557	0.14803	1.82826	6 X
K04T45F	16.5	0.15	K1014	336.514	33.358	22.836	10.563	0.04983	3.01019	3 X
K04TA5N	17.3	0.15	K1014	337.267	46.049	1.149	2.009	0.08127	2.99643	3 X
K04TG7W	16.0	0.15	K1014	9.835	36.174	3.974	6.473	0.06621	2.82684	3 X
K04TJ8E	15.6	0.15	K1014	111.921	51.242	203.265	10.497	0.09172	3.09605	4 X
K04TK6B	16.9	0.15	K1014	17.191	327.202	50.334	5.183	0.27039	2.99589	2 X
K04TN6H	15.9	0.15	K1014	301.652	246.225	196.412	8.307	0.12463	3.11425	2 X
K04TS3J	16.6	0.15	K1014	39.020	319.244	1.587	10.208	0.27131	2.97126	2 X
K04V01B	15.7	0.15	K1014	345.147	27.833	33.162	9.653	0.16658	3.00032	3 X
K04V19O	15.2	0.15	K1014	349.893	162.701	237.652	12.095	0.12333	3.10999	3 X
K04V64P	15.5	0.15	K1014	358.372	155.111	236.023	11.929	0.27718	3.09872	2 X
K04X00V	15.8	0.15	K1014	336.998	45.066	11.766	11.175	0.12772	3.07117	3 X
K04X02T	16.6	0.15	K1014	331.549	25.175	55.502	2.594	0.23833	3.07143	2 X

K04XD0Q	16.5	0.15	K1014	302.825	259.440	192.208	9.175	0.05124	3.17193	4	X
K04Y10M	15.0	0.15	K1014	295.384	230.151	245.932	14.076	0.05861	3.05320	3	X
K05C61R	17.2	0.15	K1014	20.310	267.324	144.955	23.750	0.13854	1.92993	4	X
K05H00U	16.8	0.15	K1014	61.538	257.153	11.334	6.274	0.10601	2.35456	5	X
K05J29B	13.6	0.15	K1014	193.040	337.861	209.887	20.685	0.02476	5.21171	4	X
K05JC0V	13.2	0.15	K1014	49.376	124.866	216.425	18.224	0.04963	5.08599	5	X
K05L42C	16.7	0.15	K1014	64.283	202.342	110.075	3.047	0.21872	2.38689	2	X
K05M48C	18.1	0.15	K1014	46.632	181.739	168.295	6.673	0.15489	2.37071	3	X
K05N70F	17.7	0.15	K1014	91.407	173.917	110.131	2.610	0.17631	2.38963	3	X
K05O17X	17.7	0.15	K1014	57.675	141.154	179.699	6.546	0.13256	2.45438	3	X
K05Q31B	17.4	0.15	K1014	41.443	286.531	68.780	5.758	0.22485	2.41154	4	X
K05Q33F	16.9	0.15	K1014	78.511	340.927	341.185	5.343	0.15240	2.37114	4	X
K05QI8K	17.7	0.15	K1014	60.012	326.490	15.928	6.121	0.13023	2.43144	2	X
K05R10H	17.5	0.15	K1014	63.604	349.573	349.566	6.374	0.15174	2.39755	2	X
K05R45L	16.3	0.15	K1014	55.885	347.081	344.356	13.580	0.17548	2.55378	2	X
K05S04C	16.7	0.15	K1014	46.990	119.488	200.220	12.562	0.20399	2.58599	2	X
K05S31V	16.9	0.15	K1014	189.698	176.776	28.690	13.703	0.04444	2.55130	3	X
K05S44O	17.3	0.15	K1014	53.135	333.275	352.036	3.542	0.14240	2.57154	3	X
K05S60S	17.8	0.15	K1014	71.181	289.049	22.395	3.646	0.14871	2.53221	4	X
K05SN7M	16.7	0.15	K1014	77.785	299.006	359.060	3.774	0.06807	2.64867	4	X
K05T15Z	18.3	0.15	K1014	343.075	56.698	1.303	12.508	0.13630	2.53070	2	X
K05U40C	17.1	0.15	K1014	299.071	237.165	227.244	8.761	0.21720	2.73067	2	X
K05U58H	17.5	0.15	K1014	332.270	24.770	35.901	3.490	0.09648	2.66404	2	X
K05U58U	17.5	0.15	K1014	20.927	111.282	253.042	1.144	0.22450	2.64025	2	X
K05U79F	15.9	0.15	K1014	348.808	204.470	215.438	14.464	0.08582	2.61992	3	X
K05U98E	17.0	0.15	K1014	223.578	12.560	156.244	2.922	0.05242	2.69001	5	X
K05UF8H	16.3	0.15	K1014	151.574	17.800	230.735	8.820	0.09216	2.57306	3	X
K05UJ3M	18.0	0.15	K1014	351.317	240.123	164.412	1.696	0.11203	2.58164	2	X
K05UN4L	17.5	0.15	K1014	43.685	167.379	171.558	3.546	0.26251	2.58870	2	X
K05UN9X	16.9	0.15	K1014	288.038	348.112	146.530	5.336	0.17646	2.62289	2	X
K05UT9K	17.4	0.15	K1014	29.583	138.493	212.951	1.152	0.09939	2.69166	2	X
K05UZ3A	16.7	0.15	K1014	27.015	323.155	16.711	13.800	0.28896	2.63705	2	X
K05Ug5W	17.8	0.15	K1014	48.714	91.763	247.208	2.733	0.24370	2.57202	2	X
K05Uo9X	16.8	0.15	K1014	352.680	75.389	324.912	5.557	0.19567	2.63550	2	X
K05Up2T	16.5	0.15	K1014	16.254	284.288	70.066	12.112	0.21069	2.69073	3	X
K05V06M	16.9	0.15	K1014	328.997	49.040	42.473	12.378	0.14260	2.61682	2	X
K05V32O	15.6	0.15	K1014	45.532	116.992	236.746	13.986	0.12390	2.63121	3	X
K05V72E	16.7	0.15	K1014	34.121	118.050	227.472	10.231	0.19905	2.67633	2	X
K05VD6C	17.3	0.15	K1014	301.932	35.601	76.459	6.252	0.10840	2.65469	3	X
K05W24S	17.5	0.15	K1014	29.100	9.422	2.331	2.221	0.19949	2.60863	3	X
K05W34D	16.4	0.15	K1014	354.129	323.889	73.103	8.530	0.31055	2.69612	2	X
K05W36C	16.2	0.15	K1014	350.679	309.841	88.717	5.092	0.10227	2.76198	2	X
K05W36D	16.3	0.15	K1014	103.259	213.537	83.476	6.349	0.04609	2.71873	2	X
K05W54B	16.3	0.15	K1014	6.617	312.713	94.554	9.441	0.26409	2.67816	3	X
K05WB8J	16.3	0.15	K1014	24.103	105.999	274.879	8.196	0.21749	2.58652	2	X
K05WD6Z	18.1	0.15	K1014	32.302	111.362	234.738	4.359	0.18103	2.65419	2	X
K05WF3B	16.0	0.15	K1014	338.060	132.042	272.659	4.973	0.02876	2.80181	2	X
K05WH5C	17.2	0.15	K1014	327.414	11.305	67.202	2.963	0.22025	2.75301	4	X
K05Y04Z	17.7	0.15	K1014	12.080	102.960	289.010	4.410	0.19353	2.65200	2	X
K05Y26O	17.2	0.15	K1014	351.886	337.280	81.672	4.025	0.18795	2.67542	3	X
K05Y35O	16.8	0.15	K1014	288.813	201.260	270.930	5.352	0.00604	2.86647	2	X
K05Y85D	16.6	0.15	K1014	153.622	146.703	91.341	3.226	0.04703	2.86061	3	X
K06A35M	16.8	0.15	K1014	308.589	205.735	230.385	0.888	0.02547	3.05672	3	X
K06A39V	16.7	0.15	K1014	153.906	294.201	300.882	3.217	0.09685	3.08854	5	X
K06A54E	17.0	0.15	K1014	295.679	296.373	160.621	3.430	0.12656	2.97484	2	X

K06B08G	15.7	0.15	K1014	340.720	283.487	141.924	4.974	0.14724	3.00070	4	X
K06B09Q	15.7	0.15	K1014	240.234	258.795	273.546	11.503	0.10212	2.99846	3	X
K06B59G	16.8	0.15	K1014	269.235	279.536	201.091	0.314	0.13057	3.16833	3	X
K06BI2V	16.0	0.15	K1014	263.707	174.106	332.455	8.607	0.03582	3.06416	2	X
K06BQ3W	15.4	0.15	K1014	354.790	21.766	358.567	8.162	0.26339	3.26316	3	X
K06BR8M	15.4	0.15	K1014	173.661	240.252	337.509	8.050	0.09774	3.19462	6	X
K06D00B	15.5	0.15	K1014	297.347	107.122	8.409	9.934	0.05301	2.97886	2	X
K06D20T	16.4	0.15	K1014	308.855	277.045	167.980	4.243	0.13172	3.12707	3	X
K06D25G	16.5	0.15	K1014	351.088	69.581	351.366	2.736	0.06644	3.06067	4	X
K06DI9M	15.5	0.15	K1014	352.751	232.489	173.696	27.719	0.23697	3.18002	3	X
K06DJ9Z	15.2	0.15	K1014	190.103	202.967	1.439	26.983	0.07143	3.14510	4	X
K06SZ2T	16.6	0.15	K1014	293.816	7.665	325.550	4.364	0.16551	2.71974	3	X
K06UB8U	17.9	0.15	K1014	267.011	32.047	30.955	13.634	0.24384	2.53173	2	X
K06V14V	18.5	0.15	K1014	64.078	4.779	332.118	2.042	0.13104	2.13067	4	X
K06V87B	17.4	0.15	K1014	44.885	60.585	275.865	5.903	0.12552	2.21192	2	X
K06WF9Z	17.3	0.15	K1014	322.282	58.969	16.533	1.564	0.11481	2.42859	2	X
K06X29S	17.0	0.15	K1014	330.759	303.943	131.222	5.896	0.18064	2.28191	5	X
K06X51D	16.6	0.15	K1014	57.412	32.923	282.897	6.553	0.09676	2.47152	4	X
K06X59V	18.9	0.15	K1014	350.345	356.268	72.073	4.441	0.14850	2.24758	4	X
K07A03Z	16.7	0.15	K1014	329.597	127.748	305.993	23.821	0.20783	2.33459	3	X
K07B10R	17.3	0.15	K1014	15.255	353.141	21.110	3.627	0.21388	2.41429	3	X
K07B14E	17.7	0.15	K1014	332.286	115.831	329.555	3.631	0.11541	2.32774	3	X
K07B70B	17.1	0.15	K1014	339.853	296.880	137.414	5.862	0.17685	2.39051	2	X
K07C32G	16.7	0.15	K1014	71.048	7.645	304.201	3.872	0.14087	2.63967	4	X
K07C52O	16.1	0.15	K1014	228.055	195.893	337.876	11.150	0.07809	2.64442	3	X
K07D34H	17.9	0.15	K1014	350.449	79.626	356.661	4.617	0.18909	2.36963	2	X
K07D49F	16.0	0.15	K1014	190.391	171.178	34.110	17.410	0.08042	2.77637	3	X
K07D78W	17.0	0.15	K1014	49.673	344.794	356.523	5.879	0.06019	2.68089	2	X
K07D82U	15.8	0.15	K1014	168.516	197.560	0.984	21.033	0.20390	3.11586	2	X
K07DB3V	16.5	0.15	K1014	14.730	32.369	348.500	8.328	0.03068	2.72651	2	X
K07E29N	17.5	0.15	K1014	8.369	276.881	130.867	2.746	0.19116	2.34631	2	X
K07E32X	16.5	0.15	K1014	9.019	13.722	16.906	11.763	0.10335	2.69754	3	X
K07E35M	16.8	0.15	K1014	91.727	260.388	27.135	8.933	0.11604	3.06690	2	X
K07E43X	16.5	0.15	K1014	267.264	134.263	357.828	9.720	0.17486	2.67065	3	X
K07E46H	16.1	0.15	K1014	184.936	194.127	0.200	12.757	0.19147	3.01501	2	X
K07E55A	18.2	0.15	K1014	335.556	359.366	90.648	3.482	0.17810	2.41088	2	X
K07E66E	16.6	0.15	K1014	30.655	273.691	85.739	3.195	0.08646	2.85562	5	X
K07E77K	17.1	0.15	K1014	254.775	9.416	152.718	4.716	0.18082	2.60031	2	X
K07EE5L	17.5	0.15	K1014	21.985	16.051	8.672	9.637	0.12447	2.61113	3	X
K07EF0N	16.5	0.15	K1014	41.187	213.207	138.890	5.166	0.08152	2.78400	3	X
K07EH2A	15.9	0.15	K1014	33.728	352.526	353.731	9.203	0.09628	3.04950	2	X
K07EH4G	15.9	0.15	K1014	108.972	274.468	359.775	9.269	0.08477	3.12333	2	X
K07F19Z	16.7	0.15	K1014	82.332	291.526	357.270	14.004	0.11723	3.11114	2	X
K07G00P	16.0	0.15	K1014	74.560	113.535	204.196	5.884	0.02018	3.03692	2	X
K07G04B	16.3	0.15	K1014	94.148	244.203	55.836	9.511	0.06241	2.98136	3	X
K07G18E	16.7	0.15	K1014	161.300	353.858	240.635	6.751	0.12279	3.11703	2	X
K07G25U	17.1	0.15	K1014	284.265	127.698	357.652	11.387	0.12225	2.64334	2	X
K07G73C	16.6	0.15	K1014	223.475	124.508	55.088	10.014	0.06923	2.85700	2	X
K07H29C	16.2	0.15	K1014	42.307	147.494	184.005	8.808	0.12372	3.05770	2	X
K07H60K	15.5	0.15	K1014	21.683	162.072	187.564	14.965	0.08251	3.11876	3	X
K07TK7S	16.1	0.15	K1014	304.095	217.220	8.143	4.845	0.10395	2.78344	4	X
K08C06V	16.8	0.15	K1014	209.738	316.756	105.007	5.795	0.17596	2.60956	4	X
K08D48C	17.3	0.15	K1014	37.482	330.892	8.109	7.971	0.14508	2.27652	2	X
K08D59E	18.6	0.15	K1014	344.051	85.785	334.503	17.476	0.07051	1.85582	2	X
K08D82X	17.3	0.15	K1014	117.450	232.863	26.924	2.948	0.15369	2.33764	2	X

K08E29V	17.1	0.15	K1014	70.719	106.021	180.341	8.013	0.16112	2.73470	2 X
K08EE6R	17.0	0.15	K1014	112.956	138.690	109.379	3.790	0.15257	2.60979	2 X
K08F05T	15.8	0.15	K1014	53.699	256.615	14.867	27.209	0.38823	3.26101	2 X
K08F25B	18.7	0.15	K1014	110.721	229.434	44.020	7.749	0.05777	2.22159	3 X
K08F46S	17.3	0.15	K1014	74.597	150.699	149.579	3.487	0.20344	2.37305	2 X
K08F48Z	17.5	0.15	K1014	50.481	276.063	56.572	2.046	0.20072	2.36700	5 X
K08FA4B	15.8	0.15	K1014	42.652	283.168	59.796	14.800	0.27478	2.70690	2 X
K08FA4P	17.9	0.15	K1014	197.176	5.203	180.092	1.965	0.14992	2.33597	2 X
K08G97W	15.7	0.15	K1014	62.293	257.400	26.507	12.412	0.16836	3.09532	2 X
K08GA0L	16.7	0.15	K1014	60.700	124.364	203.591	13.211	0.22593	2.56560	4 X
K08O15B	15.6	0.15	K1014	223.026	243.103	305.172	10.403	0.09632	2.76954	4 X
K08Q06D	12.5	0.15	K1014	3.462	180.788	203.170	16.035	0.10785	5.25328	5 X
K08Q42G	13.7	0.15	K1014	230.215	123.657	49.261	4.231	0.05324	5.27721	4 X
K08R04K	13.9	0.15	K1014	316.229	254.505	194.240	7.708	0.03463	5.21807	3 X
K08R31D	13.5	0.15	K1014	338.694	248.530	176.729	6.407	0.09228	5.29079	2 X
K08R69T	12.9	0.15	K1014	334.955	228.853	195.879	7.681	0.08975	5.31011	3 X
K08RC2W	13.2	0.15	K1014	311.276	143.826	305.657	5.372	0.10242	5.26745	3 X
K08RC5O	14.2	0.15	K1014	336.822	175.827	249.183	2.830	0.08977	5.15187	2 X
K08S36O	13.4	0.15	K1014	341.818	251.875	161.168	4.591	0.07959	5.20506	3 X
K08U29S	16.8	0.15	K1014	91.492	286.139	98.742	2.183	0.17299	3.11075	3 X
K08UX7Q	16.5	0.15	K1014	131.587	284.612	45.860	3.511	0.09792	3.07415	4 X
K08Y07C	13.1	0.15	K1014	351.527	196.147	207.599	12.067	0.20530	5.23970	3 X
K09C54F	16.3	0.15	K1014	108.495	312.605	155.991	8.260	0.17739	2.76889	5 X
K09DA6D	15.8	0.15	K1014	112.009	328.490	134.715	6.946	0.04900	3.02962	3 X
K09O05L	16.4	0.15	K1014	38.646	97.087	226.479	6.259	0.26659	3.02175	3 X
K09O18C	17.9	0.15	K1014	62.666	124.300	165.174	3.769	0.20628	2.35317	5 X
K09P07S	15.3	0.15	K1014	77.120	132.507	152.359	11.541	0.10331	3.19160	6 X
K09P11R	16.9	0.15	K1014	51.523	340.174	340.446	5.261	0.18771	2.35961	3 X
K09P12X	17.4	0.15	K1014	8.604	44.938	345.416	4.747	0.16482	2.23017	2 X
K09P15S	15.7	0.15	K1014	358.595	205.812	179.716	11.576	0.08980	3.09254	3 X
K09Q04J	16.0	0.15	K1014	59.604	329.134	335.408	13.544	0.16141	2.77112	2 X
K09Q22T	17.4	0.15	K1014	25.231	254.358	103.081	2.515	0.20434	2.41510	2 X
K09Q23O	17.3	0.15	K1014	37.664	222.136	103.385	4.317	0.22419	2.55003	3 X
K09Q26J	16.4	0.15	K1014	19.529	321.268	57.166	10.416	0.12653	3.14709	2 X
K09Q31C	15.9	0.15	K1014	57.325	57.813	253.923	13.963	0.14975	2.86147	3 X
K09Q32W	17.6	0.15	K1014	355.148	215.131	182.226	22.409	0.09359	1.97784	2 X
K09Q37C	16.2	0.15	K1014	25.459	352.579	7.238	9.649	0.09714	3.09863	2 X
K09Q46U	16.8	0.15	K1014	62.532	220.058	85.170	3.738	0.19300	2.38081	5 X
K09Q46V	16.9	0.15	K1014	45.737	271.350	49.168	4.407	0.22591	2.64757	5 X
K09R00B	15.0	0.15	K1014	70.145	289.915	52.469	14.190	0.21666	2.57941	2 X
K09R04E	16.8	0.15	K1014	21.283	30.229	348.581	2.922	0.10294	2.75790	6 X
K09R07K	16.7	0.15	K1014	56.571	102.523	202.099	11.953	0.22352	2.72567	2 X
K09R08X	16.1	0.15	K1014	46.046	337.695	1.963	7.421	0.05792	3.16105	3 X
K09R11T	17.1	0.15	K1014	20.097	180.209	186.889	0.737	0.24462	3.08424	2 X
K09R12L	15.6	0.15	K1014	18.517	189.568	181.960	5.906	0.17382	3.07654	5 X
K09R12T	16.6	0.15	K1014	26.528	182.010	183.326	11.819	0.12082	2.76544	3 X
K09R14H	16.2	0.15	K1014	82.018	117.504	189.806	5.501	0.06172	2.70213	5 X
K09R14Y	16.2	0.15	K1014	337.487	236.007	191.462	12.585	0.14474	3.17797	5 X
K09R17G	16.2	0.15	K1014	97.336	271.319	17.883	14.022	0.06368	3.00852	3 X
K09R17W	16.9	0.15	K1014	127.686	235.963	22.668	13.821	0.10757	2.65447	3 X
K09R20C	17.2	0.15	K1014	3.641	150.331	241.346	5.801	0.27010	2.70435	3 X
K09R20D	15.1	0.15	K1014	319.128	219.272	217.759	10.315	0.19176	3.18235	5 X
K09R25B	17.8	0.15	K1014	101.723	110.359	168.221	1.555	0.16584	2.44540	4 X
K09R27H	17.4	0.15	K1014	27.350	5.212	3.955	8.009	0.18817	2.35121	3 X
K09R30M	17.3	0.15	K1014	350.662	67.944	350.534	7.571	0.24010	3.03864	2 X

K09R37M	16.0	0.15	K1014	23.969	356.179	5.216	0.781	0.13369	3.09125	5 X
K09R42M	17.8	0.15	K1014	327.923	198.900	246.163	5.079	0.13114	2.29994	2 X
K09R46G	16.8	0.15	K1014	77.464	34.823	279.124	1.210	0.08131	2.82890	4 X
K09R60D	15.0	0.15	K1014	16.882	144.399	220.438	16.605	0.23511	3.13182	4 X
K09R60V	15.7	0.15	K1014	6.968	74.002	305.217	9.848	0.14857	2.96700	3 X
K09R61M	16.7	0.15	K1014	357.361	256.230	131.238	7.763	0.22969	2.52948	4 X
K09R62Y	14.2	0.15	K1014	29.310	153.264	196.196	4.606	0.05430	5.10116	3 X
K09R63F	15.0	0.15	K1014	348.811	9.636	7.880	28.127	0.17547	3.18961	7 X
K09R63N	16.5	0.15	K1014	22.483	86.477	272.886	4.669	0.05241	2.69929	3 X
K09R65N	17.3	0.15	K1014	27.053	222.226	142.881	15.191	0.31967	2.52122	3 X
K09R65Q	15.1	0.15	K1014	28.665	278.842	60.610	22.223	0.19187	3.16858	3 X
K09R67T	17.4	0.15	K1014	44.904	60.554	275.869	5.903	0.12560	2.21191	3 X
K09S05X	16.7	0.15	K1014	36.927	195.525	148.771	1.479	0.17710	3.07943	5 X
K09S14Q	16.7	0.15	K1014	49.372	358.835	326.996	7.314	0.07863	3.05343	2 X
K09S14W	15.9	0.15	K1014	344.117	70.415	330.788	8.479	0.07448	3.10118	2 X
K09S15S	17.2	0.15	K1014	353.216	186.623	214.147	8.047	0.07962	2.68147	2 X
K09S18N	16.2	0.15	K1014	241.333	18.598	146.056	7.205	0.06654	2.41635	6 X
K09S25N	15.3	0.15	K1014	221.758	168.332	1.884	12.022	0.08436	3.10759	5 X
K09S25Q	12.7	0.15	K1014	296.315	261.236	196.450	13.057	0.12088	5.07868	3 X
K09S29H	17.9	0.15	K1014	357.731	253.014	154.310	1.343	0.14774	2.67276	2 X
K09S30K	17.9	0.15	K1014	156.304	196.924	41.732	3.006	0.08534	2.24719	5 X
K09S32V	15.9	0.15	K1014	314.083	230.292	234.767	5.025	0.19526	3.13511	6 X
K09S33V	17.6	0.15	K1014	45.891	49.331	300.821	2.843	0.08991	2.74277	3 X
K09S34A	16.9	0.15	K1014	33.318	19.775	346.881	5.202	0.07992	2.66185	3 X
K09S35C	15.9	0.15	K1014	36.148	145.443	213.784	9.416	0.06911	3.38072	4 X
K09S36F	18.3	0.15	K1014	328.417	110.810	339.033	3.440	0.11769	2.23037	2 X
K09S36Q	15.8	0.15	K1014	316.699	82.801	7.756	9.481	0.09436	3.15812	3 X
K09S38D	17.1	0.15	K1014	172.396	219.349	9.624	6.660	0.07577	2.41220	3 X
K09S38X	17.1	0.15	K1014	61.587	331.148	352.416	2.475	0.20286	2.57116	3 X
K09S44F	15.7	0.15	K1014	129.163	286.698	336.870	4.703	0.12935	3.08465	6 X
K09S46H	16.5	0.15	K1014	264.816	191.587	330.445	4.212	0.22168	2.64338	5 X
K09S46Q	17.2	0.15	K1014	92.123	291.181	0.950	6.438	0.18634	2.66356	2 X
K09S52F	17.1	0.15	K1014	132.175	204.047	52.834	2.229	0.03371	2.70312	5 X
K09S58F	17.3	0.15	K1014	290.167	214.313	274.877	4.421	0.09696	2.28810	2 X
K09S59L	17.7	0.15	K1014	21.313	45.495	337.797	6.730	0.13826	2.35589	4 X
K09S61F	12.6	0.15	K1014	20.735	357.100	9.638	20.548	0.17131	5.22539	4 X
K09S65Z	17.0	0.15	K1014	4.921	253.698	145.939	3.111	0.10417	2.96840	4 X
K09S66F	17.3	0.15	K1014	353.257	352.329	74.051	3.338	0.18312	2.37541	3 X
K09S66M	15.6	0.15	K1014	147.614	61.995	190.097	12.404	0.02333	3.20209	7 X
K09S69R	19.2	0.15	K1014	20.187	159.663	209.292	2.746	0.24590	2.58631	2 X
K09S71E	17.2	0.15	K1014	55.585	10.727	316.295	1.771	0.04620	2.70402	2 X
K09S71P	17.4	0.15	K1014	34.628	157.970	185.135	5.589	0.24825	2.67304	2 X
K09S74D	18.2	0.15	K1014	67.863	271.550	55.933	6.208	0.14579	2.26871	2 X
K09S75O	13.5	0.15	K1014	283.734	350.466	129.977	6.041	0.05607	5.29367	5 X
K09S78Z	16.7	0.15	K1014	15.630	151.748	221.288	8.745	0.08969	2.97421	3 X
K09S79H	16.8	0.15	K1014	72.995	37.252	268.315	4.318	0.10088	2.71271	3 X
K09S95V	16.0	0.15	K1014	27.739	11.199	341.803	0.238	0.22422	3.19338	2 X
K09S96C	16.8	0.15	K1014	28.408	341.120	27.246	7.149	0.29491	2.58880	2 X
K09SA1X	15.6	0.15	K1014	11.996	10.760	339.116	3.457	0.11930	3.21036	5 X
K09SA7L	16.5	0.15	K1014	1.885	109.959	298.356	1.986	0.19099	2.65685	3 X
K09SA9T	16.3	0.15	K1014	102.480	190.822	92.017	3.178	0.06193	2.81508	6 X
K09SB0L	15.6	0.15	K1014	14.592	198.733	179.657	17.442	0.18821	3.11369	2 X
K09SB3Q	16.3	0.15	K1014	343.763	194.307	210.914	8.507	0.04197	3.10943	3 X
K09SB4B	15.8	0.15	K1014	33.402	139.069	209.906	10.089	0.11230	3.11756	4 X
K09SB4Q	17.0	0.15	K1014	9.771	172.283	216.422	5.744	0.09544	2.38509	5 X

K09SB4R	16.5	0.15	K1014	146.501	262.923	331.699	5.984	0.12990	2.64619	4	X
K09SB5G	16.0	0.15	K1014	72.529	99.945	209.115	8.841	0.06402	3.12560	3	X
K09SD1H	17.0	0.15	K1014	10.773	318.115	73.959	3.216	0.09911	2.86913	3	X
K09SD4M	17.6	0.15	K1014	66.476	251.627	72.446	4.146	0.17754	2.35191	3	X
K09SD5R	16.6	0.15	K1014	35.665	349.072	12.408	12.160	0.18440	2.66203	2	X
K09SD9C	16.0	0.15	K1014	353.309	226.971	172.539	11.209	0.09944	3.04029	4	X
K09SE5E	17.3	0.15	K1014	270.171	311.000	167.572	9.568	0.04123	2.66634	3	X
K09SE5F	18.5	0.15	K1014	36.037	296.951	47.672	2.239	0.22304	2.48311	2	X
K09SE7X	18.0	0.15	K1014	37.516	129.835	217.169	7.973	0.18200	2.57263	2	X
K09SF0N	17.1	0.15	K1014	107.455	289.257	347.768	6.461	0.10062	2.32813	3	X
K09SF3S	17.7	0.15	K1014	39.940	158.212	195.264	6.231	0.15403	2.32305	3	X
K09SF3W	17.8	0.15	K1014	84.461	99.070	188.313	4.173	0.22986	2.41520	3	X
K09SF5R	15.4	0.15	K1014	303.968	97.320	12.576	16.256	0.19624	3.11212	2	X
K09SF5X	17.2	0.15	K1014	50.543	145.296	191.103	12.685	0.13112	2.72810	2	X
K09SF6J	17.6	0.15	K1014	25.408	344.075	28.834	4.290	0.10538	2.56449	2	X
K09SF6K	18.8	0.15	K1014	62.620	162.606	155.857	2.318	0.21843	2.44154	2	X
K09SF6M	17.6	0.15	K1014	322.726	268.612	174.546	5.857	0.07756	2.31157	4	X
K09SF7A	18.5	0.15	K1014	0.768	261.480	150.416	2.305	0.18646	2.30735	3	X
K09SF7E	18.3	0.15	K1014	45.948	318.518	31.163	4.072	0.15192	2.27300	5	X
K09SG0K	17.9	0.15	K1014	353.409	89.713	332.576	2.508	0.17313	2.70883	3	X
K09SG0N	18.0	0.15	K1014	7.375	182.639	222.711	5.752	0.20088	2.63396	3	X
K09SH0N	17.4	0.15	K1014	345.480	109.447	306.666	7.466	0.10715	2.40566	2	X
K09SH2G	15.9	0.15	K1014	34.560	104.583	248.802	7.981	0.08651	3.16841	4	X
K09SH2R	18.7	0.15	K1014	43.533	247.233	95.527	2.151	0.12159	2.14847	3	X
K09SH3F	16.1	0.15	K1014	117.088	274.009	307.022	9.698	0.08689	3.02346	2	X
K09SH9D	15.7	0.15	K1014	337.066	245.448	160.385	16.837	0.08970	3.09769	3	X
K09SI0V	16.3	0.15	K1014	85.671	98.525	188.572	7.772	0.05141	3.24717	3	X
K09SI1C	19.4	0.15	K1014	359.562	68.631	333.736	1.871	0.14103	2.19923	3	X
K09SI1Q	15.9	0.15	K1014	41.262	341.858	338.484	2.153	0.18718	4.01463	4	X
K09SI3P	18.0	0.15	K1014	26.556	185.038	202.219	20.461	0.05805	1.87955	4	X
K09SI4G	16.5	0.15	K1014	128.915	259.239	1.755	12.078	0.15453	2.68494	2	X
K09SI5K	16.9	0.15	K1014	328.039	117.684	329.678	4.590	0.11475	2.55488	4	X
K09SI6Q	16.0	0.15	K1014	301.324	18.691	86.224	3.949	0.03391	3.10783	4	X
K09SI8C	16.2	0.15	K1014	347.737	246.584	176.815	10.409	0.13900	3.08837	6	X
K09SI8T	18.3	0.15	K1014	22.747	276.788	105.874	4.140	0.23514	2.54904	2	X
K09SJ0R	19.3	0.15	K1014	41.327	45.201	298.609	2.625	0.19615	2.45577	2	X
K09SJ6K	18.3	0.15	K1014	55.845	175.125	148.633	5.064	0.19269	2.24684	2	X
K09SK0N	17.7	0.15	K1014	15.737	75.083	311.947	2.132	0.09078	2.52599	2	X
K09SK5T	17.3	0.15	K1014	119.295	245.534	24.379	4.914	0.19848	2.29027	3	X
K09SK6L	16.3	0.15	K1014	68.899	321.438	346.537	8.412	0.10449	3.02093	2	X
K09SN2N	16.9	0.15	K1014	9.638	357.014	31.507	11.551	0.17937	2.38648	3	X
K09SN3P	17.5	0.15	K1014	25.031	155.587	199.752	5.379	0.17135	2.40629	3	X
K09SN4M	15.0	0.15	K1014	350.017	305.668	109.682	10.543	0.07924	3.05013	4	X
K09SP2A	14.2	0.15	K1014	328.701	170.737	262.442	6.160	0.09467	5.31644	2	X
K09SP5A	16.6	0.15	K1014	35.820	220.698	103.032	14.460	0.36569	2.62321	2	X
K09SP5J	15.6	0.15	K1014	18.148	238.476	113.704	17.507	0.19670	3.12319	4	X
K09SP5R	17.1	0.15	K1014	73.993	59.436	229.356	20.780	0.22436	2.31067	4	X
K09SU5L	16.8	0.15	K1014	27.796	208.397	141.303	1.674	0.14611	3.02814	3	X
K09SU5X	16.6	0.15	K1014	46.467	91.468	210.669	4.607	0.28528	3.15602	3	X
K09SV2Q	16.5	0.15	K1014	53.224	270.203	37.481	1.865	0.20195	3.10331	5	X
K09SV5F	12.9	0.15	K1014	326.800	134.958	287.733	6.962	0.06747	5.23952	5	X
K09SV8T	16.6	0.15	K1014	338.837	256.645	169.237	5.024	0.12588	3.10066	4	X
K09SV9J	17.3	0.15	K1014	100.222	296.275	358.725	4.145	0.04721	2.79867	3	X
K09SV9R	14.5	0.15	K1014	36.421	120.355	241.451	6.666	0.02799	5.13464	3	X
K09SW5S	17.5	0.15	K1014	32.342	181.998	190.188	4.933	0.12574	2.41398	3	X

K09SX0E 15.9 0.15 K1014 13.947 13.119 347.720 9.967 0.10694 3.07340 2 X

New perturbed one-opposition orbits:

Object	H	G	Epoch	M	Peri.	Node	Incl.	e	a	Arc	C
K06S77F	21.6	0.15	K1014	0.064	224.338	1.275	32.453	0.32884	0.92172	23	X
K09Q00O	20.0	0.15	K1014	30.960	117.523	239.888	5.244	0.41269	2.14266	104	X
K09Q34D	17.8	0.15	K1014	36.418	252.405	98.665	6.413	0.49209	2.43531	40	X
K09Q34E	23.6	0.15	K1014	105.605	163.411	142.834	2.626	0.23208	1.28946	40	X
K09Q34G	19.6	0.15	K1014	35.549	300.321	3.395	22.139	0.65111	2.75208	39	X
K09R00N	19.9	0.15	K1014	12.816	310.002	93.520	3.395	0.61385	2.84242	24	X
K09R01D	20.5	0.15	K1014	24.970	0.223	353.657	2.112	0.53654	2.57058	23	X
K09R04D	20.6	0.15	K1014	17.549	9.930	8.443	22.510	0.59826	2.72859	21	X
K09S00W	22.2	0.15	K1014	22.313	203.874	191.084	6.991	0.43750	2.02118	18	X
K09S02H	24.9	0.15	K1014	7.688	98.032	7.029	6.803	0.09367	0.99893	14	X
K09S18G	17.8	0.15	K1014	8.217	204.227	177.818	58.382	0.66724	2.97374	13	X
K09S19T	18.5	0.15	K1014	34.553	336.403	0.493	6.688	0.59156	2.36349	19	X
K09SA0B	23.6	0.15	K1014	38.968	170.062	191.396	6.714	0.43918	1.88195	10	X
K09SA3M	16.9	0.15	K1014	26.042	26.238	300.419	12.784	0.56225	2.86240	10	X
K09SA3T	18.1	0.15	K1014	0.718	233.781	227.295	15.936	0.72177	2.68954	9	X
K09SA4L	23.4	0.15	K1014	26.957	105.747	296.833	2.807	0.44368	1.78507	9	X
K09SA4S	21.0	0.15	K1014	18.422	198.761	187.520	16.392	0.50835	2.60873	9	X

New one-opposition orbits:

Object	H	G	Epoch	M	Peri.	Node	Incl.	e	a	Arc	C
K01TQ0Z	16.2	0.15	K019S	37.263	143.480	177.487	10.805	0.25464	3.07829	14	X
K01TQ1A	17.1	0.15	K019S	302.755	27.644	65.050	6.278	0.26395	2.56820	16	X
K02Tc5M	17.6	0.15	K02B2	32.319	314.049	30.509	13.946	0.26138	2.62353	39	X
K02U78W	17.1	0.15	K02AD	28.864	340.970	18.526	6.500	0.07276	2.67970	24	X
K09O02U	14.9	0.15	K098H	292.442	228.426	204.314	13.259	0.08272	3.23896	66	X
K09P00T	15.4	0.15	K098H	353.261	348.097	6.052	14.020	0.15358	3.21240	46	X
K09P09D	16.5	0.15	K098H	18.653	327.679	355.249	6.148	0.16848	3.20788	42	X
K09P09F	16.1	0.15	K098H	39.721	271.654	23.727	1.351	0.17123	3.08428	42	X
K09P12Q	17.7	0.15	K098H	17.237	303.300	7.495	2.499	0.23356	2.43086	36	X
K09P12W	16.4	0.15	K0996	352.648	19.504	348.020	4.977	0.24663	3.17102	44	X
K09P12Z	17.9	0.15	K0996	17.396	159.076	163.900	14.469	0.26974	2.61273	45	X
K09P15L	16.8	0.15	K0996	26.399	325.312	334.480	8.221	0.28489	2.71420	44	X
K09P15Z	17.2	0.15	K098H	20.012	145.329	172.209	18.751	0.23211	2.60819	42	X
K09P16M	16.4	0.15	K0996	294.969	253.121	172.197	5.595	0.02470	2.63807	44	X
K09Q00Z	14.9	0.15	K0996	26.481	301.233	5.272	16.170	0.23518	3.18044	42	X
K09Q04F	16.6	0.15	K0996	353.185	41.270	318.334	8.457	0.21446	2.80074	42	X
K09Q05T	17.9	0.15	K098H	1.573	153.054	188.306	5.864	0.14090	2.24914	32	X
K09Q05X	18.4	0.15	K098H	357.318	162.608	180.835	8.329	0.21088	2.43287	36	X
K09Q07A	17.5	0.15	K098H	24.101	318.963	333.548	8.732	0.36556	2.15731	58	X
K09Q13L	16.1	0.15	K098H	266.713	236.625	218.129	3.957	0.09676	2.90207	33	X
K09Q13Q	15.4	0.15	K0996	357.796	18.655	338.951	14.807	0.18543	3.07853	43	X
K09Q13V	14.9	0.15	K0996	250.579	286.407	184.642	12.676	0.05062	3.24986	43	X
K09Q14T	17.1	0.15	K0996	359.954	174.696	178.384	6.001	0.08027	2.34597	41	X
K09Q15J	17.5	0.15	K0996	358.551	136.496	220.063	0.662	0.11121	2.51732	43	X
K09Q15L	16.5	0.15	K0996	310.530	257.883	170.521	10.080	0.21110	3.17537	43	X
K09Q15R	17.0	0.15	K0996	48.105	140.361	164.953	6.763	0.04741	2.88810	43	X
K09Q15U	18.1	0.15	K0996	329.765	241.819	160.797	7.972	0.22532	2.44201	41	X
K09Q16F	17.9	0.15	K0996	342.891	22.322	358.876	13.392	0.16400	2.65933	43	X
K09Q16R	17.9	0.15	K0996	58.943	244.485	36.167	2.410	0.14861	2.30051	43	X
K09Q20N	17.5	0.15	K0996	27.119	110.382	202.423	3.821	0.17732	2.39692	39	X
K09Q22K	17.9	0.15	K0996	8.002	335.009	355.402	6.155	0.27035	2.37754	38	X

K09Q23M	16.7	0.15	K098H	5.678	341.731	342.436	11.581	0.19492	2.66916	37	X
K09Q24F	17.8	0.15	K0996	1.627	172.340	172.251	2.476	0.22870	2.37755	43	X
K09Q24G	17.0	0.15	K0996	288.167	167.556	267.777	1.591	0.07375	2.67160	43	X
K09Q24Q	17.3	0.15	K0996	325.775	73.147	323.915	12.102	0.21215	2.34386	43	X
K09Q27L	16.6	0.15	K098H	11.784	48.072	266.380	2.402	0.16421	2.33633	35	X
K09Q30Q	16.5	0.15	K098H	343.534	116.186	255.663	7.667	0.24167	2.44011	59	X
K09Q31B	16.1	0.15	K097S	11.886	70.022	253.639	14.727	0.24765	3.15236	116	X
K09Q32H	18.1	0.15	K0996	23.950	302.927	15.608	2.471	0.19140	2.32449	39	X
K09Q32J	17.8	0.15	K0996	16.464	297.848	31.417	1.679	0.19257	2.34413	39	X
K09Q33M	17.1	0.15	K0996	352.919	75.522	297.153	11.719	0.27328	2.62607	32	X
K09Q34T	16.3	0.15	K0996	2.226	58.491	297.237	13.262	0.28047	2.99861	33	X
K09Q38Z	16.9	0.15	K0996	26.400	134.697	184.003	11.279	0.16176	3.07885	39	X
K09Q40A	17.9	0.15	K0996	71.185	276.101	355.711	6.165	0.09585	2.45172	32	X
K09Q42V	17.4	0.15	K0996	12.403	270.994	54.198	5.259	0.20111	2.37216	32	X
K09Q43D	16.5	0.15	K0996	356.943	12.402	341.256	13.546	0.26224	2.68109	43	X
K09Q44X	18.3	0.15	K0996	332.834	227.738	167.719	8.477	0.29335	2.24853	31	X
K09Q45D	17.0	0.15	K0996	357.279	181.741	170.906	15.076	0.26628	2.63108	24	X
K09Q45J	17.0	0.15	K0996	21.382	285.810	32.650	3.776	0.17910	2.33950	41	X
K09Q45P	18.3	0.15	K0996	24.809	339.582	331.237	5.352	0.19588	2.35753	39	X
K09Q45Q	17.9	0.15	K0996	336.115	184.913	204.946	3.444	0.24339	2.44508	30	X
K09Q45R	16.3	0.15	K0996	43.722	112.786	185.207	5.164	0.13793	3.10375	41	X
K09Q46N	17.8	0.15	K0996	353.913	16.265	347.827	2.771	0.20906	2.40620	44	X
K09Q51L	15.7	0.15	K0996	358.771	3.869	348.857	17.819	0.25592	3.09355	31	X
K09Q51R	17.7	0.15	K0996	13.389	128.039	204.294	1.022	0.20362	2.35633	39	X
K09R01C	15.0	0.15	K0996	311.776	35.926	25.741	11.305	0.20338	3.20524	30	X
K09R01X	18.7	0.15	K0996	340.554	215.109	184.317	5.089	0.37681	2.38700	17	X
K09R02Y	17.3	0.15	K0996	19.685	328.651	355.809	12.396	0.29854	2.58087	33	X
K09R03E	16.3	0.15	K0996	332.556	83.465	309.965	10.520	0.19007	2.62633	43	X
K09R03R	17.6	0.15	K0996	331.559	18.358	4.669	19.896	0.07351	1.88929	38	X
K09R06S	17.1	0.15	K0996	327.045	193.818	195.271	6.682	0.11647	2.37013	41	X
K09R06X	16.8	0.15	K0996	11.643	79.081	257.473	3.000	0.20798	2.39525	12	X
K09R06Y	18.0	0.15	K098H	6.082	348.456	350.784	18.852	0.06212	1.94166	40	X
K09R08H	17.5	0.15	K0996	25.233	124.109	207.828	4.403	0.12414	2.71365	16	X
K09R09C	18.1	0.15	K0996	352.151	183.684	191.618	12.525	0.17403	2.69836	16	X
K09R09K	15.9	0.15	K098H	73.403	276.200	7.741	9.026	0.07164	3.16421	60	X
K09R10S	16.9	0.15	K0996	11.459	353.312	359.224	6.083	0.05170	2.77790	16	X
K09R17X	17.1	0.15	K0996	15.630	180.054	171.920	6.303	0.06919	2.69215	17	X
K09R18G	18.9	0.15	K098H	355.921	343.755	17.381	9.031	0.19716	2.24883	62	X
K09R19Y	17.6	0.15	K0996	14.999	104.621	223.567	7.918	0.21011	2.78792	14	X
K09R20M	16.5	0.15	K0996	9.226	138.935	204.595	20.449	0.17229	3.14196	14	X
K09R22U	19.5	0.15	K0996	6.778	58.162	278.656	4.314	0.27061	2.21168	27	X
K09R23J	16.5	0.15	K0996	359.797	353.026	10.204	15.004	0.12146	2.65002	30	X
K09R25N	17.8	0.15	K0996	9.979	169.993	189.218	3.410	0.05149	2.26330	12	X
K09R26G	16.7	0.15	K0996	345.991	349.397	22.552	8.398	0.30426	2.66185	32	X
K09R26J	17.4	0.15	K0996	3.127	220.973	121.534	5.385	0.21615	2.39091	29	X
K09R32A	17.7	0.15	K0996	24.666	128.655	195.294	12.289	0.22182	2.66736	14	X
K09R32P	16.8	0.15	K0996	333.431	87.484	310.954	13.355	0.23753	2.76362	16	X
K09R33T	12.8	0.15	K0996	357.689	180.640	208.225	20.065	0.13374	5.18888	18	X
K09R33X	13.2	0.15	K0996	283.531	267.086	210.401	8.584	0.12071	5.11439	18	X
K09R33Z	16.3	0.15	K0996	13.038	339.501	21.308	9.773	0.13820	3.01334	18	X
K09R34C	18.1	0.15	K0996	353.436	188.816	191.065	3.423	0.24124	2.34833	18	X
K09R34P	16.4	0.15	K0996	265.802	280.610	203.357	11.088	0.07304	2.97835	18	X
K09R35A	13.6	0.15	K0996	210.664	329.482	210.733	20.433	0.03249	5.16337	18	X
K09R35L	16.9	0.15	K0996	59.248	282.447	25.797	11.681	0.11631	2.71022	18	X
K09R37S	17.6	0.15	K0996	16.684	335.504	8.790	15.316	0.08874	2.68653	13	X

K09R43V	17.2	0.15	K098H	44.601	342.983	300.200	6.453	0.15694	2.54799	33	X
K09R51D	17.2	0.15	K0996	21.289	327.311	24.449	4.249	0.08337	2.67777	17	X
K09R51H	18.2	0.15	K0996	334.389	31.126	25.234	6.492	0.27329	2.59609	17	X
K09R52V	18.5	0.15	K0996	344.807	207.900	189.092	15.215	0.26372	2.63584	14	X
K09R53M	16.3	0.15	K0996	318.830	43.853	27.094	16.760	0.11242	3.06886	17	X
K09R53S	16.9	0.15	K0996	343.547	9.982	25.933	8.886	0.14523	2.38594	17	X
K09R53X	17.6	0.15	K0996	12.917	325.289	26.317	9.648	0.24584	2.63508	17	X
K09R54B	15.8	0.15	K0996	303.577	52.479	33.473	9.404	0.07816	2.96678	17	X
K09R55J	17.6	0.15	K0996	18.696	170.327	178.291	6.889	0.13057	2.36471	14	X
K09R55L	17.7	0.15	K0996	331.318	227.935	188.468	13.149	0.18193	2.69026	14	X
K09R55X	17.3	0.15	K0996	359.021	229.049	142.594	2.739	0.22116	2.34642	12	X
K09R60X	17.2	0.15	K0996	35.738	25.937	271.526	8.848	0.23863	2.39515	43	X
K09R61W	17.2	0.15	K0996	335.533	343.478	50.165	2.420	0.21834	2.41263	28	X
K09R62G	13.5	0.15	K0996	289.475	69.963	46.820	4.741	0.15072	5.20266	17	X
K09R63A	13.7	0.15	K0996	348.756	9.412	16.426	4.348	0.07067	5.25649	16	X
K09R63C	14.1	0.15	K0996	308.051	251.808	186.252	10.655	0.10992	5.32231	16	X
K09R65S	18.5	0.15	K0996	62.743	270.944	10.213	3.940	0.13890	2.36700	14	X
K09R65T	16.1	0.15	K0996	69.893	109.031	194.383	8.385	0.07207	3.03062	12	X
K09R66M	15.2	0.15	K0996	57.795	330.529	321.454	9.013	0.05629	3.03266	13	X
K09R67L	19.1	0.15	K0996	353.461	138.341	234.579	5.092	0.33298	2.60596	8	EX
K09R67N	18.5	0.15	K0996	18.107	6.153	325.785	5.526	0.22953	2.20498	14	X
K09R67R	13.8	0.15	K0996	316.977	160.162	268.585	4.650	0.11754	5.23531	15	X
K09R67S	16.2	0.15	K0996	16.071	112.170	240.699	4.543	0.02978	2.81594	15	X
K09R68J	14.1	0.15	K0996	309.238	60.475	21.543	18.224	0.09707	5.29928	14	X
K09R68T	16.3	0.15	K0996	52.752	125.450	191.853	10.293	0.09215	3.04902	12	X
K09R68U	16.2	0.15	K0996	72.375	277.177	26.962	14.095	0.02201	2.61497	17	X
K09R69E	15.4	0.15	K0996	356.314	170.446	190.707	15.475	0.21992	3.18250	30	X
K09S01V	17.7	0.15	K0996	347.746	27.193	347.550	11.729	0.22664	2.72452	40	X
K09S02A	16.0	0.15	K0996	345.820	62.833	328.406	12.492	0.10903	2.69640	14	X
K09S02B	16.7	0.15	K0996	354.865	46.218	331.658	11.987	0.23496	2.61563	14	X
K09S02Z	18.3	0.15	K0996	345.508	154.320	223.910	4.293	0.23711	2.25283	6	X
K09S10A	18.1	0.15	K0996	332.511	62.717	333.360	6.960	0.25028	2.26893	11	X
K09S10O	13.3	0.15	K0996	283.529	36.079	67.629	3.944	0.08561	5.25991	16	X
K09S10S	15.6	0.15	K0996	320.613	268.421	152.229	25.933	0.18458	3.22939	39	X
K09S12A	17.7	0.15	K0996	7.569	346.269	355.948	7.503	0.21916	2.74354	39	X
K09S12C	17.1	0.15	K0996	347.873	15.972	358.506	16.894	0.25365	2.70535	41	X
K09S12V	16.7	0.15	K0996	276.992	101.670	353.361	13.529	0.13990	2.64278	32	X
K09S14A	16.6	0.15	K0996	46.810	332.644	341.434	14.755	0.14147	2.52322	14	X
K09S14B	18.1	0.15	K0996	48.714	322.867	351.221	18.715	0.07596	1.94821	14	X
K09S16W	17.6	0.15	K0996	2.526	284.265	74.175	0.517	0.25318	2.91105	16	X
K09S18A	15.3	0.15	K0996	6.408	319.782	48.151	17.887	0.20764	3.08531	44	X
K09S20H	15.4	0.15	K0996	48.959	65.754	232.656	16.965	0.16553	2.76145	10	X
K09S20N	18.2	0.15	K0996	357.258	267.671	86.288	1.723	0.24242	2.39165	29	X
K09S23E	17.4	0.15	K097S	12.852	50.238	251.825	5.324	0.21359	2.59006	96	X
K09S23H	18.3	0.15	K098H	12.759	50.834	258.945	4.700	0.19938	2.34236	54	X
K09S26B	16.1	0.15	K0996	53.832	113.870	191.030	26.198	0.08969	3.18901	16	X
K09S27C	17.4	0.15	K0996	27.246	115.326	197.716	0.206	0.31674	3.48771	12	X
K09S27D	16.8	0.15	K0996	319.222	220.991	189.004	11.608	0.03935	2.93482	12	X
K09S30Z	16.2	0.15	K0996	92.517	244.139	26.721	10.691	0.08073	3.08063	16	X
K09S35T	16.1	0.15	K0996	21.832	335.510	6.710	10.181	0.17474	2.61769	12	X
K09S45Z	15.9	0.15	K0996	15.198	325.439	21.527	13.036	0.30464	2.64164	40	X
K09S49C	15.9	0.15	K098H	40.352	351.194	327.229	10.266	0.13293	2.60202	80	X
K09S50Z	16.7	0.15	K0996	347.684	12.971	6.358	5.837	0.31090	3.06796	16	X
K09S51B	17.7	0.15	K0996	308.526	24.973	31.351	2.187	0.08269	2.72096	39	X
K09S51D	18.4	0.15	K0996	344.239	203.328	172.533	5.738	0.15687	2.22829	40	X

K09S52Q	18.4	0.15	K0996	309.722	47.534	18.309	6.090	0.14269	2.19518	12	X
K09S53R	17.1	0.15	K098H	347.599	142.650	226.948	4.637	0.23042	2.39572	61	X
K09S53W	16.5	0.15	K0996	43.865	233.505	86.509	2.901	0.09289	3.04411	12	X
K09S57X	16.7	0.15	K0996	359.295	36.928	335.778	5.689	0.35521	3.22764	9	X
K09S62M	18.6	0.15	K0996	332.555	208.780	178.079	9.059	0.16388	2.57536	22	X
K09S63J	17.6	0.15	K0996	318.091	71.293	350.386	15.091	0.30683	2.81834	3DX	
K09S63W	18.4	0.15	K0996	335.194	215.478	173.103	5.730	0.23184	2.47068	4DX	
K09S64B	18.4	0.15	K0996	19.687	148.904	170.854	1.930	0.20024	2.66904	3	X
K09S64G	17.2	0.15	K0996	330.994	217.428	173.908	18.936	0.17532	3.08321	3DX	
K09S65W	16.8	0.15	K0996	329.617	338.148	76.456	3.068	0.10596	3.02471	12	X
K09S69V	18.3	0.15	K0996	19.897	135.238	189.482	9.273	0.21913	2.58706	42	X
K09S69Y	18.3	0.15	K0996	322.052	196.404	206.472	2.661	0.10816	2.26642	30	X
K09S71C	18.1	0.15	K0996	341.715	67.512	315.390	1.357	0.19179	2.43554	32	X
K09S71F	17.7	0.15	K0996	346.614	172.251	202.843	3.476	0.11598	2.78004	30	X
K09S71G	17.3	0.15	K0996	76.821	68.345	200.397	4.375	0.11998	2.79708	42	X
K09S71S	18.6	0.15	K0996	328.939	136.846	262.001	1.025	0.17295	2.35221	32	X
K09S71T	17.8	0.15	K0996	323.052	58.008	355.148	13.170	0.22403	2.68322	32	X
K09S71U	17.1	0.15	K0996	315.028	224.652	193.829	6.094	0.16130	3.09956	11	X
K09S71Y	18.1	0.15	K0996	307.991	71.948	346.981	5.497	0.09800	2.48822	11	X
K09S72B	16.9	0.15	K0996	330.745	41.429	352.507	8.920	0.09934	2.88795	32	X
K09S72C	17.6	0.15	K0996	64.405	283.619	351.043	7.903	0.15886	2.24086	44	X
K09S72M	16.3	0.15	K098H	40.826	307.993	357.251	11.746	0.10790	3.18167	59	X
K09S72U	16.2	0.15	K0996	14.176	354.710	347.008	8.295	0.08340	3.16592	44	X
K09S72V	17.5	0.15	K0996	45.828	6.563	301.156	2.073	0.04549	2.62509	30	X
K09S72X	19.7	0.15	K0996	19.741	91.695	229.445	1.810	0.24790	2.41894	30	X
K09S73E	16.5	0.15	K0996	13.766	137.620	205.035	3.614	0.07400	3.21690	44	X
K09S73H	16.3	0.15	K0996	52.884	309.018	350.163	9.219	0.07242	3.11484	32	X
K09S73M	18.9	0.15	K0996	337.812	34.402	352.320	7.027	0.18837	2.23517	43	X
K09S73N	15.9	0.15	K0996	42.014	123.328	187.001	14.016	0.07769	3.18720	42	X
K09S73R	17.6	0.15	K0996	332.607	177.985	214.458	1.652	0.14004	2.55413	40	X
K09S73X	17.6	0.15	K0996	51.955	164.369	143.653	4.922	0.14502	2.44321	15	X
K09S74A	17.1	0.15	K0996	321.996	249.052	178.311	11.820	0.17608	2.58388	15	X
K09S74N	15.9	0.15	K0996	94.256	79.162	193.216	24.860	0.14323	3.14696	15	X
K09S74S	16.5	0.15	K0996	58.546	139.401	179.469	12.661	0.01448	2.69421	15	X
K09S80T	16.6	0.15	K098H	27.654	138.935	175.251	15.684	0.06527	3.19270	35	X
K09S80V	16.0	0.15	K0996	344.494	17.860	347.838	9.366	0.02044	3.05862	2DX	
K09S80W	18.1	0.15	K0996	331.114	177.497	211.653	1.005	0.17884	2.26268	23	X
K09S90R	17.7	0.15	K0996	192.448	212.890	314.304	5.211	0.04163	2.29483	39	X
K09S91V	16.7	0.15	K0996	24.821	139.795	202.396	14.474	0.17651	2.98893	14	X
K09S96X	15.6	0.15	K0996	56.184	29.769	262.634	9.889	0.08685	2.99385	9	X
K09S99L	16.8	0.15	K0996	16.774	147.426	190.900	12.498	0.18380	2.85196	8	X
K09SA0J	19.1	0.15	K0996	341.027	196.684	190.353	6.800	0.21910	2.34105	8	X
K09SA0U	16.3	0.15	K0996	27.059	307.856	22.383	32.020	0.30110	2.59639	31	X
K09SA1K	16.3	0.15	K0996	7.670	328.067	11.142	6.401	0.06044	2.76929	41	X
K09SA1W	15.9	0.15	K099Q	10.754	219.571	144.260	6.441	0.22835	3.13505	6	X
K09SA2G	18.3	0.15	K0996	351.391	186.232	186.277	2.103	0.19051	2.23164	8	X
K09SA2N	16.3	0.15	K0996	1.817	330.757	45.957	12.705	0.29481	2.81065	8	X
K09SA2Y	18.5	0.15	K0996	343.429	359.139	20.216	3.110	0.20726	2.39346	9	X
K09SB0S	17.5	0.15	K0996	10.336	354.350	350.686	8.566	0.35173	2.64230	11	X
K09SB1H	15.5	0.15	K0996	35.516	345.249	336.829	8.671	0.10236	3.15593	8	X
K09SB9V	15.5	0.15	K0996	57.619	101.161	193.609	26.080	0.13610	3.14148	14	X
K09SD3S	18.2	0.15	K0996	353.145	246.857	133.904	3.112	0.21754	2.64795	14	X
K09SD3X	17.7	0.15	K0996	350.017	214.123	174.035	8.381	0.23384	2.74565	14	X
K09SD4A	16.7	0.15	K0996	11.293	233.738	127.731	3.839	0.10158	2.72168	14	X
K09SD4B	16.7	0.15	K0996	358.412	262.674	114.615	4.397	0.10139	2.76734	14	X

K09SD6C	17.6	0.15	K0996	328.487	201.268	211.316	7.091	0.09588	2.37718	14	X
K09SD6U	17.5	0.15	K0996	353.909	17.953	7.428	3.247	0.09316	2.66223	14	X
K09SD7G	16.1	0.15	K0996	334.887	211.808	206.057	16.795	0.20723	3.10187	14	X
K09SD8D	17.9	0.15	K0996	312.061	157.400	281.110	0.258	0.16136	2.42146	14	X
K09SD8H	17.5	0.15	K0996	38.009	284.246	28.356	3.986	0.27085	2.67924	14	X
K09SD8K	15.7	0.15	K0996	319.525	49.050	23.506	4.262	0.13304	3.12990	14	X
K09SD8N	16.6	0.15	K0996	331.172	35.573	26.610	4.121	0.18332	3.19733	14	X
K09SD8R	15.5	0.15	K0996	12.828	338.350	29.377	10.221	0.07035	3.12675	14	X
K09SD9G	16.1	0.15	K0996	332.196	33.294	1.909	5.246	0.08199	2.92159	12	X
K09SE0D	14.0	0.15	K0996	352.618	41.423	343.194	11.666	0.14660	5.22334	14	X
K09SE0W	16.1	0.15	K098H	84.894	50.157	224.904	7.738	0.04621	2.96821	65	X
K09SE3X	16.5	0.15	K0996	10.185	162.059	191.109	1.484	0.27545	3.03420	12	X
K09SE4V	17.0	0.15	K0996	308.111	41.789	10.719	6.477	0.06298	2.30492	40	X
K09SE4Z	17.1	0.15	K0996	42.475	273.763	27.554	3.570	0.13690	2.67710	31	X
K09SE5A	16.8	0.15	K0996	24.090	162.829	168.614	9.226	0.02759	2.72437	43	X
K09SE6C	17.2	0.15	K0996	30.587	194.972	126.569	3.763	0.08440	2.81340	33	X
K09SE6J	17.3	0.15	K099Q	330.659	30.741	25.710	6.197	0.11669	2.25051	13	X
K09SE9W	17.9	0.15	K0996	347.602	52.160	323.656	3.389	0.19000	2.20902	19	X
K09SF1Z	18.3	0.15	K0996	44.418	353.276	306.108	1.202	0.18707	2.31822	16	X
K09SF3M	18.4	0.15	K0996	41.117	73.550	226.634	1.820	0.21554	2.37130	16	X
K09SF3X	17.7	0.15	K0996	289.326	254.303	198.377	4.429	0.15268	2.68837	16	X
K09SF4F	17.9	0.15	K0996	321.458	232.784	187.367	10.702	0.20559	2.58160	17	X
K09SF4L	17.4	0.15	K0996	43.504	139.355	181.944	5.640	0.03257	2.72531	16	X
K09SF4N	18.2	0.15	K0996	340.264	208.104	182.049	5.897	0.17555	2.25310	16	X
K09SF4O	16.5	0.15	K0996	69.921	244.407	38.462	1.216	0.14783	3.02184	16	X
K09SF4U	14.1	0.15	K0996	332.666	12.692	21.408	3.583	0.07918	5.26123	44DX	
K09SF5Q	13.7	0.15	K0996	298.875	87.044	11.514	2.816	0.21507	5.20496	16	X
K09SF5U	16.6	0.15	K0996	3.542	164.772	197.315	0.718	0.19831	3.10869	16	X
K09SF5Y	13.2	0.15	K0996	283.441	72.615	21.372	4.769	0.01349	5.13594	16	X
K09SF6Q	13.1	0.15	K0996	318.763	38.815	24.788	12.022	0.08774	5.24763	16	X
K09SF6T	16.2	0.15	K0996	312.062	50.805	16.780	23.309	0.09436	3.19083	12	X
K09SF6Y	17.9	0.15	K0996	346.308	238.118	147.356	1.969	0.19578	2.47280	16	X
K09SF9G	15.6	0.15	K0996	222.502	313.878	215.251	23.274	0.10015	3.12905	13	X
K09SG1C	16.2	0.15	K0996	9.308	343.605	25.813	25.228	0.20221	2.34743	7	X
K09SG4R	15.5	0.15	K0996	351.670	354.912	40.739	10.273	0.09523	3.10021	6	X
K09SG6Y	17.7	0.15	K0996	32.139	91.682	220.171	6.057	0.16146	2.21483	8	X
K09SG7C	16.9	0.15	K0996	302.414	86.954	2.179	4.891	0.23740	3.05667	16	X
K09SG7D	17.6	0.15	K0996	18.235	332.042	0.823	7.895	0.23005	2.75841	16	X
K09SG8E	17.0	0.15	K0996	335.555	164.026	237.620	6.240	0.26834	2.94958	10	X
K09SG9O	15.1	0.15	K099Q	261.022	211.055	262.828	8.242	0.07579	3.06562	3	X
K09SH0K	16.2	0.15	K0996	263.709	111.538	4.764	14.637	0.18245	2.74430	8	X
K09SH0Q	16.2	0.15	K0996	354.021	28.561	341.468	16.014	0.21251	3.13320	12	X
K09SH1H	17.6	0.15	K0996	343.777	198.872	187.712	6.927	0.30203	2.65449	43	X
K09SH2C	21.2	0.15	K0996	350.917	190.818	186.360	12.499	0.39930	2.35220	13	X
K09SH4P	18.0	0.15	K0996	346.247	213.117	165.536	4.302	0.13873	2.23497	11	X
K09SH4R	15.9	0.15	K0996	351.007	18.940	352.137	13.148	0.09829	3.13504	7	X
K09SH5X	18.5	0.15	K099Q	17.251	326.559	21.818	7.459	0.25178	2.25822	13	X
K09SH7T	17.6	0.15	K0996	349.226	94.589	282.587	1.019	0.09410	2.68712	16	X
K09SH7V	18.2	0.15	K0996	39.763	302.647	358.323	3.414	0.23927	2.72875	12	X
K09SI0F	16.0	0.15	K099Q	238.592	316.453	207.200	23.528	0.22325	2.35277	12	X
K09SI0Y	17.6	0.15	K0996	45.704	20.484	272.197	0.884	0.18630	2.68041	32	X
K09SI1A	16.0	0.15	K0996	161.606	202.296	353.399	8.542	0.03804	3.18051	32	X
K09SI1E	16.8	0.15	K0996	18.880	95.895	241.775	1.080	0.02798	2.85898	32	X
K09SI2C	17.8	0.15	K0996	349.741	8.675	2.084	14.504	0.09969	2.70839	42	X
K09SI2N	16.7	0.15	K0996	101.321	67.270	180.496	10.713	0.10420	3.05571	33	X

K09SI3C	15.9	0.15	K0996	183.160	225.196	329.311	8.169	0.04417	3.20523	13	X
K09SI3U	17.3	0.15	K0996	357.036	154.677	223.783	9.807	0.22705	3.15456	12	X
K09SI4A	13.8	0.15	K0996	337.197	131.768	280.731	5.287	0.11581	5.22965	12	X
K09SI4L	16.9	0.15	K0996	316.938	99.244	340.430	7.745	0.23991	3.11705	12	X
K09SI5T	13.3	0.15	K0996	244.740	350.605	152.132	4.297	0.02358	5.34072	11	X
K09SI8S	16.0	0.15	K0996	323.593	9.594	53.654	11.940	0.07189	3.21905	12	EX
K09SI8Z	17.3	0.15	K0996	51.687	268.168	15.973	4.878	0.17468	2.25177	40	X
K09SI9B	18.3	0.15	K099Q	354.923	169.071	216.642	8.381	0.39346	2.63527	7	X
K09SI9C	16.8	0.15	K0996	37.164	324.202	357.969	15.115	0.14607	2.54150	13	X
K09SI9Z	16.8	0.15	K099Q	62.524	92.657	210.598	11.351	0.04511	2.85418	7	X
K09SJ0G	16.8	0.15	K0996	85.782	10.541	254.079	4.212	0.09965	2.61483	11	X
K09SJ1A	17.1	0.15	K0996	31.628	15.042	310.059	4.012	0.11250	2.89745	11	X
K09SJ2M	16.4	0.15	K0996	343.741	45.815	336.684	12.308	0.19451	3.05990	15	X
K09SK1V	17.4	0.15	K0996	40.720	285.304	40.422	4.732	0.09964	2.80573	9	X
K09SK1Z	18.2	0.15	K0996	22.780	162.837	172.146	5.166	0.18741	2.23380	11	X
K09SK2U	17.5	0.15	K0996	347.557	219.175	172.679	5.793	0.35890	2.66112	8	X
K09SK3A	16.9	0.15	K099Q	286.655	349.732	116.875	3.287	0.13012	2.36221	10	X
K09SK3F	16.5	0.15	K099Q	305.218	281.147	160.134	5.734	0.06370	2.71717	10	X
K09SK3G	16.2	0.15	K099Q	14.235	239.979	119.819	3.687	0.14310	2.69801	10	X
K09SK3H	16.5	0.15	K099Q	140.371	58.297	177.409	9.053	0.08128	2.72387	10	X
K09SK3O	17.4	0.15	K099Q	17.239	197.337	163.623	6.141	0.07136	2.73004	10	X
K09SK3Q	13.7	0.15	K0996	257.605	317.827	184.739	13.918	0.12955	5.20515	11	X
K09SK4G	18.4	0.15	K099Q	313.749	215.703	237.137	1.057	0.26419	2.32211	10	X
K09SK4J	15.5	0.15	K099Q	296.402	251.451	209.408	20.804	0.11020	3.36472	10	X
K09SK4R	18.1	0.15	K099Q	3.850	169.659	201.308	5.838	0.26787	2.36834	10	X
K09SK4W	18.1	0.15	K099Q	46.349	301.695	11.502	2.221	0.21813	2.32682	10	X
K09SK5G	18.6	0.15	K099Q	32.838	305.174	19.486	0.515	0.26796	2.30424	10	X
K09SK5O	18.7	0.15	K099Q	359.155	177.082	203.522	2.017	0.17548	2.39204	10	X
K09SK5Z	16.7	0.15	K099Q	15.183	321.891	38.520	1.059	0.22502	3.25030	10	X
K09SK6A	16.2	0.15	K099Q	274.556	96.220	25.011	22.154	0.09179	2.61152	10	X
K09SK7N	18.8	0.15	K0996	16.685	350.823	333.160	5.204	0.30460	2.14778	7	X
K09SL1T	15.4	0.15	K0996	31.754	182.202	141.572	5.607	0.20927	3.94709	11	X
K09SL2G	17.6	0.15	K0996	340.105	202.568	196.612	12.100	0.16771	2.56983	16	X
K09SL2Y	16.7	0.15	K0996	19.321	320.994	23.004	13.192	0.20129	2.68775	12	X
K09SL7P	15.9	0.15	K0996	27.711	340.504	354.226	4.989	0.07055	3.14140	16	X
K09SL8M	13.4	0.15	K0996	284.804	274.150	181.966	10.182	0.03973	5.18427	11	X
K09SL8U	18.3	0.15	K0996	14.091	209.086	114.762	4.103	0.30754	2.37739	32	X
K09SM0R	17.6	0.15	K0996	331.198	14.454	31.885	9.965	0.20575	2.79381	30	X
K09SM1D	16.5	0.15	K0996	57.347	28.145	243.304	5.497	0.18821	3.10696	40	X
K09SM1Y	18.6	0.15	K0996	8.156	76.371	265.231	2.030	0.21096	2.26136	32	X
K09SM4O	17.3	0.15	K0996	344.591	318.045	76.001	3.210	0.07474	2.87128	11	X
K09SM5H	16.3	0.15	K0996	332.793	54.815	332.645	4.949	0.02312	2.69064	44	X
K09SM5L	17.3	0.15	K0996	41.878	17.703	282.326	2.369	0.18116	2.74041	41	X
K09SM5U	16.3	0.15	K0996	2.102	196.754	154.941	2.082	0.15459	3.03165	9	X
K09SM7G	18.0	0.15	K0996	353.045	223.231	144.453	5.670	0.28817	2.54985	8	X
K09SM9J	15.7	0.15	K0996	350.752	36.223	352.082	14.273	0.28045	3.17572	19	X
K09SN5O	16.9	0.15	K0996	37.356	52.039	267.090	2.633	0.17947	2.58410	15	X
K09SN5W	16.4	0.15	K0996	35.750	275.166	52.621	4.591	0.17940	2.84145	12	X
K09SO1L	15.5	0.15	K0996	40.687	63.507	249.615	14.640	0.23290	3.16452	14	X
K09SO1Q	15.3	0.15	K0996	10.842	131.542	222.064	25.278	0.22405	3.16405	14	X
K09SO2K	16.7	0.15	K099Q	18.128	36.161	302.437	6.631	0.22003	2.77320	9	X
K09SO3F	15.2	0.15	K0996	13.857	33.624	298.505	16.399	0.23886	3.13543	44	X
K09SO6O	16.9	0.15	K0996	16.295	318.091	22.100	13.234	0.19550	2.64304	12	X
K09SO7Y	14.3	0.15	K0996	326.711	222.066	176.161	5.926	0.03745	5.13064	8	EX
K09SO8Y	17.5	0.15	K0996	10.253	143.435	205.429	9.398	0.31772	2.65916	16	X

K09SO9R	15.5	0.15	K0996	332.809	224.319	185.947	12.795	0.10530	3.19088	14	X
K09SP0A	16.7	0.15	K0996	301.274	253.150	219.921	2.291	0.29931	3.14716	14	X
K09SP0C	18.5	0.15	K0996	9.028	349.947	6.109	2.481	0.22201	2.39028	14	X
K09SP2V	16.6	0.15	K099Q	303.286	19.571	62.819	5.186	0.05949	2.75932	10	X
K09SP3F	18.4	0.15	K099Q	0.579	170.532	205.923	3.584	0.30824	2.59447	10	X
K09SP5M	15.8	0.15	K097S	18.619	162.635	143.508	34.144	0.20979	2.60873	92	X
K09SQ1T	16.2	0.15	K099Q	73.951	285.508	331.542	10.149	0.24236	2.76432	5	X
K09SQ2Q	15.2	0.15	K099Q	8.039	348.490	6.962	20.732	0.04894	3.19699	6	EX
K09SR1H	18.6	0.15	K099Q	45.078	119.124	202.275	21.362	0.12380	1.86535	8	X
K09SR2L	14.1	0.15	K0996	4.962	160.305	220.193	15.732	0.14530	5.23545	12	X
K09SR3Q	16.0	0.15	K0996	334.488	20.675	16.465	10.938	0.09177	3.17725	12	X
K09SR4V	15.7	0.15	K0996	33.573	296.148	17.565	17.516	0.23104	3.00671	12	X
K09SR5C	17.8	0.15	K0996	4.332	219.990	135.407	1.840	0.20145	2.36230	12	X
K09SR6X	16.8	0.15	K099Q	87.115	232.581	26.806	7.704	0.20597	2.31438	4	X
K09SR9R	17.1	0.15	K0996	344.944	218.144	173.728	9.109	0.24635	2.70248	12	X
K09SS4J	17.6	0.15	K099Q	5.885	148.863	218.549	20.542	0.08749	1.88216	7	X
K09SS6M	15.6	0.15	K099Q	187.227	316.438	236.399	10.507	0.07378	2.96081	5	X
K09SS8T	15.1	0.15	K0996	290.657	70.833	27.903	12.338	0.17587	3.13491	12	EX
K09SS8X	15.4	0.15	K0996	274.973	85.707	18.879	1.066	0.16480	3.15941	8	EX
K09SS9H	14.0	0.15	K0996	333.634	1.493	55.565	8.476	0.11319	5.16959	11	X
K09ST0N	15.8	0.15	K099Q	39.396	185.417	142.383	5.794	0.17822	3.19770	7	X
K09ST0S	17.8	0.15	K099Q	352.115	258.709	132.772	4.733	0.16819	2.60504	7	X
K09ST1T	16.3	0.15	K099Q	38.653	334.577	351.927	13.434	0.03284	3.10986	4	X
K09ST2K	17.7	0.15	K099Q	248.575	352.450	126.198	6.597	0.06010	2.37077	3	X
K09ST2M	18.1	0.15	K099Q	41.210	273.089	24.564	12.861	0.22990	2.64486	3	X
K09ST4L	15.9	0.15	K099Q	89.913	124.389	125.396	7.476	0.18808	3.09565	2	X
K09ST7E	17.5	0.15	K099Q	345.513	126.756	274.428	6.738	0.26373	2.61136	4	X
K09ST9T	16.9	0.15	K0996	329.663	215.360	208.211	13.815	0.25514	3.19330	12	X
K09ST9U	14.2	0.15	K0996	290.967	104.625	10.635	8.927	0.15113	5.18177	12	X
K09ST9V	17.3	0.15	K0996	303.558	219.848	205.852	5.159	0.20506	2.40102	11	X
K09ST9W	16.2	0.15	K0996	135.141	197.608	29.898	9.510	0.06730	2.85398	12	X
K09ST9X	18.8	0.15	K0996	351.230	310.976	65.825	2.745	0.19226	2.29555	12	X
K09ST9Y	16.7	0.15	K0996	110.282	127.981	124.934	4.711	0.08592	2.75202	12	X
K09ST9Z	13.6	0.15	K0996	5.192	283.692	96.211	6.138	0.06330	5.17604	12	EX
K09SU0A	14.4	0.15	K0996	314.635	311.473	131.534	6.109	0.11034	5.16361	12	X
K09SU0B	17.1	0.15	K0996	318.879	70.044	335.449	9.786	0.04655	3.10857	7	X
K09SU0C	17.8	0.15	K0996	270.191	85.091	12.030	5.826	0.09958	2.64773	7	X
K09SU0D	17.3	0.15	K0996	304.708	262.870	155.140	4.693	0.05701	2.79758	9	X
K09SU0E	17.0	0.15	K099Q	6.733	246.447	151.998	2.520	0.28252	3.05920	9	X
K09SU0F	15.8	0.15	K099Q	7.148	189.990	219.094	7.999	0.11772	3.22962	9	X
K09SU1P	13.5	0.15	K0996	258.597	84.287	41.311	4.484	0.07585	5.27408	16	EX
K09SU1R	14.4	0.15	K0996	339.252	219.718	181.541	7.521	0.09029	5.32370	16	X
K09SU1W	16.8	0.15	K0996	358.467	166.643	190.183	10.758	0.24007	3.14370	30	X
K09SU3M	17.3	0.15	K0996	256.341	291.200	186.382	8.081	0.18816	2.50393	4	X
K09SU3P	20.1	0.15	K0996	14.411	145.652	187.978	5.037	0.11529	2.11343	10	X
K09SU4M	15.3	0.15	K098H	196.645	161.265	0.256	9.912	0.06540	3.06115	56	X
K09SU4Q	18.1	0.15	K0996	356.969	177.291	182.212	1.527	0.12884	2.34015	29	X
K09SU4U	15.7	0.15	K0996	336.754	20.444	359.974	7.835	0.01920	3.20519	41	X
K09SU4V	17.5	0.15	K0996	328.264	37.537	357.376	6.298	0.13152	2.46004	41	X
K09SU5D	19.4	0.15	K0996	296.936	255.260	176.724	4.172	0.13968	2.11588	9	EX
K09SU5M	16.1	0.15	K0996	111.471	262.495	330.640	13.594	0.08307	2.77002	10	X
K09SU7S	16.3	0.15	K0996	61.122	71.715	238.452	9.018	0.05684	3.02003	12	X
K09SU8N	13.9	0.15	K0996	310.844	36.776	55.730	13.089	0.16687	5.21722	12	X
K09SU8Z	17.3	0.15	K0996	26.002	132.280	185.625	4.189	0.05940	2.76573	27	X
K09SU9G	16.9	0.15	K0996	0.852	165.424	179.507	6.653	0.18105	2.43109	39	X

K09SU9W	19.5	0.15	K0996	338.145	46.347	347.951	5.456	0.18587	2.21784	12	X
K09SV1X	17.1	0.15	K0996	1.827	348.134	4.103	5.915	0.05827	2.76007	41	X
K09SV3A	18.5	0.15	K0996	15.904	177.682	161.251	3.780	0.23433	2.16758	14	X
K09SV3U	16.9	0.15	K0996	351.141	176.451	214.469	4.573	0.14865	2.89835	14	X
K09SV3Y	18.5	0.15	K0996	44.654	116.620	192.148	2.171	0.20324	2.28331	12	X
K09SV5X	17.5	0.15	K0996	14.778	152.576	200.532	3.336	0.07482	2.57714	8	X
K09SV6N	16.7	0.15	K0996	73.421	252.663	8.512	7.523	0.18650	2.74981	41	X
K09SV6Z	16.8	0.15	K0996	11.349	314.757	23.942	4.250	0.18781	2.80197	31	X
K09SV8A	16.3	0.15	K0996	359.543	180.496	186.464	10.391	0.06014	3.12157	17	X
K09SV8B	16.1	0.15	K0996	276.945	264.439	190.339	9.512	0.03711	3.14261	16	X
K09SV9M	16.7	0.15	K0996	350.052	15.674	13.470	10.403	0.20377	3.13292	13	X
K09SW0H	16.7	0.15	K0996	281.442	255.142	196.981	3.844	0.12548	3.16623	29	X
K09SW1H	13.6	0.15	K0996	12.537	138.581	226.504	12.231	0.07758	5.25318	12	X
K09SW1Q	14.2	0.15	K0996	322.206	9.588	62.658	9.644	0.08393	5.19906	8	X
K09SW1U	14.2	0.15	K0996	287.204	301.575	166.585	9.708	0.06376	5.23205	8	X
K09SW2Z	13.9	0.15	K0996	285.710	87.585	27.733	24.965	0.10692	5.14761	8	X
K09SW3D	17.6	0.15	K0996	339.605	41.372	359.214	16.058	0.22834	3.16238	11	X
K09SW3Z	18.5	0.15	K0996	334.908	20.126	21.530	9.068	0.18958	2.41434	8	X
K09SW4A	19.0	0.15	K0996	349.476	324.734	55.252	2.247	0.19759	2.38319	12	X
K09SW5C	17.1	0.15	K0996	8.544	105.497	258.151	5.219	0.03866	2.71060	12	X
K09SW9F	16.7	0.15	K0996	333.871	178.339	207.795	6.598	0.12789	2.40721	16	X
K09SW9H	15.9	0.15	K0996	325.156	229.773	190.414	12.672	0.33097	2.88919	17	EX
K09SW9T	15.0	0.15	K0996	64.587	285.564	343.465	13.422	0.24909	2.99940	28	X
K09SX0D	15.3	0.15	K0996	47.936	63.428	213.820	3.891	0.30934	3.05662	42	EX
K09SX0F	17.6	0.15	K0996	19.600	133.171	184.012	5.512	0.26074	2.67512	9	EX
K09SX0T	15.5	0.15	K0996	36.702	283.328	26.416	12.449	0.05992	2.88507	30	X
K09SX2M	16.6	0.15	K0996	30.795	331.952	338.953	11.447	0.28319	2.56520	18	X
K09SX2R	17.7	0.15	K0996	349.972	89.174	287.759	2.210	0.19988	2.36035	12	X
K09SX3J	18.1	0.15	K0996	357.713	352.408	6.892	2.137	0.20316	2.35046	15	X
K09SX3L	17.8	0.15	K0996	330.365	205.305	198.305	4.730	0.22890	2.37072	14	X

New observations:

K00CA1O	C2009	10	05.77571	18	38	24.09	+35	46	05.3	15.9	C	ET015160
K00CA1O	C2009	10	05.77731	18	38	23.87	+35	46	12.9	16.5	C	ET015160
K00CA1O	C2009	10	05.78007	18	38	23.46	+35	46	25.9	16.2	C	ET015160
K06S77F	C2006	09	26.85184	00	02	29.35	+22	27	51.7	17.9	R	ET015152
K06S77F	C2006	09	26.85439	00	02	26.27	+22	28	09.6	17.4	R	ET015152
K06S77F	C2006	09	26.85576	00	02	24.72	+22	28	18.0	17.9	R	ET015152
K06S77F	C2006	09	26.85789	00	02	22.27	+22	28	31.3	17.6	R	ET015152
K06S77F	C2006	09	26.86016	00	02	19.46	+22	28	48.5	17.9	R	ET015152
K06S77F	C2006	09	26.86074	00	02	18.82	+22	28	52.3	17.8	R	ET015152
K06S77F	C2006	09	26.86163	00	02	17.75	+22	28	58.5	17.7	R	ET015152
K06S77F	C2006	09	26.86285	00	02	16.29	+22	29	06.7	17.8	R	ET015152
K06S77F	C2006	09	26.86344	00	02	15.61	+22	29	10.7	18.0	R	ET015152
K06S77F	C2006	09	26.86404	00	02	14.87	+22	29	15.4	17.9	R	ET015152
K06S77F	C2006	09	26.86468	00	02	14.13	+22	29	19.5	18.0	R	ET015152
K06S77F	C2006	09	26.86541	00	02	13.27	+22	29	23.9	17.9	R	ET015152
K06S77F	C2006	09	26.86667	00	02	11.76	+22	29	33.0	17.8	R	ET015152
K06S77F	C2006	09	26.86804	00	02	10.12	+22	29	42.6	17.7	R	ET015152
K09Q00O	C2009	10	05.08343022	06	03	03.80	+07	11	14.6	19.0	V	ET015H55
K09Q00O	C2009	10	05.08651922	06	04	04.22	+07	11	13.7	19.3	V	ET015H55
K09Q00O	C2009	10	05.09306722	06	05	05.07	+07	11	11.5	19.9	V	ET015H55
K09Q34D	C2009	10	05.42630	04	53	55.10	+07	52	11.8	18.6		ET015H36
K09Q34D	C2009	10	05.42939	04	53	55.17	+07	52	12.2	18.7		ET015H36
K09Q34E	C2009	10	05.30018	02	03	11.06	-06	38	52.1	20.0	V	ET015H55

K09Q34E	C2009	10	05.31538	02	03	09.08	-06	38	51.1	19.6	V	ET015H55
K09Q34E	C2009	10	05.31661	02	03	08.92	-06	38	51.0	19.8	V	ET015H55
K09Q34G	C2009	10	05.25099	01	47	36.27	+33	26	59.7	19.0	V	ET015H55
K09Q34G	C2009	10	05.25230	01	47	35.98	+33	27	01.3	19.1	V	ET015H55
K09Q34G	C2009	10	05.25492	01	47	35.39	+33	27	04.0	19.2	V	ET015H55
K09R00N	C2009	10	05.26522202	03	30.21	-12	15	39.0	17.6	V	ET015H55	
K09R00N	C2009	10	05.26747802	03	30.81	-12	15	38.2	17.7	V	ET015H55	
K09R00N	C2009	10	05.26973602	03	31.42	-12	15	37.5	17.8	V	ET015H55	
K09R00N	C2009	10	05.27193302	03	32.00	-12	15	36.8	17.5	V	ET015H55	
K09R01D	C2009	10	05.09762522	50	06.36	-04	43	35.7	19.1	V	ET015H55	
K09R01D	C2009	10	05.09961422	50	06.72	-04	43	32.5	19.4	V	ET015H55	
K09R01D	C2009	10	05.10599022	50	07.78	-04	43	21.1	19.1	V	ET015H55	
K09R04D	C2009	10	05.11090722	10	55.62	-16	22	50.3	17.8	V	ET015H55	
K09R04D	C2009	10	05.11283322	10	55.34	-16	22	27.6	18.0	V	ET015H55	
K09R04D	C2009	10	05.11416222	10	55.15	-16	22	11.9	18.1	V	ET015H55	
K09R04D	C2009	10	05.11611622	10	54.86	-16	21	48.6	18.2	V	ET015H55	
K09S00W	C2009	10	05.20437300	02	07.06	+00	54	45.1	19.1	V	ET015H55	
K09S00W	C2009	10	05.21460200	02	08.51	+00	54	25.5	19.1	V	ET015H55	
K09S00W	C2009	10	05.21813400	02	09.02	+00	54	19.1	19.1	V	ET015H55	
K09S02H]C2009	09	24.44517003	43	35.92	-23	21	39.2	18.0	C	ET015695	
K09S02H]C2009	09	24.45081203	43	37.59	-23	20	35.8	18.1	C	ET015695	
K09S02H]C2009	09	24.45636503	43	39.28	-23	19	33.6	17.9	C	ET015695	
K09S02H]C2009	09	24.46192903	43	40.94	-23	18	30.2	18.4	C	ET015695	
K09S18G	C2009	10	03.90567	18	08	15.87	+20	33	57.4			ET015587
K09S18G	FC2009	10	03.91247	18	08	16.72	+20	33	26.3			ET015587
K09S19T	C2009	10	03.85959	05	20	57.20	+36	09	58.3			ET015587
K09S19T	C2009	10	03.86131	05	20	56.95	+36	10	00.9	17.7	R	ET015587
K09S19T	C2009	10	03.87509	05	20	55.06	+36	10	23.3			ET015587
K09S19T	C2009	10	03.87641	05	20	54.90	+36	10	26.0			ET015587
K09S19T	C2009	10	05.06920	05	18	07.00	+36	40	15.1	16.7	R	ET015J47
K09S19T	C2009	10	05.07362	05	18	06.33	+36	40	22.0	16.8	R	ET015J47
K09S19T	C2009	10	05.08692	05	18	04.25	+36	40	42.6	16.7	R	ET015J47
K09SA0B	C2009	10	05.32686	02	33	12.18	+10	31	33.5	19.8	V	ET015H55
K09SA0B	C2009	10	05.32776	02	33	12.57	+10	31	29.7	19.6	V	ET015H55
K09SA0B	C2009	10	05.32866	02	33	12.96	+10	31	25.8	19.4	V	ET015H55
K09SA0B	C2009	10	05.32955	02	33	13.35	+10	31	22.0	19.3	V	ET015H55
K09SA3M	C2009	09	26.90771	20	30	05.55	+12	43	08.5	16.2	C	ET015A71
K09SA3M	C2009	09	26.91053	20	30	05.98	+12	43	11.3	16.6	C	ET015A71
K09SA3M	C2009	09	26.91338	20	30	06.45	+12	43	14.2	16.9	C	ET015A71
K09SA3M	C2009	09	26.91552	20	30	06.80	+12	43	16.1	17.2	C	ET015A71
K09SA3M	C2009	10	05.02470920	52	10.11	+14	32	47.4	18.3	V	ET015H55	
K09SA3M	C2009	10	05.02718120	52	10.51	+14	32	49.3	18.2	V	ET015H55	
K09SA3M	C2009	10	05.03489020	52	11.71	+14	32	54.6	18.2	V	ET015H55	
K09SA3T	C2009	10	03.81264	22	00	13.74	+20	15	22.6			ET015587
K09SA3T	C2009	10	03.82590	22	00	12.14	+20	15	06.6			ET015587
K09SA3T	C2009	10	03.83395	22	00	11.05	+20	14	55.5			ET015587
K09SA3T	C2009	10	05.07354821	57	43.01	+19	47	35.0	20.0	V	ET015H55	
K09SA3T	C2009	10	05.07598921	57	42.69	+19	47	31.6	19.8	V	ET015H55	
K09SA3T	C2009	10	05.07851421	57	42.37	+19	47	28.0	19.9	V	ET015H55	
K09SA3T	C2009	10	05.22802	21	57	24.20	+19	44	08.1	19.0	R	ET015926
K09SA3T	C2009	10	05.22969	21	57	24.02	+19	44	05.4	19.1	R	ET015926
K09SA3T	C2009	10	05.23134	21	57	23.79	+19	44	03.1	19.1	R	ET015926
K09SA4L	C2009	10	05.26935	00	05	30.48	+61	12	27.3	18.0	R	ET015926
K09SA4L	C2009	10	05.27265	00	05	32.74	+61	13	07.3	17.9	R	ET015926
K09SA4S	C2009	10	05.27658	02	04	03.10	+01	19	13.8	20.6	V	ET015H55

	K09SA4S	C2009	10	05.27746	02	04	03.21	+01	19	11.1	20.5	V	ET015H55
	K09SA4S	C2009	10	05.28278	02	04	03.95	+01	18	55.6			ET015H55
00433		C2009	09	16.27367	21	54	47.65	+05	38	41.3	11.4		ET015H10
00433		C2009	09	21.24959	21	47	36.51	+05	19	26.8	11.6		ET015H10
00433		C2009	09	27.34492	21	40	27.60	+04	53	19.5	11.8		ET015H10
54401		C2009	10	05.80004	23	20	20.74	+43	36	08.2	17.5	C	ET015160
54401		C2009	10	05.80271	23	20	20.81	+43	36	02.9	17.9	C	ET015160
54401		C2009	10	05.80447	23	20	20.83	+43	35	59.4	17.7	C	ET015160
F9402		C2009	09	16.73170	22	37	07.76	-14	39	26.6	13.8	V	ET015B17
F9402		C2009	09	16.73385	22	37	07.58	-14	39	22.6	13.8	V	ET015B17
F9402		C2009	09	16.73457	22	37	07.51	-14	39	21.4	13.9	V	ET015B17
F9402		C2009	09	16.74471	22	37	06.59	-14	39	02.7	13.8	V	ET015B17
F9402		C2009	09	16.74544	22	37	06.52	-14	39	01.3	13.8	V	ET015B17
F9402		C2009	09	16.76557	22	37	04.67	-14	38	23.9	13.6	V	ET015B17
F9402		C2009	09	16.76628	22	37	04.60	-14	38	22.6	13.6	V	ET015B17
F9402		C2009	09	16.76700	22	37	04.53	-14	38	21.3	13.6	V	ET015B17
F9402		C2009	09	16.78207	22	37	03.14	-14	37	53.2	13.5	V	ET015B17
F9402		C2009	09	16.78279	22	37	03.07	-14	37	51.8	13.6	V	ET015B17
F9402		C2009	09	16.81286	22	37	00.25	-14	36	55.6	13.4	V	ET015B17
F9402		C2009	09	16.81358	22	37	00.18	-14	36	54.2	13.4	V	ET015B17
F9402		C2009	09	16.84830	22	36	56.91	-14	35	48.9	13.6	V	ET015B17
F9402		C2009	09	16.84902	22	36	56.84	-14	35	47.5	13.6	V	ET015B17
F9402		C2009	09	16.86147	22	36	55.65	-14	35	23.9	13.8	V	ET015B17
F9402		C2009	09	16.86219	22	36	55.58	-14	35	22.5	13.8	V	ET015B17
F9402		C2009	09	16.86291	22	36	55.51	-14	35	21.1	13.8	V	ET015B17
F9402		C2009	09	16.87608	22	36	54.25	-14	34	56.1	13.9	V	ET015B17
F9402		C2009	09	16.88853	22	36	53.06	-14	34	32.3	14.0	V	ET015B17
F9402		C2009	09	16.90317	22	36	51.66	-14	34	04.2	14.0	V	ET015B17
F9402		C2009	09	16.90389	22	36	51.59	-14	34	02.9	14.0	V	ET015B17
F9402		C2009	09	24.00043	22	26	27.89	-09	41	08.9	13.1	V	ET015B17
F9402		C2009	09	24.00116	22	26	27.82	-09	41	06.6	13.1	V	ET015B17
F9402		C2009	09	24.00189	22	26	27.74	-09	41	04.4	13.1	V	ET015B17
F9402		C2009	09	24.00266	22	26	27.66	-09	41	01.7	13.1	V	ET015B17
F9402		C2009	09	24.00343	22	26	27.58	-09	40	59.4	13.1	V	ET015B17
F9402		C2009	09	24.01316	22	26	26.59	-09	40	28.4	13.2	V	ET015B17
F9402		C2009	09	24.01389	22	26	26.51	-09	40	26.2	13.1	V	ET015B17
F9402		C2009	09	24.01462	22	26	26.44	-09	40	23.9	13.1	V	ET015B17
F9402		C2009	09	24.01535	22	26	26.37	-09	40	21.5	13.2	V	ET015B17
F9402		C2009	09	24.01608	22	26	26.29	-09	40	18.9	13.1	V	ET015B17
F9402		C2009	09	24.01681	22	26	26.23	-09	40	16.7	13.2	V	ET015B17
F9402		C2009	09	24.01753	22	26	26.15	-09	40	14.4	13.1	V	ET015B17
F9402		C2009	09	28.15778	22	19	46.66	-05	28	31.1	12.8	R	ET015H06
F9402		C2009	09	28.15976	22	19	46.43	-05	28	22.9	12.8	R	ET015H06
F9402		C2009	09	28.16183	22	19	46.17	-05	28	14.4	12.8	R	ET015H06
F9402		C2009	09	28.16385	22	19	45.89	-05	28	05.0	12.9	R	ET015H06
F9402		C2009	09	28.16591	22	19	45.65	-05	27	57.1	12.7	R	ET015H06
F9402		C2009	10	05.27123	22	06	50.26	+05	11	31.4	12.9	C	ET015H10
F9402		C2009	10	05.27253	22	06	50.08	+05	11	40.0	12.8	C	ET015H10
F9402		C2009	10	05.27389	22	06	49.91	+05	11	49.2	12.9	C	ET015H10
F9402		C2009	10	05.55563	22	06	19.23	+05	45	32.5	13.0	C	ET015D25
F9402		C2009	10	05.55758	22	06	18.94	+05	45	45.8	13.0	C	ET015D25
F9402		C2009	10	05.55897	22	06	18.74	+05	45	56.0	13.1	C	ET015D25
G2181		C2009	10	05.78414	18	40	20.29	+22	46	23.8	16.8	C	ET015160
G2181		C2009	10	05.78629	18	40	21.07	+22	46	16.9	17.2	C	ET015160
G2181		C2009	10	05.78899	18	40	22.00	+22	46	08.4	17.1	C	ET015160

A. U. Tomatic

(C) Copyright 2009 MPC

M.P.E.C. 2009-T15



[Read MPEC 2009-T14](#)



[Read MPEC 2009-T16](#)